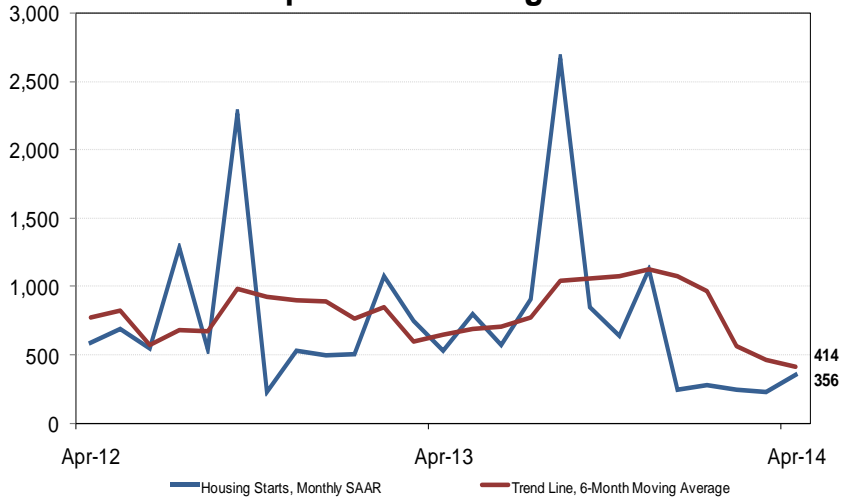


Guelph CMA Housing Starts



Preliminary Housing Start Data April 2014		
Guelph, CMA ¹	March 2014	April 2014
<i>Trend</i> ²	461	414
<i>SAAR</i> ³	230	356
Actual	April 2013	April 2014
April - Single-Detached	10	14
April - Multiples	36	17
April - Total	46	31
January to April - Single-Detached	51	44
January to April - Multiples	180	42
January to April - Total	231	86

Source: CMHC

¹ Census Metropolitan Area

² The trend is a six-month moving average of the monthly seasonally adjusted annual rates (SAAR).

³ Seasonally Adjusted at Annual Rates

Detailed data available upon request.

Guelph Preliminary Actual Housing Start Data by Type April 2014										
Guelph, CMA ¹	Single		Semi		Row		Apt		Total	
	2013	2014	2013	2014	2013	2014	2013	2014	2013	2014
List of Sub-markets										
Guelph City	8	9	2	4	34	5	0	8	44	26
Guelph-Eramosa Township	0	4	0	0	0	0	0	0	0	4
Puslinch Township	2	1	0	0	0	0	0	0	2	1
Total Guelph Starts	10	14	2	4	34	5	0	8	46	31
Guelph Preliminary Actual Housing Start Data by Type Year to Date / 2013-2014										
Guelph, CMA ¹	Single		Semi		Row		Apt		Total	
	2013	2014	2013	2014	2013	2014	2013	2014	2013	2014
List of Sub-markets										
Guelph City	47	29	6	10	90	16	84	16	227	71
Guelph-Eramosa Township	0	10	0	0	0	0	0	0	0	10
Puslinch Township	4	5	0	0	0	0	0	0	4	5
Total Guelph Starts	51	44	6	10	90	16	84	16	231	86

¹Census Metropolitan Area