

Figure 1. Regional geology map of western Upper Peninsula and Highland project locations (red bullets).

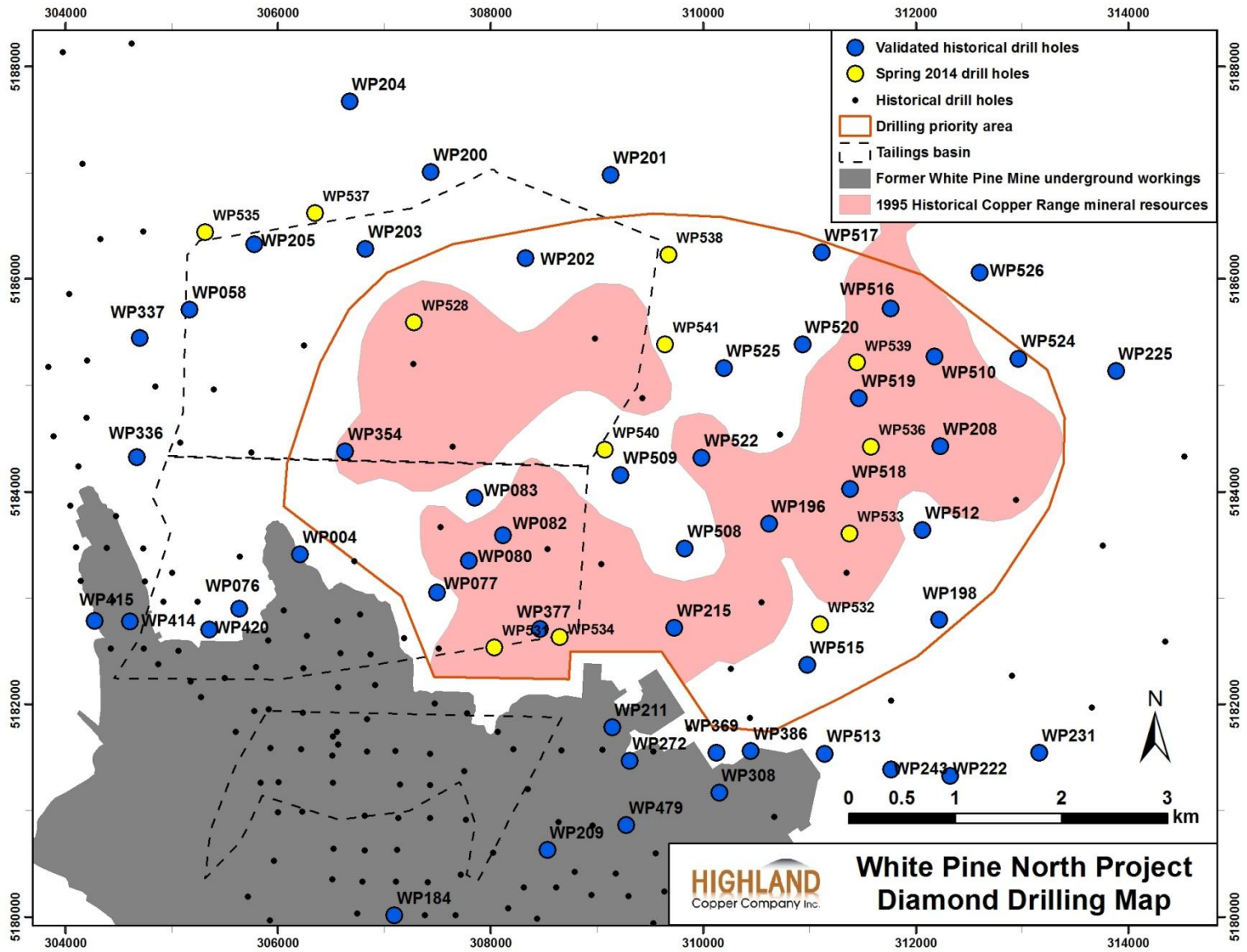


Figure 2. Location map of holes completed in the 2014 drilling program and historical diamond drill holes used in Highland’s validation sampling program.

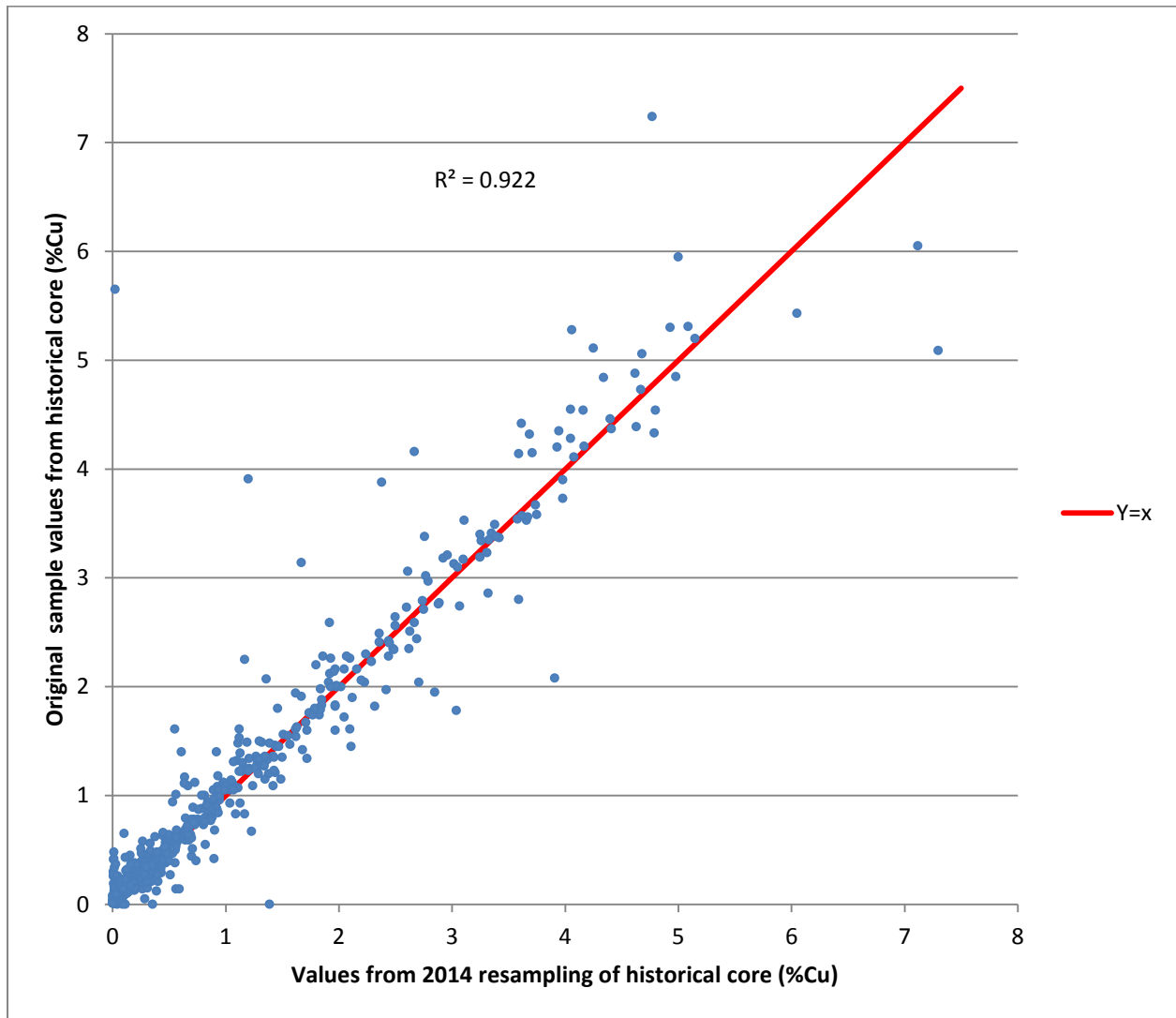


Figure 3. X-Y plot comparing the analytical results from historical and validation sampling of historical drill core from the White Pine North (883 samples).