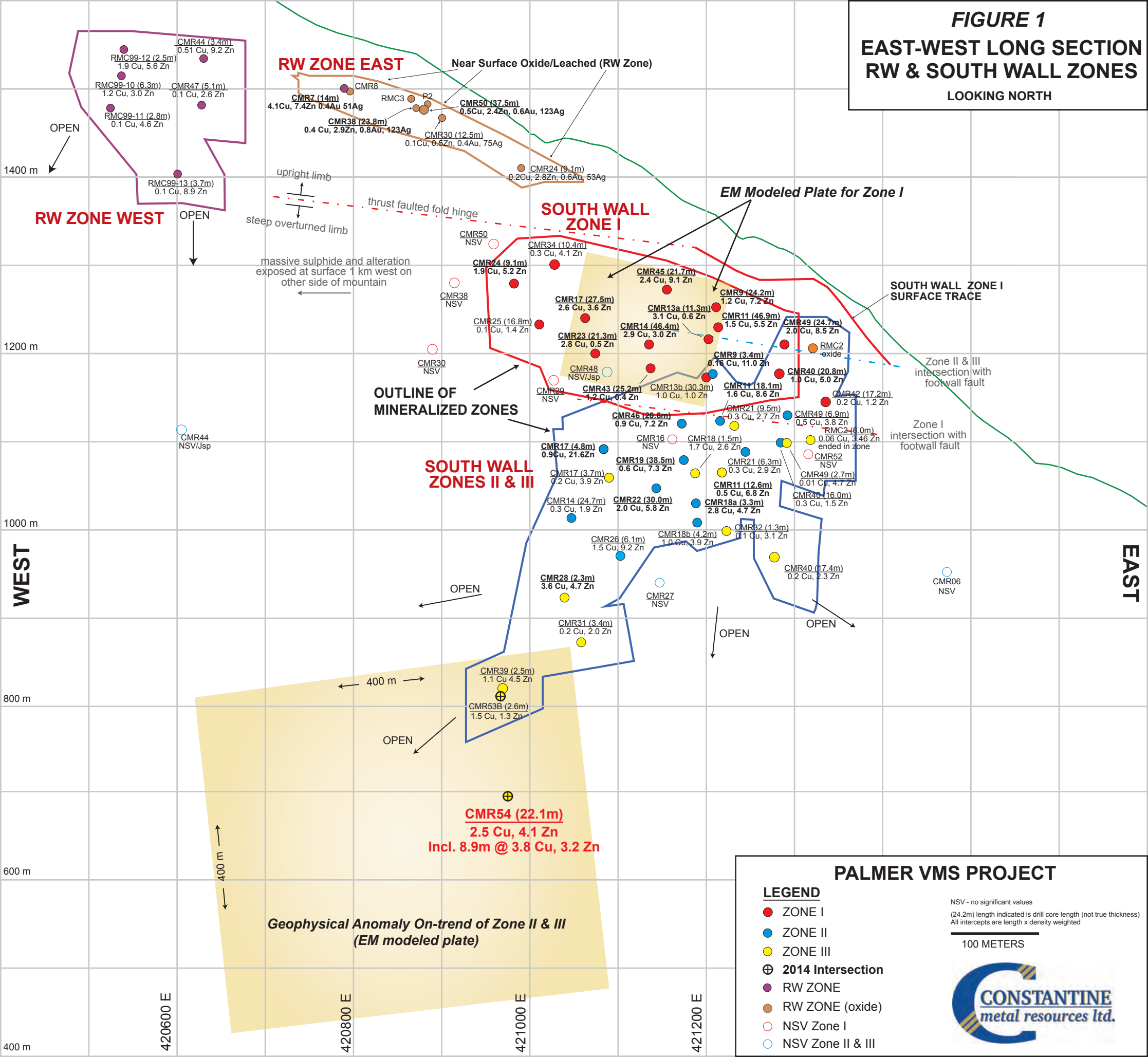


FIGURE 1
EAST-WEST LONG SECTION
RW & SOUTH WALL ZONES
 LOOKING NORTH



PALMER VMS PROJECT

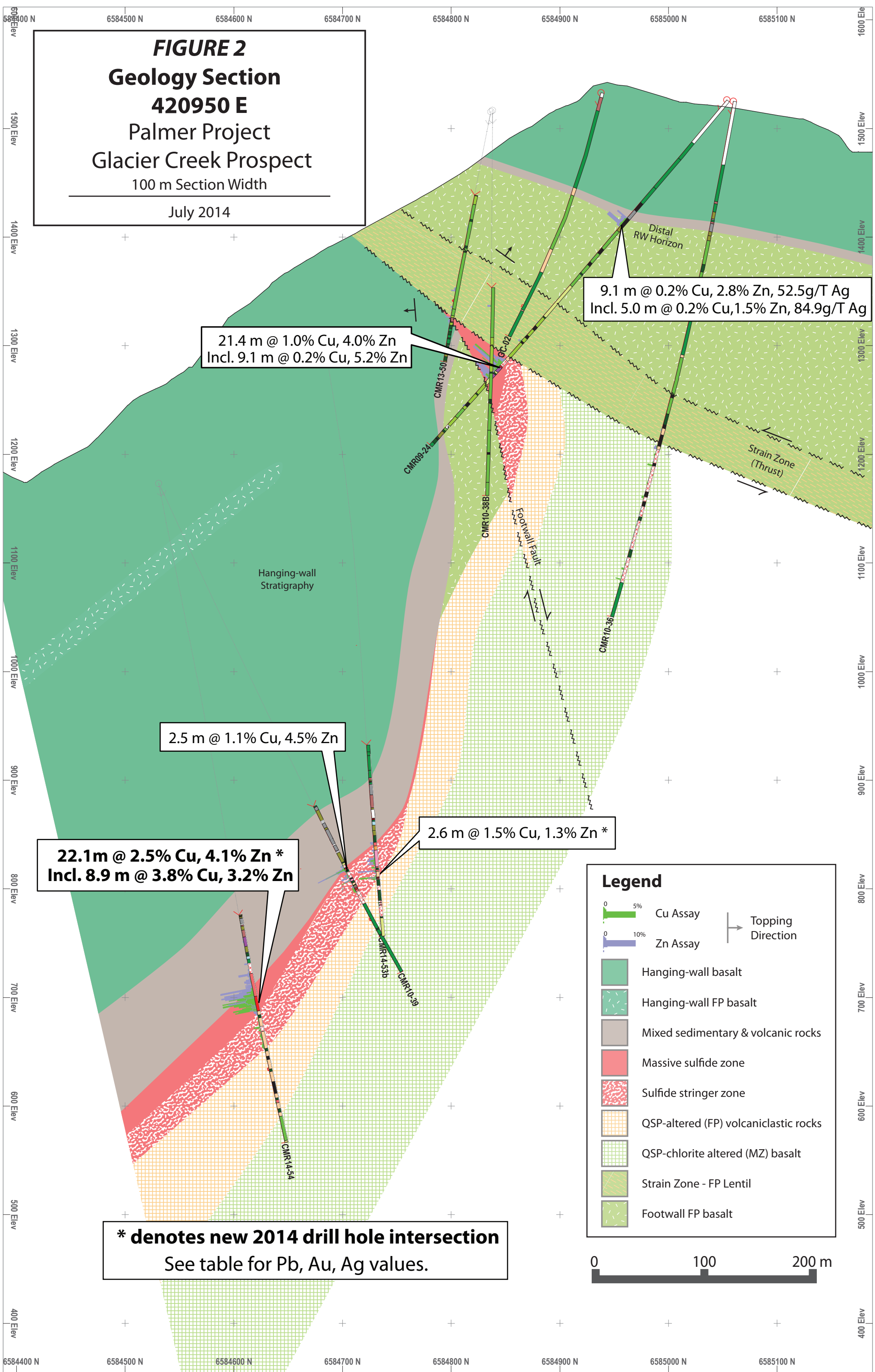
LEGEND

- ZONE I
- ZONE II
- ZONE III
- ⊕ 2014 Intersection
- RW ZONE
- RW ZONE (oxide)
- NSV Zone I
- NSV Zone II & III

NSV - no significant values
 (24.2m) length indicated is drill core length (not true thickness)
 All intercepts are length x density weighted

100 METERS

FIGURE 2
Geology Section
420950 E
Palmer Project
Glacier Creek Prospect
100 m Section Width
July 2014



9.1 m @ 0.2% Cu, 2.8% Zn, 52.5g/T Ag
Incl. 5.0 m @ 0.2% Cu, 1.5% Zn, 84.9g/T Ag

21.4 m @ 1.0% Cu, 4.0% Zn
Incl. 9.1 m @ 0.2% Cu, 5.2% Zn

2.5 m @ 1.1% Cu, 4.5% Zn

2.6 m @ 1.5% Cu, 1.3% Zn *

22.1m @ 2.5% Cu, 4.1% Zn *
Incl. 8.9 m @ 3.8% Cu, 3.2% Zn

Legend

- 0-5% Cu Assay
- 0-10% Zn Assay
- Topping Direction
- Hanging-wall basalt
- Hanging-wall FP basalt
- Mixed sedimentary & volcanic rocks
- Massive sulfide zone
- Sulfide stringer zone
- QSP-altered (FP) volcanoclastic rocks
- QSP-chlorite altered (MZ) basalt
- Strain Zone - FP Lentil
- Footwall FP basalt

*** denotes new 2014 drill hole intersection**
See table for Pb, Au, Ag values.

