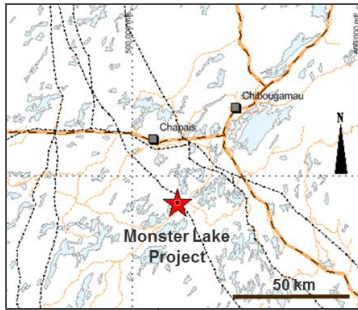


Table 1

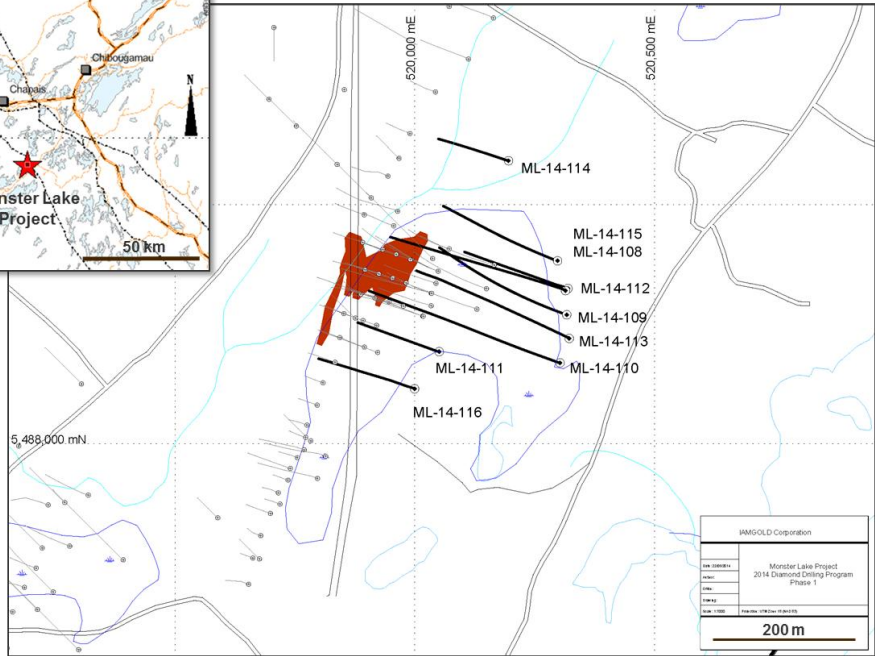
Monster Lake Project Drilling Final Results - 2014 Winter Drilling program												
Hole No.	UTMNAD83Zone18 <sup>(1)</sup>			AZ	DIP	EOH	from	To	Interval	True Width <sup>(2)</sup>	Au	NOTE
	Easting	Northing	Elevation									
ML-14-108	520296	5488383	370	290	-55	480	56.1	58	1.9	1.65	1.81	Upper 325-Megane Zone
							445.25	446.5	1.25	1.08	6.44	
							457	467.47	10.47	9.07	11.55	325-Megane Zone
<i>Including<sup>(3)</sup></i>							458	460	2	1.73	48.9	
<i>Including<sup>(3)</sup></i>							466	467.47	1.47	1.27	11.1	
ML-14-109	520316	5488270	370	290	-55	582	66	71.16	5.16	4.47	1.3	Upper 325-Megane Zone
<i>Including<sup>(3)</sup></i>							69	71.16	2.16	1.87	1.64	Upper 325-Megane Zone
							559.77	560.41	0.64	0.55	0.95	325-Megane Zone
ML-14-110	520302	5488169	370	290	-50	667	210.1	211.26	1.16	1.00	1.04	
							508	509.45	1.45	1.26	0.71	325-Megane Zone
							636.86	640.63	3.77	3.26	13.65	Lower 325-Megane Zone
<i>Including<sup>(3)</sup></i>							638.8	639.88	1.08	0.94	46.17	
ML-14-111	520318	5488324	370	290	-60	454	59.59	60.13	0.54	0.47	3.48	Upper 325-Megane Zone
							300.92	301.92	1	0.87	1.4	325-Megane Zone
							420.18	421.16	0.98	0.85	1.85	Lower 325-Megane Zone
ML-14-112	520315	5488321	370	291	-53	652	480.9	489.27	8.37	7.25	1.32	325-Megane Zone
<i>Including<sup>(3)</sup></i>							485.18	487.27	2.09	1.81	2.97	
							596.51	597.65	1.14	1.00	1.48	Lower 325-Megane Zone
ML-14-113	520322	5488221	370	295	-51	550	514	518.47	4.47	3.87	1.50	325-Megane Zone
ML-14-114	520195	5488592	370	290	-60	313	273.8	274.99	1.19	1.03	1.89	325-Megane Zone
ML-14-115	520296	5488383	370	290	-50	304	53.62	54.86	1.24	1.07	1.58	Upper 325-Megane Zone
							422.5	424.62	2.12	1.84	2.30	325-Megane Zone
							426.1	431.96	5.86	5.07	2.62	
<i>Including<sup>(3)</sup></i>							426.94	429.15	2.21	1.91	6.21	
ML-14-116	520000	5488115	370	291	-61	451	83.92	84.46	0.54	0.47	5.84	Upper 325-Megane Zone
							278.07	281.22	3.15	2.73	2.42	325-Megane Zone

**Notes:**

1. Drill hole intercepts are calculated with a lower cut of 0.50 g/t Au and represents the best results associated to the intersected structure.
2. True widths of intersections are approximately 85-90% of the core interval.
3. Assays are reported uncut but high grade sub-intervals are highlighted.



### DRILL HOLE PLAN MAP – MONSTER LAKE PROJECT



### MONSTER LAKE 2014 WINTER DRILLING PROGRAM - FINAL RESULTS

