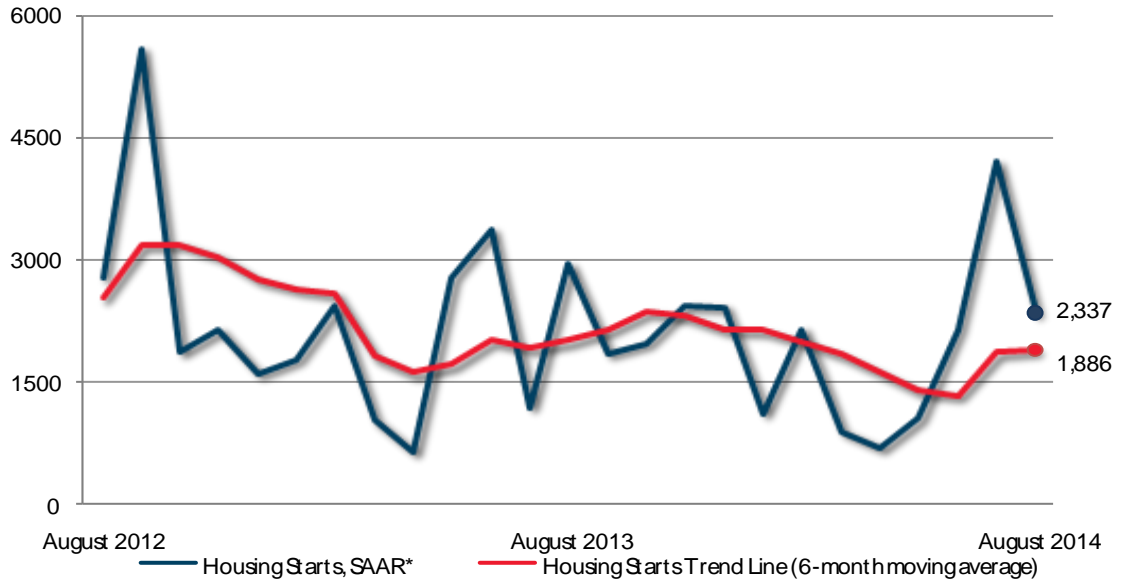


## New Brunswick Housing Starts - Urban Areas



Preliminary Housing Start Data August 2014		
New Brunswick, Centres 10,000+	July 2014	August 2014
<i>Trend</i> <sup>1</sup> , urban centres <sup>2</sup>	1,855	1,886
SAAR, urban centres <sup>2</sup>	4,203	2,337
	August 2013	August 2014
Actual, urban centres <sup>2</sup>		
August - Single-Detached	109	106
August – Multiples	170	128
August - Total	279	234
January to August - Single-Detached	515	473
January to August - Multiples	815	685
January to August - Total	1,330	1,158

Source: CMHC

<sup>1</sup>The trend is a six-month moving average of the monthly seasonally adjusted annual rates (SAAR).

<sup>2</sup>Urban centres with a population of 10,000 and over.

Detailed data available upon request

**New Brunswick Preliminary Actual Housing Start Data  
August / 2013-2014**

Urban Centres	Single-Detached		Multiples		Total	
	2013	2014	2013	2014	2013	2014
<b>Urban Centres 100,000<sup>+</sup></b>						
Moncton CMA	38	29	37	36	75	65
Saint John CMA	10	16	54	77	64	93
<b>Urban Centres 50,000-99,999</b>						
Fredericton CA	42	42	72	9	114	51
<b>Other Urban Centres (Estimated)<sup>1</sup></b>	19	19	7	6	26	25
<b>Total Urban Starts<sup>1</sup></b>	109	106	170	128	279	234

**New Brunswick Preliminary Actual Housing Start Data  
January to August / 2013-2014**

Urban Centres	Single-Detached		Multiples		Total	
	2013	2014	2013	2014	2013	2014
<b>Urban Centres 100,000<sup>+</sup></b>						
Moncton CMA	159	144	467	484	626	628
Saint John CMA	77	80	89	106	166	186
<b>Urban Centres 50,000-99,999</b>						
Fredericton CA	188	169	209	70	397	239
<b>Other Urban Centres (Estimated)<sup>1</sup></b>	91	80	50	25	141	105
<b>Total Urban Starts<sup>1</sup></b>	515	473	815	685	1,330	1,158

<sup>1</sup>Urban starts include an estimate for the areas 10,000-49,999 for the first two months of the quarter and are subject to revision(s) after quarterly enumeration in the third and final month of the quarter.