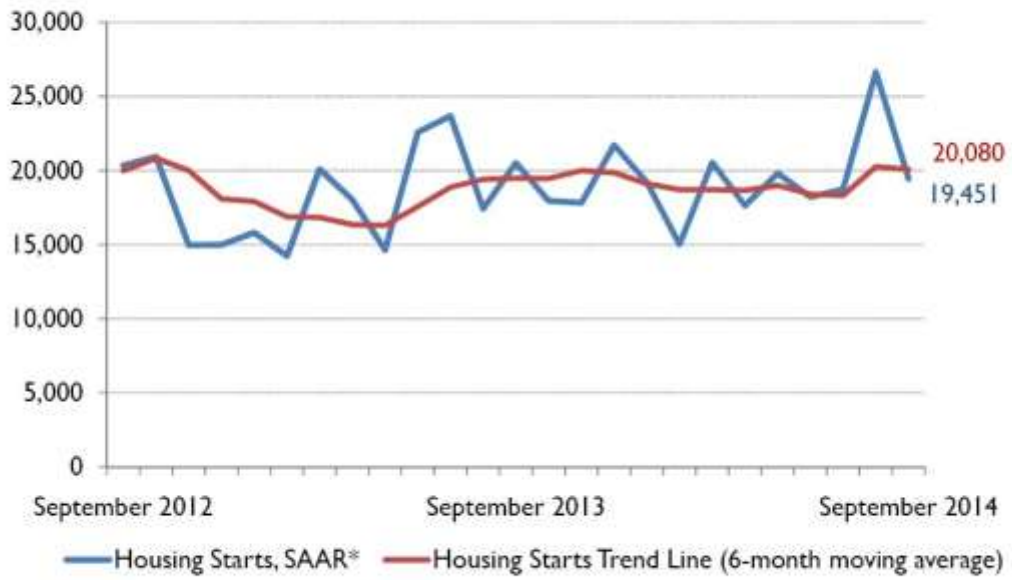


Vancouver CMA Housing Starts



*SAAR: Seasonally Adjusted Annual Rate
Source: CMHC

**Preliminary Housing Start Data
September 2014**

Vancouver CMA¹	August 2014	September 2014
<i>Trend²</i>	20,262	20,080
<i>SAAR</i>	26,641	19,451
	September 2013	September 2014
Actual		
September - Single-detached	337	392
September - Multiples	1,393	1,245
September - Total	1,730	1,637
January to September - Single-detached	2,964	3,228
January to September - Multiples	10,977	11,413
January to September - Total	13,941	14,641

Source: CMHC

¹Census Metropolitan Area

²The trend is a six-month moving average of the monthly seasonally adjusted annual rates (SAAR).

Detailed data available upon request

Vancouver CMA Preliminary Actual Housing Starts Data
September / 2013 - 2014

	Singles		Multiples		Total	
	2013	2014	2013	2014	2013	2014
Anmore VL	0	10	0	0	0	10
Belcarra VL	0	1	0	0	0	1
Bowen Island IM	0	0	0	0	0	0
Burnaby CY	25	35	119	132	144	167
Coquitlam CY	16	34	40	23	56	57
Delta DM	10	14	10	80	20	94
Greater Vancouver A RDA	0	0	0	0	0	0
Indian Reserves	0	0	0	0	0	0
Langley CY	0	1	0	67	0	68
Langley DM	39	25	28	147	67	172
Lions Bay VL	1	1	0	0	1	1
Maple Ridge DM	9	14	4	17	13	31
New Westminister CY	8	6	0	63	8	69
North Vancouver CY	6	0	4	8	10	8
North Vancouver DM	9	11	7	0	16	11
Pitt Meadows CY	1	3	0	4	1	7
Port Coquitlam CY	2	3	36	0	38	3
Port Moody CY	0	1	0	0	0	1
Richmond CY	29	38	220	23	249	61
Surrey CY	64	68	125	141	189	209
Vancouver CY	104	102	690	530	794	632
West Vancouver DM	9	17	8	0	17	17
White Rock CY	5	8	102	10	107	18
Vancouver CMA Total	337	392	1,393	1,245	1,730	1,637
Abbotsford-Mission CMA Total	26	30	104	20	130	50
Chilliwack Total	18	32	4	7	22	39

Source: CMHC

Vancouver CMA Preliminary Actual Housing Starts Data
Year to Date / 2013 - 2014

	Singles		Multiples		Total	
	2013	2014	2013	2014	2013	2014
Anmore VL	10	19	0	0	10	19
Belcarra VL	0	3	0	0	0	3
Bowen Island IM	6	13	1	30	7	43
Burnaby CY	180	275	1,493	1,171	1,673	1,446
Coquitlam CY	237	277	797	1,201	1,034	1,478
Delta DM	84	98	108	217	192	315
Greater Vancouver A RDA	1	10	520	199	521	209
Indian Reserves	0	34	0	0	0	34
Langley CY	4	11	5	100	9	111
Langley DM	186	157	531	728	717	885
Lions Bay VL	1	2	0	0	1	2
Maple Ridge DM	149	148	179	255	328	403
New Westminster CY	47	44	88	488	135	532
North Vancouver CY	28	30	470	397	498	427
North Vancouver DM	81	81	44	301	125	382
Pitt Meadows CY	3	9	24	72	27	81
Port Coquitlam CY	36	18	223	209	259	227
Port Moody CY	5	3	0	2	5	5
Richmond CY	197	293	818	1,905	1,015	2,198
Surrey CY	594	746	1,572	1,551	2,166	2,297
Vancouver CY	976	811	3,854	2,519	4,830	3,330
West Vancouver DM	98	83	109	12	207	95
White Rock CY	41	63	141	56	182	119
Vancouver CMA Total	2,964	3,228	10,977	11,413	13,941	14,641
Abbotsford-Mission CMA Total	147	184	431	225	578	409
Chilliwack Total	176	202	173	229	349	431

Source: CMHC