

Figure 1. Location of the Caribou Dome Copper Project in Alaska, USA.

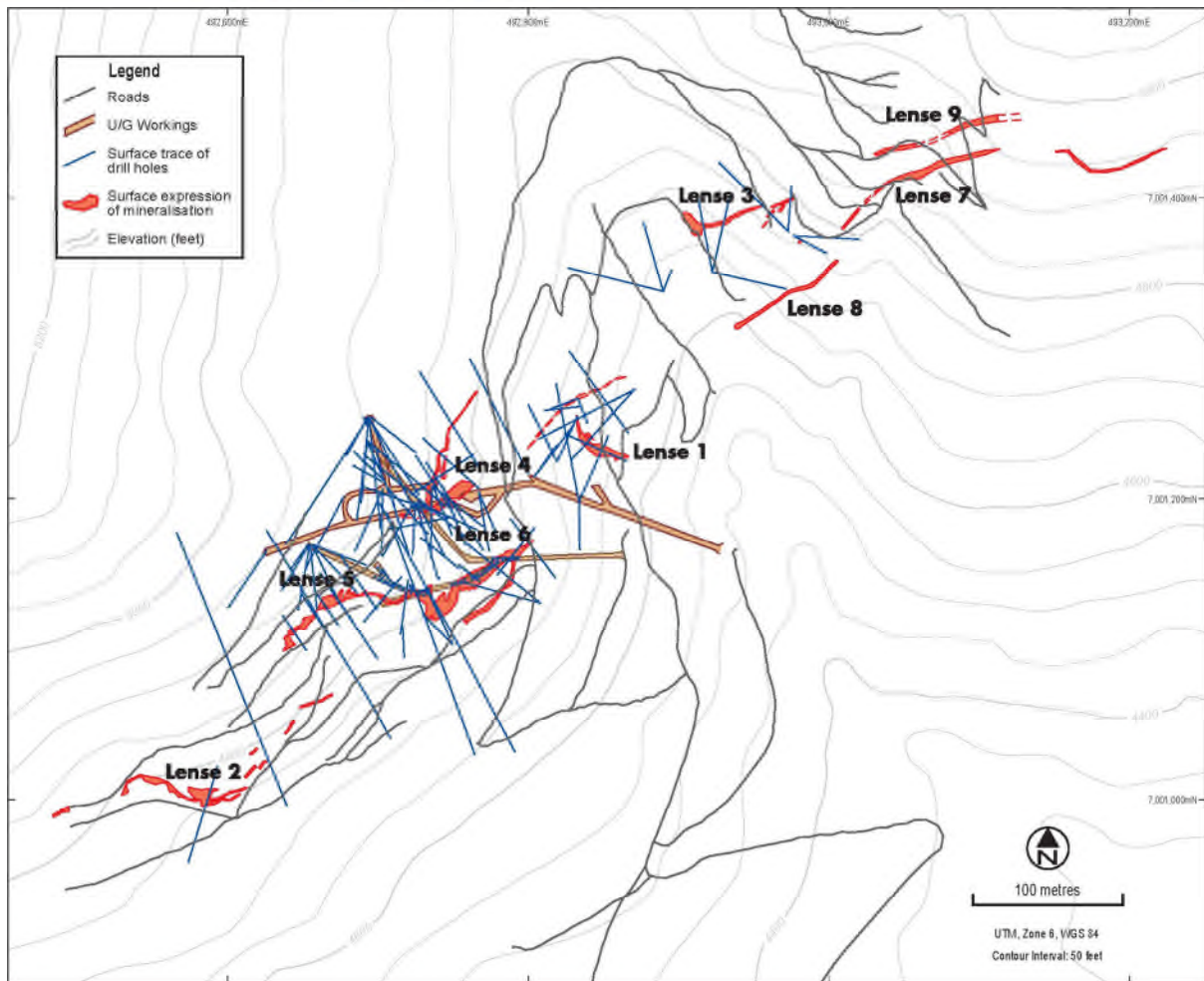


Figure 2. Location of the nine lenses of mineralisation delineated at surface at the Caribou Dome Copper Project to date, together with surface traces of diamond drill holes and underground development.

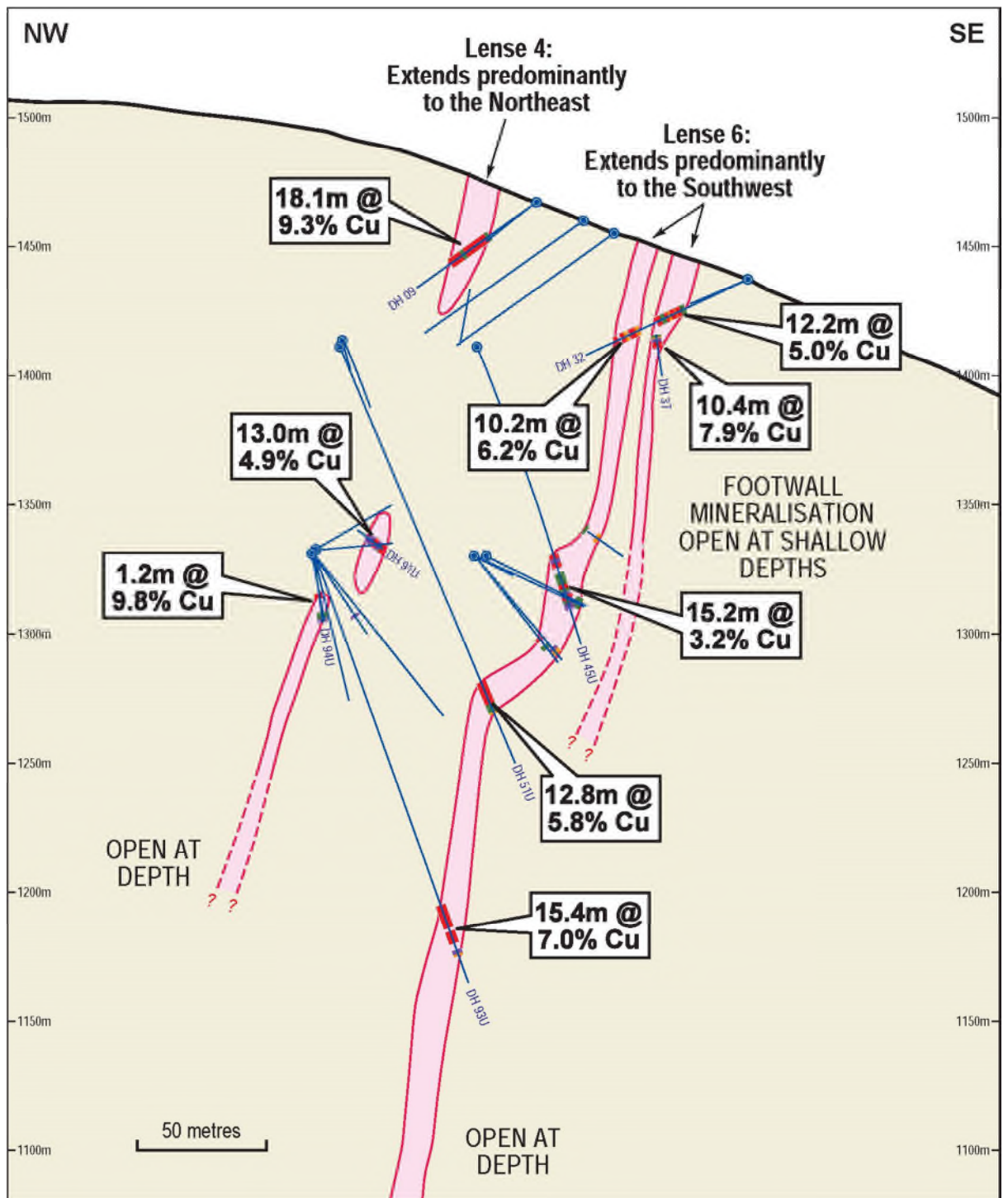


Figure 3. Cross section through mineralised lenses 4 and 6 at the Caribou Dome Copper Project, including select drilling results.

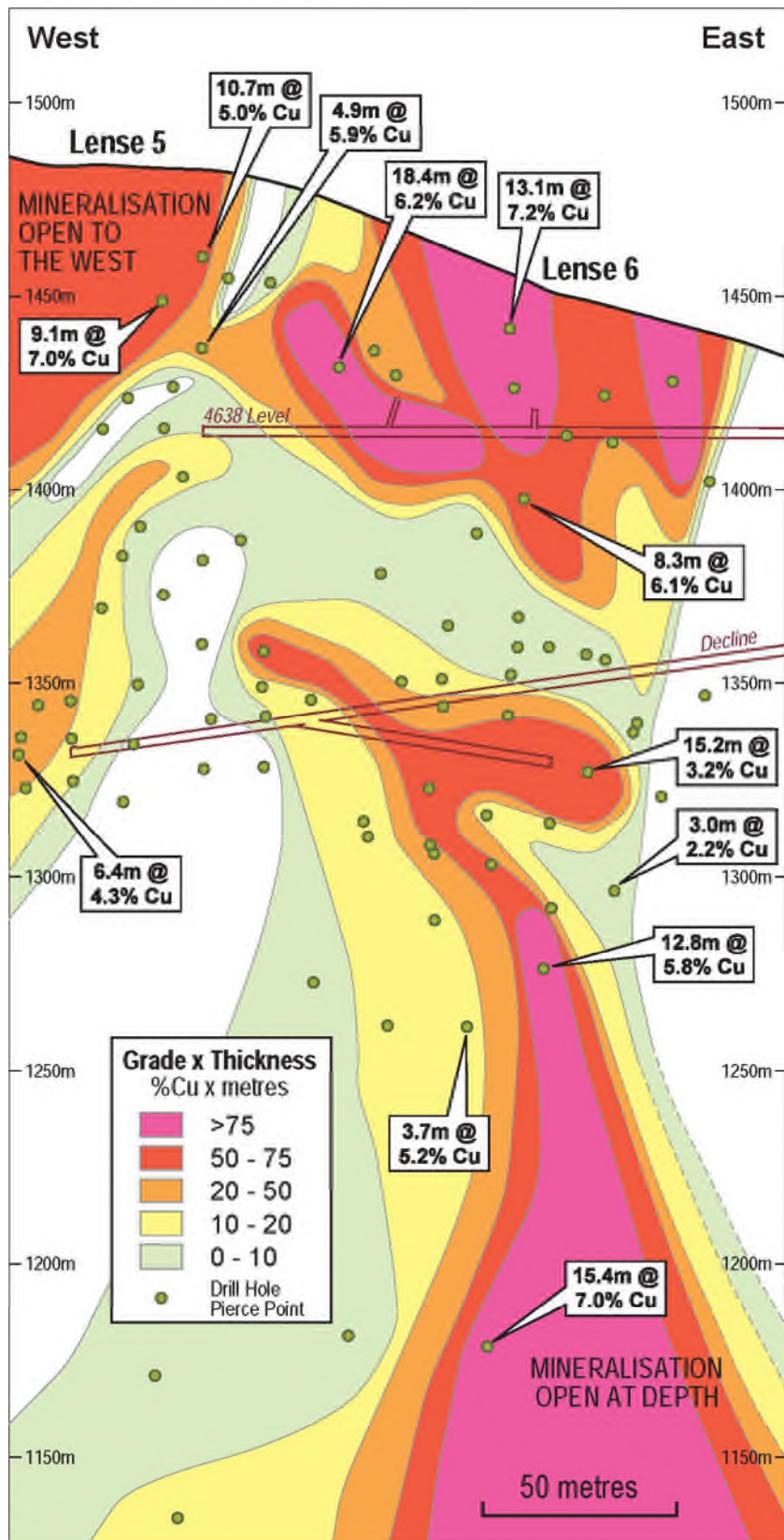


Figure 4. Longitudinal section through mineralised lenses 5 and 6 at the Caribou Dome Copper Project, including select drilling results.

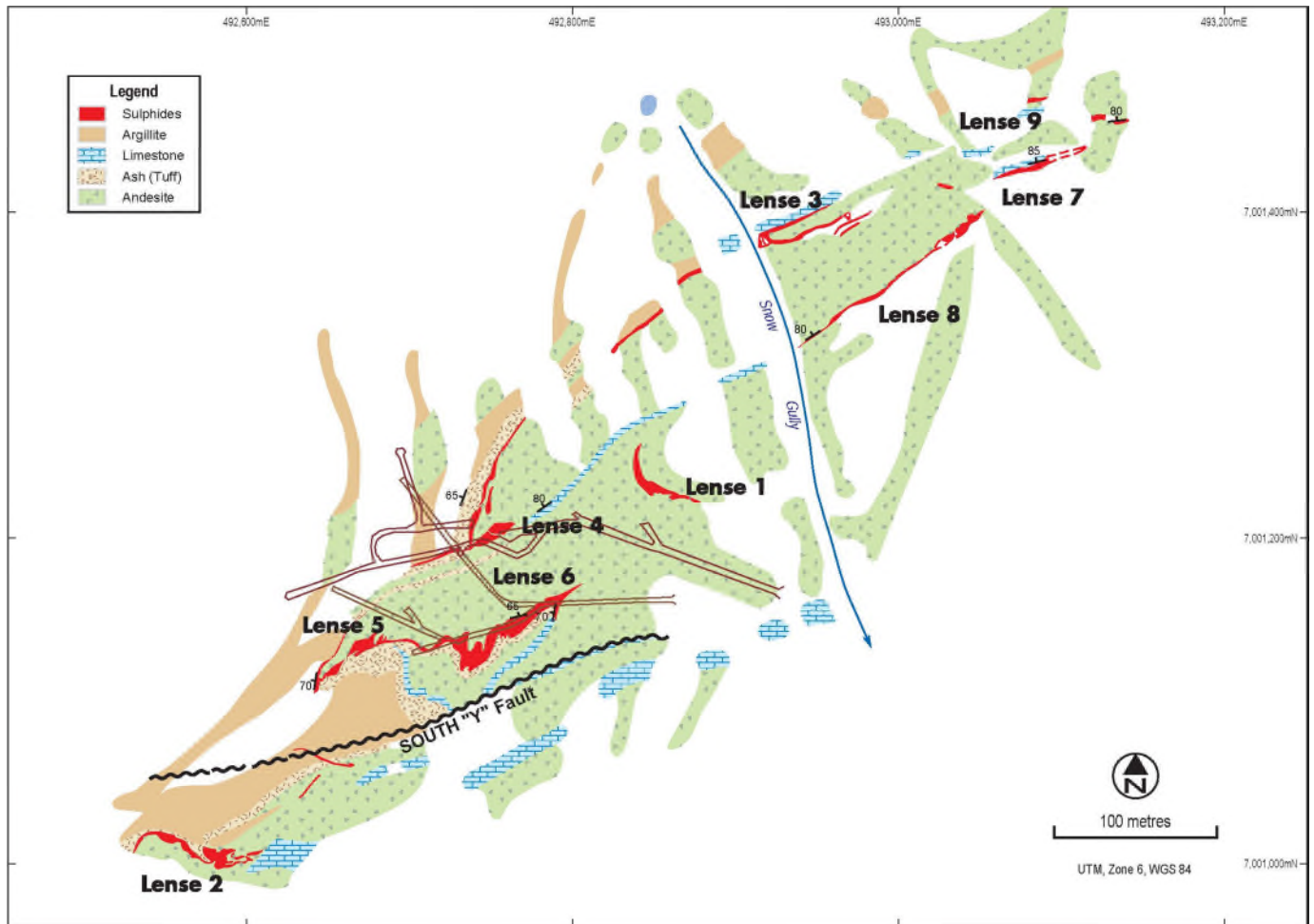


Figure 5. Geology around the nine known lenses of mineralisation at the Caribou Dome Copper Project, together with surface traces of underground development.

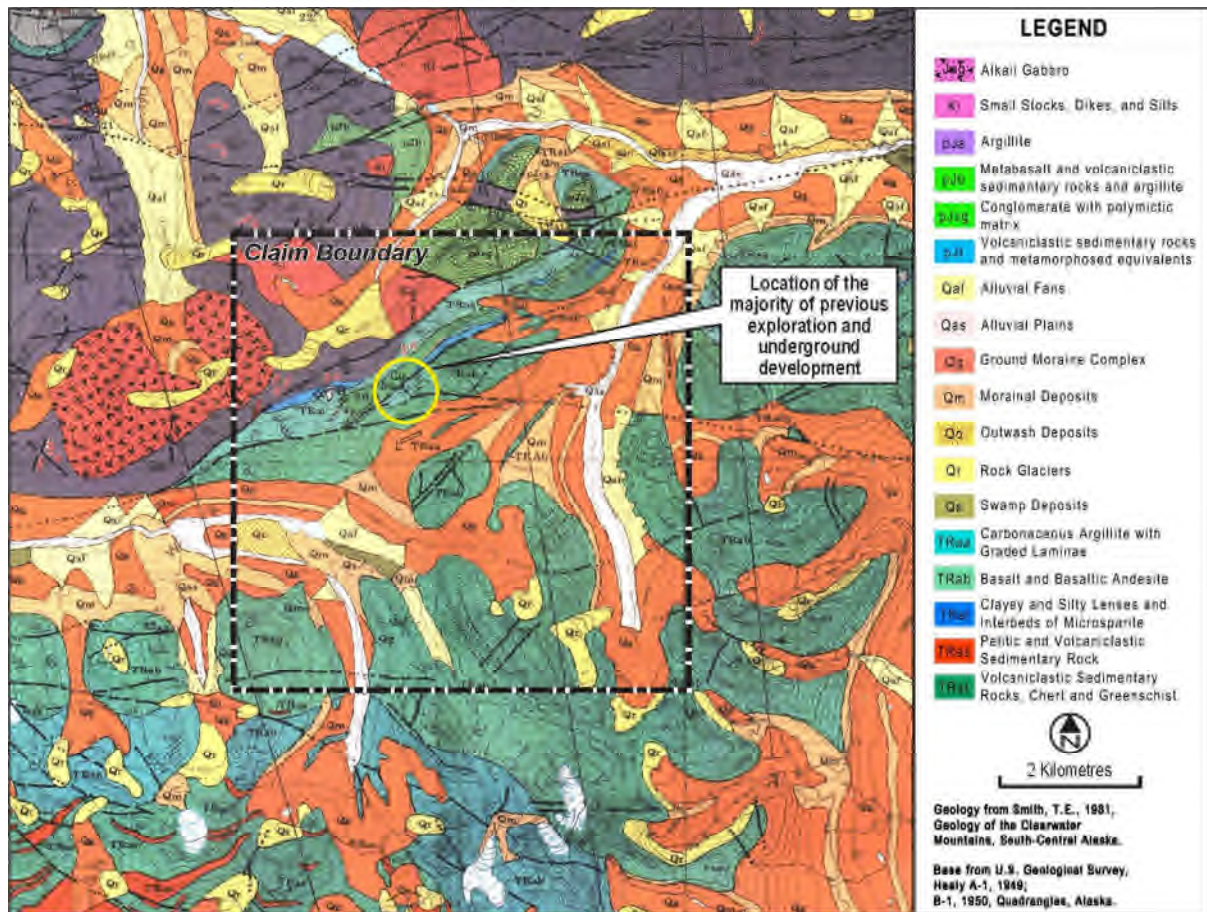


Figure 6. Regional geology at the Caribou Dome Copper Project, showing the argillite sequence that hosts the known mineralisation extends for more than 4,000 metres within the Project area.