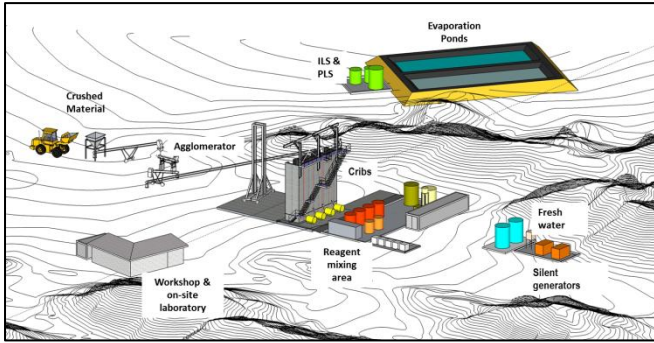


Status of Construction Activities at the Etango Heap Leach Demonstration Plant

Plant Design & Layout



Sample Preparation

Waste and ore material was blasted within the Onkelo region of the deposit and is being transported to the plant site. The blended material will be separately crushed in a three stage crushing process including high pressure grinding rolls to deliver a product specification similar to the ore feed characteristics assumed in the Definitive Feasibility Study ("DFS").



Blasted Alaskite Ore

Rehabilitation of the areas from which the ore and waste sample were sourced has already commenced.



Ore and Waste Rock Stockpiles

Site Establishment

Site levelling and establishment of the office infrastructure has been completed. Movement around the plant site has

been restricted to designated areas only to minimise the disturbed footprint.



Site Establishment

Heap Leach Cribbs

The first concrete pour of the crib walls has been completed.



Heap Leach Cribbs

Evaporation Pond

The civil works on the evaporation pond have been completed and will shortly be followed by installation of the double plastic liners.



Evaporation Pond