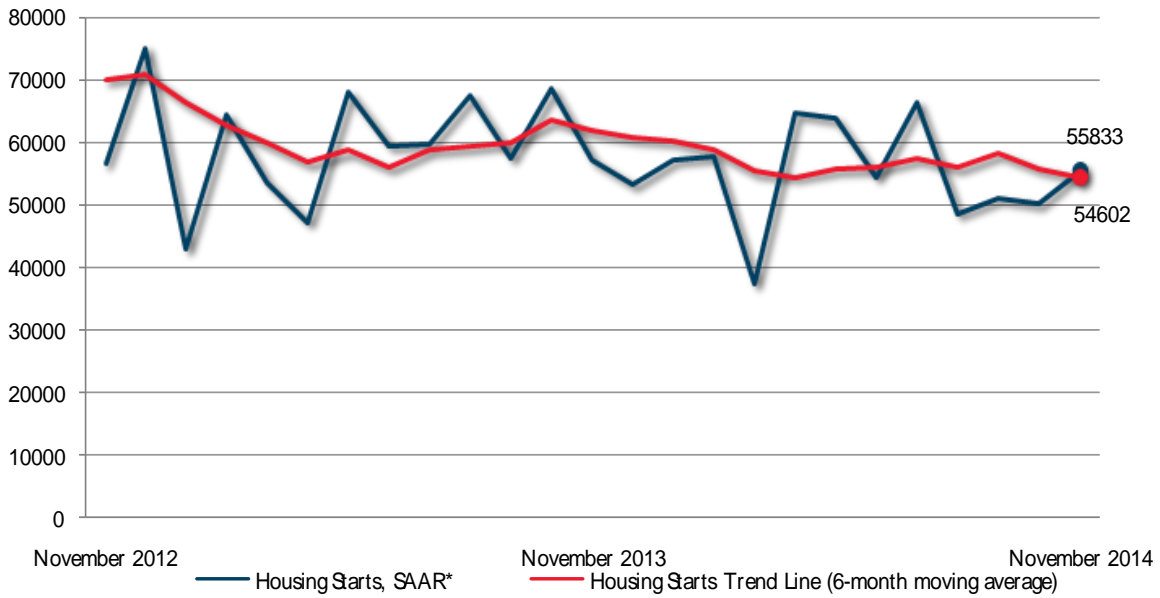


Provincial Housing Starts - Urban Areas



Preliminary Housing Start Data November 2014		
Ontario	October 2014	November 2014
<i>Trend</i> ¹ , urban centres ²	55,949	54,602
SAAR, urban centres ²	50,338	55,833
	November 2013	November 2014
Actual, urban centres ²		
November - Single-detached	2,007	1,959
November - Multiples	3,305	3,055
November - Total	5,312	5,014
January to November - Single-detached	19,586	19,548
January to November - Multiples	34,529	31,817
January to November - Total	54,115	51,365

Source: CMHC

¹The trend is a six-month moving average of the monthly seasonally adjusted annual rates (SAAR).

²Urban centres with a population of 10,000 and over.

Detailed data available upon request