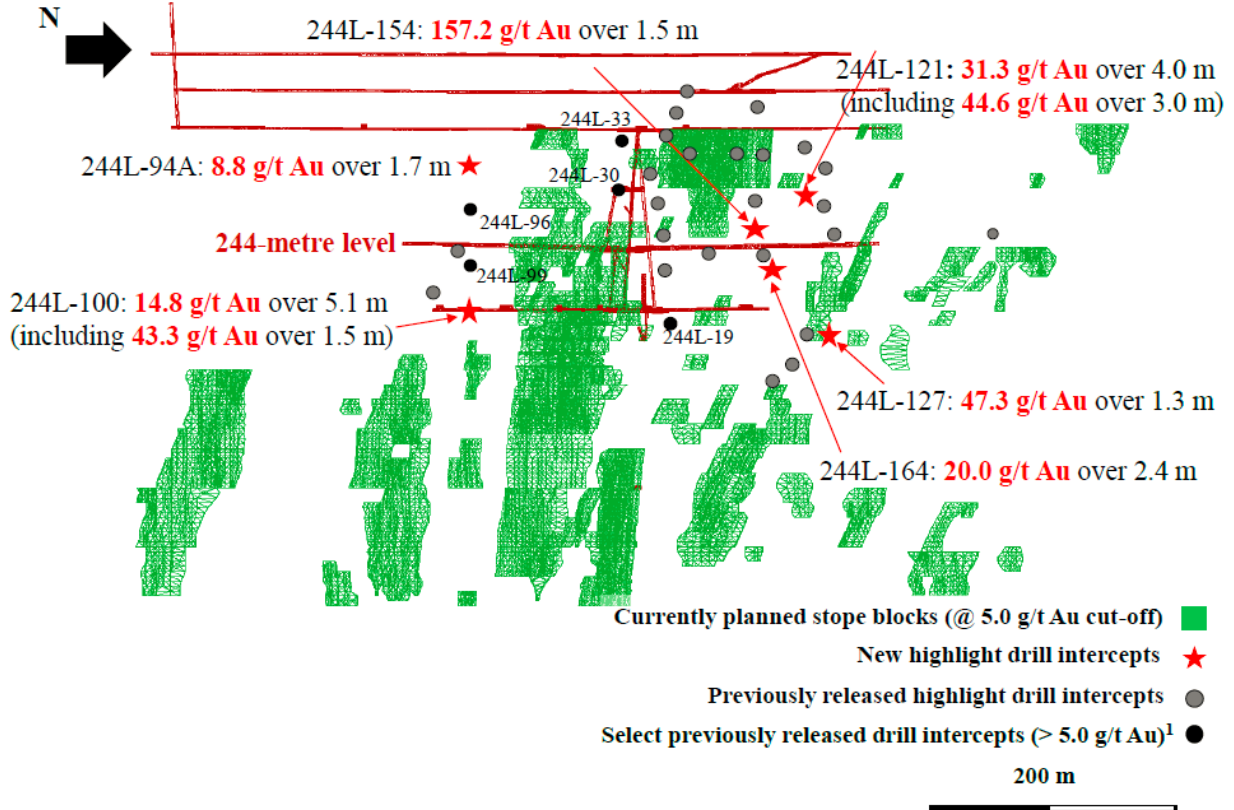


Figure 1: Long section view of infill drilling (facing west) – highlight drill intercepts



<sup>1</sup>These intercepts were not plotted in Figure 1 of the Rubicon news release dated September 25, 2014, but are included to demonstrate continuity of mineralization

Figure 2: Plan view of infill drilling – highlight drill intercepts

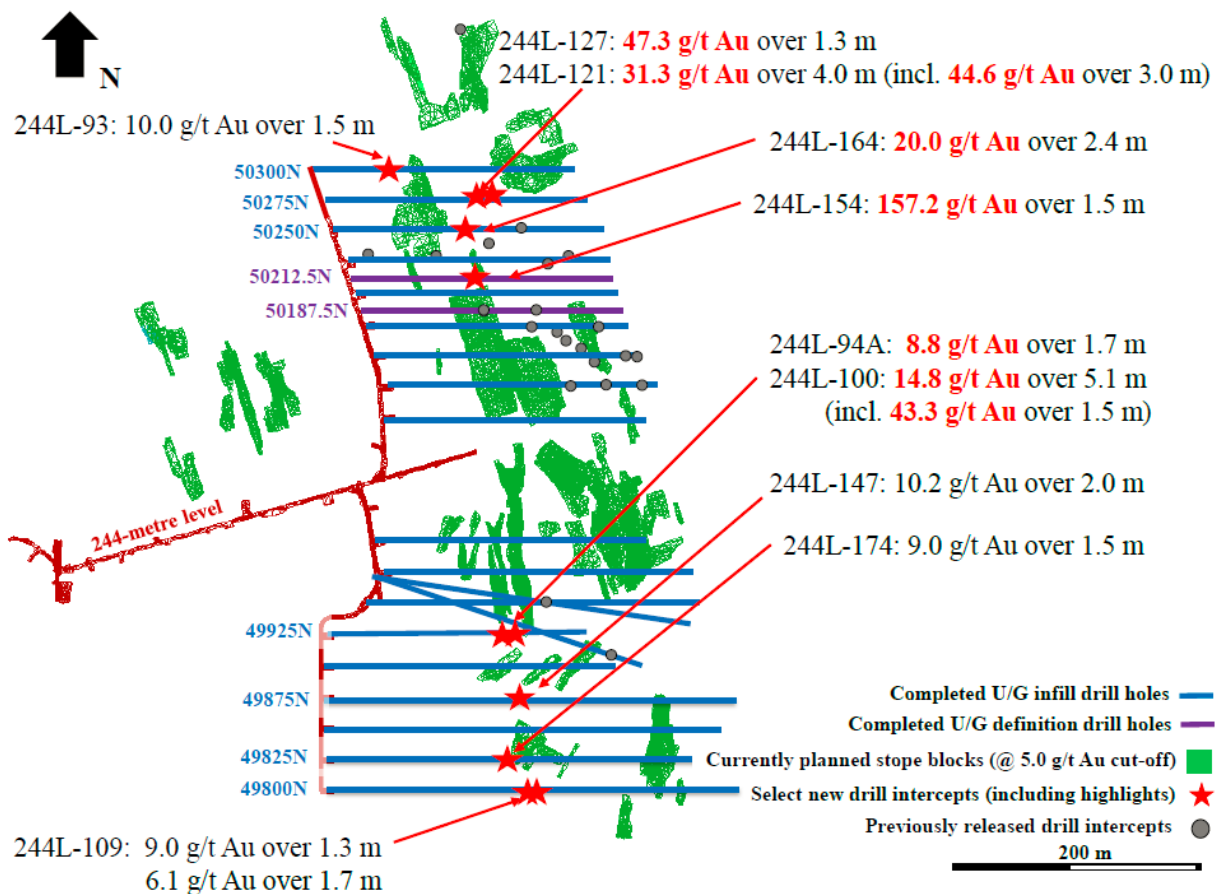
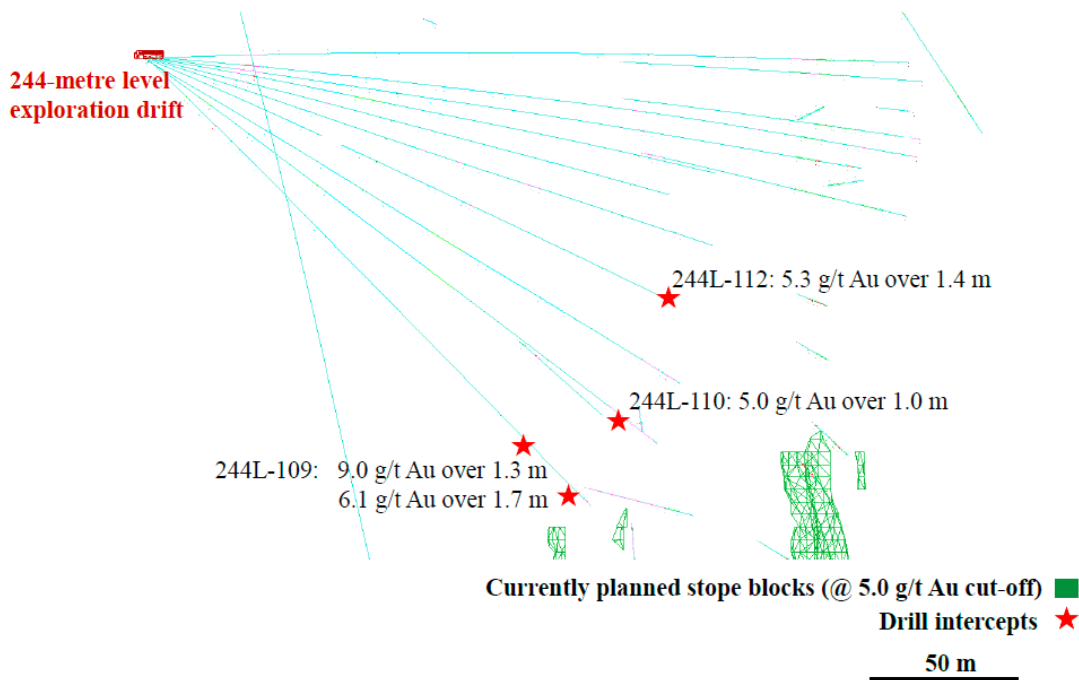
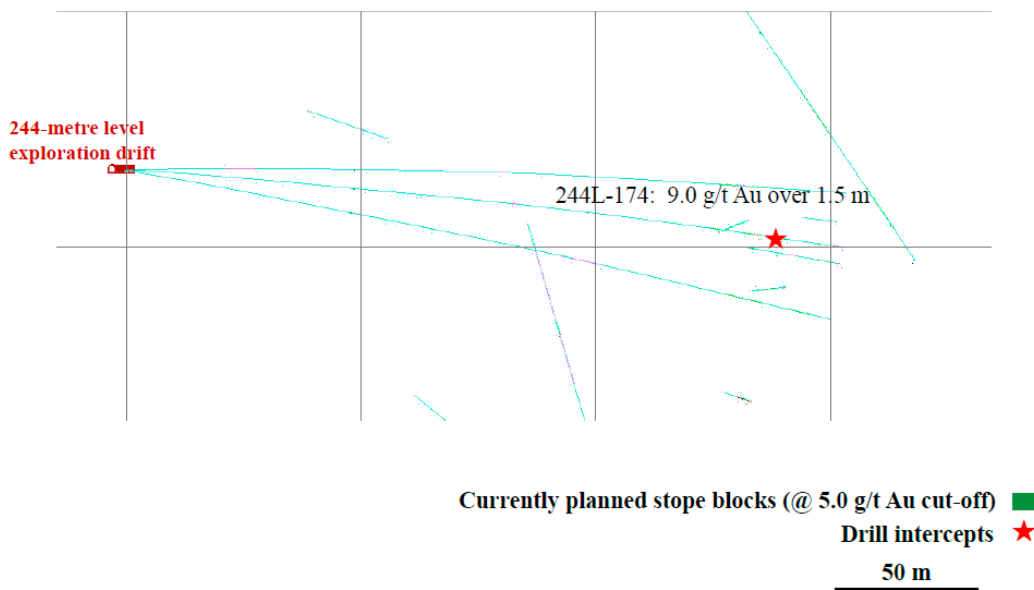


Figure 3: Cross section of infill drilling, south to north sequence, 49800N to 50300N

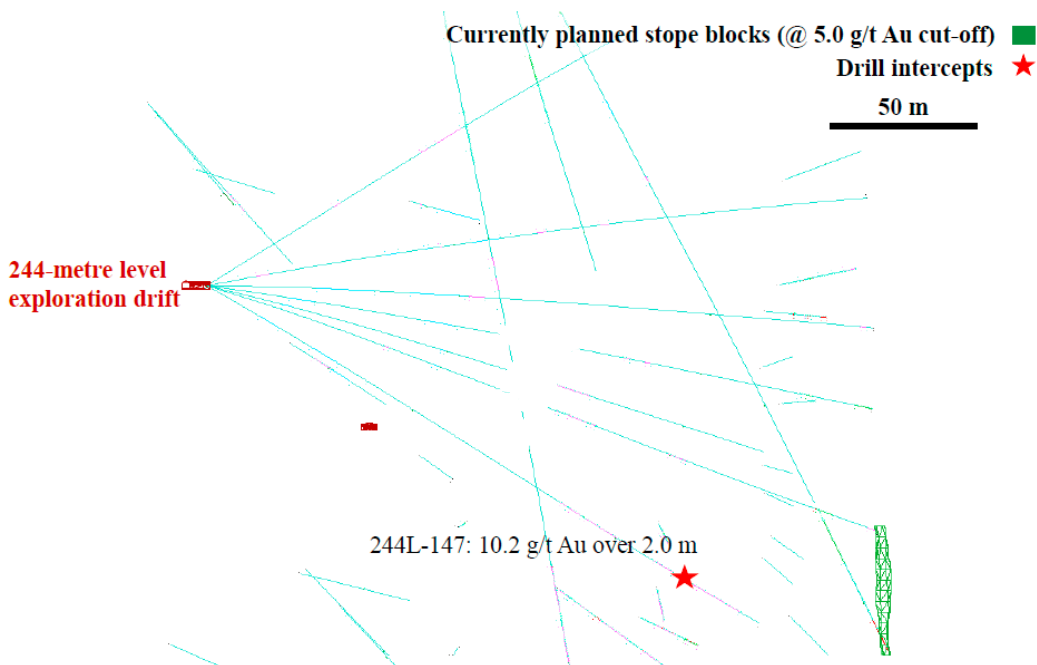
### Section 49800N (facing north)



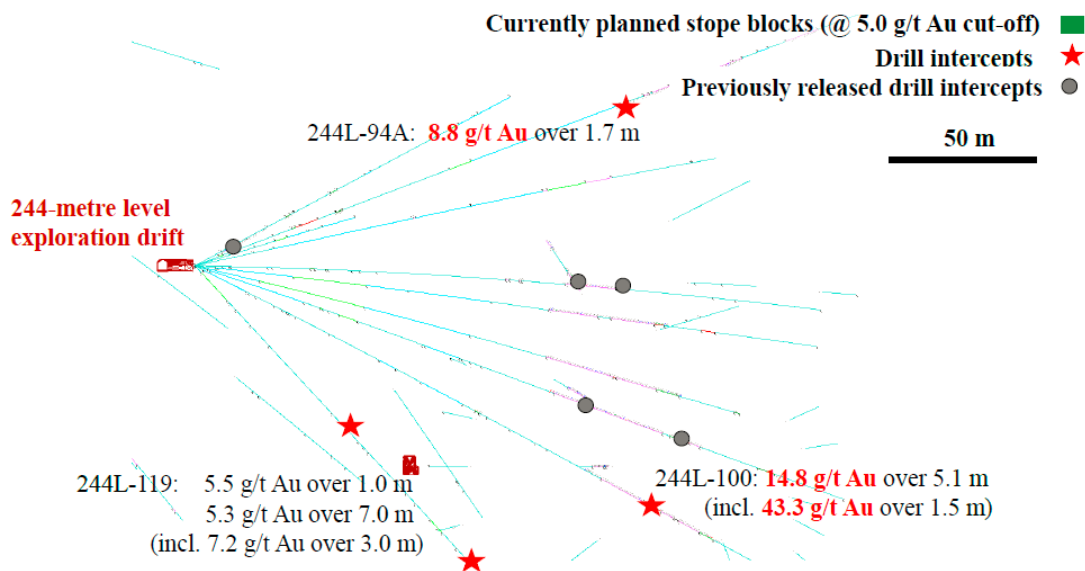
### Section 49825N (facing north)



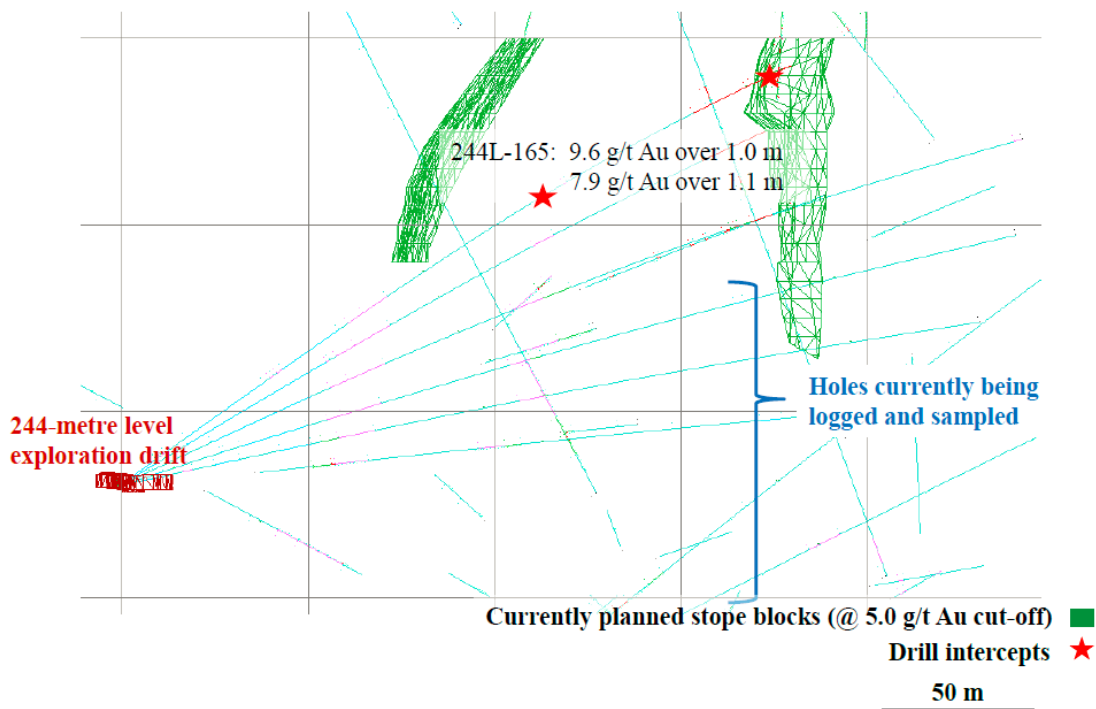
## Section 49875N (facing north)



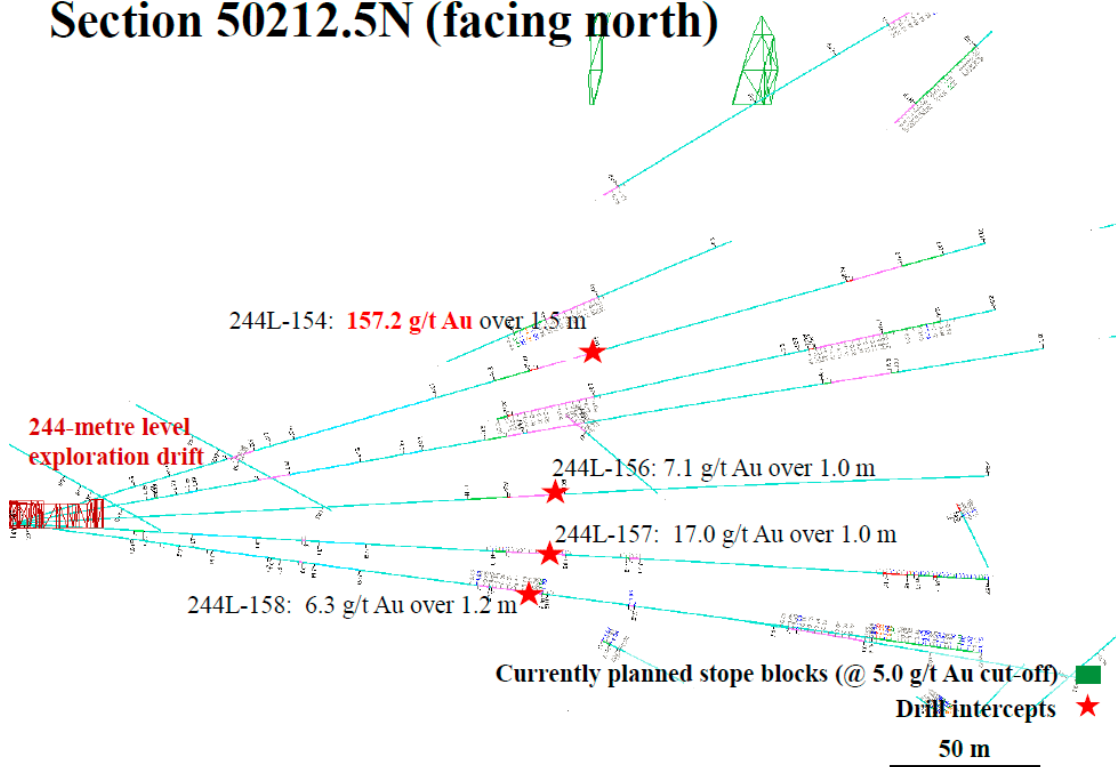
## Section 49925N (facing north)



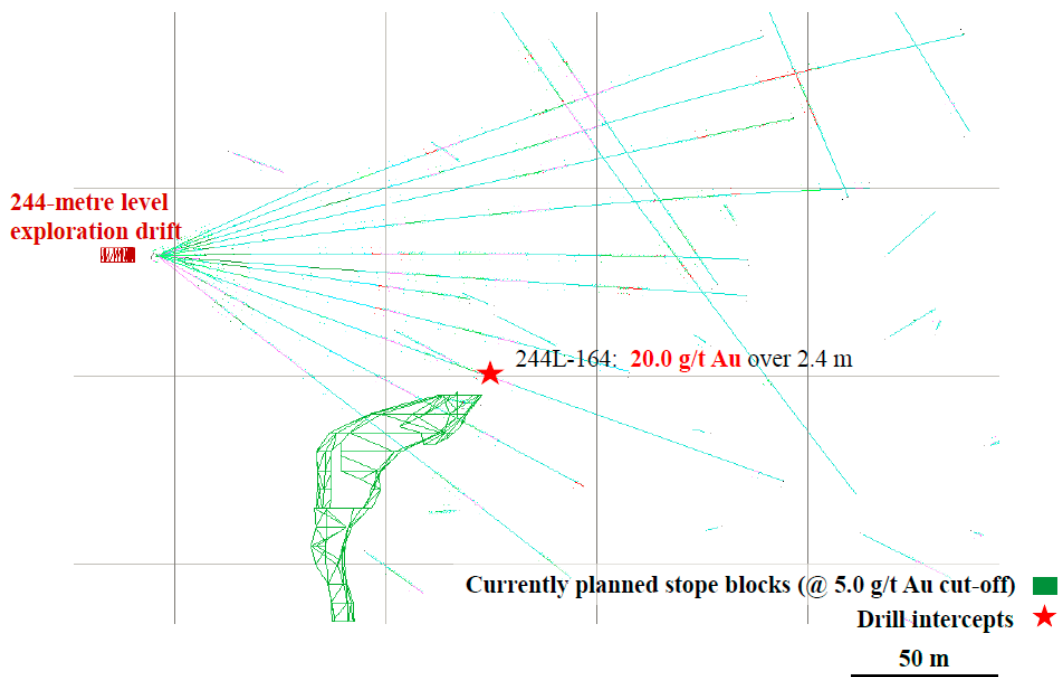
## Section 50187.5N (facing north)



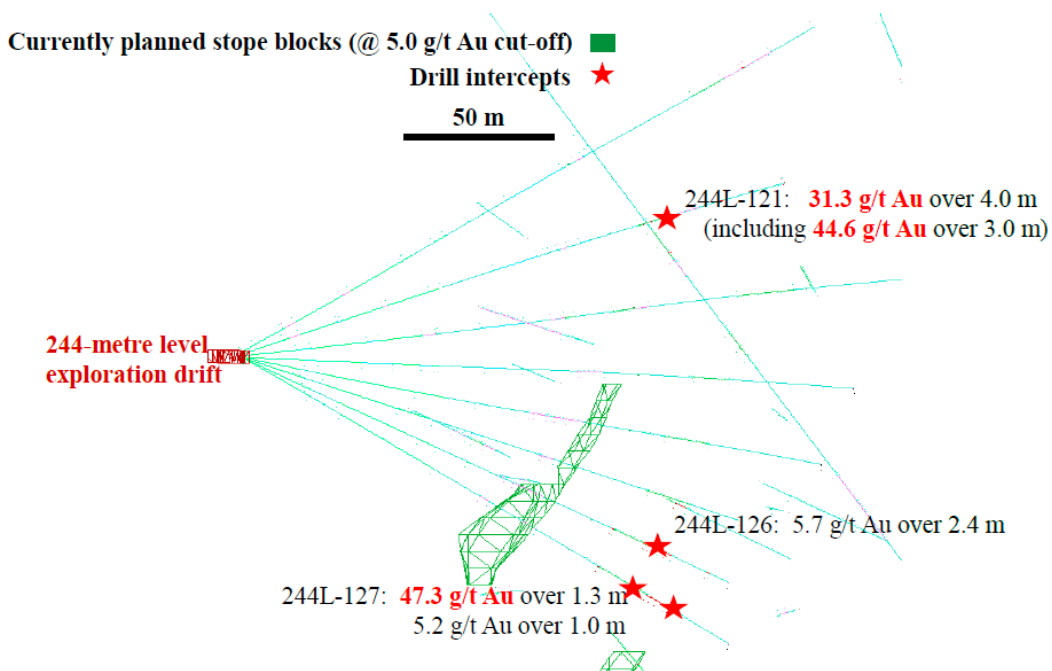
## Section 50212.5N (facing north)



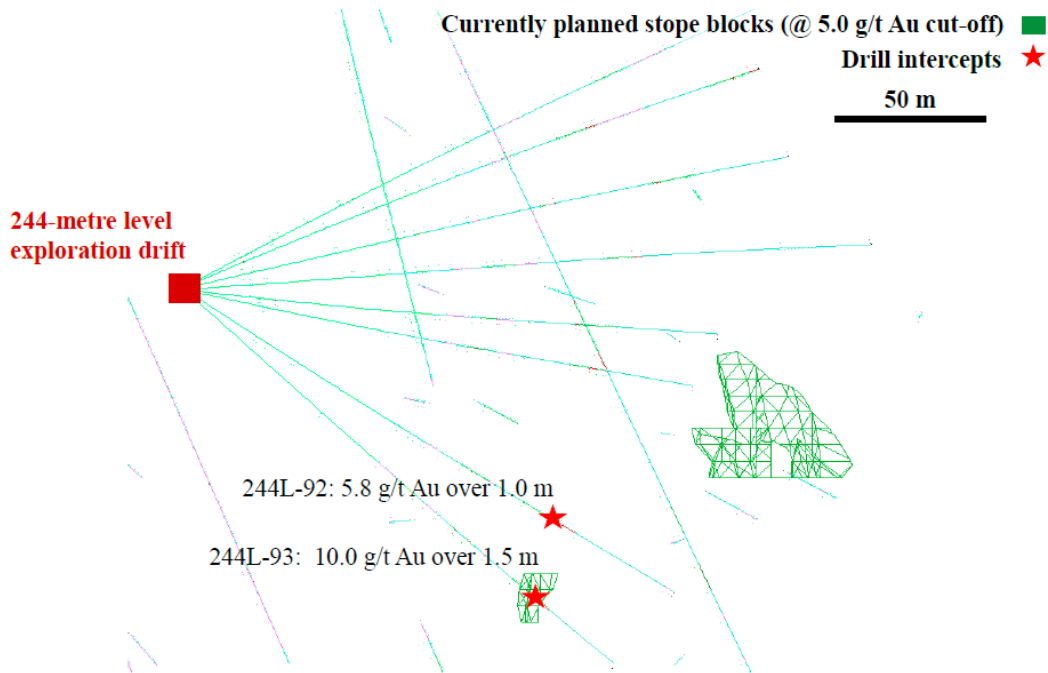
## Section 50250N (facing north)



## Section 50275N (facing north)



## Section 50300N (facing north)

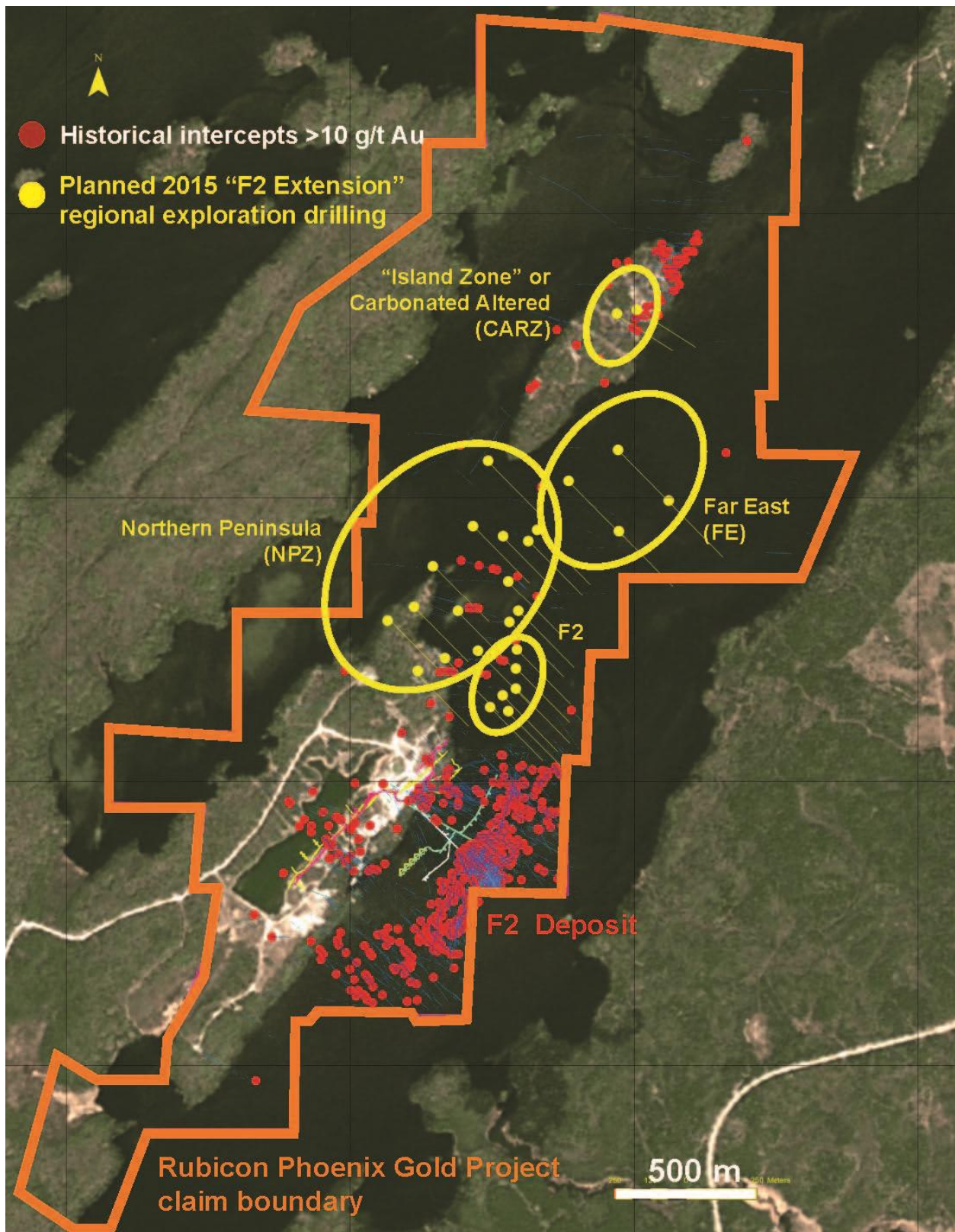


PR15-1 For more information, contact Allan Candelario, CFA, Vice President of Investor Relations  
Phone: 1.866.365.4706 | E-mail: [ir@rubiconminerals.com](mailto:ir@rubiconminerals.com) | [www.rubiconminerals.com](http://www.rubiconminerals.com)

Rubicon Minerals Corporation | Suite 400-44 Victoria St. | Toronto, ON, CANADA M5C 1Y2

The Toronto Stock Exchange has not reviewed and does not accept responsibility for the adequacy or accuracy of this release

Figure 4: 2015 Regional exploration drilling program – plan view



PR15-1 For more information, contact Allan Candelario, CFA, Vice President of Investor Relations  
Phone: 1.866.365.4706 | E-mail: [ir@rubiconminerals.com](mailto:ir@rubiconminerals.com) | [www.rubiconminerals.com](http://www.rubiconminerals.com)

Rubicon Minerals Corporation | Suite 400-44 Victoria St. | Toronto, ON, CANADA M5C 1Y2

The Toronto Stock Exchange has not reviewed and does not accept responsibility for the adequacy or accuracy of this release