

Figure 1 – Longitudinal section showing the results of new and previous sampling on the San Antonio Vein and surrounds, along with mineral resource categories for this vein from the 2013 mineral resource model. The gold grades of composited channel sample results are color-coded according to the legend.

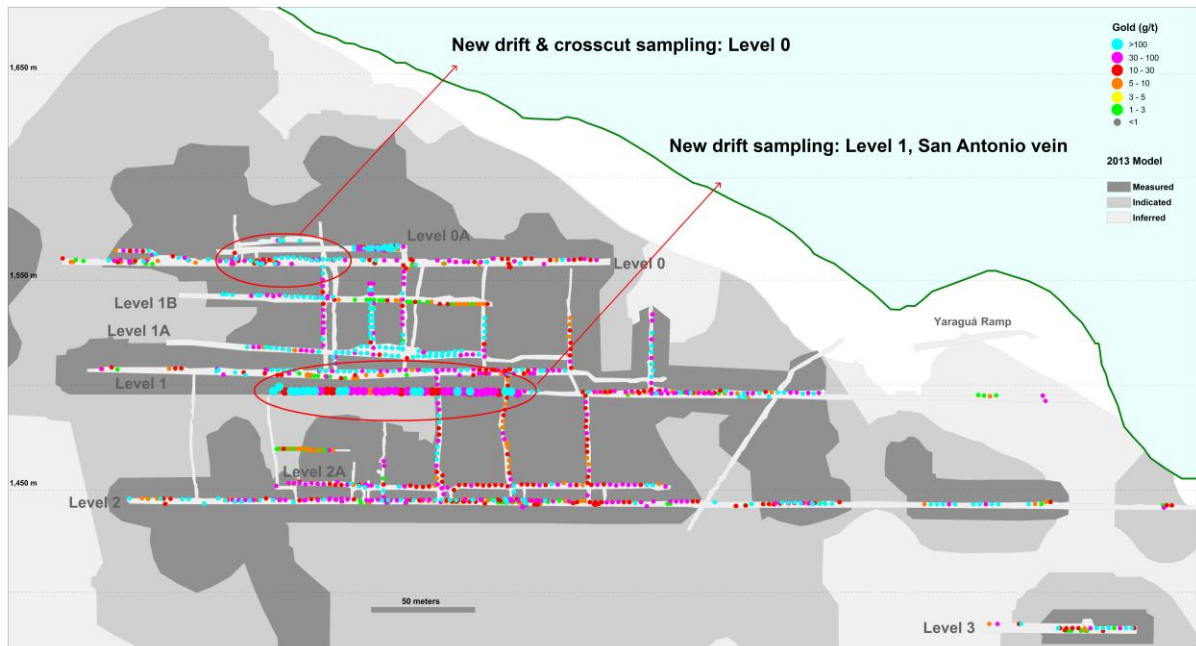


Figure 2 – Plan view of drift and cross-cut sampling on Level 0, Yaraguá, also showing the envelopes of master vein domains in the current Yaraguá mineral resource model. The gold grades of composited channel sample results are color-coded according to the legend.

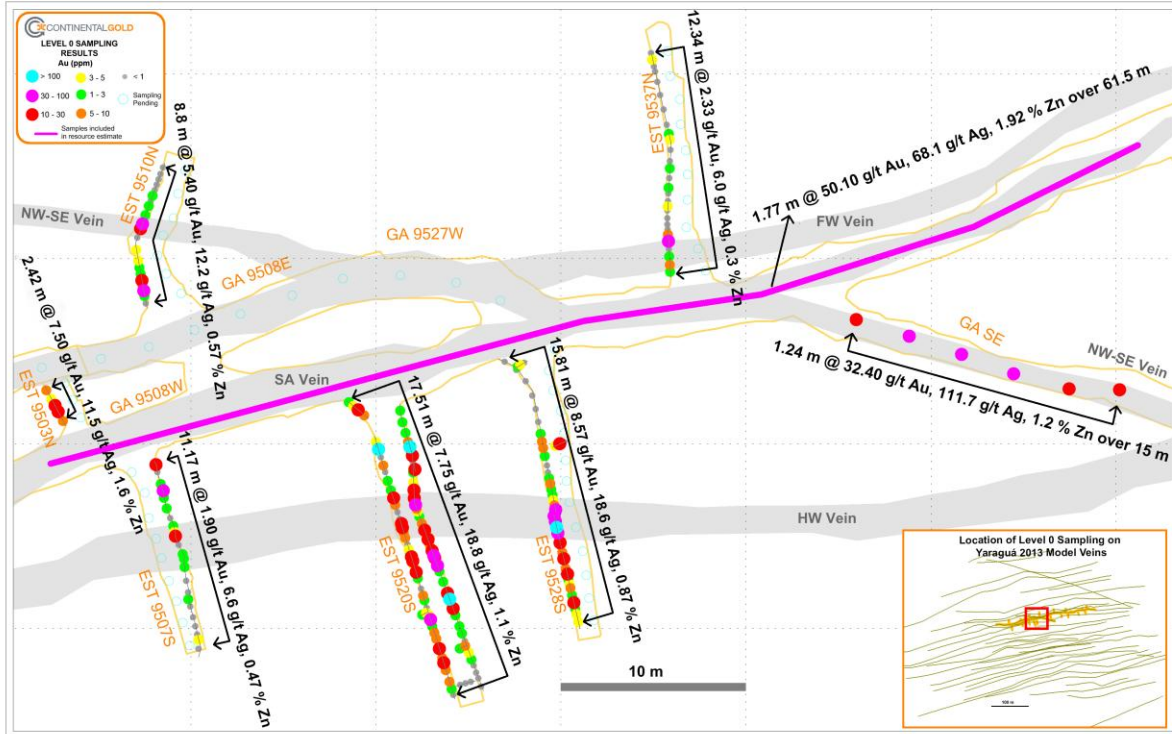


Figure 3 – Plan view of drift sampling on San Antonio Vein, Level 1, Yaraguá. The gold grades of composited channel sample results are color-coded according to the legend.

