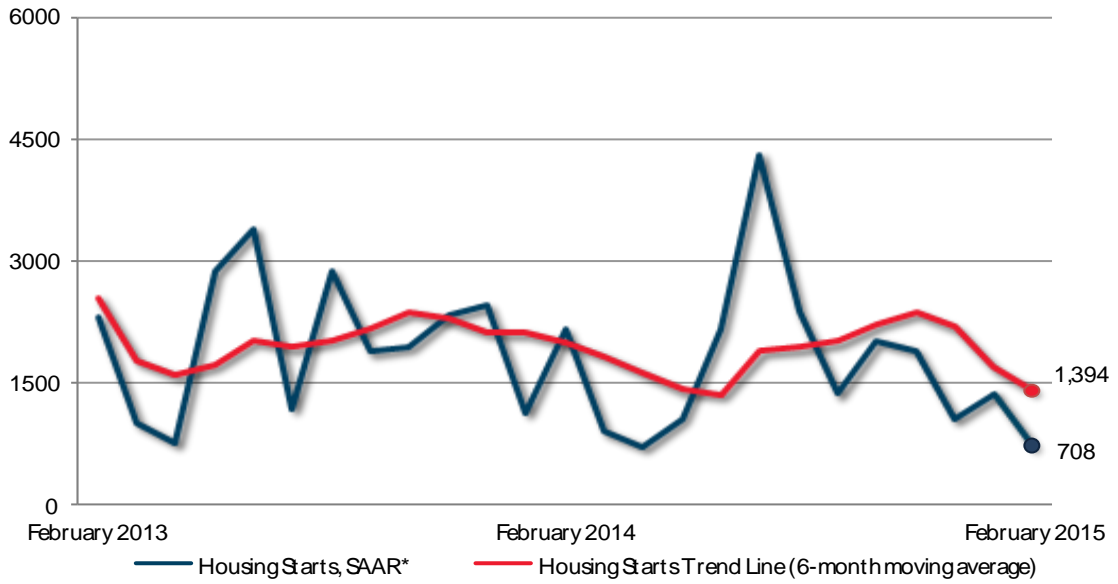


## New Brunswick Housing Starts - Urban Areas



Preliminary Housing Start Data February 2015		
New Brunswick, Centres 10,000+	January 2015	February 2015
<i>Trend</i> <sup>1</sup> , urban centres <sup>2</sup>	1,670	1,394
SAAR, urban centres <sup>2</sup>	1,351	708
	February 2014	February 2015
Actual, urban centres <sup>2</sup>		
February - Single-Detached	18	15
February – Multiples	28	2
February – Total	46	17
January to February - Single-Detached	44	31
January to February - Multiples	42	62
January to February - Total	86	93

Source: CMHC

<sup>1</sup>The trend is a six-month moving average of the monthly seasonally adjusted annual rates (SAAR).

<sup>2</sup>Urban centres with a population of 10,000 and over.

Detailed data available upon request

**New Brunswick Preliminary Actual Housing Start Data  
February / 2014-2015**

Urban Centres	Single-Detached		Multiples		Total	
	2014	2015	2014	2015	2014	2015
<b>Urban Centres 100,000<sup>+</sup></b>						
Moncton CMA	5	11	22	0	27	11
Saint John CMA	3	1	6	0	9	1
<b>Urban Centres 50,000-99,999</b>						
Fredericton CA	8	1	0	0	8	1
<b>Other Urban Centres (Estimated)<sup>1</sup></b>	2	2	0	2	2	4
<b>Total Urban Starts<sup>1</sup></b>	18	15	28	2	46	17

**New Brunswick Preliminary Actual Housing Start Data  
January to February / 2014-2015**

Urban Centres	Single-Detached		Multiples		Total	
	2014	2015	2014	2015	2014	2015
<b>Urban Centres 100,000<sup>+</sup></b>						
Moncton CMA	13	19	34	56	47	75
Saint John CMA	8	4	6	1	14	5
<b>Urban Centres 50,000-99,999</b>						
Fredericton CA	17	3	2	0	19	3
<b>Other Urban Centres (Estimated)<sup>1</sup></b>	6	5	0	5	6	10
<b>Total Urban Starts<sup>1</sup></b>	44	31	42	62	86	93

<sup>1</sup>Urban starts include an estimate for the areas 10,000-49,999 for the first two months of the quarter and are subject to revision(s) after quarterly enumeration in the third and final month of the quarter.