

- Artha REE Property (Jujuy)
- Artha Precious/Base Metal Property (Jujuy)
- Mineral deposits
- Non-Artha Exploration/Mining Lease



Regional Geology

- EMis - Eocene-Lower Miocene - Continental sedimentary rocks with evaporite inter
- EOo - Eocene-Oligocene (40-28 Ma) - Intrusive rocks and porphyries
- JKig - Jurassic-Lower Cretaceous (200-100 Ma) - Intrusive rocks
- Kg - Cretaceous (130-80 Ma) - Intrusive rocks
- KsPs - Upper Cretaceous-Paleocene - Continental sedimentary rocks with marine in
- Laguna - Lake - n/a - n/a
- Mmd - Middle Miocene (17-11 Ma) - Domes and subvolcanic porphyries
- Mmv - Middle Miocene (17-11 Ma) - Intermediate to mafic volcanic rocks
- MPis - Miocene-Pliocene - Continental sedimentary rocks with pyroclastic interca
- Msd - Upper Miocene (11-5 Ma) - Domes and dome complexes
- Mss - Upper Miocene - Continental sedimentary rocks with evaporite intercalation
- Mst - Upper Miocene (11-5 Ma) - Pyroclastic rocks
- Msv - Upper Miocene (11-5 Ma) - Intermediate to mafic volcanic rocks
- OMiv - Oligocene-Lower Miocene (27-17 Ma) - Volcanic and volcano-sedimentary r
- Pig - Lower Paleozoic (540-420 Ma) - Intrusive rocks
- Pis - Lower Paleozoic - Marine and continental sedimentary rocks
- Piv - Lower Paleozoic - Marine sedimentary rocks with interbedded volcanic seque
- PIQe - Pliocene-Quaternary - Saline and lacustrine deposits, salt flats
- PIQs - Pliocene-Quaternary - Fluvial, alluvial, eolian, colluvial, glacial and f
- PIQt - Pliocene-Quaternary (<5 Ma) - Pyroclastic rocks
- PIQv - Pliocene-Quaternary (<5 Ma) - Intermediate to mafic volcanic rocks. Inc

Map 1: Artha Properties, Jujuy Province

Pirquitas NW Prospect

Coincident geochemical and very strong IP Chargeability Anomaly (up to 60mv/v at 100m below surface). Up to 2g/t Au at surface.

Noeilla Breccia Prospect

Coincident geochemical and strong circular IP Chargeability Anomaly (up to 32mv/v at 150m below surface). Coincident Gossanous Breccia at surface.

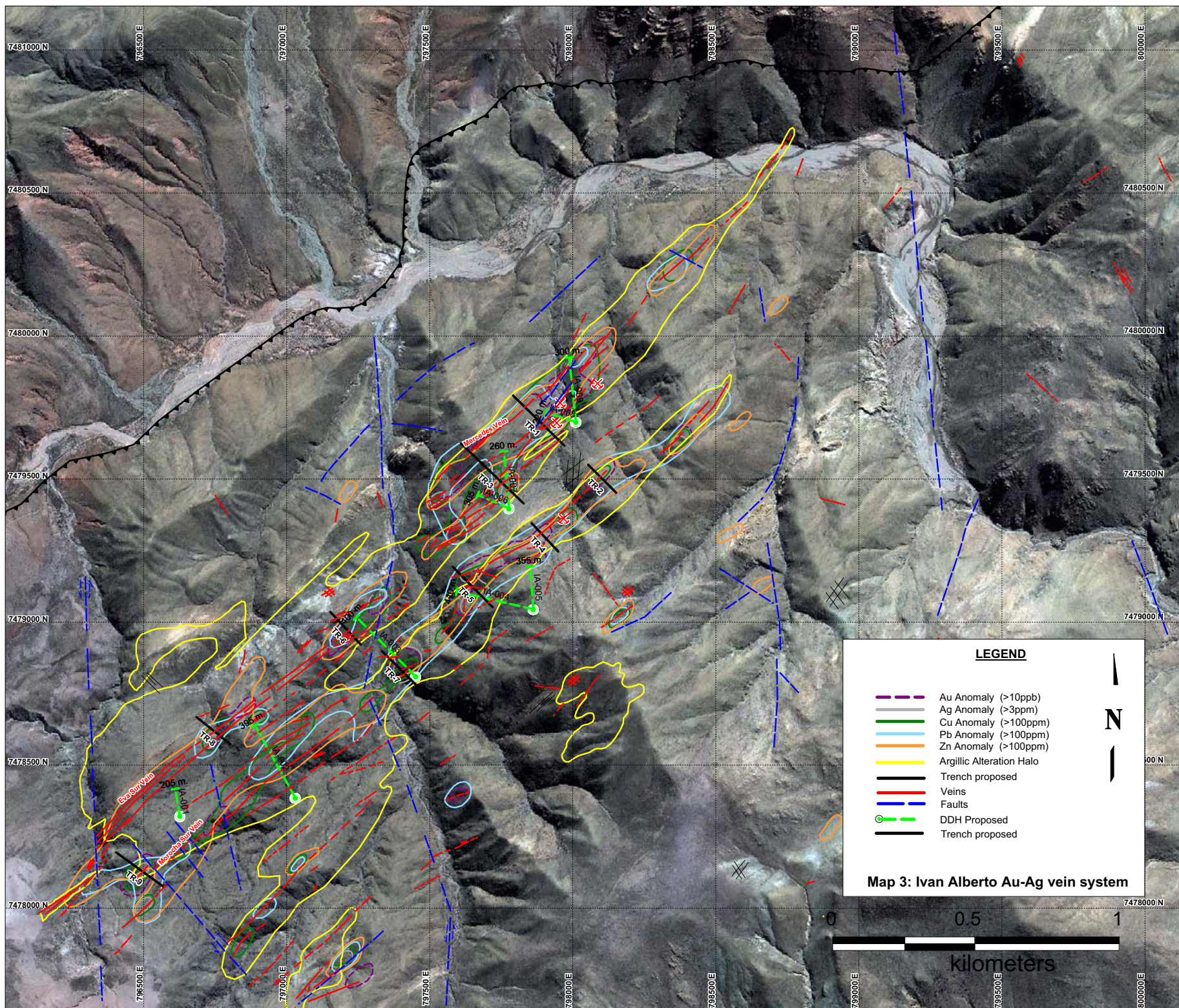
Artha's Crosby Property

Artha's Pirquitas North Property

Pirquitas Mine

Regional Anticline Axis - Host Structure for Pirquitas Mine

Map 2: Pirquitas Property targets



LEGEND

- Au Anomaly (>10ppb)
- Ag Anomaly (>3ppm)
- Cu Anomaly (>100ppm)
- Pb Anomaly (>100ppm)
- Zn Anomaly (>100ppm)
- Argillic Alteration Halo
- Trench proposed
- Veins
- Faults
- DDH Proposed
- Trench proposed

Map 3: Ivan Alberto Au-Ag vein system