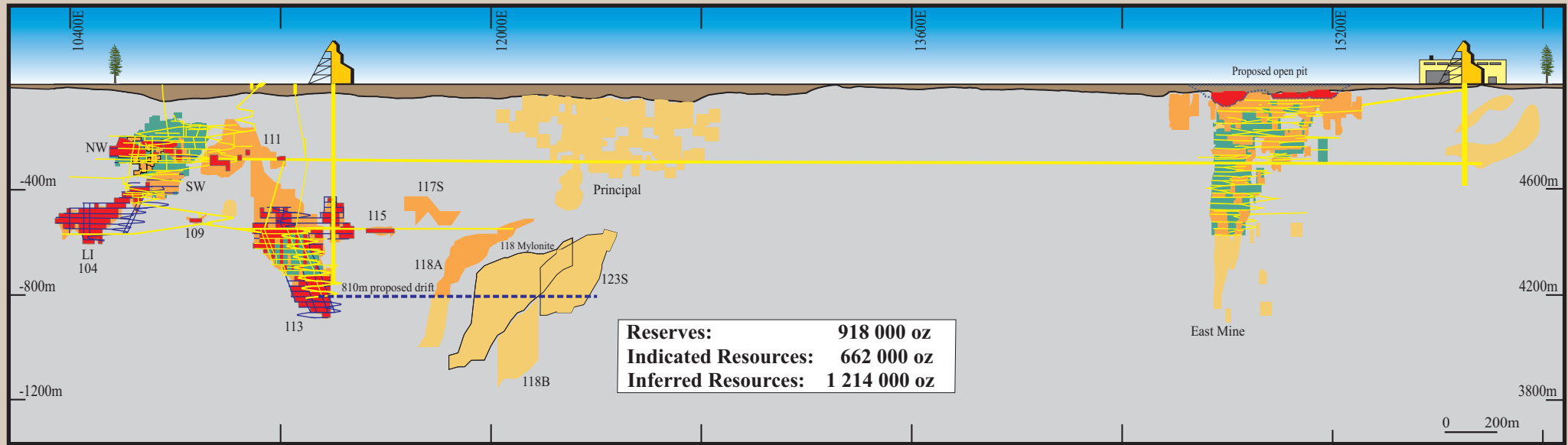
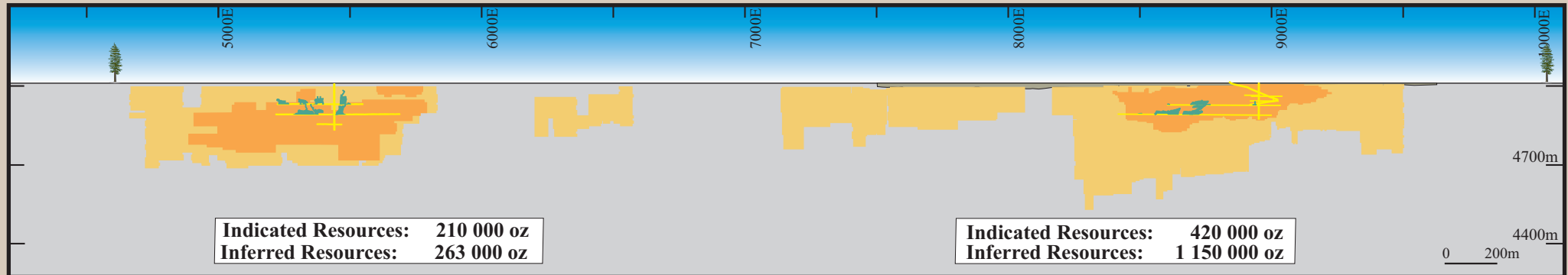


# CASA BERARDI GOLD MINE Composite Longitudinal Section



← 5 km →

# JOANNA PROJECT Composite Longitudinal Section



- Proven & Probable Reserves
- Measured & Indicated Resources  
*(Note: At Joanna refers to Indicated only)*
- Inferred Resources
- Past Production
- Existing Infrastructure
- Proposed Development

**AURIZON MINES LTD.**  
**CASA BERARDI & JOANNA PROJECT**  
**QUEBEC**  
**Mineral Reserves & Resources**  
 April 1, 2008