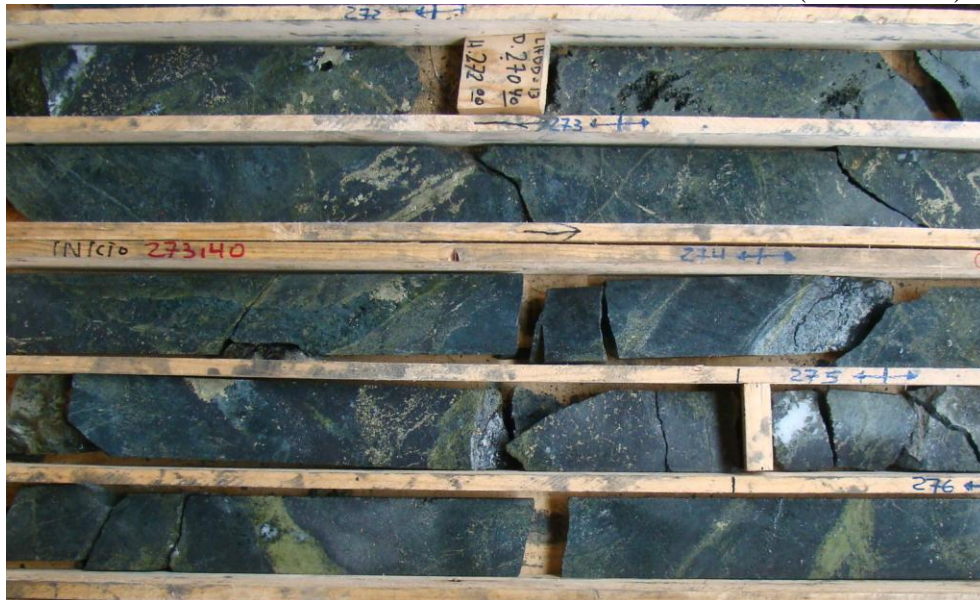
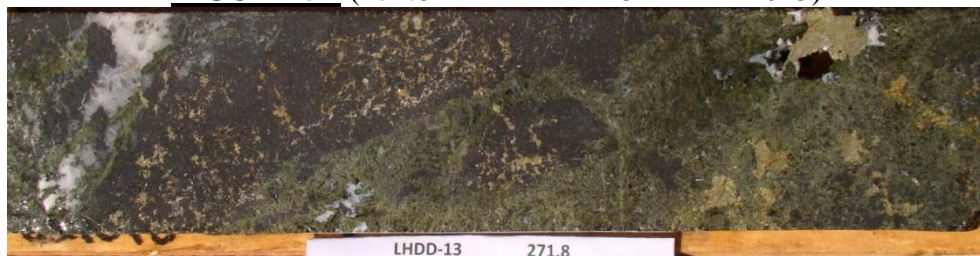


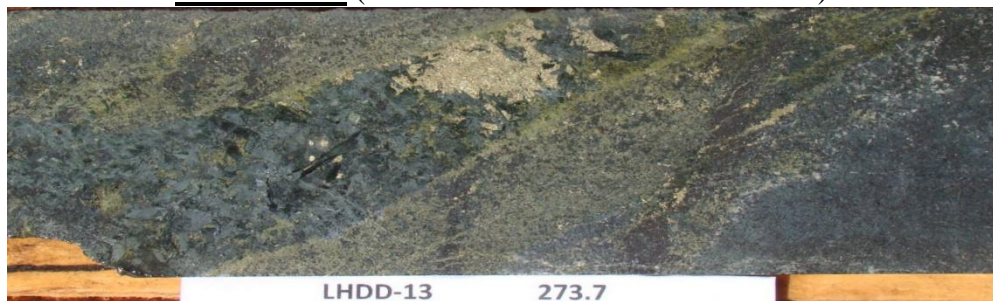
**FIGURE 5A**  
SHOWS STOCKWORK AND DISSEMINATED CHALCOPYRITE AND PYRITE IN  
MAGNETITE - Grade of 4 m from 272-276 m is 1.44% Cu (LHDD-013).



**FIGURE 5B** (271.8 m - DETAIL OF LHDD-013)



**FIGURE 5C** (273.7 m - DETAIL OF LHDD-013)



**FIGURE 5D** (274.5m - DETAIL OF LHDD-013)

