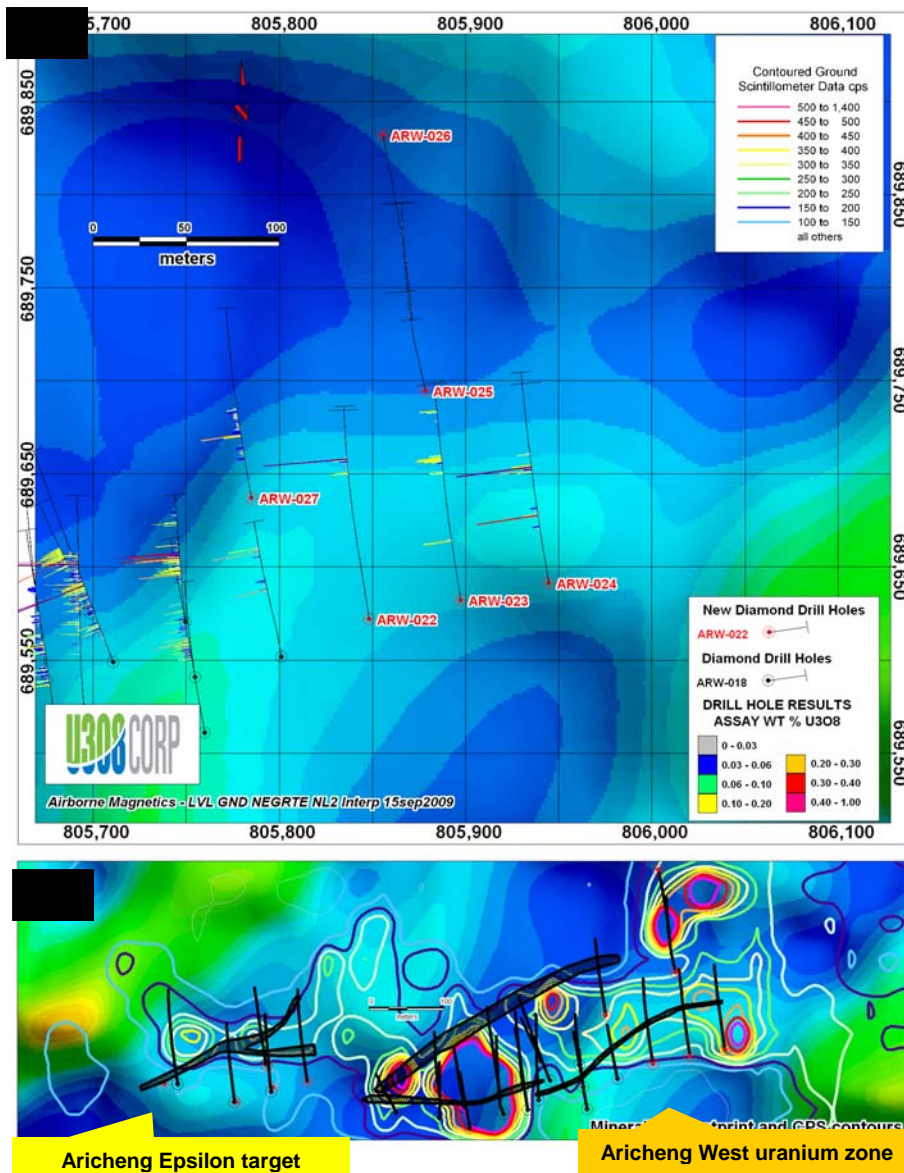


**Figure 2 – Drill Hole Locations at Aricheng West extension and Aricheng Tau**



- 2A. Plan view of the location of the four bore holes (ARW-022, ARW-023, ARW-24 and ARW-027) drilled in the scout drilling program on the extension of the Aricheng West target and the two holes (ARW-025 and ARW-026) drilled at Aricheng Tau (results reported in this press release). The collar position of each hole is shown as a dot and the extent of each inclined hole is shown as a black line.  $U_3O_8$  grade (%) is shown as a histogram along the trace of the bore hole. The coloured background is magnetic data from a field survey (dark blue represents the least magnetic areas while green areas have higher magnetism). Radiometric data is marked by contour lines.
- 2B. Wider view of Figure 2A above shows the location of the drilling on the mineralized extension of Aricheng West relative to the uranium zones previously drilled at Aricheng West and at Aricheng Epsilon.