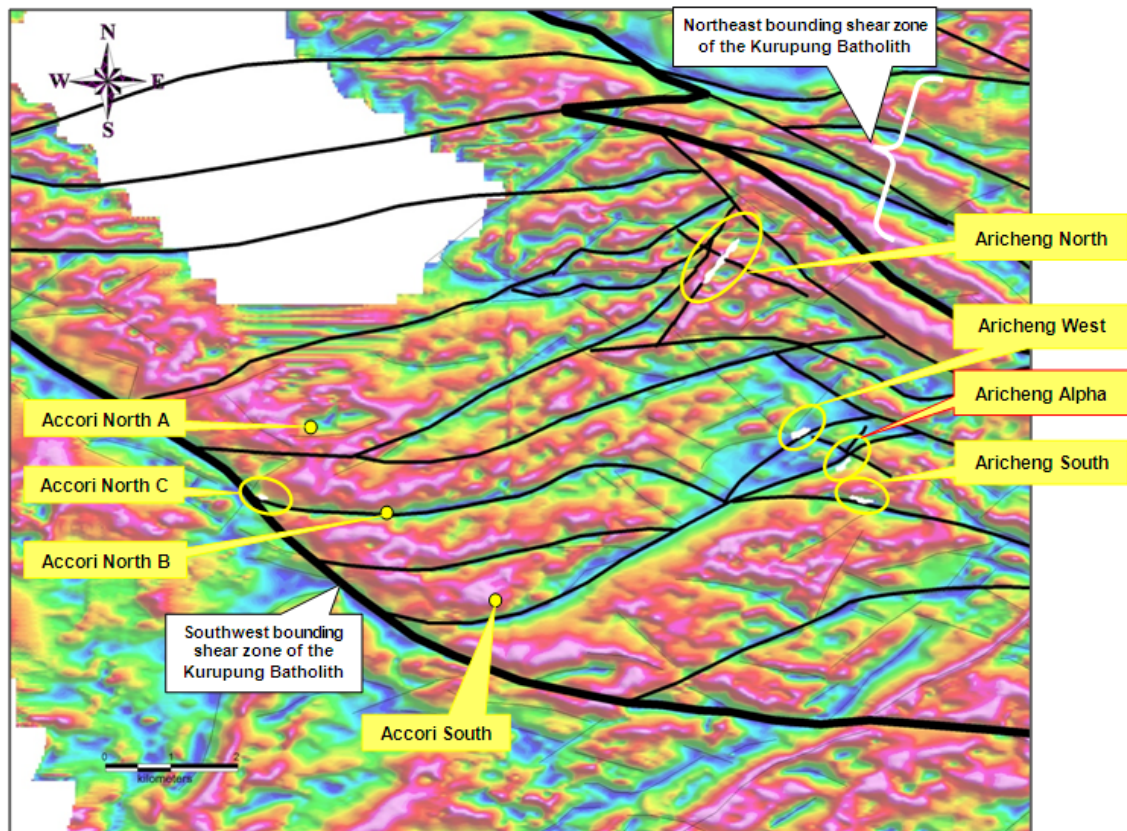


**Figure 1 – Map of Airborne Magnetic Data and Interpreted Structures in the Kurupung Batholith**



Map of airborne magnetic data from the Kurupung Batholith overlain with interpreted structures (black lines) that extend between the bounding shear zones of the batholith. Cool colours represent rocks with little magnetism while warm colours represent magnetic rocks. White irregular areas outline the footprints of uranium mineralization drilled by U3O8 Corp. so far at Aricheng North, Aricheng West, Aricheng Alpha, Aricheng South and Accori North C.

Substantially all of the uranium found by U3O8 Corp. to date lies within demagnetized faults (cool colour areas in the magnetic data that are interpreted as faults and marked by black lines). The mineralized zone at Aricheng Alpha (labelled in red and whose assay results are reported in this press release) is located along one of these weakly magnetic faults in the Kurupung Batholith.