

Figure 5 – Pipeline of Uranium-Bearing Structures in the Kurupung Uranium District

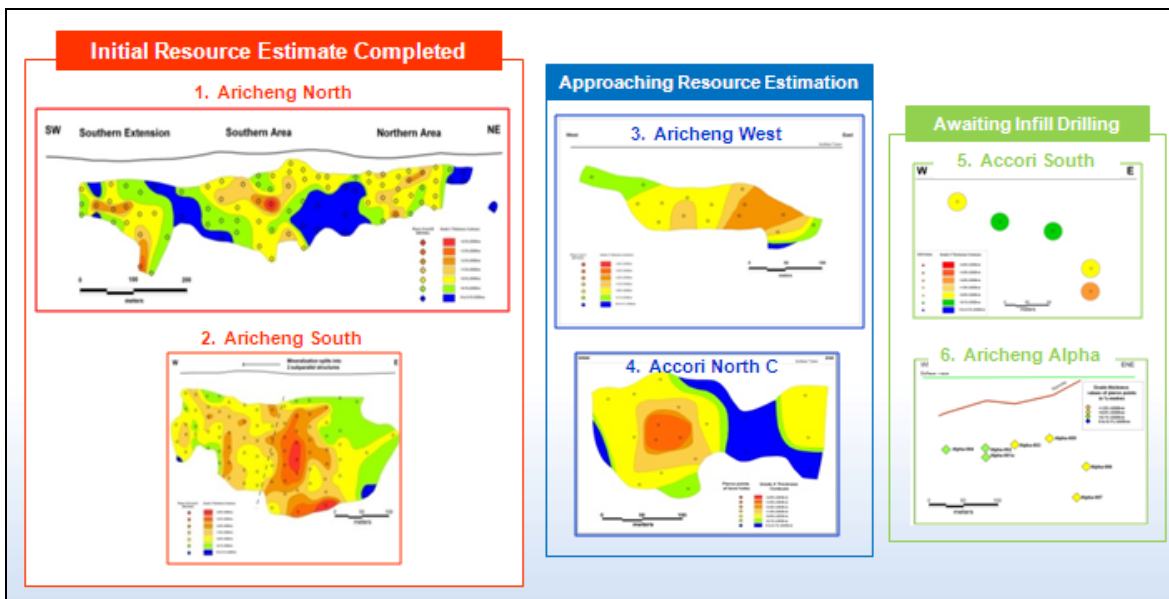


Diagram shows the long sections and exploration status of the six mineralized structures identified by U3O8 Corp's drilling to date in the Kurupung Batholith – Aricheng North, Aricheng South, Aricheng West, Accori North C, Accori South and Aricheng Alpha. In its current scout drilling program, U3O8 Corp. is focused on identifying additional uranium-bearing structures to build on its pipeline of targets ready for infill drilling and subsequent resource estimation, and outline the potential size of the Kurupung system in the short term.

Exploration of a target typically progresses from right to left: scout drilling to confirm the presence of uranium, infill drilling to establish the size and grade of the principal mineralized zones, additional infill drilling as required for resource estimation to resource calculation, as applicable.