

- Drilling
Type/Status
- Extension/Executed
 - Extension/In Progress
 - Extension/Programmed
 - ◆ In Fill/Executed
 - ◆ In Fill/In Progress
 - ◆ In Fill/Programmed
 - Metal

— Section

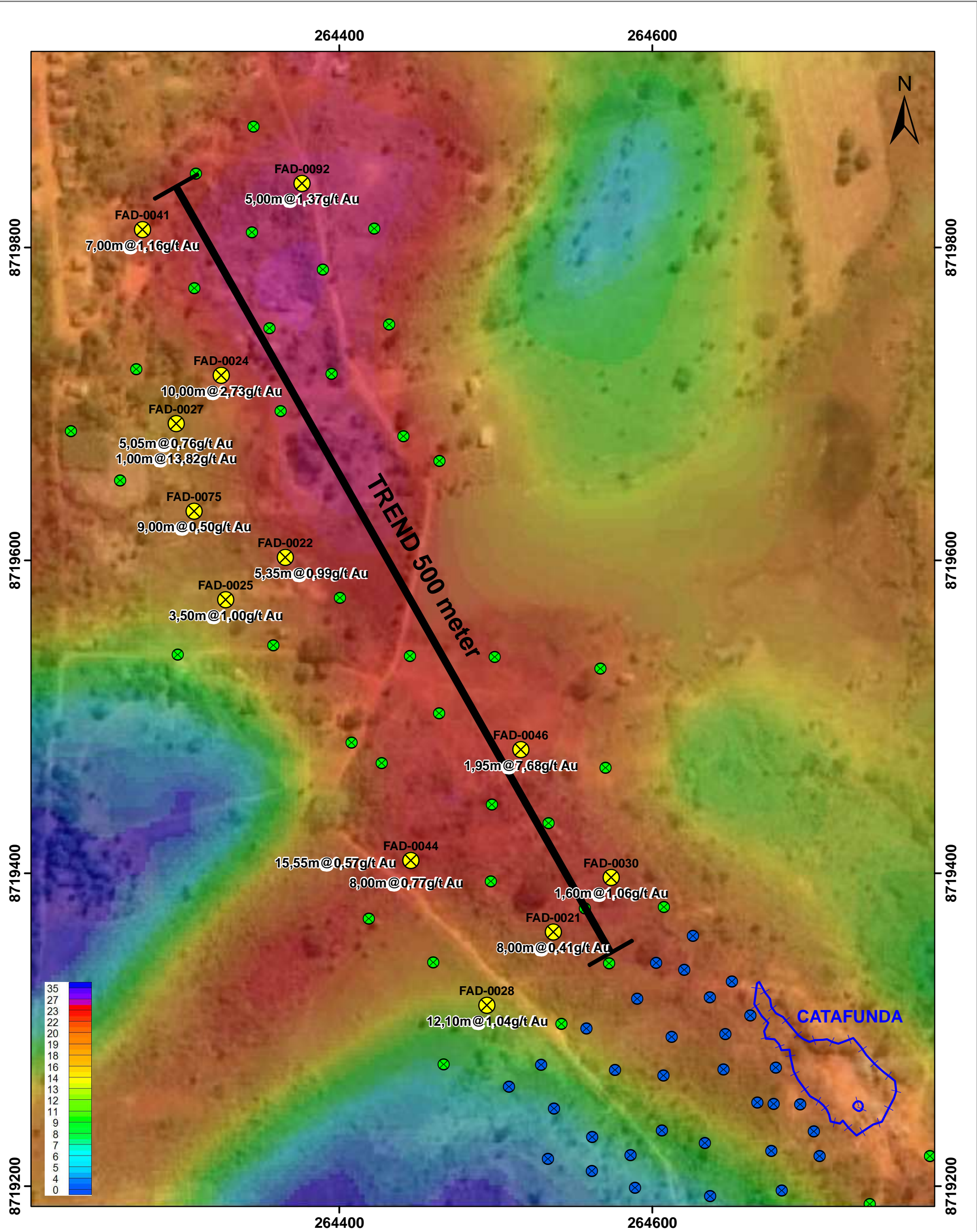


1:5000
0 50 100 150 m

**ALMAS PROJECT
ALMAS
TOCANTINS STATE**

DRILLING AND
GOOGLE EARTH MAP
ARROZ TARGET

SAD69 - UTM 23S
SOURCE: RIO NOVO GOLD, ANEEL,
IBGE, ANA, CPRM
DATE: 2011/01/12



⊗ Catafunda North Results

Drilling Executed

⊗ Results are Pending

⊗ Catafunda Infill Drilling

+ Catafunda Garimpo



Rio Novo
GOLD INC

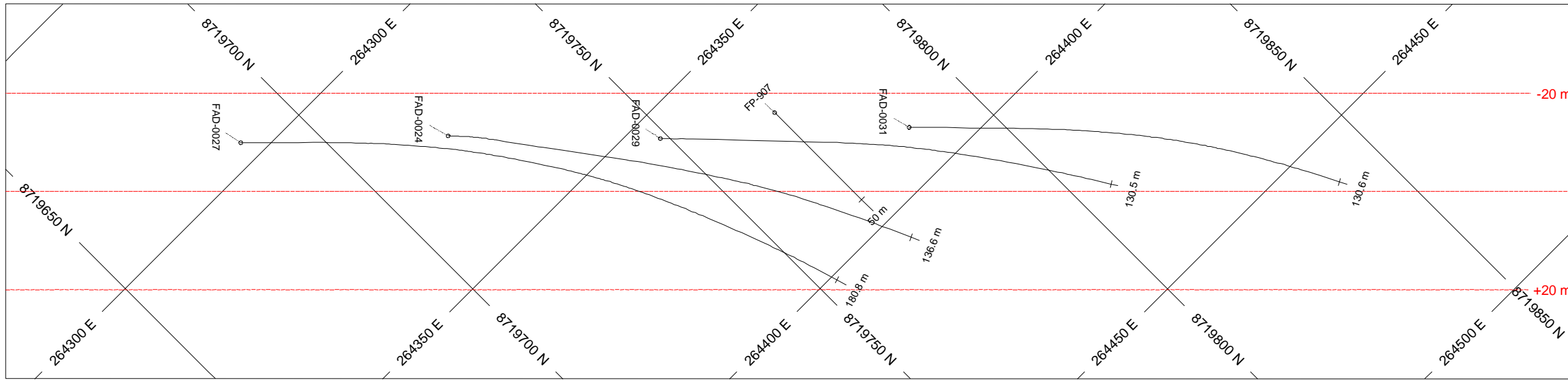
1:2250

0 20 40 60 m

**ALMAS PROJECT
ALMAS
TOCANTINS STATE**

DRILLING AND
IP CHARGEABILITY MAP
EXTENSION CATAFUNDA NORTH

SAD69 - UTM 23S
SOURCE: RIO NOVO GOLD, ANEEL,
IBGE, ANA, CPRM
DATE: 2011/01/14

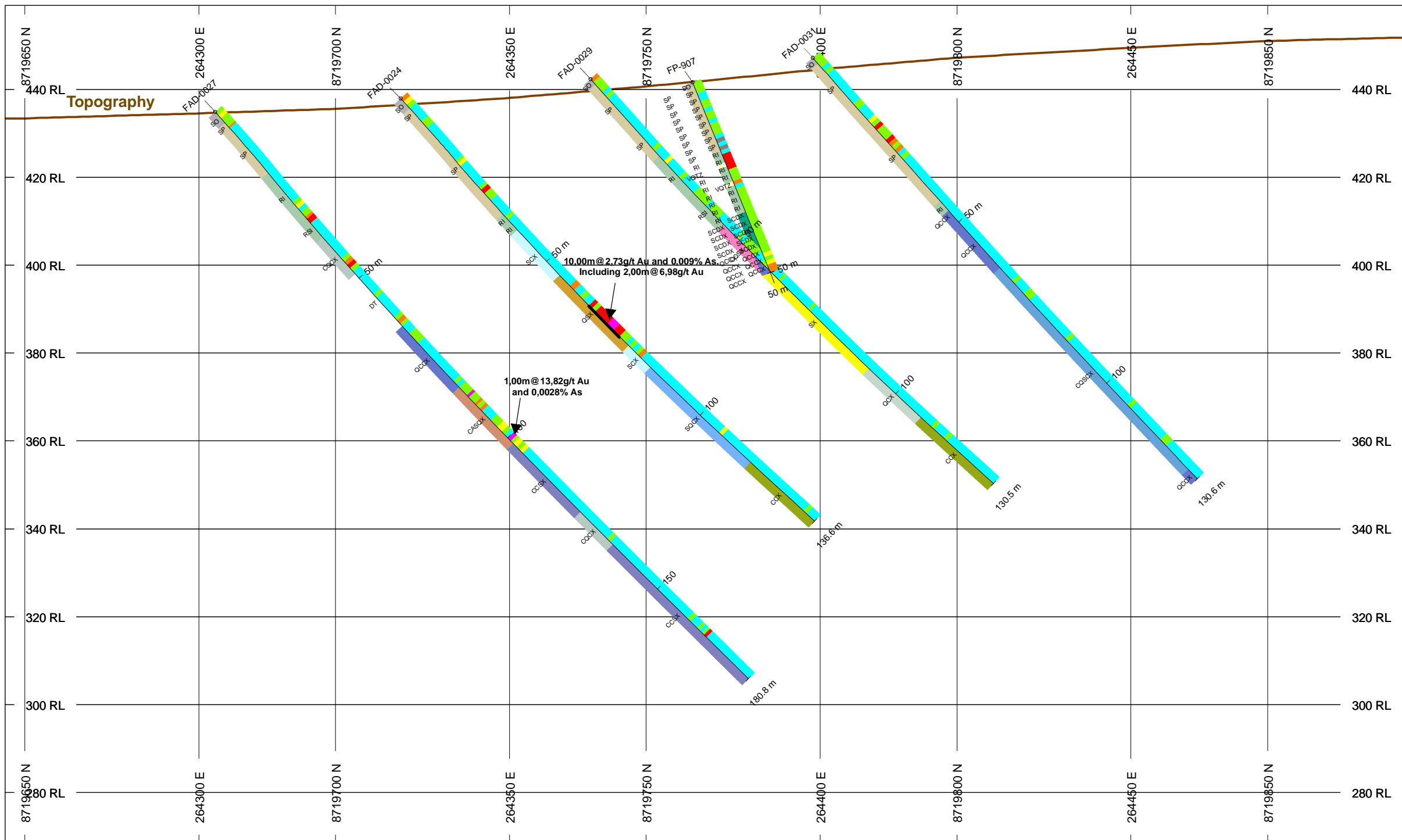


HOLES PLOTTED

TOTAL 5

FAD-0024 FAD-0027 FAD-0029 FAD-0031
 FP-907

**SECTION FAD-0024 / FAD-0027
 ARROZ TARGET
 ALMAS PROJECT**



BAR GRAPHS	L/R	COL
AU_PPM	R	[Color Scale]

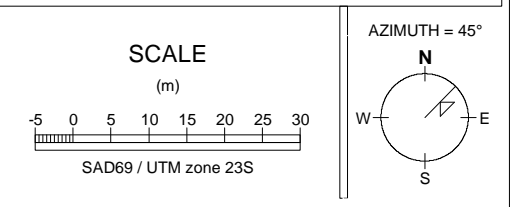
NUMBER BANDS	L/R	COL	RANGE
AU_PPM	R	[Color Scale]	3, 1, 0.5, 0.3, 0.05, 0

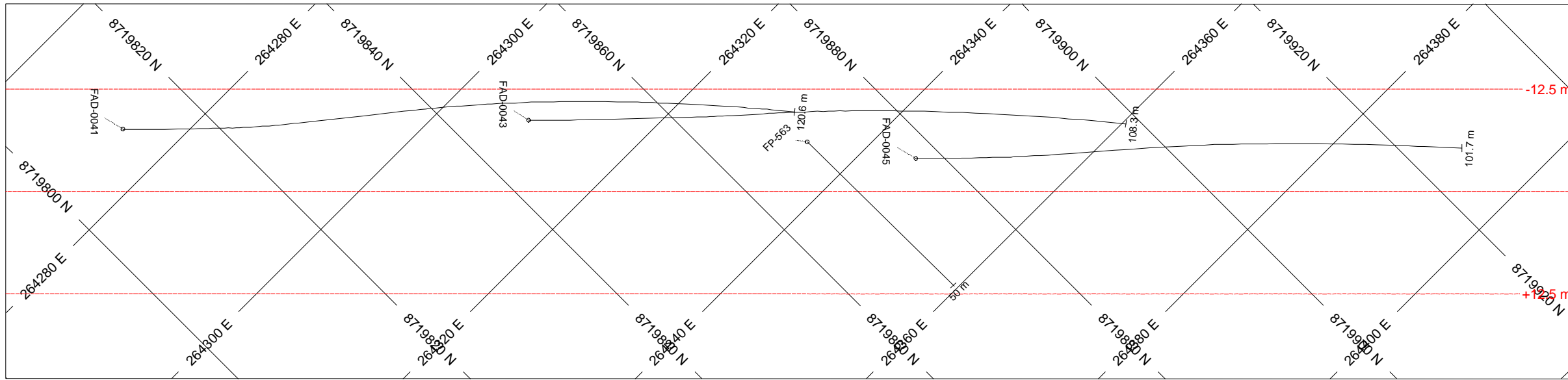
ROCK CODES	PAT	LABEL	DESCRIPTION
Rock_Code	SO	SO	Soil
	SP	SP	Saprolite
	RI	RI	Weathered Rock
	SCDX	SCDX	Sericite-chlorite-Ankerite Schists
	VQTZ	VQTZ	Quartz Vein
	SQCX	SQCX	Sericite-Quartz-Chlorite Schists
	QCCX	QCCX	Quartz-carbonate-chlorite Schists
	CQCX	CQCX	Carbonate-Quartz-Chlorite Schist
	CASQX	CASQX	Carbonate-Sericite-Quartz Schist
	CCX	CCX	Carbonate-Chlorite Schist
	QSX	QSX	Quartz-Sericite Schist
	CQSX	CQSX	Chlorite-Quartz-Sericite Schist
	CCSX	CCSX	Carbonate-Chlorite-Sericite Schist
	CQSCX	CQSCX	Chlorite-Quartz-Sericite-Carbonate Schist
	QCX	QCX	Quartz-Chlorite Schist
	SCX	SCX	Sericite-Chlorite Schist
	RSI	RSI	Semi Weathered Rock
	SX	SX	Sericite Schist

POSTED TEXT	L/R	TEXT	ITEMS
AU_PPM_Labels	R	All
Rock_Code	L	All

SECTION SPECS:

REF. PT. E, N	264382 m	8719760 m
EXTENTS	320.1 m	190.7 m
SECTION TOP, BOT	459.1 m	268.3 m
TOLERANCE +/-	20 m	



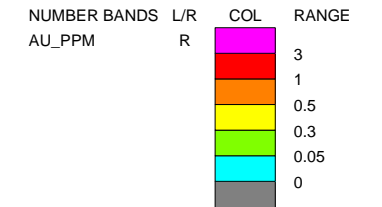
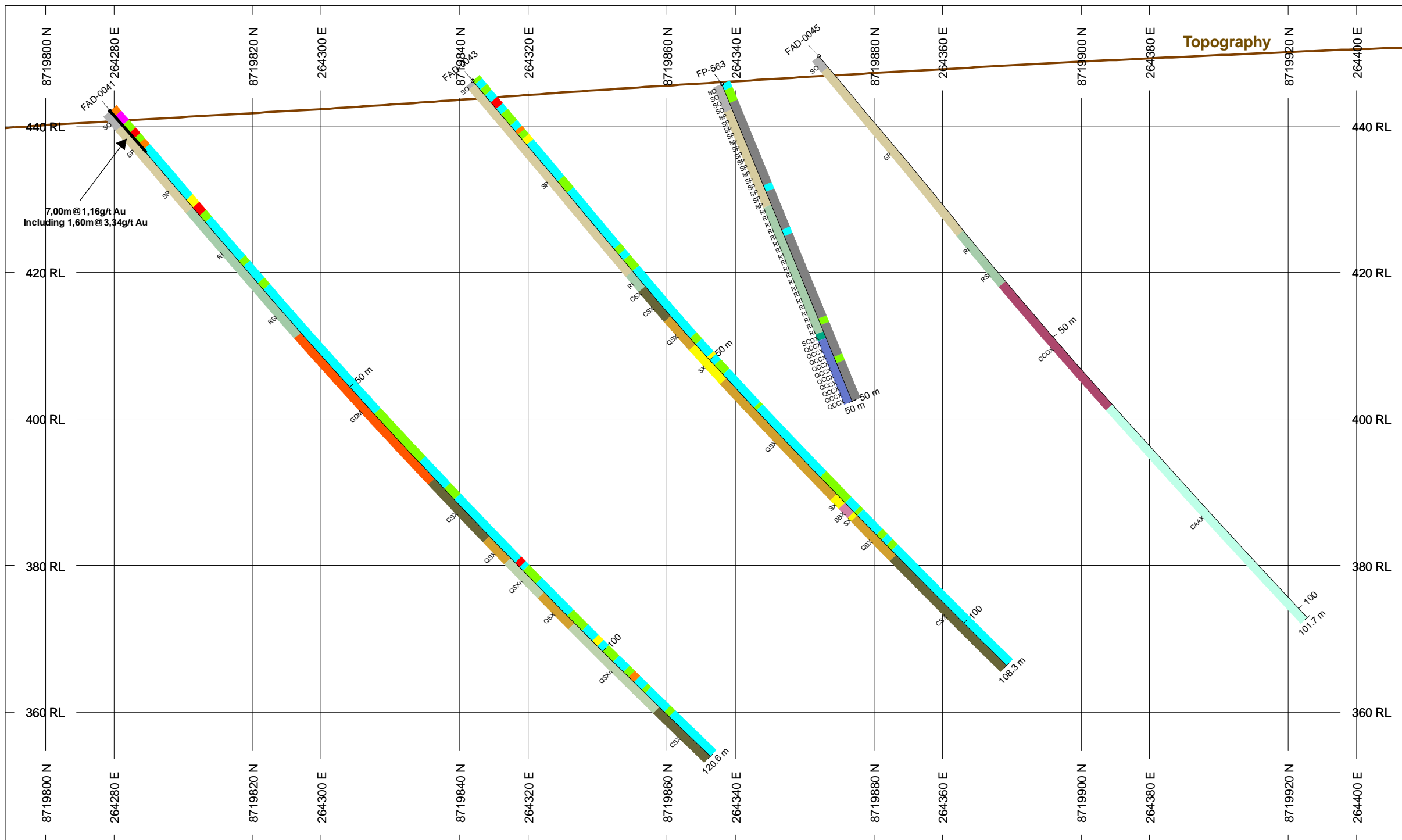


HOLES PLOTTED

TOTAL 4

FAD-0041 FAD-0043 FAD-0045 FP-563

**SECTION FAD-0041
ARROZ TARGET
ALMAS PROJECT**

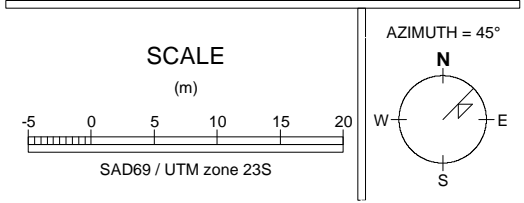


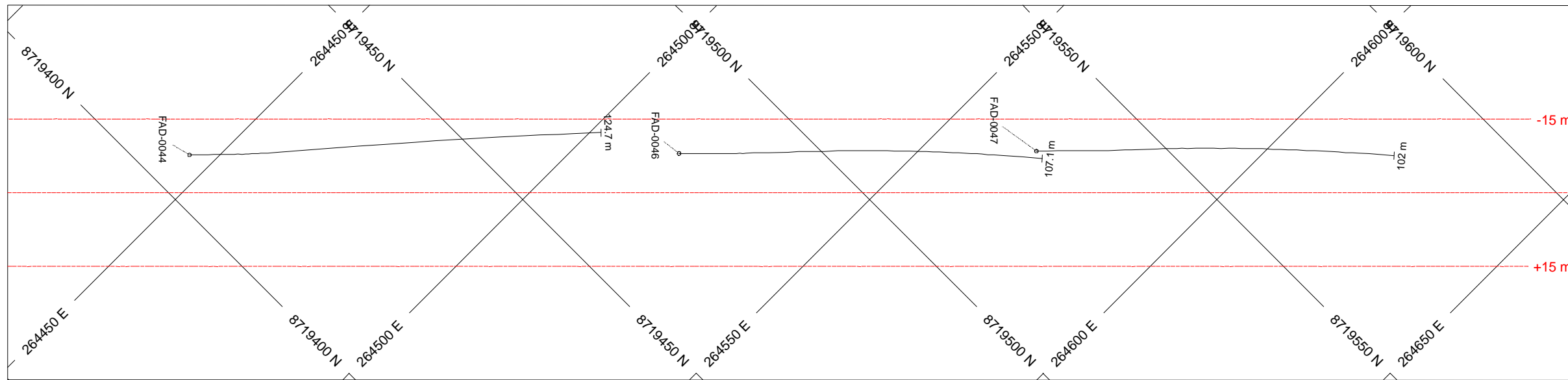
ROCK CODES	PAT	LABEL	DESCRIPTION
Rock_Code	SO	SO	Soil
	SP	SP	Saprolite
	RI	RI	Weathered Rock
	CAAX	CAAX	Chlorite-Albite-Amphibole Schists
	SCDX	SCDX	Sericite-chlorite-Ankerite Schists
	CCQX	CCQX	Calcite-Chlorite-Quartz Schist
	QCCX	QCCX	Quartz-carbonate-chlorite Schists
	QSX	QSX	Quartz-Sericite Schist
	SBX	SBX	Carbonaceous-Sericite Schist
	RSI	RSI	Semi Weathered Rock
	SX	SX	Sericite Schist
	CSX	CSX	Chlorite-Sericite Schist
	QSXn	QSXn	Quartz-Sericite Schist Nucleus
	GDM	GDM	Milonite Granodiorite

POSTED TEXT	L/R	TEXT	ITEMS
AU_PPM_Labels	R	-----	All
Rock_Code	L	-----	All

SECTION SPECS:

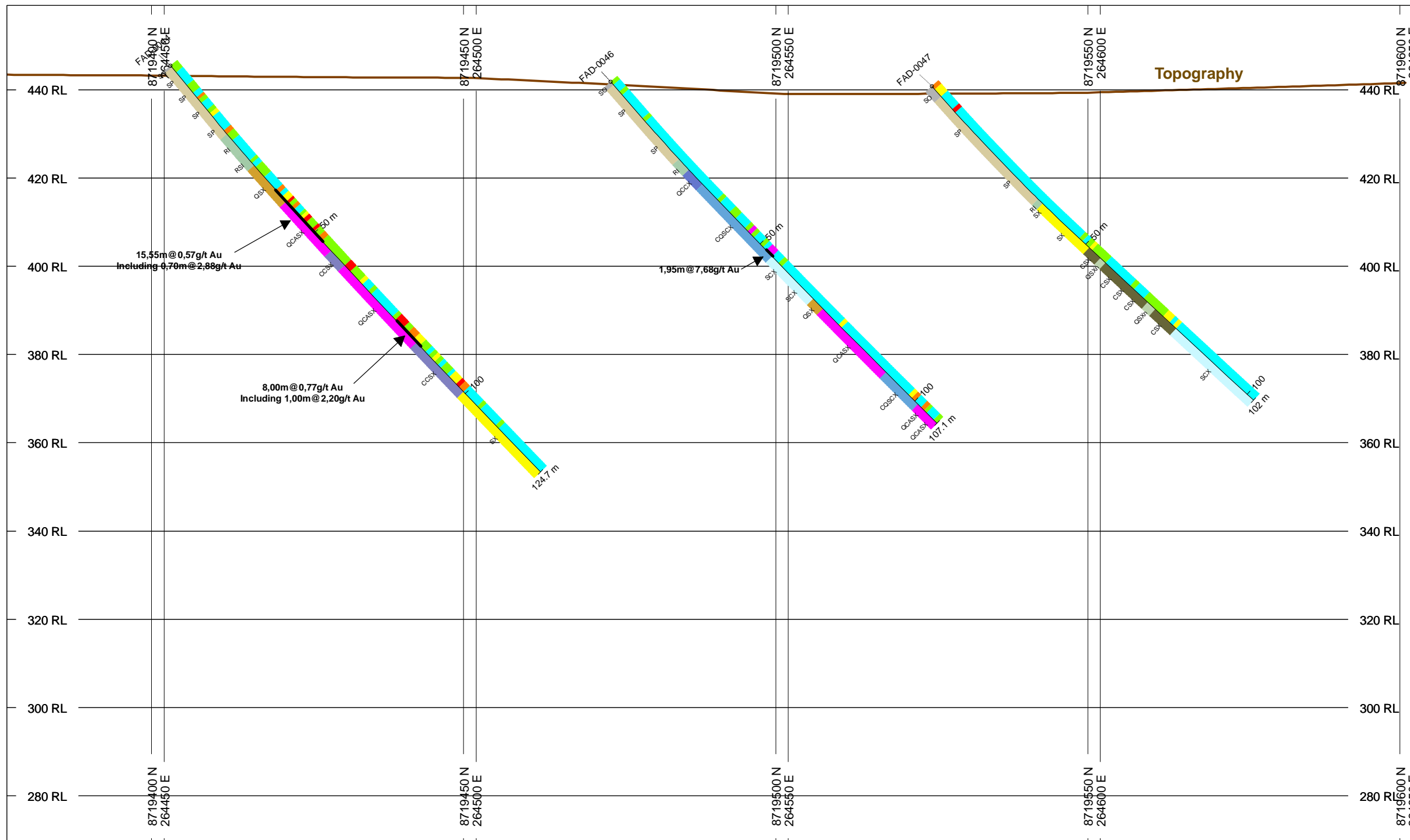
REF. PT. E, N	264337 m	8719864 m
EXTENTS	192.1 m	114.4 m
SECTION TOP, BOT	456.4 m	342 m
TOLERANCE +/-	12.5 m	





HOLES PLOTTED
 TOTAL 3
 FAD-0044 FAD-0046 FAD-0047

SECTION FAD-0044
ARROZ TARGET
ALMAS PROJECT



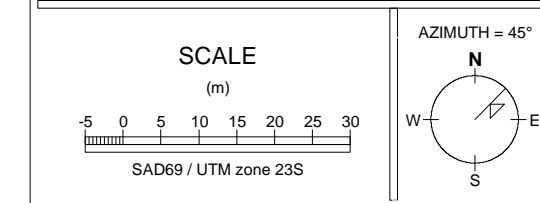
NUMBER BANDS	L/R	COL	RANGE
AU_PPM	R		3
			1
			0.5
			0.3
			0.05
			0

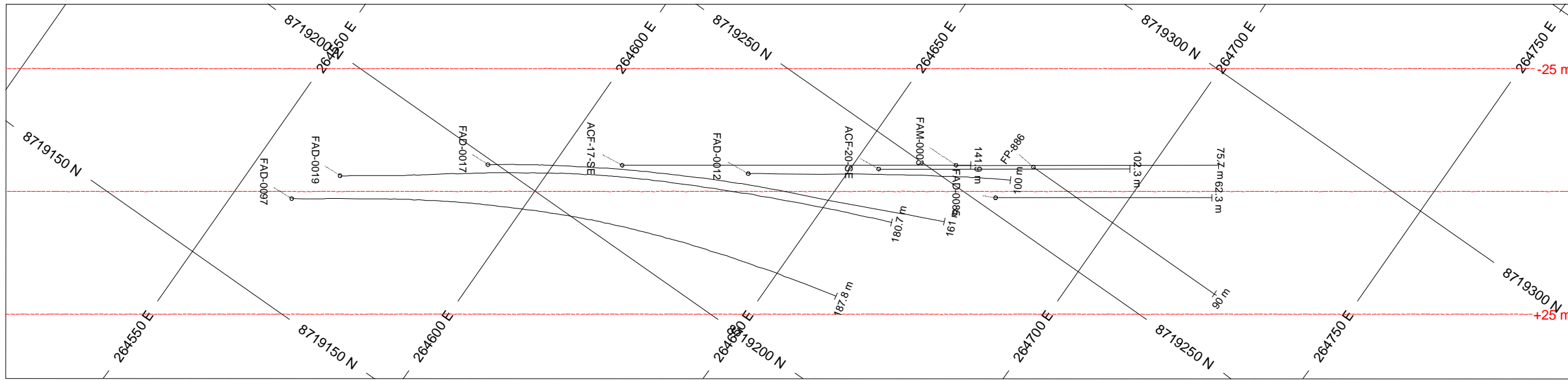
ROCK CODES	PAT	LABEL	DESCRIPTION
Rock_Code	SO	SO	Soil
	SP	SP	Saprolite
	RI	RI	Weathered Rock
	QCCX	QCCX	Quartz-carbonate-chlorite Schists
	QSX	QSX	Quartz-Sericite Schist
	CCSX	CCSX	Carbonate-Chlorite-Sericite Schist
	QCASX	QCASX	Quartz-Carbonate-Sericite Schist
	CQSCX	CQSCX	Chlorite-Quartz-Sericite-Carbonate Schist
	SCX	SCX	Sericite-Chlorite Schist
	RSI	RSI	Semi Weathered Rock
	SX	SX	Sericite Schist
	CSX	CSX	Chlorite-Sericite Schist
	QSXn	QSXn	Quartz-Sericite Schist Nucleus

POSTED TEXT	L/R	TEXT	ITEMS
AU_PPM_Labels	R	-----	All
Rock_Code	L	-----	All

SECTION SPECS:

REF. PT. E, N	264538 m	8719490 m
EXTENTS	320.1 m	190.7 m
SECTION TOP, BOT	459.1 m	268.3 m
TOLERANCE +/-	15 m	



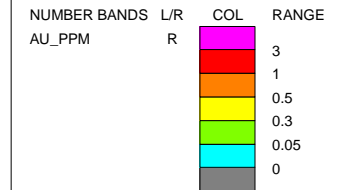


HOLES PLOTTED

TOTAL 9

ACF-17-SE ACF-20-SE FAD-0012 FAD-0017
 FAD-0019 FAD-0085 FAD-0097 FAM-0003
 FP-886

**SECTION FAD-0085
 ARROZ TARGET
 ALMAS PROJECT**

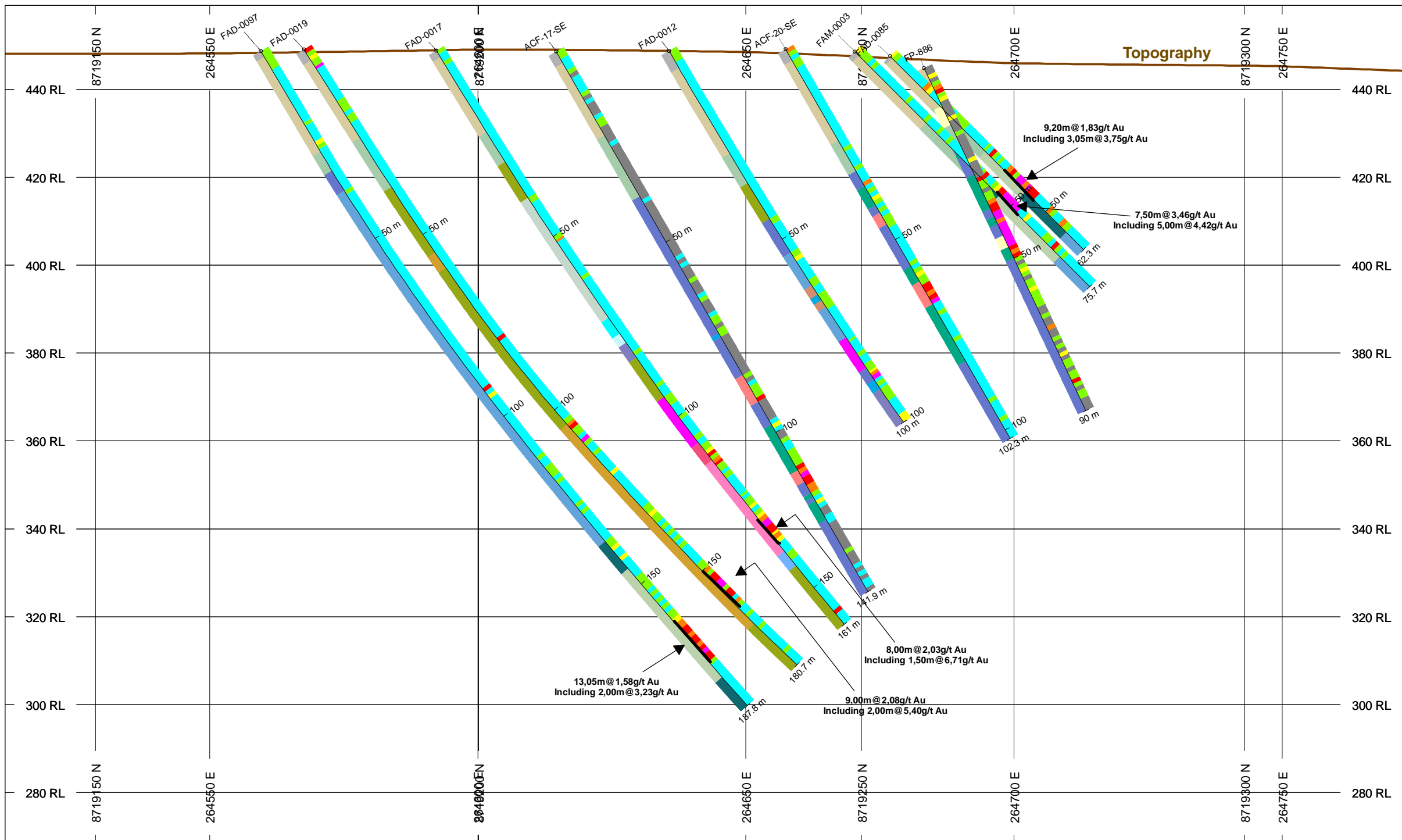
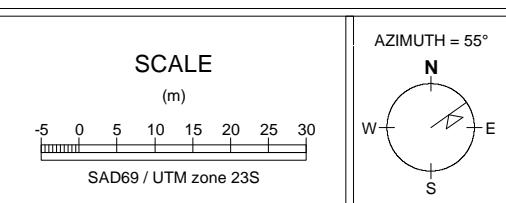


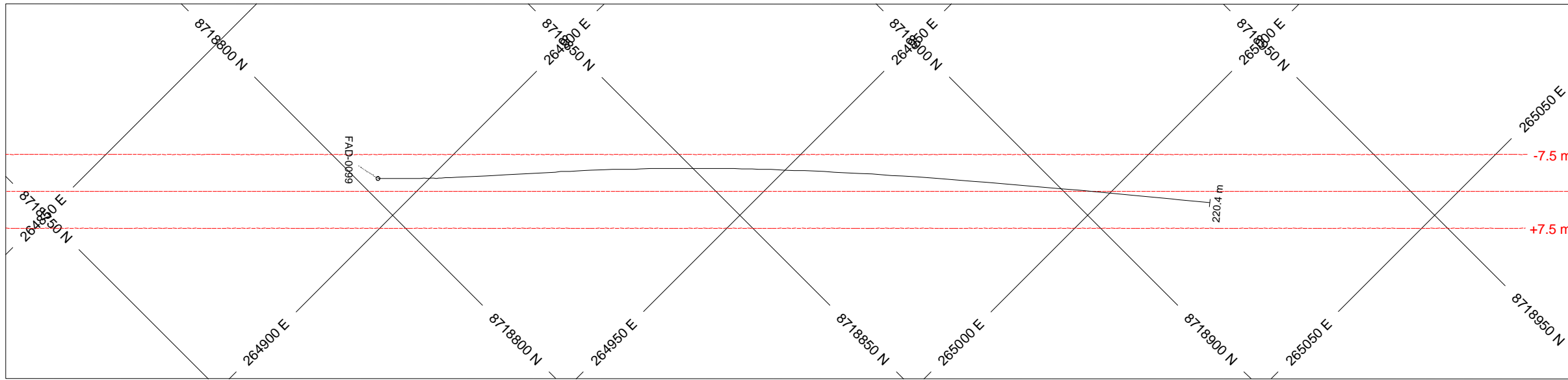
ROCK CODES	PAT	LABEL	DESCRIPTION
Rock_Code	SO	Soil	
	SP	Saprolite	
	RI	Weathered Rock	
	SCDX	Sericite-chlorite-Ankerite Schists	
	SDQX	Sericite-Ankerite-Quartz Schists	
	VQTZ	Quartz Vein	
	SQCX	Sericite-Quartz-Chlorite Schists	
	BQZ	Quartz Breccia	
	QCCX	Quartz-carbonate-chlorite Schists	
	CASQX	Carbonate-Sericite-Quartz Schist	
	QX	Quartz Schist	
	QSCX	Quartz-Sericite-Chlorite Schist	
	CCX	Carbonate-Chlorite Schist	
	QSX	Quartz-Sericite Schist	
	CQSX	Chlorite-Quartz-Sericite Schist	
	CCSX	Carbonate-Chlorite-Sericite Schist	
	QCASX	Chlorite-Quartz-Sericite-Carbonate Schist	
	CQSCX	Chlorite-Quartz-Sericite-Carbonate Schist	
	QCX	Quartz-Chlorite Schist	
	SCX	Sericite-Chlorite Schist	
	RSI	Semi Weathered Rock	
	CQSXp	Chlorite-Quartz-Sericite Schist Proximal	
	QSXn	Quartz-Sericite Schist Nucleus	

POSTED TEXT	L/R	TEXT	ITEMS
AU_PPM_Labels	R	-----	All
Rock_Code	L	-----	All

SECTION SPECS:

REF. PT. E, N	264643 m	8719230 m
EXTENTS	320.1 m	190.7 m
SECTION TOP, BOT	459.1 m	268.3 m
TOLERANCE +/-	25 m	

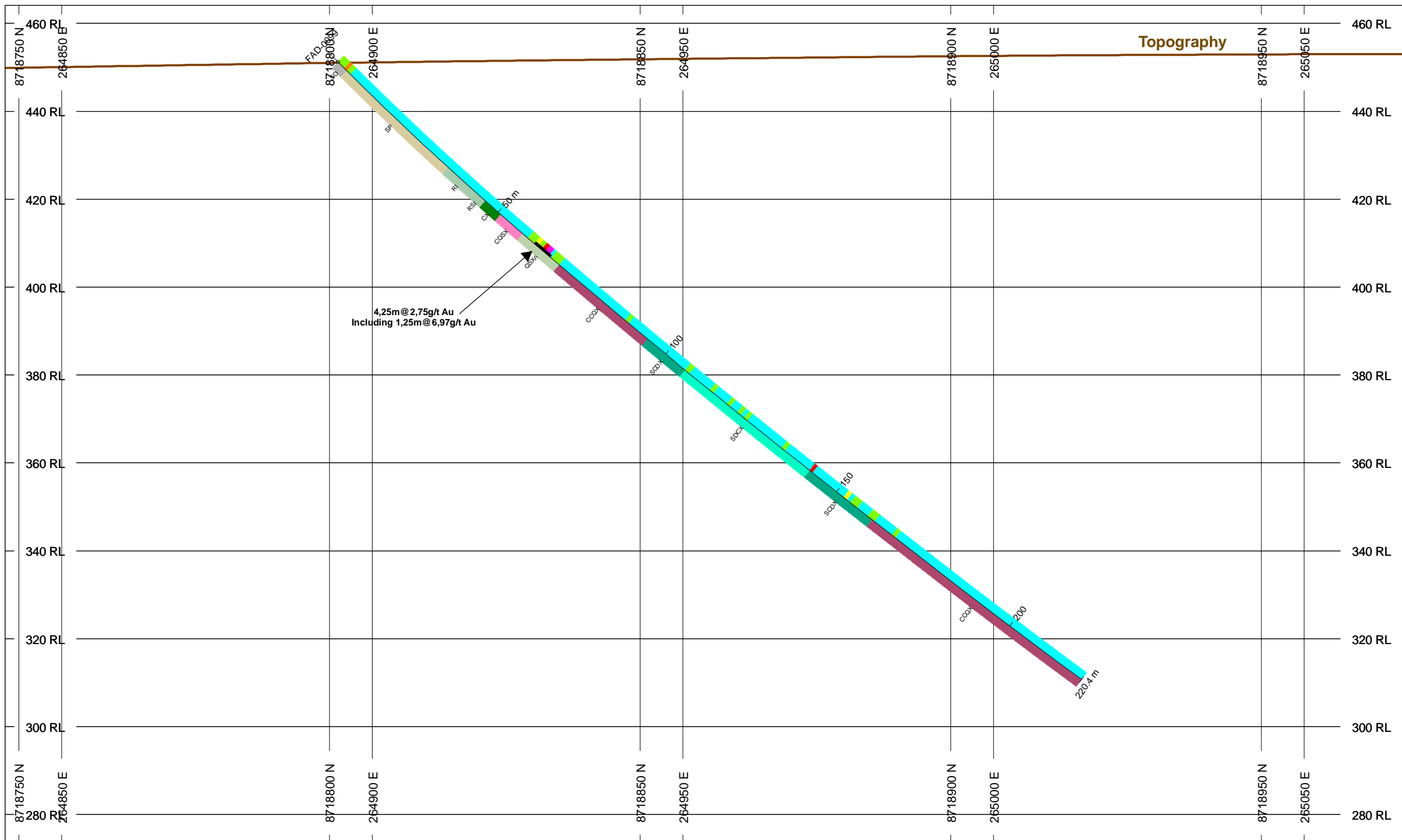




HOLES PLOTTED

TOTAL 1
FAD-0099

**SECTION FAD-0099
ARROZ TARGET
ALMAS PROJECT**



NUMBER BANDS	L/R	COL	RANGE
AU_PPM	R		
			3
			1
			0.5
			0.3
			0.05
			0

ROCK CODES	PAT	LABEL	DESCRIPTION
Rock_Code		SO	Soil
		SP	Saprolite
		RI	Weathered Rock
		SDCX	Sericite-ankerite-chlorite Schists
		SCDX	Sericite-chlorite-Ankerite Schists
		CCQX	Calcite-Chlorite-Quartz Schist
		CQSX	Chlorite-Quartz-Sericite Schist
		CX	Chlorite Schist
		RSI	Semi Weathered Rock
		QSXn	Quartz-Sericite Schist Nucleus

POSTED TEXT	L/R	TEXT	ITEMS
AU_PPM_Labels	R	-----	All
Rock_Code	L	-----	All

SECTION SPECS:

REF. PT. E, N	264954 m	8718861 m
EXTENTS	320.1 m	190.7 m
SECTION TOP, BOT	464.1 m	273.3 m
TOLERANCE +/-	7.5 m	

