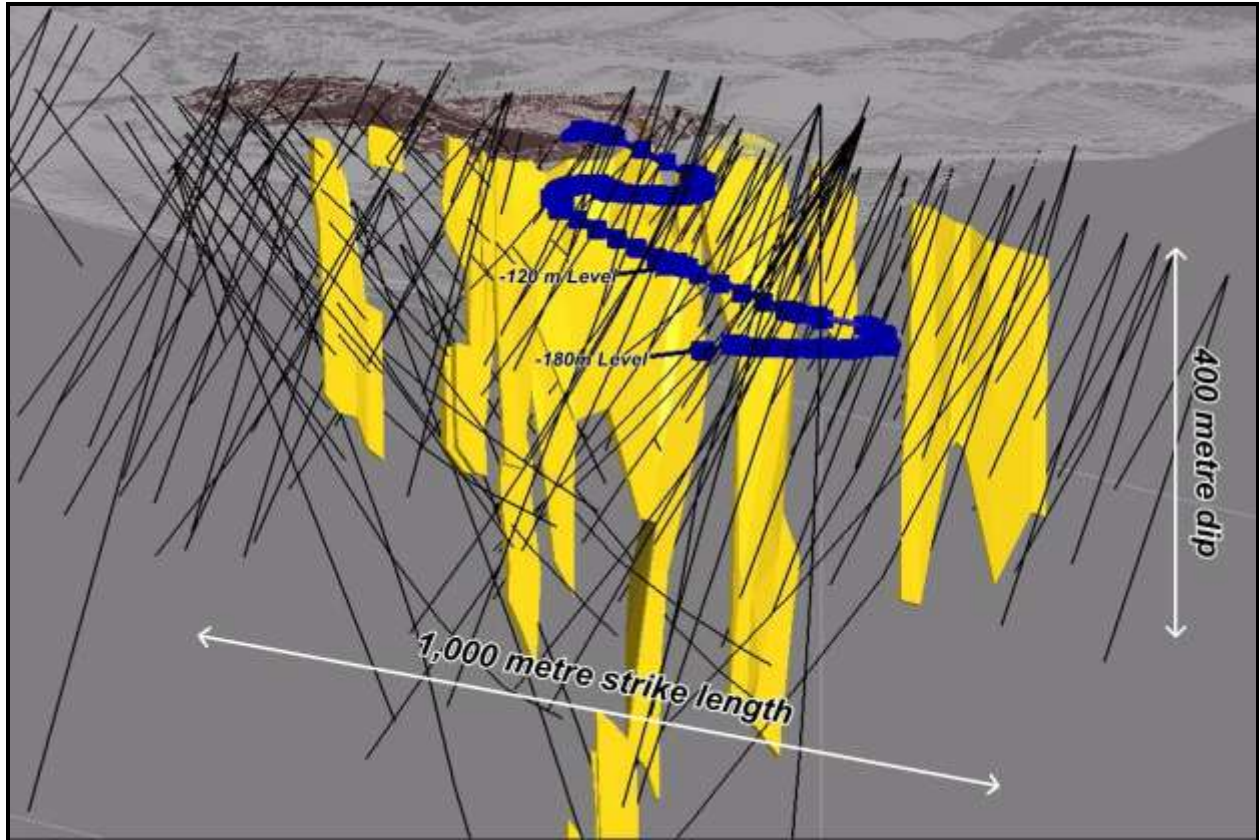


*Kubi Main Zone Assay Long Section Looking Azimuth 290 deg – 2m composite assays – contour interval 5.0 g/t Au*



*3D View from under pit looking NW towards the surface showing drill holes, proposed decline and SEMS wire frames of near vertical Kubi Main Zone mineralization (avg. true width 2.1m)*



*Location Map – Kubi Mine JV Gyimigya & Fahiakoba concessions on geology base (light brown Birimian meta sediments; dark green Birimian meta volcanics; blue Tarkwaian meta sediments)*