

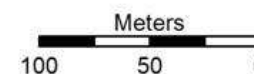


BELLHAVEN
COPPER & GOLD INC.

Geological Map El Limon Deposit

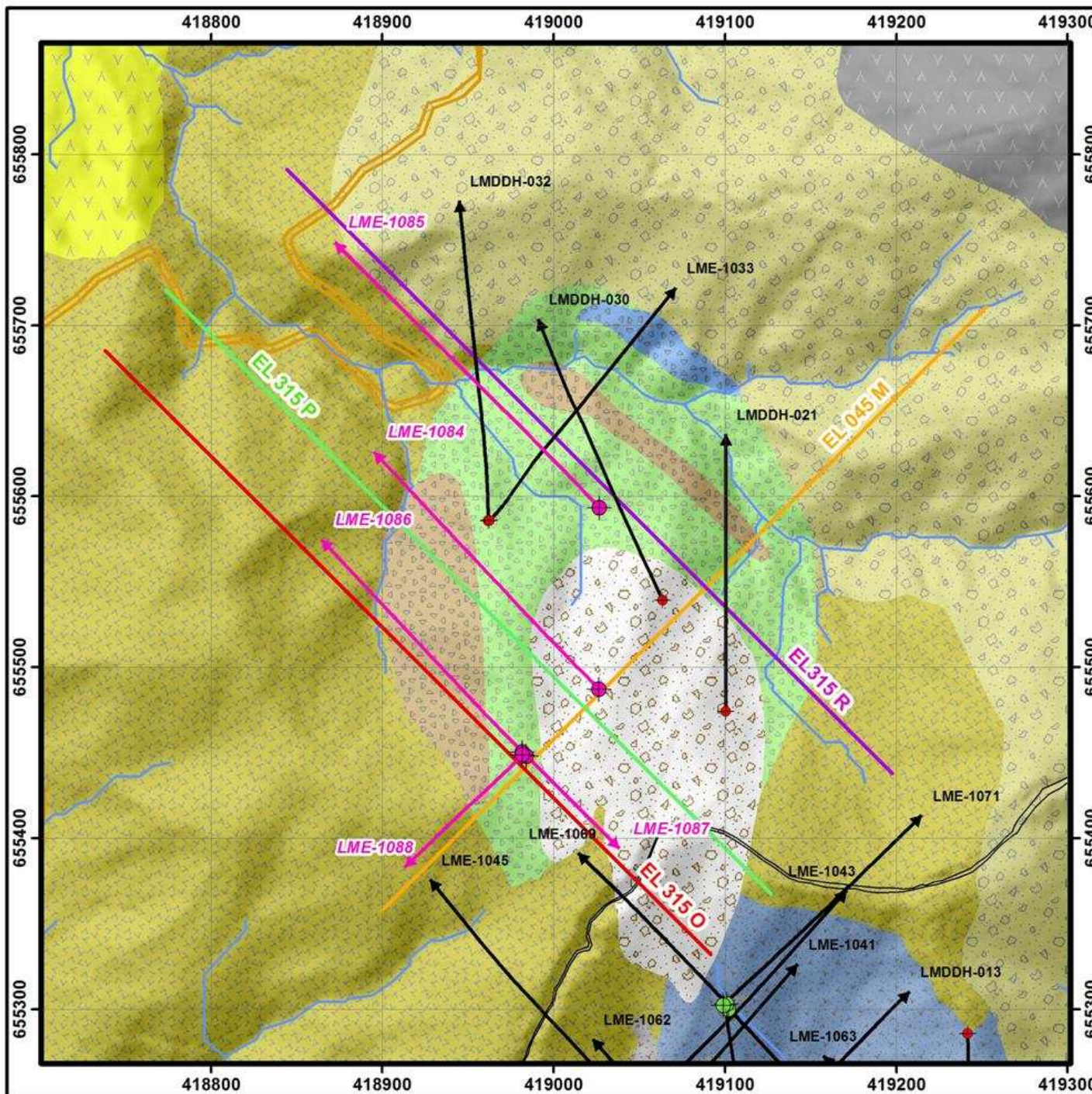


Projection UTM 18N,
Datum WGS84



Legend

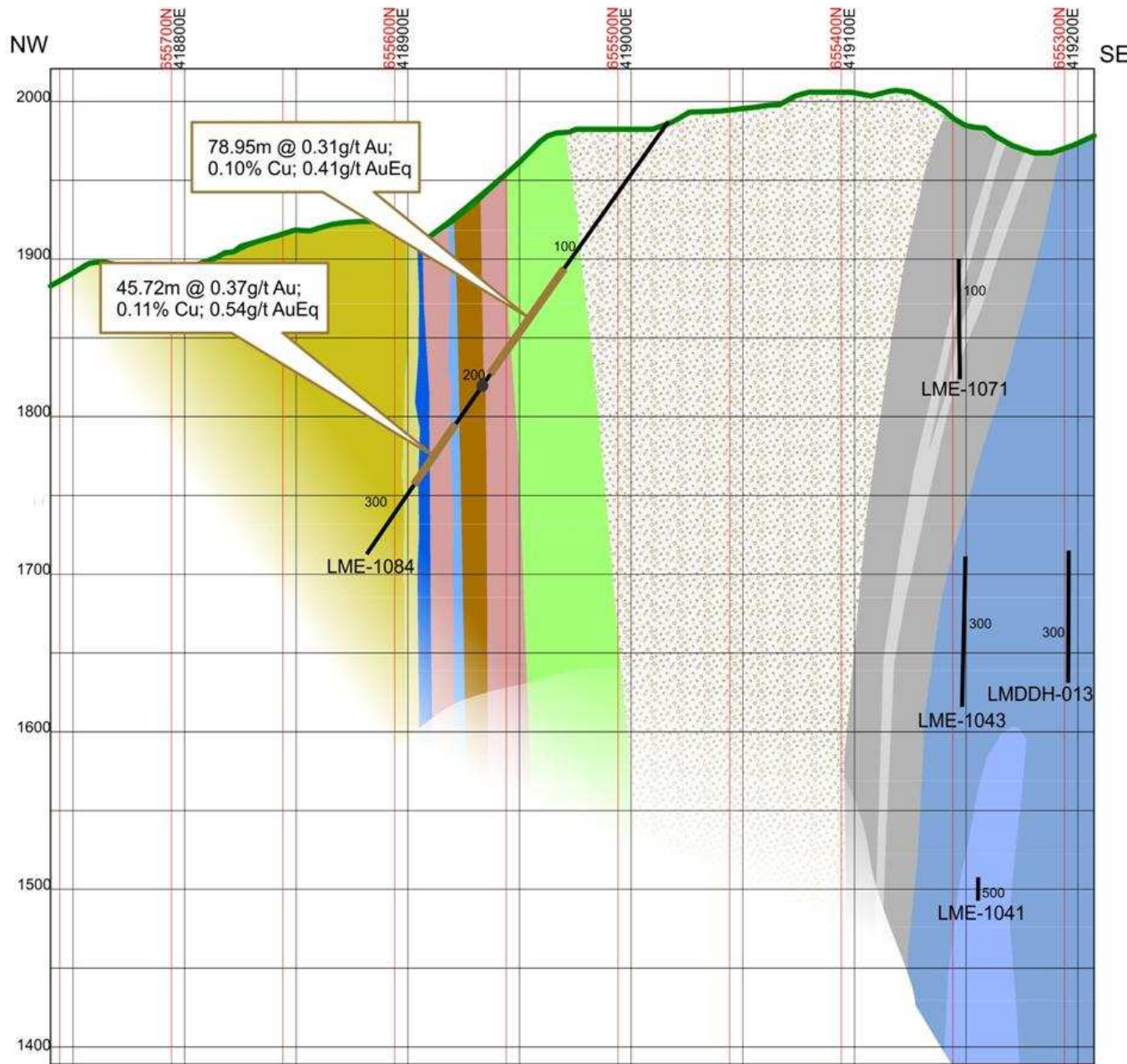
- | | |
|------------------|------------------|
| Bellhaven (2010) | Type |
| Bellhaven (2011) | Volcanic Breccia |
| Bellhaven (2012) | X1 Porphyry |
| Bellhaven (PRs) | X3 Porphyry |
| Traces | L4 Breccia |
| Traces (PRs) | L3 Breccia |
| EL 045 M | L2 Breccia |
| EL 315 O | L1 Breccia |
| EL 315 P | L1 Porphyry |
| EL 315 R | Lithic Tuff |
| Creek | Basalt |
| Path | |
| Trail | |





BELLHAVEN
COPPER & GOLD INC.

Middle Zone Section EL 315 P Lithology & Significant Drill Hole Intercepts



- Volcanic Breccia
- X1 Breccia
- X1 Porphyry
- X3 Breccia
- X3 Porphyry
- L4 Breccia
- L4 Porphyry
- L3 Breccia
- L3 Porphyry
- L2 Breccia
- L2 Porphyry
- L1 Breccia
- L1 Porphyry
- 0.40-0.75 g/t AuEq
- 0.75-1.10 g/t AuEq
- >1.10 g/t AuEq
- High-Grade Silver Vein

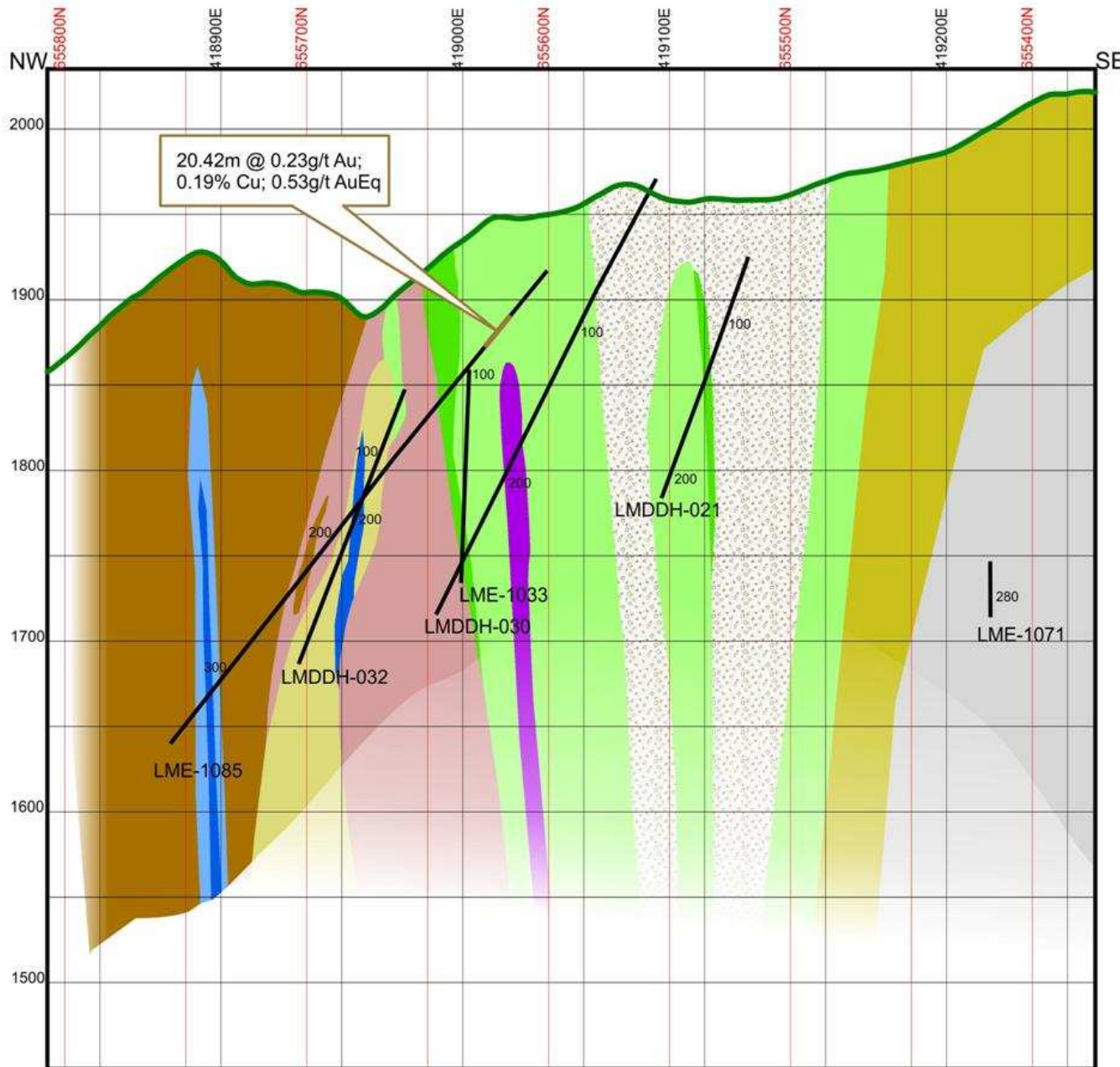
Looking to NE





BELLHAVEN
COPPER & GOLD INC.

Middle Zone Section EL 315 R Lithology & Significant Drill Hole Intercepts



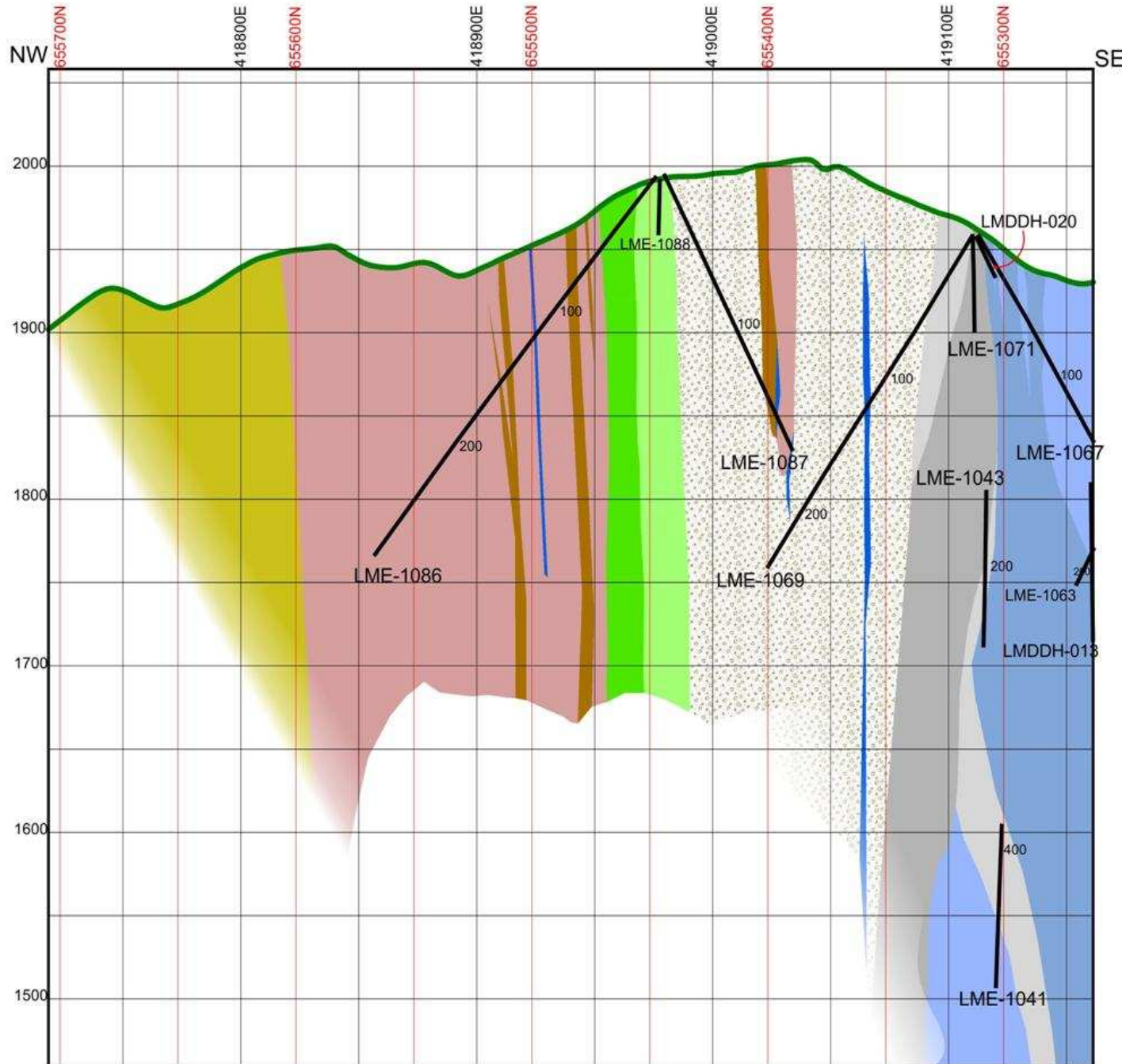
- Volcanic Breccia
- X1 Breccia
- X3 Breccia
- X3 Porphyry
- L5 Porphyry
- L4 Breccia
- L4 Porphyry
- L3 Breccia
- L3 Porphyry
- L2 Breccia
- L2 Porphyry
- L1 Breccia
- L1 Porphyry
- 0.40-0.75 g/t AuEq
- 0.75-1.10 g/t AuEq
- >1.10 g/t AuEq
- High-Grade Silver Vein

Looking to NE
0m 100m 200m



BELLHAVEN
COPPER & GOLD INC.

Middle Zone Section EL 315 O Lithology & Significant Drill Hole Intercepts



- Volcanic Breccia
- X1 Breccia
- X1 Porphyry
- X3 Breccia
- X3 Porphyry
- L4 Prophyry
- L3 Breccia
- L3 Porphyry
- L2 Breccia
- L2 Porphyry
- L1 Porphyry
- 0.40-0.75 g/t AuEq
- 0.75-1.10 g/t AuEq
- >1.10 g/t AuEq
- High-Grade Silver Vein

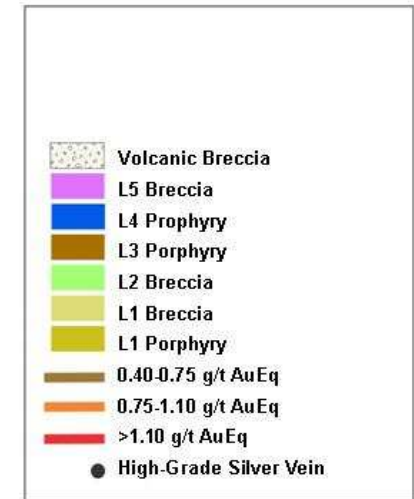
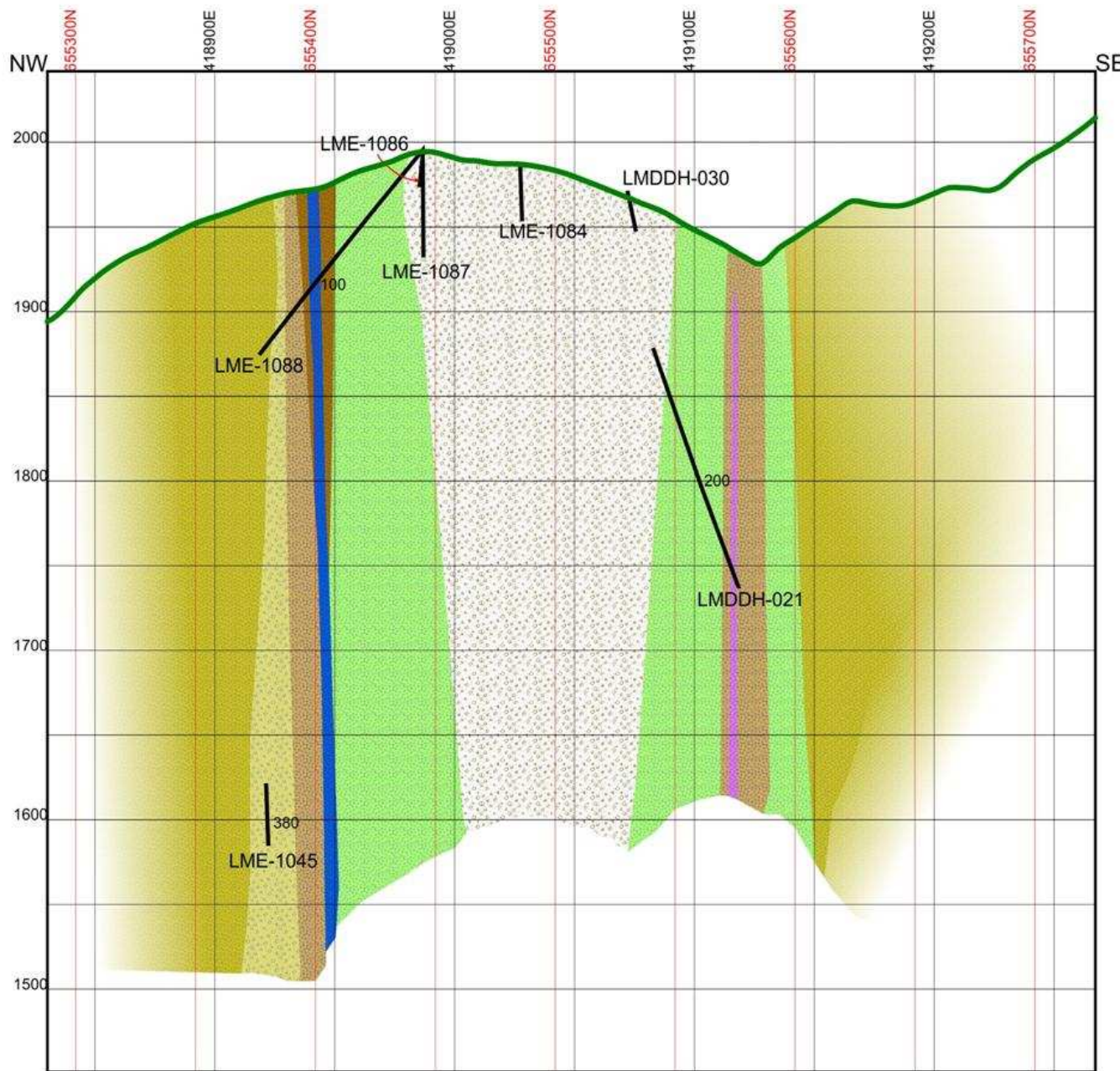
Looking to NE





BELLHAVEN
COPPER & GOLD INC.

Middle Zone Section EL 045 M Lithology & Significant Drill Hole Intercepts



Looking to NE



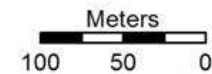


BELLHAVEN
COPPER & GOLD INC.

Geological Map Middle Zone Deposit

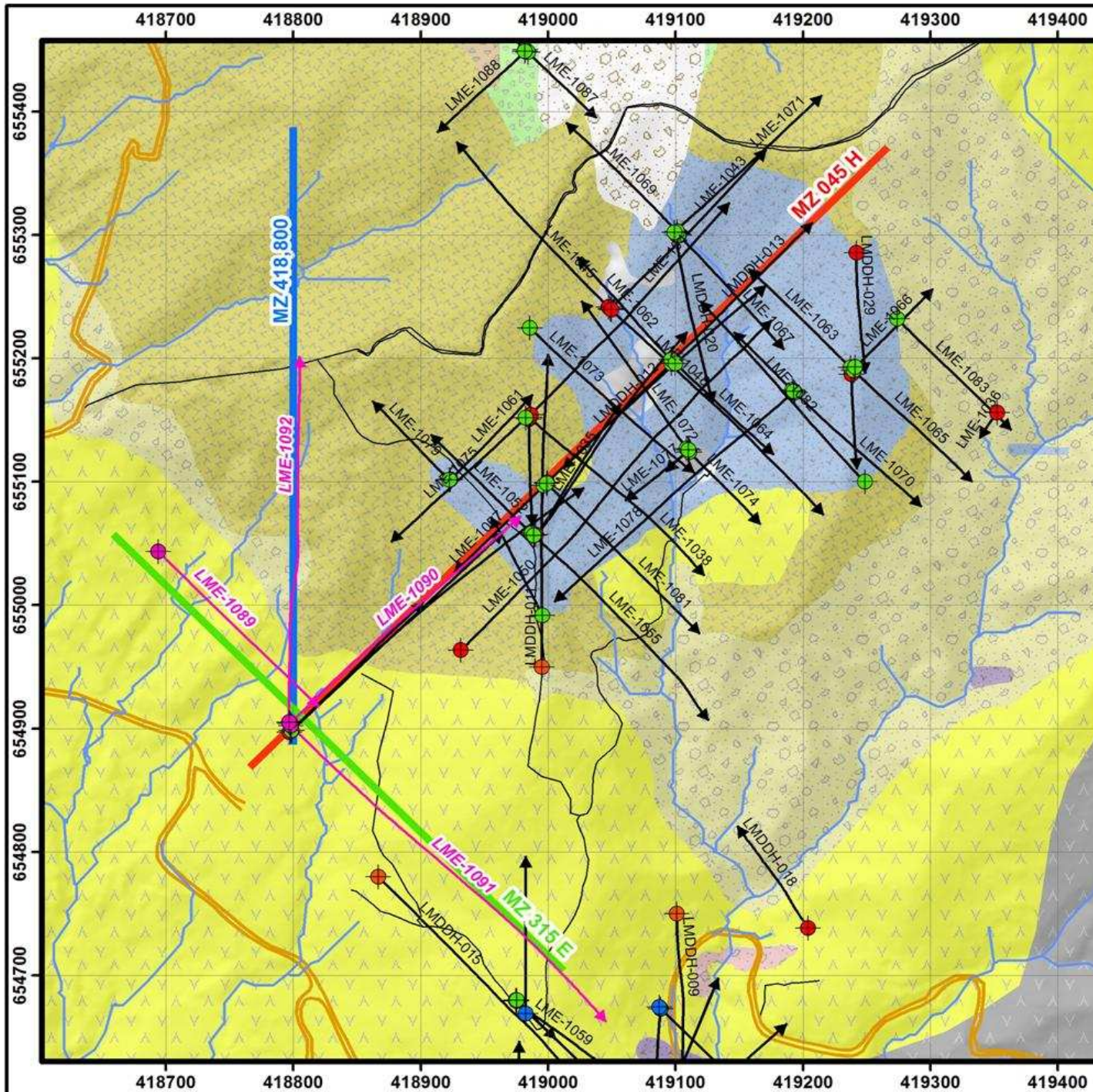


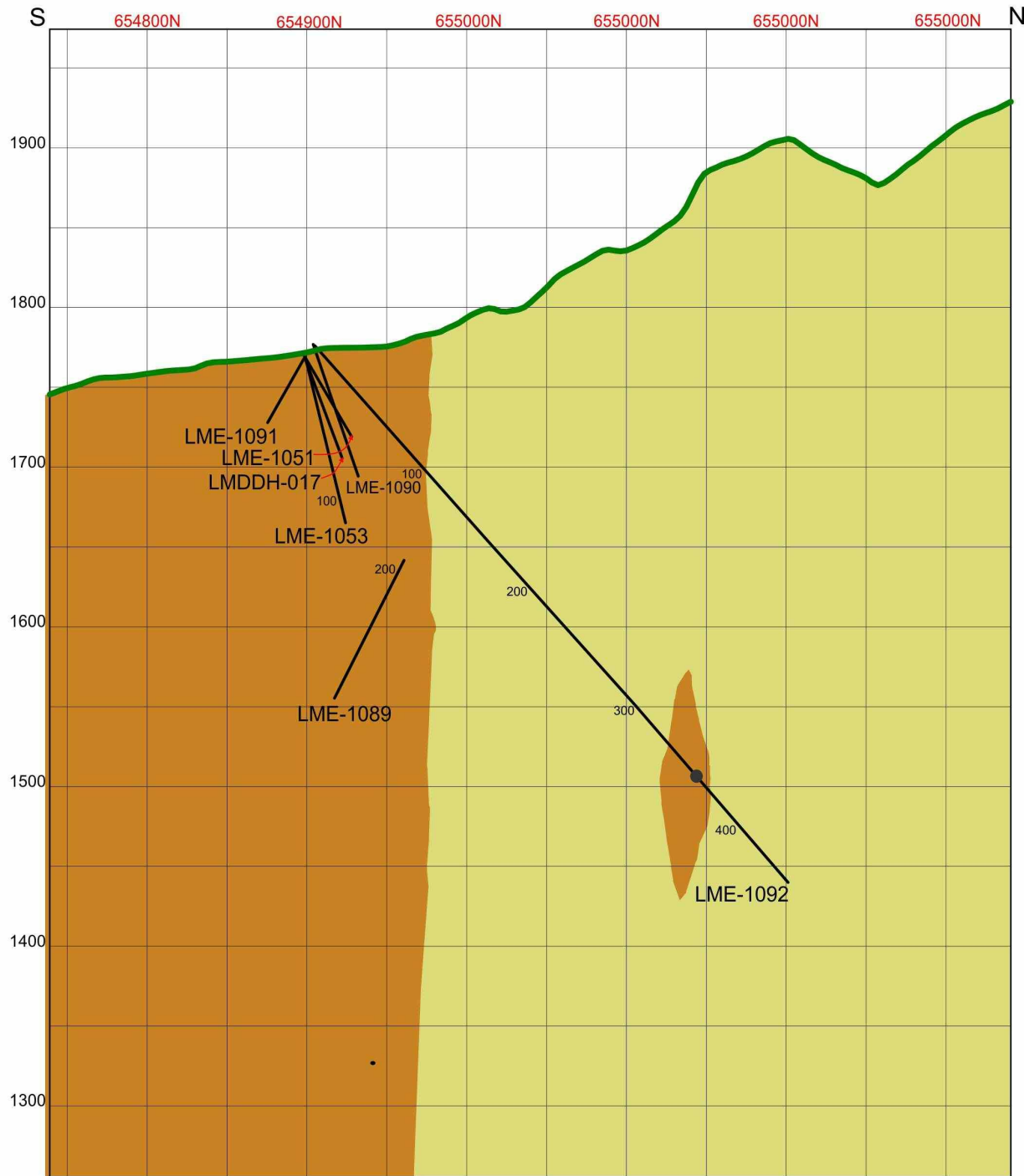
Projection UTM 18N,
Datum WGS84



Legend

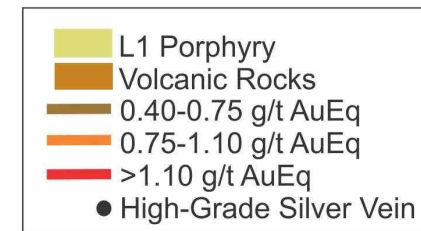
Hole	Type
Drill Traces	Volcanic Breccia
Drill Traces (PRs)	X2 Porphyry
Section 045°	X1 Breccia
Section 315°	C1 Breccia
Section 000°	X3 Porphyry
Creek	L3 Breccia
Path	L2 Breccia
Trail	L1 Breccia
	L1 Porphyry
	Lithic Tuff
	Basalt





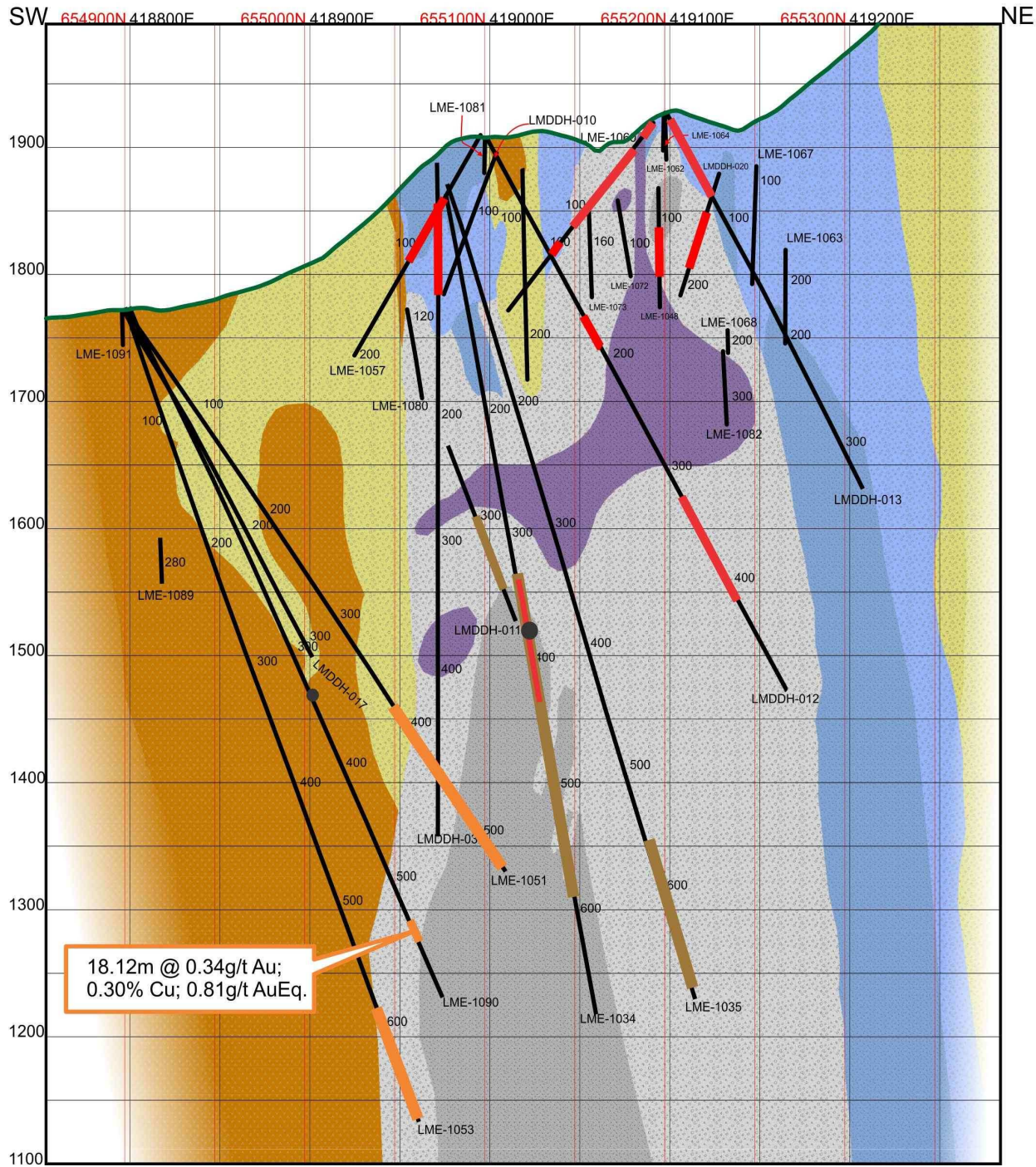
BELLHAVEN
COPPER & GOLD INC.

Middle Zone Section MZ E418800 Lithology & Significant Drill Hole Intercepts



Looking to W





BELLHAVEN
COPPER & GOLD INC.

Middle Zone Section MZ 045 H Lithology & Significant Drill Hole Intercepts

- X2 Porphyry
- X1 Breccia
- X1 Porphyry
- X3 Breccia
- X3 Porphyry
- L1 Porphyry
- Volcanic Rocks
- 0.40-0.75 g/t AuEq
- 0.75-1.10 g/t AuEq
- >1.10 g/t AuEq
- High-Grade Silver Vein

18.12m @ 0.34g/t Au;
0.30% Cu; 0.81g/t AuEq.

