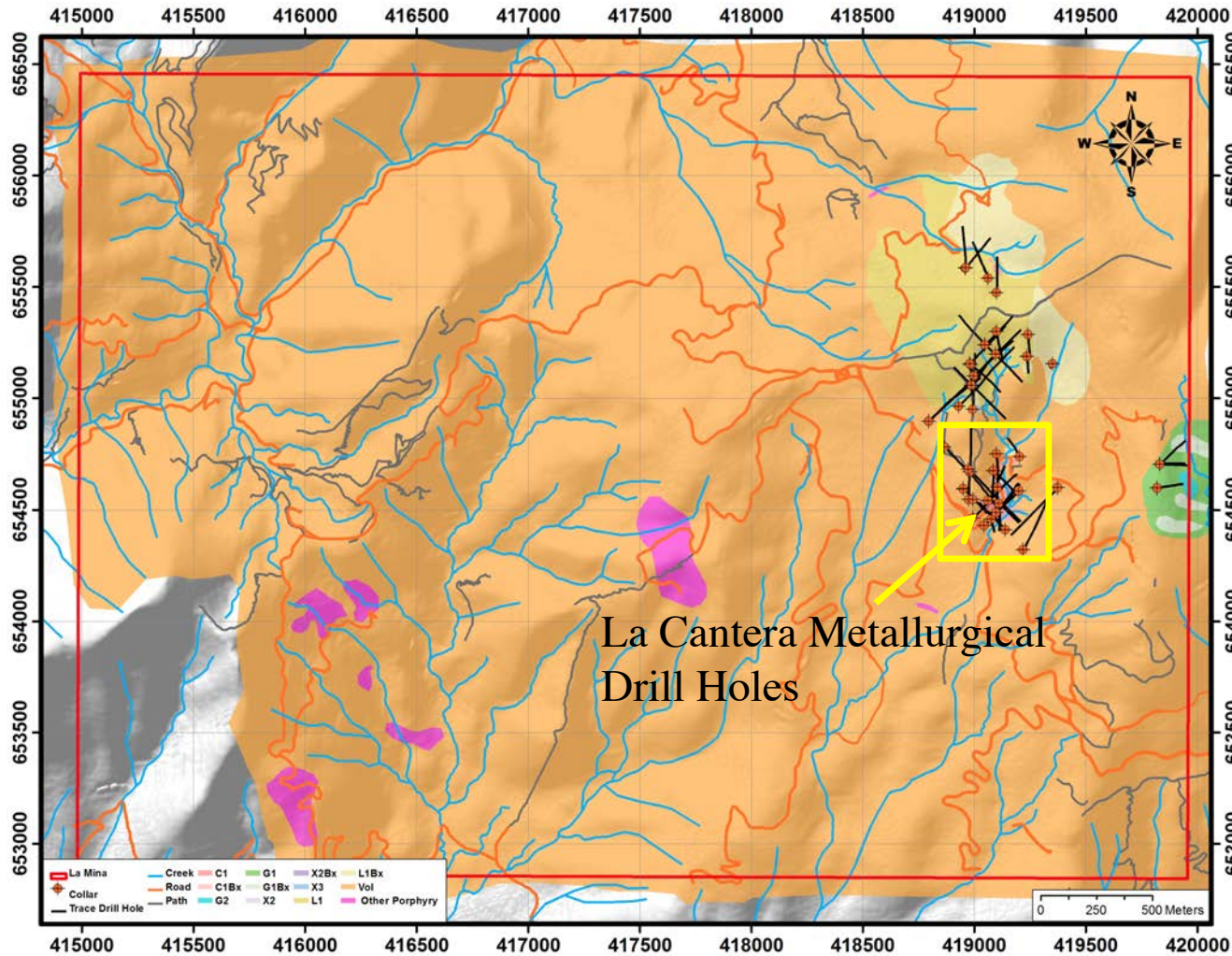




La Mina - Location & Geology

BELLHAVEN

Results Announced April 19, 2012

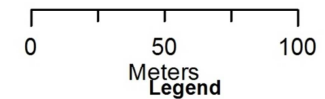
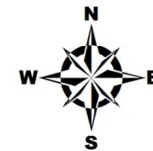


- La Cantera Deposit
- ~500m South of Middle Zone Deposit
- Two Metallurgical Drill Holes



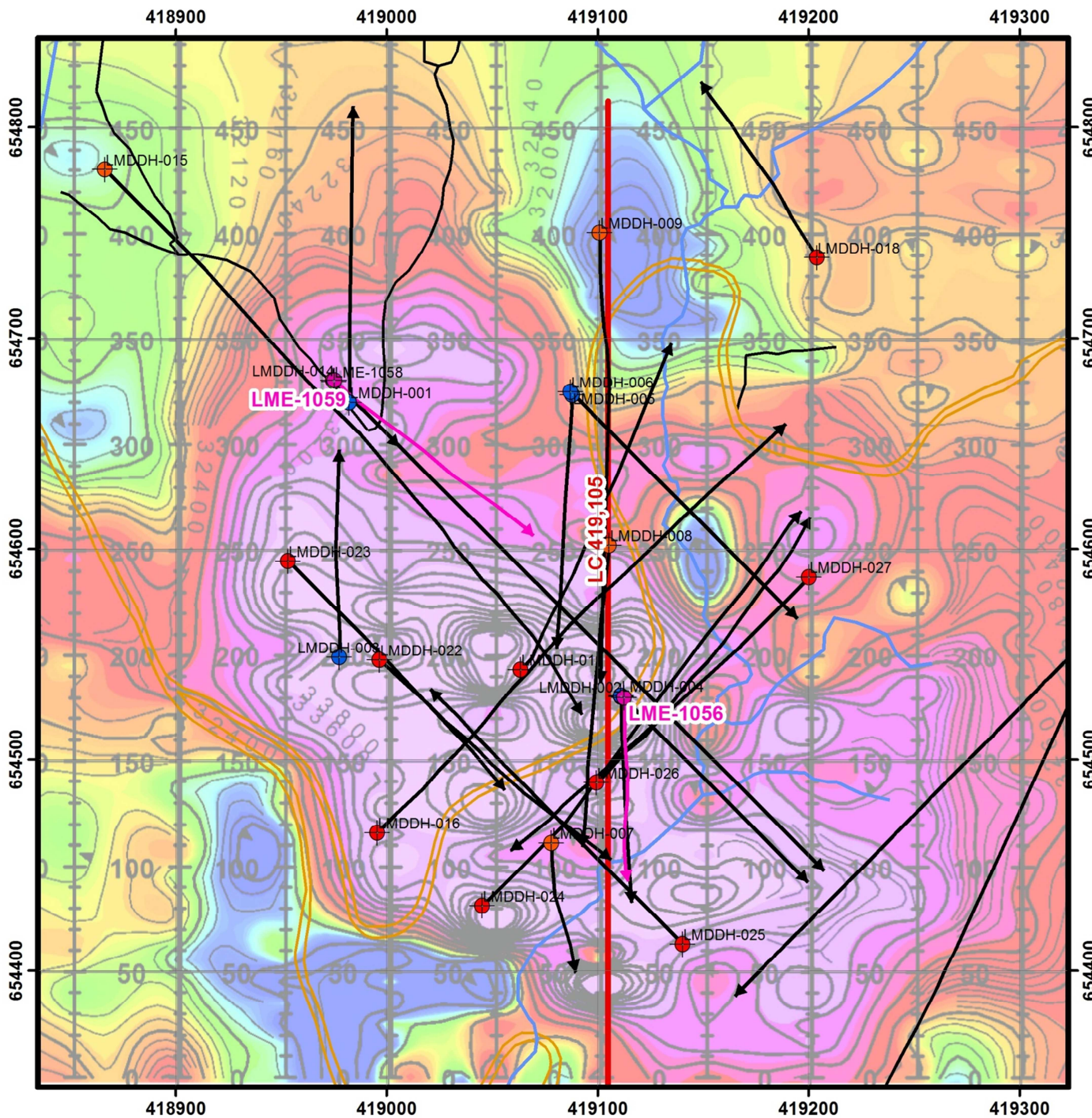
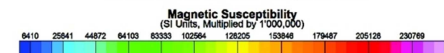
BELLHAVEN
Copper & Gold Inc

La Cantera Prospect



- Anglo Gold (2006)
- Bellhaven (2010)
- Bellhaven (2011)
- Bellhaven (2012)
- Metallurgical (2012)
- Drill Hole Trace
- Metallurgical Drill Trace
- LC E419,105 Section
- Creek
- Road
- Path

Total Field Magnetic Intensity
Reduced to the Pole



S

N

654,400mN

654,450mN

654,500mN

654,550mN

1,800mRL

1,800mRL

1,750mRL

1,750mRL

1,700mRL

1,700mRL

1,650mRL

1,650mRL

1,600mRL

1,600mRL

1,550mRL

1,550mRL

LME-1056
 118.00m @ 1.00g/t Au;
 0.32% Cu; 1.54g/t AuEq

LMDDH-002
 120.00m @ 0.96g/t Au;
 0.31% Cu; 1.48g/t AuEq

EOH LME-1056

EOH LMDDH-002



BELLHAVEN
 COPPER & GOLD INC.

**La Cantera
 Twinned Metallurgical
 Drill Holes
 LMDDH-002 & LME-1056**

Looking to W



654,450mN

654,500mN

654,550mN

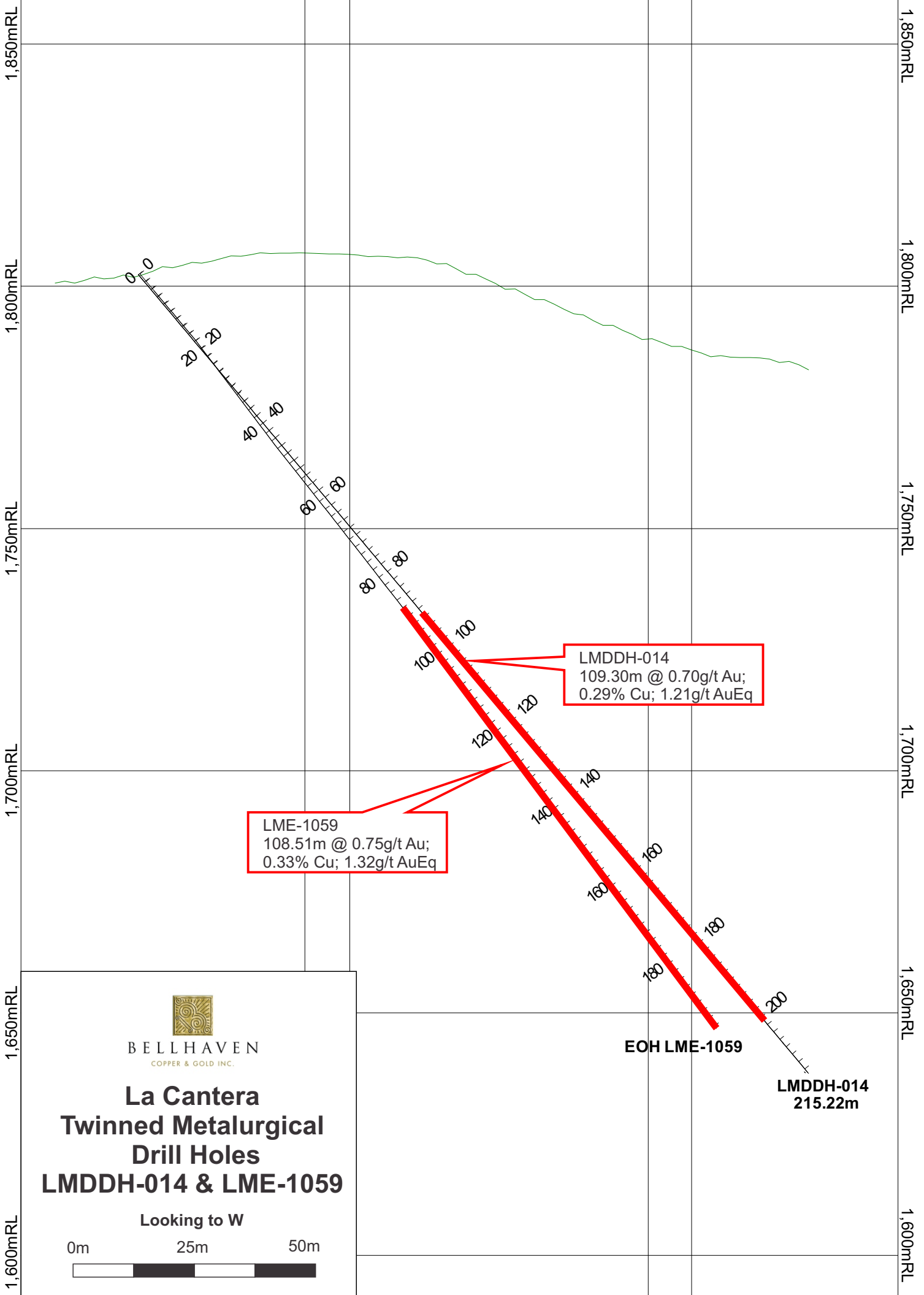
NW

SE

654,700mN

419,000mE 654,650mN

419,050mE 654,600mN



BELLHAVEN
COPPER & GOLD INC.

**La Cantera
Twinned Metallurgical
Drill Holes
LMDDH-014 & LME-1059**

Looking to W

0m 25m 50m



419,000mE 654,650mN

419,050mE 654,600mN

1,850mRL
1,800mRL
1,750mRL
1,700mRL
1,650mRL
1,600mRL

1,850mRL
1,800mRL
1,750mRL
1,700mRL
1,650mRL
1,600mRL