

Figure 2



Buena Vista – Meagher Zone, southwestern portion of the Lewis Property, showing north-trending and west-dipping fault zones. These high-grade Au-Ag structures (yellow dashed lines) extend to the south across the claim boundary (black dashed line, Newmont / BMG) into the Fortitude open-pit. Maximum rock-chip assay values for these areas include 24.7 g/t Au and 359 g/t Ag for the Buena Vista and 12.3 g/t Au and 5600 g/t Ag for the Meagher. The same favorable rock units that host the Fortitude deposit lie about 100 to 250 m below surface in the Lewis claim area. Photograph taken looking south-southeast.

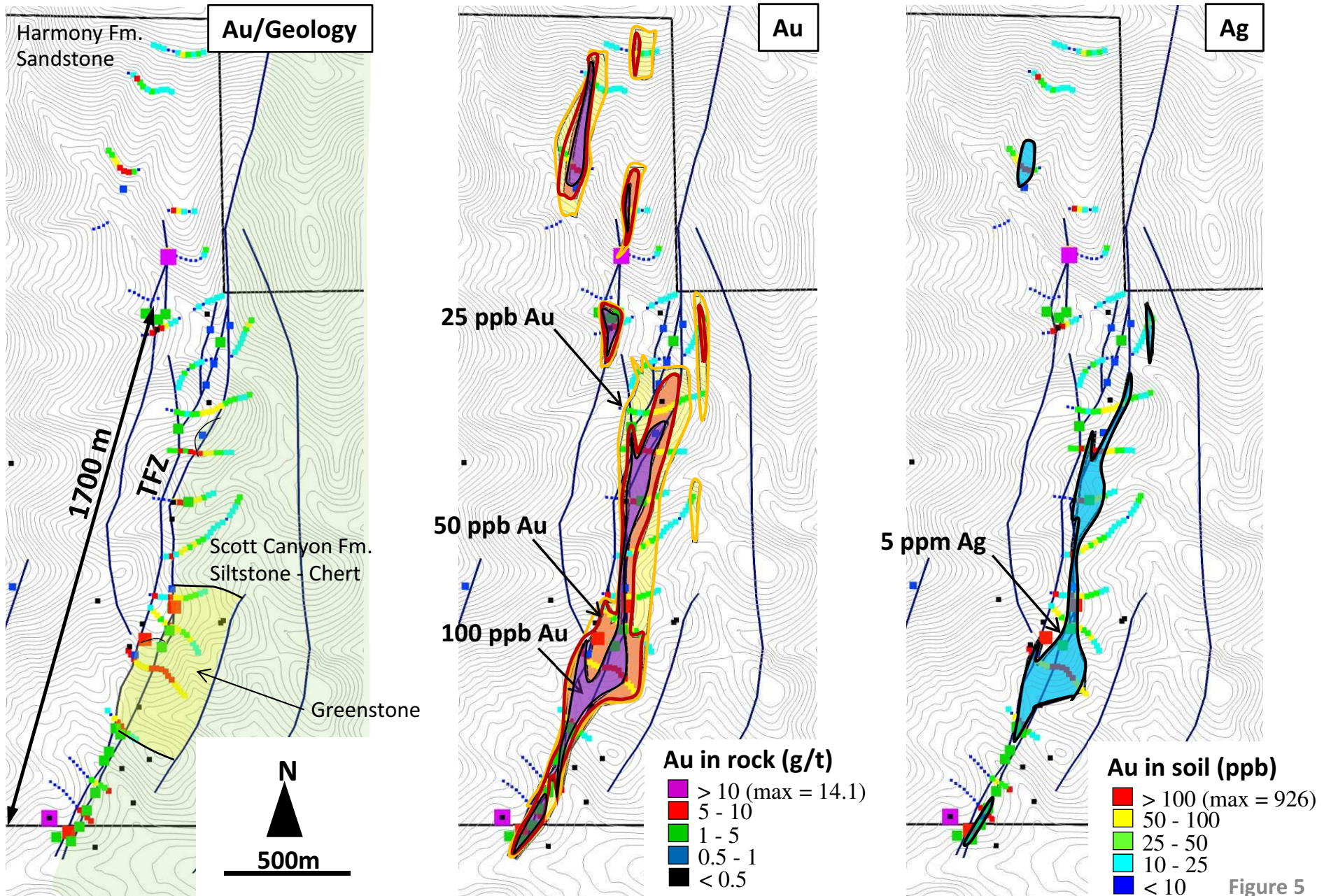


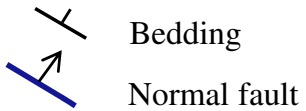
Figure 5



Interpreted Geology and Faults, Virgin Zone

Based on re-logged diamond drill-holes and re-mapped surface geology

Geological Explanation as for previous figures



Drill-hole Formations

- Granodiorite (Tg)
- Pumpernickle Fm (Pp)
- Edna Mountain Fm (Pem)
- Antler Peak Fm (Pap)
- Battle Fm (Pb)
- Harmony Fm (Ch)

Historic Results (g/t) from Re-logged Drill Holes

- 83** – 21m @ 6.9 Au, 64 Ag from 76 m
- 86** – 2m @ 8.3 Au, 61 Ag from 32 m
- 90** – 1m @ 11.7 Au, 89 Ag from 170 m

New Au and Ag results (g/t) *:

- 83** – 158 Au, 437 Ag (79.9 - 80.5 m)
- 90** – 10.6 Au, 56 Ag (170.1 - 170.7 m)
- 147** – 11.1 Au, 20 Ag (165.5 - 166.4 m)
- 137** – 7.4 Au, 34 Ag (149.0 - 149.4 m)

* - from grab samples of stated drill-core intervals

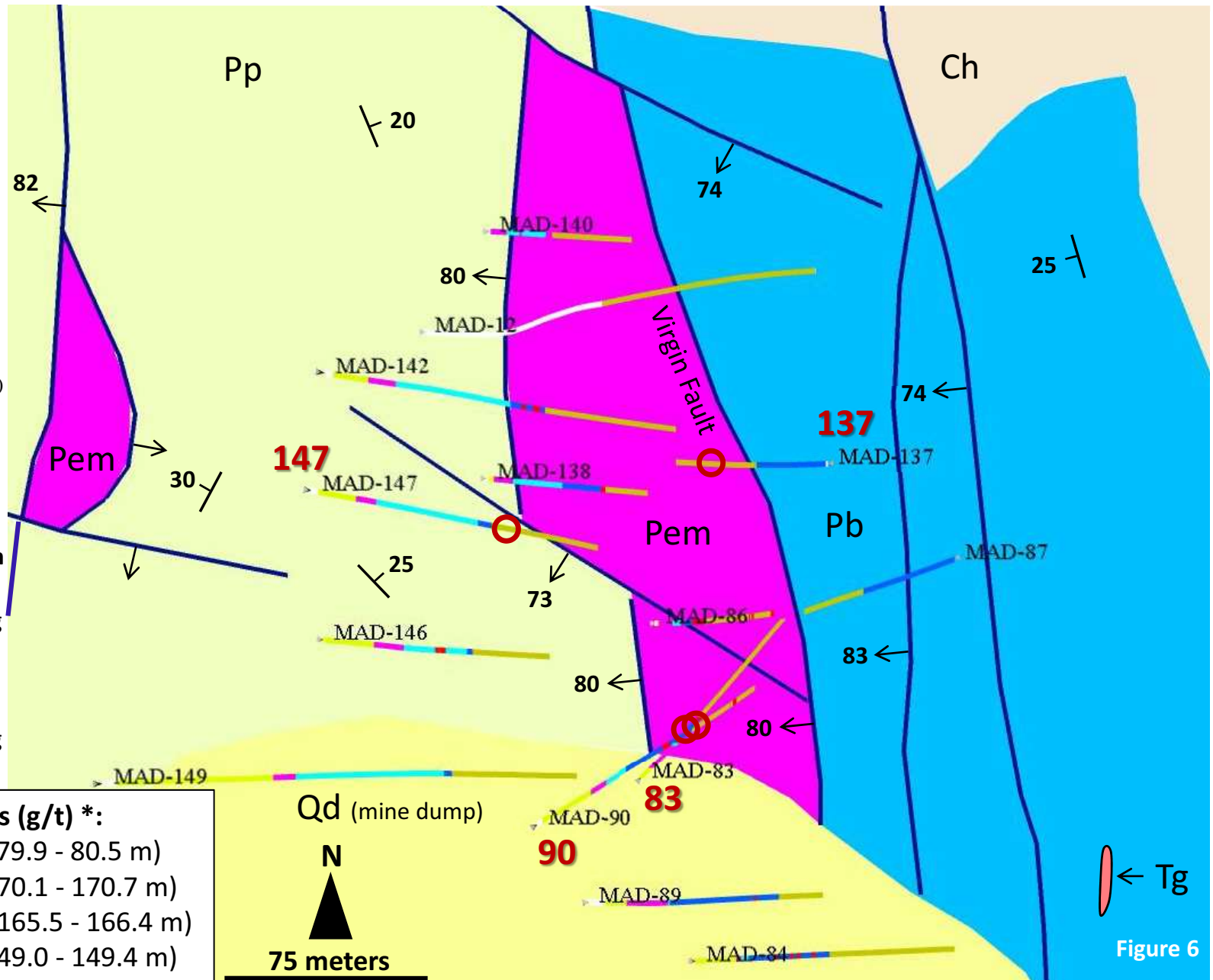


Figure 6

3D Geophysics – TITAN MT

(perspective-view, looking -75° towards the north)

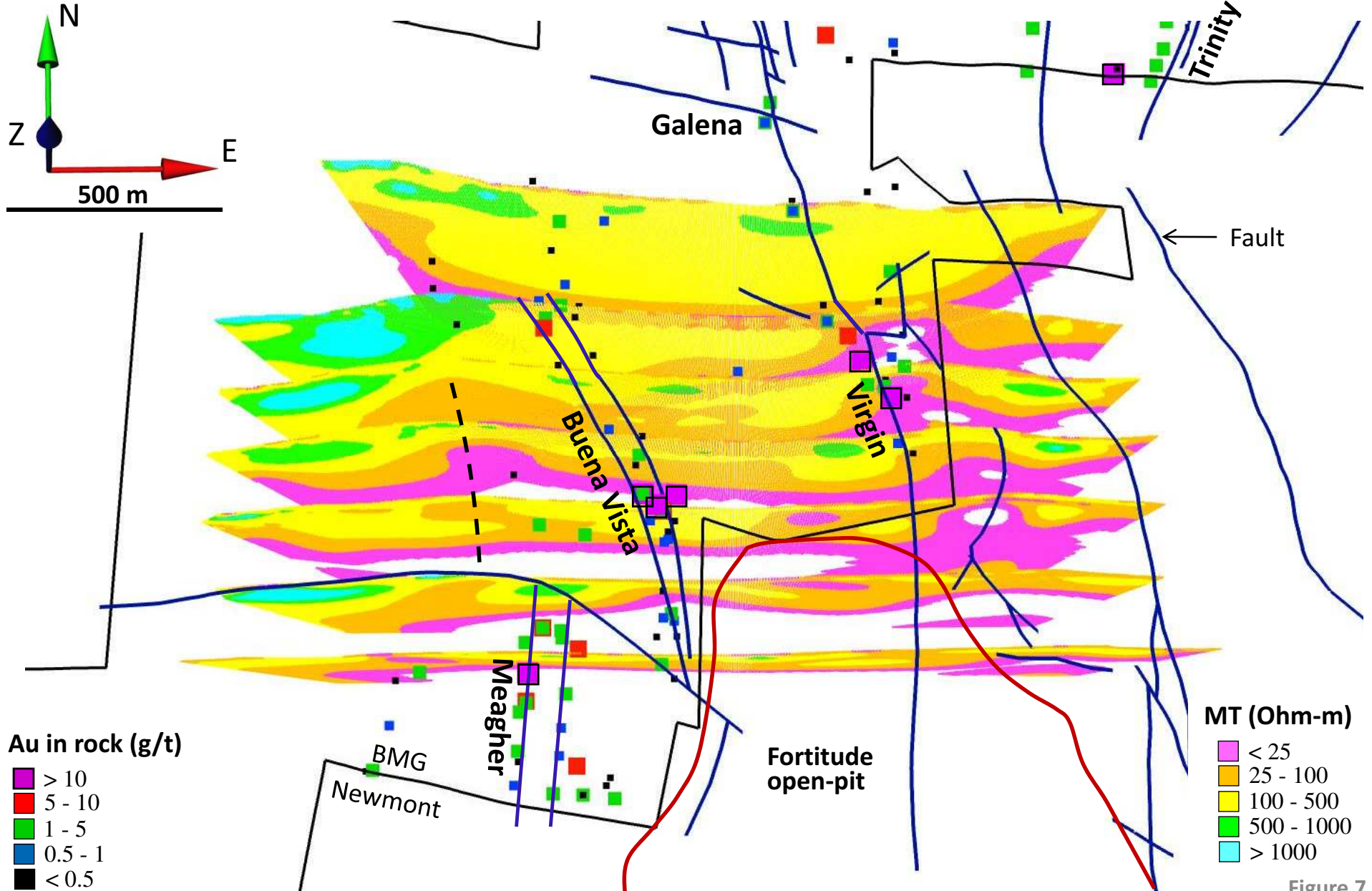
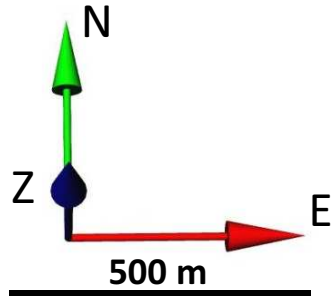


Figure 7

Note: Transparent (white) zones within magenta polygons indicate MT values of < 12 Ohm-m, which is highly conductive.