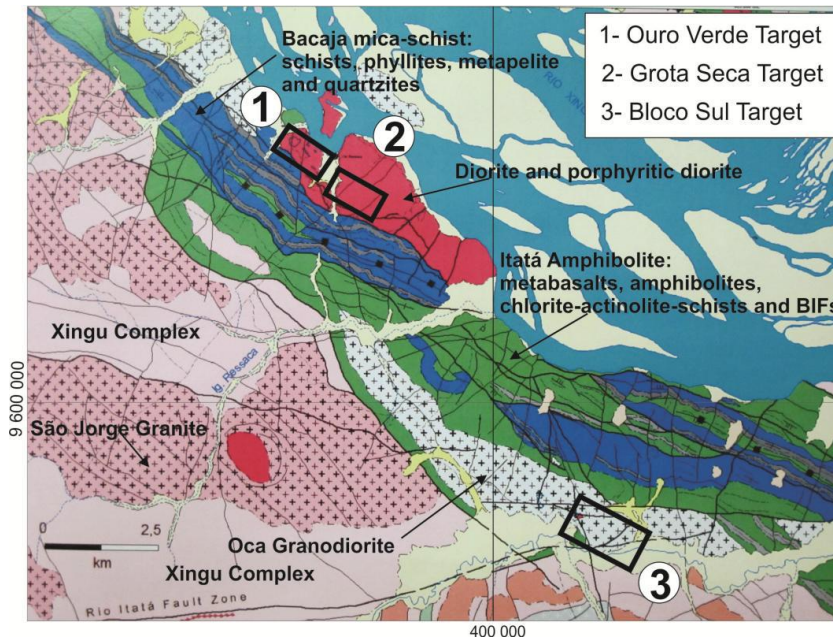




Figures 2 and 3: Regional Geological Map and Synthesis



Geological map showing the location of the Ouro Verde, Grota Seca and Bloco Sul targets. The targets are mostly located in the unnamed diorite - porphyry diorite (red), following its WNW-ESE contact with the mica-schists, phyllites, metapelites and quartzites of the Bacajá Complex. The Itatá amphibolite (green) is closely related to the ore area and show inserted lens-shape bodies of the Bacajá rocks (blue). The South Block area is placed inside the so-called Oca Granodiorite, following the same WNW-ESE regional trend. The area corresponds to part of a shortened granite-greenstone terrain, adjacent to a typical TTG.

### REGIONAL SYNTHESIS

