



Brunswick North New Acquisition

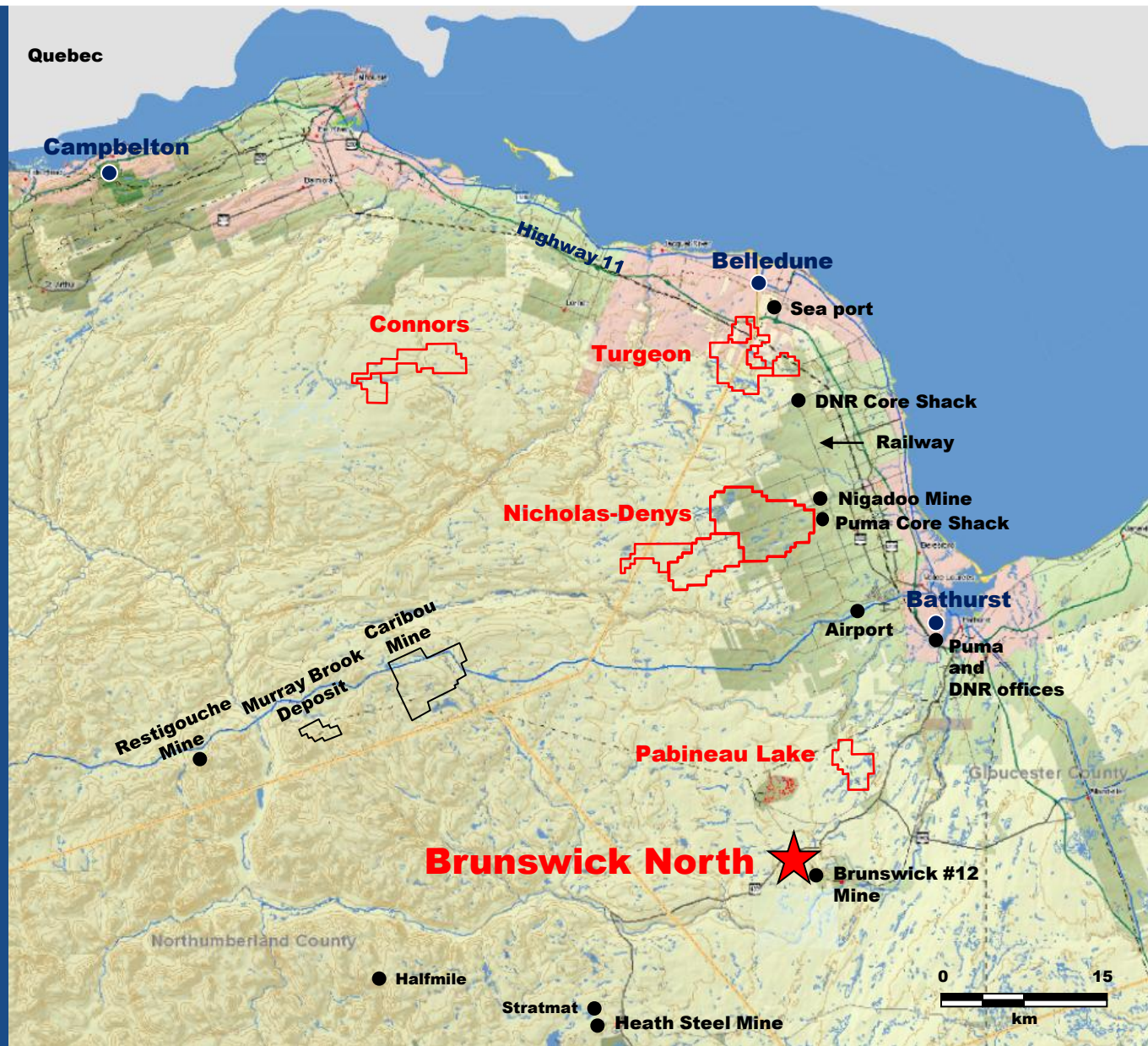
Perfect Location for exploration

Established Bathurst mining camp which welcomes employment opportunities

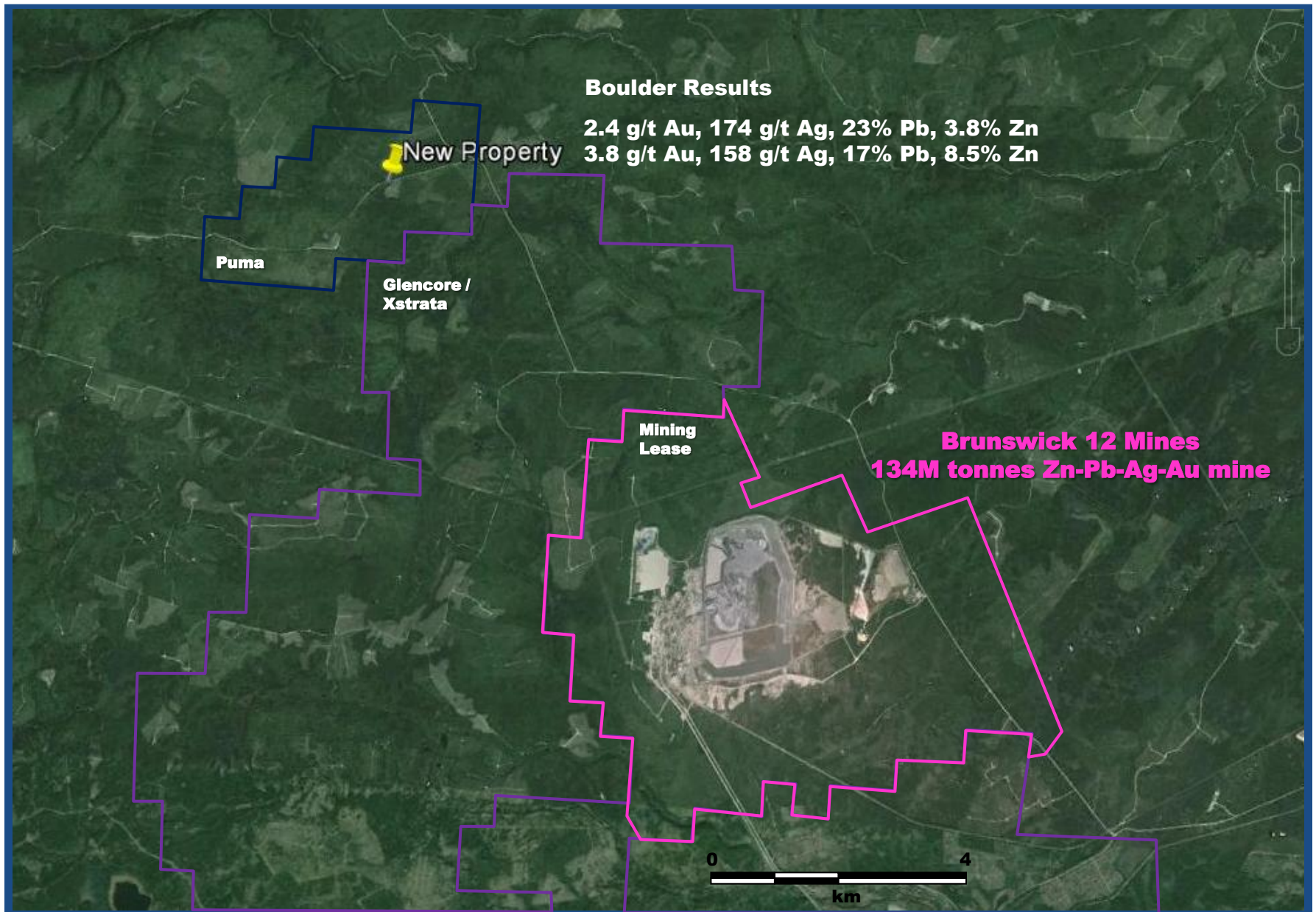
New-Brunswick is the 7^{ème} most prospective area for exploration in the world according to the Fraser Institute in 2014

Bathurst area includes:

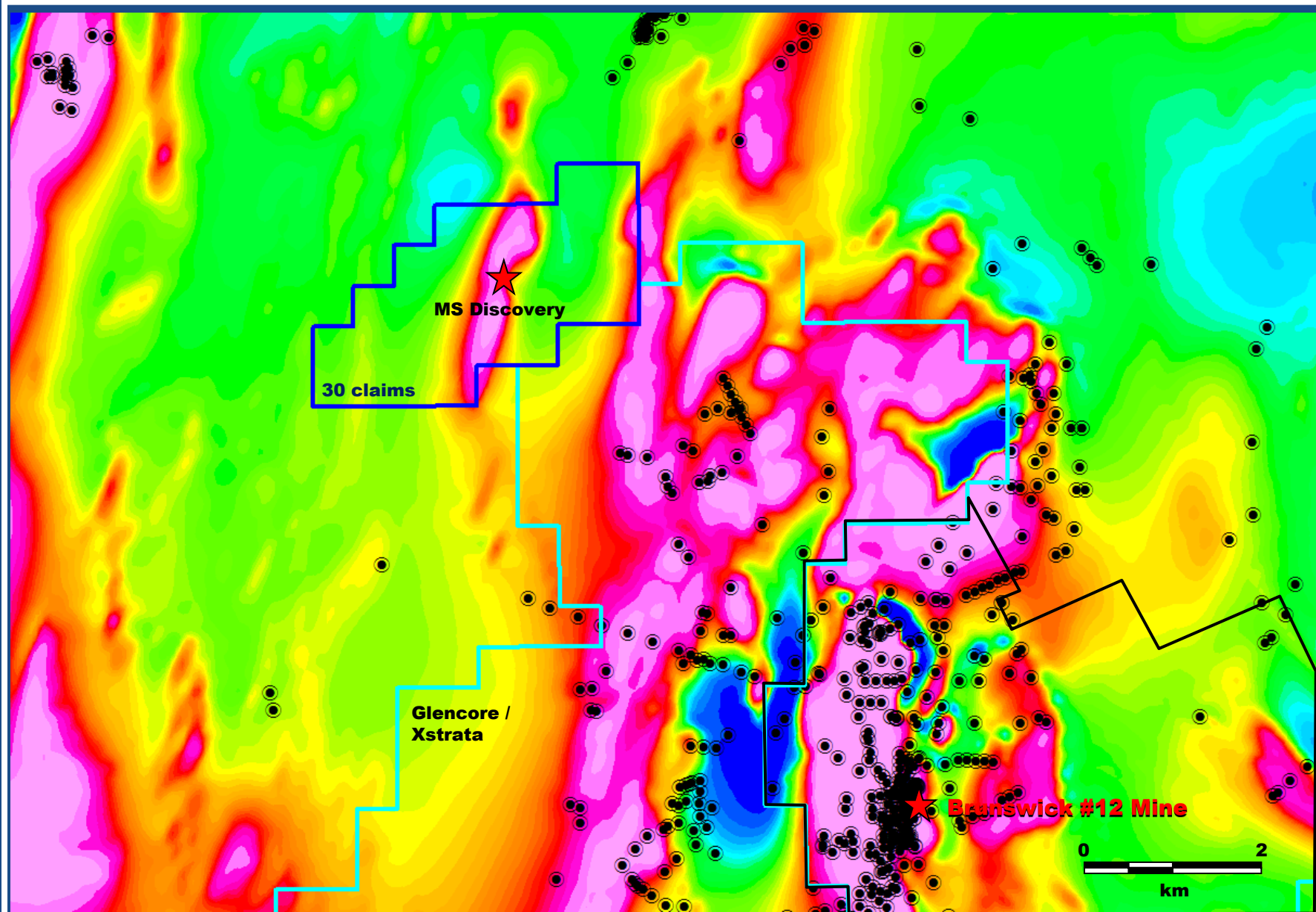
- Skilled labor force
- Regional DNR Office and Core shack
- Airport, Railway, Paved Road
- Stable government policies that offer certainty and reduce the risk of longterm projects



Brunswick North Property



Brunswick North over Mag Survey and Previous Holes



Brunswick North Property VLF and Trenches

Boulder

2.4 g/t Au, 174 g/t Ag, 23% Pb, 3.8% Zn
3.8 g/t Au, 158 g/t Ag, 17% Pb, 8.5% Zn

Boulder

1.8 g/t Au, 225 g/t Ag, 12% Pb, 5.4% Zn

TB14-01

20% to SMS found in the trench (7m)

SMS to MS found in the trench (15m)

Qtz + Arseno + Breccia

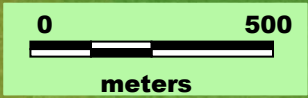
TB14-04

sediments

Mafic Volcanic

sediments

VLF Conductors



Brunswick North Trench TB-14-01



Brunswick North Trench TB-14-04

Qtz + Arseno + Breccia



SMS-MS



Massive Sulphide found in TB14-04



Brunswick North discoveries and Trenches

