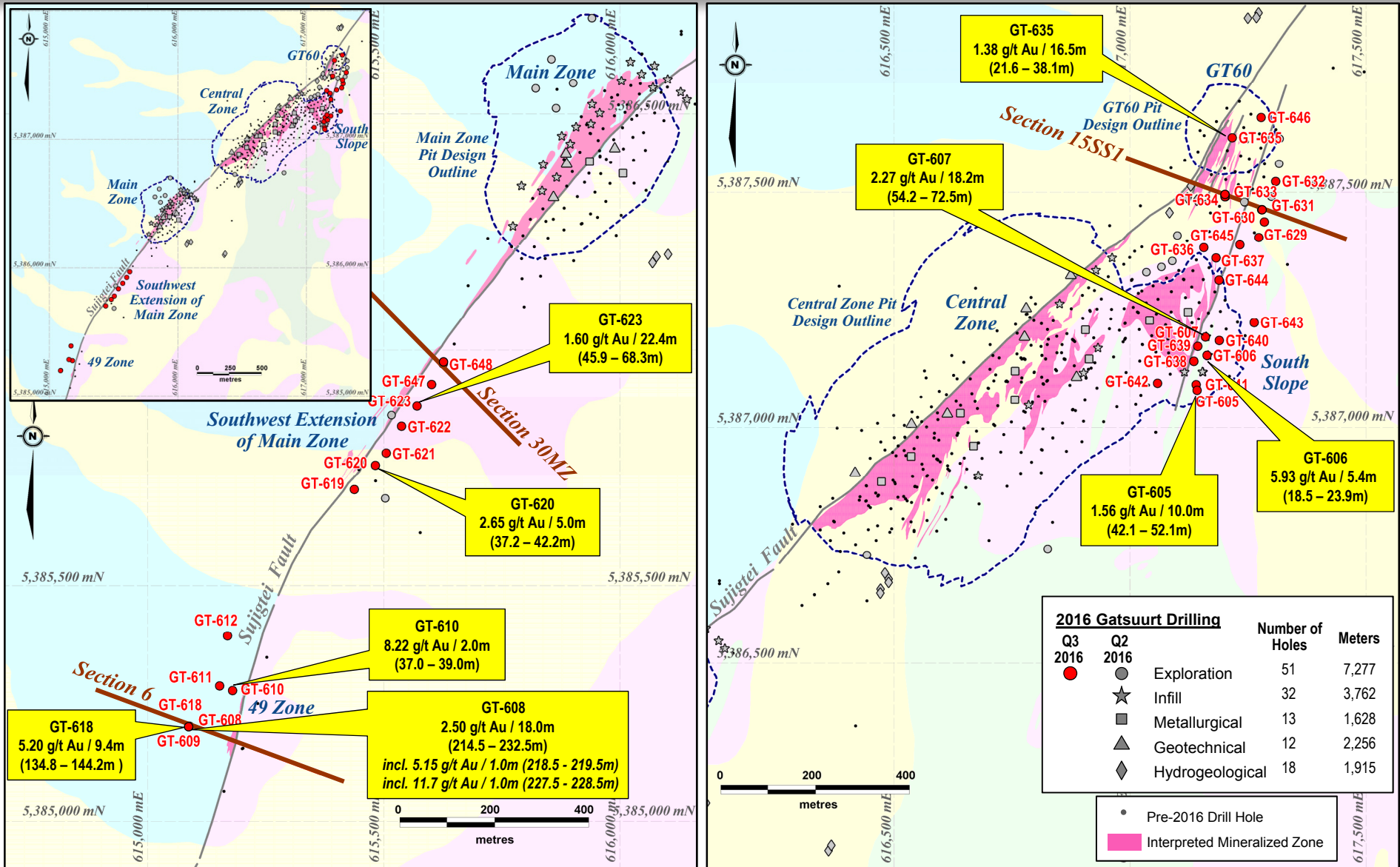
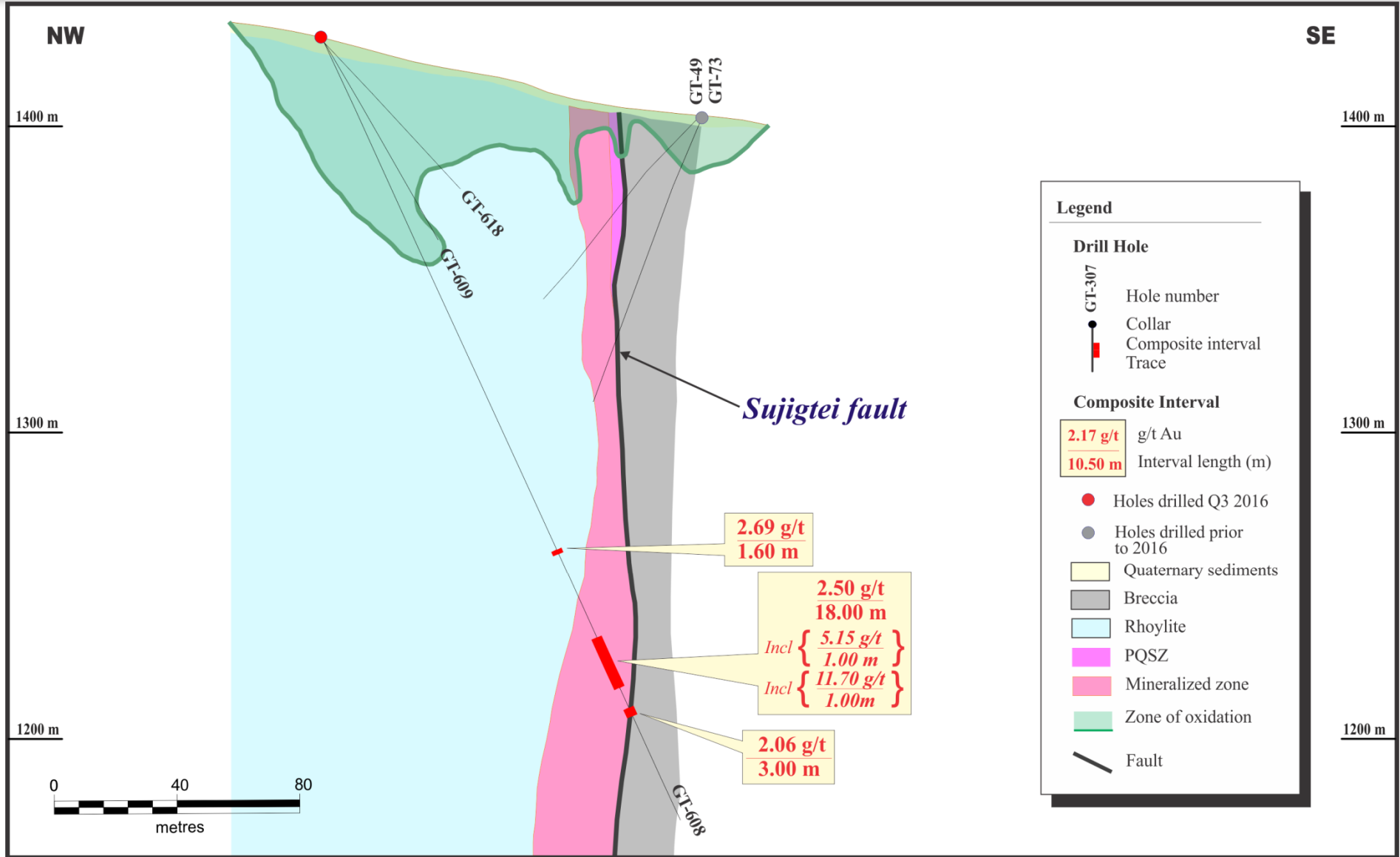


Gatsuurt Deposit – Drill Hole Plan Map



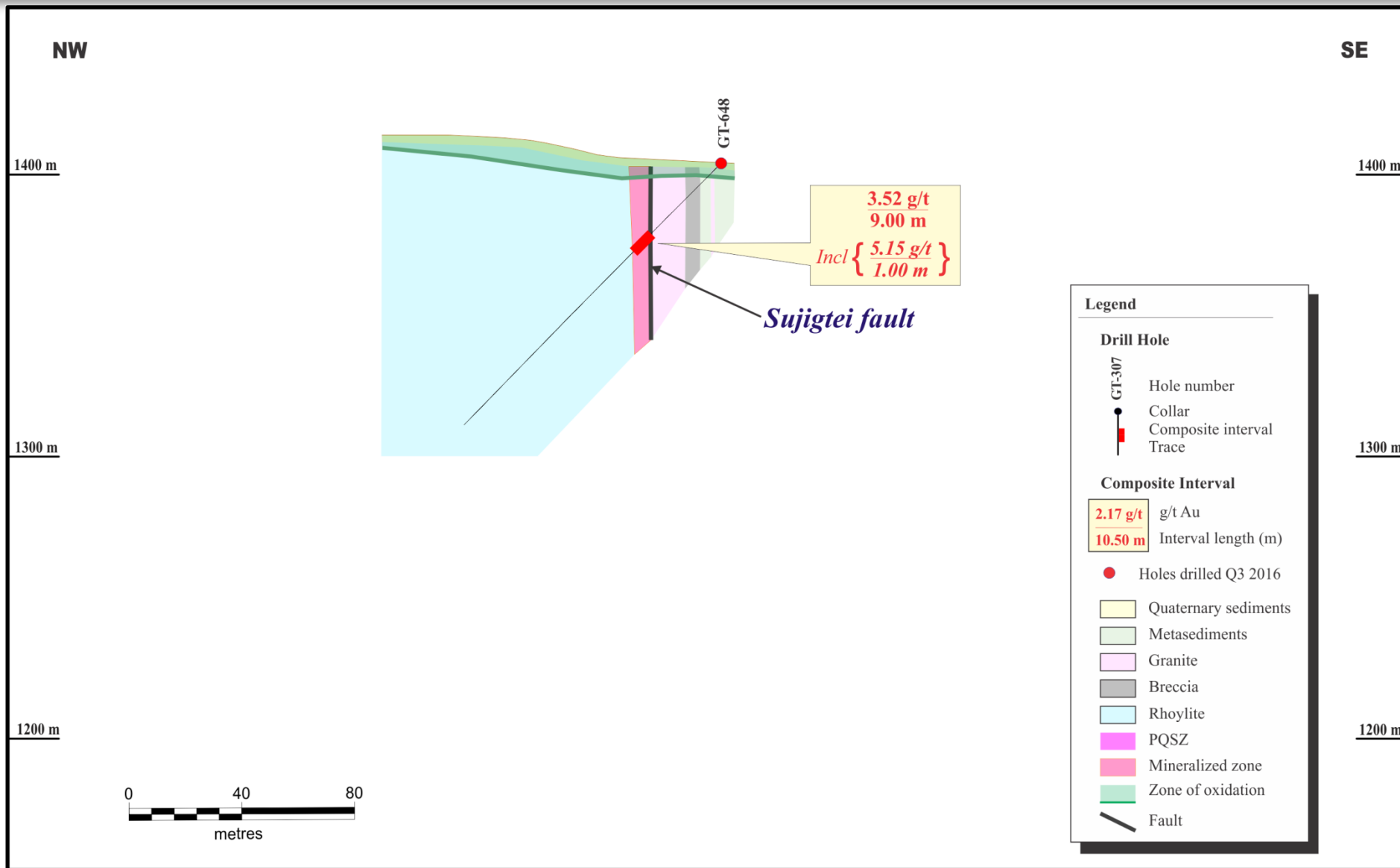
This information should be read together with our news release of November 7th, 2016. Boris Kotlyar, a Certified Professional Geologist, is Centerra's qualified person for the purpose of National Instrument 43-101.

Gatsuurt Deposit – 49 Zone – Section 6



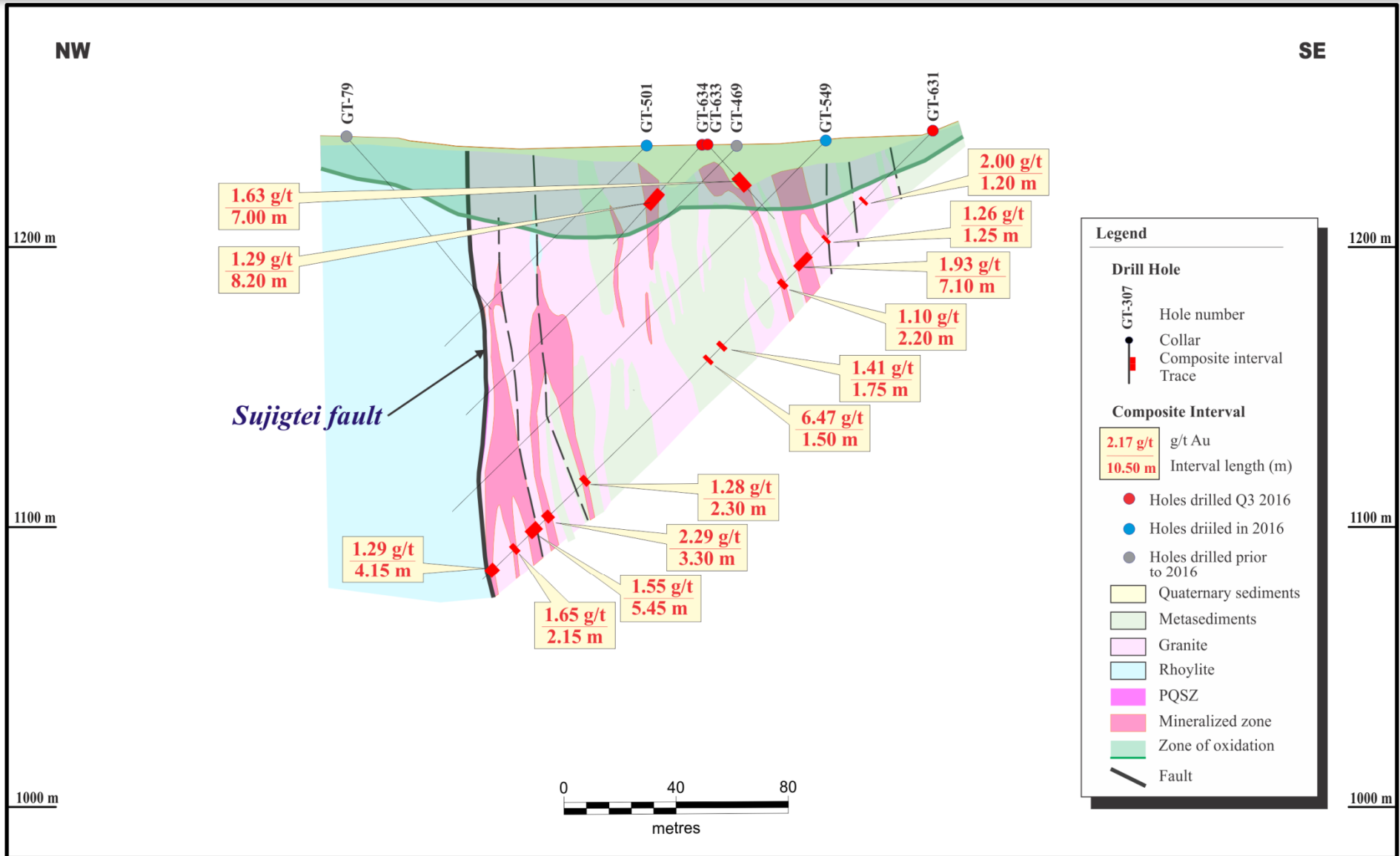
This information should be read together with our news release of November 7th, 2016. Boris Kotlyar, a Certified Professional Geologist, is Centerra's qualified person for the purpose of National Instrument 43-101.

Gatsuurt Deposit – Main Zone – Section 30MZ



This information should be read together with our news release of November 7th, 2016.
Boris Kotlyar, a Certified Professional Geologist, is Centerra's qualified person for the purpose of National Instrument 43-101.

Gatsuurt Deposit – South Slope – Section 15SS1



This information should be read together with our news release of November 7th, 2016. Boris Kotlyar, a Certified Professional Geologist, is Centerra's qualified person for the purpose of National Instrument 43-101.



Centerra Gold Inc. - Gatsuert Drilling Summary

Drill Hole Locations July 1st to September 30th, 2016

Hole ID	Location Easting	Location Northing	Elevation (m)	Length (m)	Collar Azimuth	Collar Dip	Purpose
GT-536GT	615859.30	5386328.70	1327.88	145.0	192	-51	Geotechnical
GT-537	617034.59	5387330.81	1244.16	144.5	316	-53	Exploration
GT-539GT	615989.14	5386432.01	1348.54	175.0	359	-51	Geotechnical
GT-541GT	616874.77	5387327.49	1246.98	200.0	90	-55	Geotechnical
GT-544GT	616613.05	5387034.04	1258.46	225.0	140	-50	Geotechnical
GT-549	617243.33	5387479.71	1237.90	187.8	290	-45	Exploration
GT-550GT	615885.78	5386421.20	1348.73	185.0	295	-55	Geotechnical
GT-551	617299.92	5387491.46	1245.87	247.8	290	-45	Exploration
GT-552	617316.15	5387561.64	1235.47	232.5	290	-50	Exploration
GT-553GT	615887.26	5386398.99	1340.56	185.0	127	-50	Geotechnical
GT-554	617316.73	5387615.36	1236.32	195.2	290	-52	Exploration
GT-555	615900.63	5386566.18	1379.14	100.0	316	-45	Exploration
GT-556	615854.85	5386616.50	1399.11	100.8	316	-45	Exploration
GT-557GT	616776.79	5387196.68	1257.65	280.0	128	-52	Geotechnical
GT-558	615864.63	5386513.40	1375.49	100.0	316	-45	Exploration
GT-559	615821.47	5386554.65	1394.43	100.0	316	-45	Exploration
GT-560	615940.41	5386703.44	1443.43	100.0	316	-45	Exploration
GT-561	617066.71	5387342.04	1243.29	145.8	316	-50	Exploration
GT-562	617089.45	5387354.86	1242.16	157.8	316	-53	Exploration
GT-563	617100.47	5387409.36	1250.73	134.0	316	-59	Exploration
GT-564	616442.34	5386730.49	1275.47	208.8	316	-55	Exploration
GT-565GT	616779.82	5387257.13	1253.03	216.0	308	-61	Geotechnical
GT-566	615516.45	5385862.61	1431.82	100.0	314	-45	Exploration
GT-567	615503.25	5385686.65	1387.26	218.2	314	-45	Exploration
GT-568MET	616006.21	5386376.32	1337.30	215.2	312	-45	Metallurgical
GT-569MET	615935.44	5386400.87	1339.27	135.0	316	-45	Metallurgical
GT-570MET	616473.32	5386886.25	1275.43	45.0	316	-45	Metallurgical
GT-571GT	616537.21	5387011.79	1269.81	230.0	315	-70	Geotechnical
GT-572	616825.34	5386743.76	1349.78	175.0	316	-45	Exploration
GT-573MET	616668.21	5386962.13	1255.14	208.2	316	-60	Metallurgical
GT-574MET	616756.38	5387121.76	1256.22	117.0	136	-45	Metallurgical
GT-575MET	617041.80	5387228.22	1280.14	101.2	110	-45	Metallurgical
GT-576MET	617123.04	5387245.80	1282.34	73.0	110	-45	Metallurgical
GT-577MET	616905.19	5387208.13	1254.33	164.8	316	-57	Metallurgical



Centerra Gold Inc. - Gatsuert Drilling Summary

Drill Hole Locations July 1st to September 30th, 2016

Hole ID	Location Easting	Location Northing	Elevation (m)	Length (m)	Collar Azimuth	Collar Dip	Purpose
GT-578GT	616417.72	5386908.35	1286.79	140.0	193	-55	Geotechnical
GT-579MET	616913.16	5387147.25	1276.89	240.1	316	-53	Metallurgical
GT-580MET	616755.95	5387060.70	1254.59	152.8	316	-50	Metallurgical
GT-581MET	616640.44	5387031.95	1257.41	54.8	316	-45	Metallurgical
GT-582MET	616535.97	5386940.15	1272.64	67.0	316	-60	Metallurgical
GT-583GT	616886.68	5387112.45	1279.59	150.0	128	-65	Geotechnical
GT-584HYD	616471.27	5386657.58	1262.83	163.4	0	-90	Hydrogeological
GT-585HYD	616488.44	5386679.18	1262.08	50.0	0	-90	Hydrogeological
GT-586HYD	617083.98	5387457.83	1248.03	50.0	0	-90	Hydrogeological
GT-587HYD	617121.30	5387488.74	1237.57	236.5	0	-90	Hydrogeological
GT-588HYD	616488.67	5386671.96	1262.03	8.0	0	-90	Hydrogeological
GT-589HYD	617249.87	5387869.61	1244.90	182.4	0	-90	Hydrogeological
GT-590HYD	617128.59	5387514.03	1238.96	181.0	0	-90	Hydrogeological
GT-591HYD	617272.55	5387881.09	1245.04	40.0	0	-90	Hydrogeological
GT-592HYD	618135.02	5388080.41	1222.39	126.0	0	-90	Hydrogeological
GT-593HYD	617141.52	5387484.16	1237.65	38.0	0	-90	Hydrogeological
GT-594HYD	616480.73	5386692.14	1261.77	165.0	0	-90	Hydrogeological
GT-595HYD	616076.95	5386199.52	1303.20	230.0	0	-90	Hydrogeological
GT-596HYD	617268.04	5387871.32	1244.75	182.0	0	-90	Hydrogeological
GT-597HYD	616361.28	5386104.98	1282.31	221.5	0	-90	Hydrogeological
GT-598HYD	616068.74	5386186.57	1302.98	54.0	0	-90	Hydrogeological
GT-599HYD	618141.91	5388085.89	1222.13	70.0	0	-90	Hydrogeological
GT-600HYD	616101.48	5386204.14	1303.26	200.0	0	-90	Hydrogeological
GT-601HYD	616367.23	5386116.44	1281.72	45.0	0	-90	Hydrogeological
GT-602HYD	616470.78	5386649.23	1263.24	40.0	0	-90	Hydrogeological
GT-603GT	616737.73	5386883.74	1307.86	125.0	140	-55	Geotechnical
GT-604MET	616476.95	5386889.11	1275.68	53.9	316	-60	Metallurgical
GT-605	617142.10	5387081.41	1332.22	125.0	316	-45	Exploration
GT-606	617162.91	5387154.45	1312.24	118.7	110	-45	Exploration
GT-607	617159.60	5387192.85	1300.72	145.0	110	-45	Exploration
GT-608	615088.37	5385202.78	1428.15	280.0	110	-65	Exploration
GT-609	615088.37	5385202.78	1428.15	227.1	85	-57	Exploration
GT-610	615180.01	5385279.15	1400.80	80.0	110	-50	Exploration
GT-611	615152.39	5385288.59	1406.20	156.7	110	-65	Exploration
GT-612	615168.95	5385394.68	1421.62	170.0	110	-60	Exploration



Centerra Gold Inc. - Gatsuert Drilling Summary

Drill Hole Locations July 1st to September 30th, 2016

Hole ID	Location Easting	Location Northing	Elevation (m)	Length (m)	Collar Azimuth	Collar Dip	Purpose
GT-613RIB	621667.32	5387630.95	1144.87	75.0	0	-90	RIB - Environmental
GT-614RIB	621682.25	5387727.58	1145.82	52.0	0	-90	RIB - Environmental
GT-615RIB	621698.18	5387815.78	1147.43	50.0	0	-90	RIB - Environmental
GT-616RIB	621714.16	5387911.76	1151.34	50.0	0	-90	RIB - Environmental
GT-617RIB	621729.00	5388002.83	1171.32	50.0	0	-90	RIB - Environmental
GT-618	615087.36	5385201.86	1428.40	181.7	130	-45	Exploration
GT-619	615437.70	5385705.10	1396.83	160.0	314	-45	Exploration
GT-620	615482.13	5385756.60	1404.50	109.8	314	-45	Exploration
GT-621	615504.98	5385782.32	1409.59	117.0	314	-45	Exploration
GT-622	615537.43	5385839.36	1422.02	127.8	314	-45	Exploration
GT-623	615570.47	5385881.74	1430.48	157.9	316	-45	Exploration
GT-624RIB	621568.24	5387412.70	1141.28	75.0	0	-90	RIB - Environmental
GT-625RIB	621734.30	5388071.10	1185.08	75.0	0	-90	RIB - Environmental
GT-626RIB	621783.10	5387342.66	1138.68	75.0	0	-90	RIB - Environmental
GT-627RIB	621816.25	5387666.99	1142.62	50.0	0	-90	RIB - Environmental
GT-628RIB	621857.92	5387818.91	1146.70	50.0	0	-90	RIB - Environmental
GT-629	617272.77	5387404.49	1256.80	170.0	290	-45	Exploration
GT-630	617284.45	5387437.87	1245.05	170.0	290	-45	Exploration
GT-631	617278.52	5387464.66	1241.37	226.9	290	-45	Exploration
GT-632	617308.75	5387523.79	1235.56	170.0	290	-45	Exploration
GT-633	617202.84	5387491.88	1236.68	50.0	136	-45	Exploration
GT-634	617201.88	5387495.20	1236.62	50.0	316	-45	Exploration
GT-635	617216.66	5387617.39	1238.52	50.0	290	-45	Exploration
GT-636	617156.08	5387383.04	1249.21	170.0	110	-45	Exploration
GT-637	617182.26	5387361.13	1267.77	154.9	110	-45	Exploration
GT-638	617135.30	5387141.97	1313.96	100.0	110	-45	Exploration
GT-639	617143.42	5387173.62	1304.97	83.0	110	-45	Exploration
GT-640	617189.16	5387185.68	1306.45	172.0	110	-45	Exploration
GT-641	617140.00	5387093.25	1330.48	125.0	110	-45	Exploration
GT-642	617058.27	5387096.11	1315.43	110.0	110	-45	Exploration
GT-643	617262.90	5387223.70	1302.28	128.0	110	-45	Exploration
GT-644	617188.55	5387314.34	1275.34	68.0	110	-45	Exploration
GT-645	617232.84	5387389.09	1260.11	100.0	290	-45	Exploration
GT-646	617277.83	5387660.03	1237.49	96.0	290	-45	Exploration
GT-647	615600.93	5385928.29	1421.86	148.0	316	-45	Exploration
GT-648	615625.39	5385972.05	1403.86	130.0	316	-45	Exploration



Centerra Gold Inc. - Gatsuert 2016 Drilling Results

Period July 1st, 2016 to September 30th, 2016

Drill Hole	Location	Purpose	From (m)	To (m)	Core Length (m)	Au (g/t)
GT-536GT	Main Zone	Geotechnical	2.6	7.8	5.2	3.83
			15.3	30.4	15.2	2.04
GT-539GT	Main Zone	Geotechnical	40.0	55.9	15.9	1.68
			63.6	64.6	1.0	2.49
			71.9	73.2	1.3	1.92
			79.3	80.4	1.1	2.97
			86.4	87.6	1.3	1.15
			93.0	101.7	8.8	1.38
			105.5	175.0	69.6	2.31
<i>includes</i> 120.5	121.5	1.0	5.20			
<i>includes</i> 128.5	129.7	1.2	6.03			
GT-541GT	Central Zone	Geotechnical	44.1	48.3	4.2	55.40
			<i>includes</i> 44.1	46.3	2.2	105.91
			51.6	71.0	19.4	2.43
			<i>includes</i> 57.2	58.4	1.2	5.47
			81.0	82.3	1.3	10.60
			90.2	91.7	1.5	8.39
107.9	110.0	2.1	2.18			
GT-544GT	Central Zone	Geotechnical	8.4	37.3	28.9	3.09
			<i>includes</i> 25.3	26.3	1.0	5.04
			<i>includes</i> 29.3	30.3	1.0	5.28
			46.3	48.5	2.2	3.54
			56.9	58.2	1.3	1.61
			126.7	127.9	1.2	12.70
163.2	165.3	2.1	1.31			
GT-550GT	Main Zone	Geotechnical	1.0	4.6	3.6	2.61
			11.2	15.9	4.7	1.40
			27.9	30.1	2.2	1.32
			34.3	35.4	1.1	1.28
			49.4	55.0	5.6	0.98
			77.4	78.8	1.4	1.48
			84.4	87.2	2.8	2.23
			97.0	98.4	1.4	1.27
111.0	112.4	1.4	1.18			
132.7	133.7	1.0	1.85			
GT-553GT	Main Zone	Geotechnical	3.4	57.0	53.6	2.52
			<i>includes</i> 31.8	32.8	1.0	7.33
			<i>includes</i> 51.3	52.3	1.0	5.97

Notes: Metallurgical holes are twins of previously drilled holes and were drilled in Q2 2016, sampled and assayed in Q3 2016.
 Geotechnical holes were drilled in Q2 2016, sampled and assayed in Q3 2016.
 Assays are reported true values without top cutting
 Reported intervals are greater than 1.0 g/t Au and greater than 1 metre length or GxT greater than 4.0 (Au grade multiplied by interval length)
 Maximum internal waste 4 metres
 True widths for mineralized zones are about 60% to 90% of stated down hole interval
 This information should be read together with our news release of November 7th, 2016.
 Boris Kotlyar, a Certified Professional Geologist, is Centerra's qualified person for the purpose of National Instrument 43-101
 Tables are current as of September 30, 2016.



Centerra Gold Inc. - Gatsuert 2016 Drilling Results

Period July 1st, 2016 to September 30th, 2016

Drill Hole	Location	Purpose	From (m)	To (m)	Core Length (m)	Au (g/t)
GT-557GT	Central Zone	Geotechnical	23.2	28.6	5.4	7.08
			<i>includes</i> 25.9	27.3	1.4	22.60
			81.5	82.7	1.2	5.98
			86.3	92.9	6.6	16.75
			<i>includes</i> 86.3	87.5	1.2	5.53
			<i>includes</i> 89.9	92.9	3.0	34.13
			102.6	114.3	11.7	3.84
			<i>includes</i> 102.6	105.0	2.4	12.73
			137.8	139.9	2.1	1.51
GT-565GT	Central Zone	Geotechnical	<i>no significant intercepts</i>			
GT-571GT	Central Zone	Geotechnical	<i>no significant intercepts</i>			
GT-578GT	Central Zone	Geotechnical	79.8	88.8	9.1	3.78
			99.3	100.8	1.5	1.07
GT-579MET	Central Zone	Metallurgical	15.3	43.6	28.3	2.80
			<i>includes</i> 20.3	21.0	0.6	58.50
			53.7	68.7	15.0	1.23
			119.1	128.4	9.3	7.06
			<i>includes</i> 122.4	123.4	1.0	27.20
			153.4	154.4	1.0	10.50
			156.2	157.2	1.0	29.50
			198.5	199.5	1.0	7.35
			211.5	212.5	1.0	5.99
			222.6	223.6	1.0	7.30
			230.6	238.9	8.3	6.99
			<i>includes</i> 230.6	231.6	1.0	14.50
<i>includes</i> 233.6	235.4	1.8	12.80			
<i>includes</i> 237.8	238.9	1.1	8.48			
GT-580MET	Central Zone	Metallurgical	12.1	14.4	2.4	1.34
			29.6	31.0	1.5	1.74
			34.5	36.1	1.6	6.30
			62.1	66.6	4.5	2.42
			90.3	92.2	1.9	1.74
			127.7	132.0	4.3	1.02
			145.0	150.2	5.3	2.40
GT-581MET	Central Zone	Metallurgical	7.1	8.5	1.4	7.46
			11.7	32.3	20.7	5.15
			<i>includes</i> 14.1	15.1	1.0	7.58
			<i>includes</i> 16.1	17.1	1.0	7.96
			<i>includes</i> 18.2	23.6	5.4	6.35
			<i>includes</i> 25.4	29.5	4.1	6.54
			35.7	52.3	16.6	2.19
<i>includes</i> 40.8	41.6	0.8	7.80			
GT-582MET	Central Zone	Metallurgical	8.5	64.7	56.2	4.43
			<i>includes</i> 8.5	9.6	1.1	8.43
			<i>includes</i> 18.0	22.0	4.0	10.46
			<i>includes</i> 24.0	25.0	1.0	11.10
			<i>includes</i> 26.0	27.4	1.4	5.55
			<i>includes</i> 29.7	36.0	6.3	9.03
			<i>includes</i> 37.6	39.0	1.5	9.52

Notes: Metallurgical holes are twins of previously drilled holes and were drilled in Q2 2016, sampled and assayed in Q3 2016.
 Geotechnical holes were drilled in Q2 2016, sampled and assayed in Q3 2016.
 Assays are reported true values without top cutting
 Reported intervals are greater than 1.0 g/t Au and greater than 1 metre length or GxT greater than 4.0 (Au grade multiplied by interval length)
 Maximum internal waste 4 metres
 True widths for mineralized zones are about 60% to 90% of stated down hole interval
 This information should be read together with our news release of November 7th, 2016.
 Boris Kotlyar, a Certified Professional Geologist, is Centerra's qualified person for the purpose of National Instrument 43-101
 Tables are current as of September 30, 2016.



Centerra Gold Inc. - Gatsurt 2016 Drilling Results

Period July 1st, 2016 to September 30th, 2016

Page 3 of 5

Drill Hole	Location	Purpose	From (m)	To (m)	Core Length (m)	Au (g/t)
GT-583GT	Central Zone	Geotechnical	21.4	24.9	3.5	9.99
			<i>includes</i> 23.2	24.9	1.8	16.80
			32.1	56.7	24.6	1.84
			64.7	66.5	1.8	1.06
			110.8	115.0	4.2	1.90
			118.9	142.3	23.5	1.02
GT-584HYD	Central Zone	Hydrogeological	<i>no significant intercepts</i>			
GT-585HYD	Central Zone	Hydrogeological	<i>no significant intercepts</i>			
GT-586HYD	Central Zone	Hydrogeological	45.0	50.0	5.0	1.42
GT-587HYD	Central Zone	Hydrogeological	172.0	175.0	3.0	1.91
			189.7	190.9	1.2	1.07
			223.0	226.0	3.0	1.22
GT-588HYD	Central Zone	Hydrogeological	<i>no significant intercepts</i>			
GT-589HYD	Narst	Hydrogeological	<i>drilled outside of mineralized zones</i>			
GT-590HYD	Central Zone	Hydrogeological	<i>no significant intercepts</i>			
GT-591HYD to GT-592HYD		Hydrogeological	<i>drilled outside of mineralized zones</i>			
GT-595HYD	Main Zone	Hydrogeological	<i>no significant intercepts</i>			
GT-596HYD - GT-597HYD		Hydrogeological	<i>no significant intercepts</i>			
GT-598HYD	Main Zone	Hydrogeological	<i>no significant intercepts</i>			
GT-599HYD to GT-601HYD		Hydrogeological	<i>drilled outside of mineralized zones</i>			
GT-602HYD	Central Zone	Hydrogeological	<i>no significant intercepts</i>			
GT-603GT	Central Zone	Geotechnical	<i>no significant intercepts</i>			
GT-604MET	Central Zone	Metallurgical	3.0	33.9	30.9	3.01
			<i>includes</i> 28.9	29.9	1.0	5.76
			41.5	52.3	10.8	2.36
GT-605	South Slope	Exploration	42.1	52.1	10.0	1.56
			56.9	60.2	3.3	1.24
			69.4	75.4	6.0	1.50
GT-606	South Slope	Exploration	18.5	23.9	5.4	5.93
			<i>includes</i> 21.8	22.9	1.1	16.50
			77.1	78.5	1.4	1.93
			98.7	101.3	2.6	11.60
			<i>includes</i> 98.7	100.0	1.3	20.80
			112.2	116.3	4.1	2.11
GT-607	South Slope	Exploration	28.6	29.9	1.4	4.44
			54.3	72.5	18.3	2.27
			<i>includes</i> 64.1	65.5	1.4	16.80
			76.7	82.3	5.6	3.07
			<i>includes</i> 78.1	79.5	1.4	8.52
			108.5	110.0	1.5	1.00
			139.3	141.5	2.2	3.65
<i>includes</i> 140.4	141.5	1.1	6.21			
GT-608	49 Zone	Exploration	182.9	184.5	1.6	2.69
			214.5	232.5	18.0	2.50
			<i>includes</i> 218.5	219.5	1.0	5.15
			<i>includes</i> 227.5	228.5	1.0	11.70
			239.6	242.6	3.0	2.06
GT-609	49 Zone	Exploration	107.6	109.3	1.7	1.59
			182.0	183.0	1.0	1.24
			187.5	191.2	3.7	1.97
			202.6	205.6	3.0	1.87

Notes: Metallurgical holes are twins of previously drilled holes and were drilled in Q2 2016, sampled and assayed in Q3 2016.

Geotechnical holes were drilled in Q2 2016, sampled and assayed in Q3 2016.

Assays are reported true values without top cutting

Reported intervals are greater than 1.0 g/t Au and greater than 1 metre length or GxT greater than 4.0 (Au grade multiplied by interval length)

Maximum internal waste 4 metres

True widths for mineralized zones are about 60% to 90% of stated down hole interval

This information should be read together with our news release of November 7th, 2016.

Boris Kotlyar, a Certified Professional Geologist, is Centerra's qualified person for the purpose of National Instrument 43-101

Tables are current as of September 30, 2016.



Centerra Gold Inc. - Gatsurt 2016 Drilling Results

Period July 1st, 2016 to September 30th, 2016

Page 4 of 5

Drill Hole	Location	Purpose	From (m)	To (m)	Core Length (m)	Au (g/t)
GT-610	49 Zone	Exploration	37.0	40.0	3.0	6.21
			<i>includes</i> 37.0	39.0	2.0	8.22
GT-611	49 Zone	Exploration	120.6	124.9	4.3	1.19
GT-612	49 Zone	Exploration	<i>no significant intercepts</i>			
GT-613RIB to GT-617RIB		RIB - Environmental	<i>drilled outside of mineralized zones</i>			
GT-618	49 Zone	Exploration	134.8	144.2	9.4	5.20
			<i>includes</i> 136.0	141.0	5.0	7.37
GT-619	Main Zone SW Extension	Exploration	25.9	26.9	1.0	1.66
			39.9	40.9	1.0	2.52
			49.9	50.9	1.0	2.58
			135.0	136.0	1.0	1.23
GT-620	Main Zone SW Extension	Exploration	37.2	42.2	5.0	2.65
			<i>includes</i> 38.2	39.2	1.0	5.23
			57.2	58.3	1.1	1.13
GT-621	Main Zone SW Extension	Exploration	<i>no significant intercepts</i>			
GT-622	Main Zone SW Extension	Exploration	39.4	46.6	7.2	1.53
			71.9	74.6	2.6	1.40
			80.0	84.1	4.1	1.68
GT-623	Main Zone SW Extension	Exploration	46.0	68.4	22.4	1.60
GT-624RIB to GT-628RIB		RIB - Environmental	<i>drilled outside of mineralized zones</i>			
GT-629	GT60	Exploration	52.4	53.6	1.3	1.14
			63.1	67.0	3.9	1.70
GT-630	GT60	Exploration	43.7	45.1	1.3	1.25
			58.9	60.0	1.1	1.02
GT-631	GT60	Exploration	34.4	35.6	1.2	2.00
			53.6	54.9	1.3	1.26
			62.1	69.2	7.1	1.93
			75.3	77.5	2.2	1.10
			106.5	108.3	1.8	1.41
			113.5	115.0	1.5	6.47
			175.0	177.3	2.3	1.28
			192.9	196.2	3.3	2.29
			198.9	204.3	5.5	1.55
			210.1	212.2	2.1	1.65
220.2	224.4	4.2	1.29			
GT-632	GT60	Exploration	66.9	73.1	6.2	1.18
			144.2	146.0	1.8	1.43
			152.2	154.8	2.6	1.24
			158.7	161.3	2.6	1.15
			166.3	170.0	3.8	1.05
GT-633	GT60	Exploration	15.5	22.5	7.0	1.63
GT-634	GT60	Exploration	23.3	31.5	8.2	1.29
GT-635	GT60	Exploration	7.6	9.0	1.4	1.49
			21.6	38.1	16.5	1.38
			42.5	45.0	2.5	1.13
GT-636	South Slope	Exploration	7.0	8.3	1.3	1.01
			15.3	17.0	1.8	1.20
			29.5	33.3	3.9	1.33
			58.6	61.2	2.6	3.24

Notes: Metallurgical holes are twins of previously drilled holes and were drilled in Q2 2016, sampled and assayed in Q3 2016.

Geotechnical holes were drilled in Q2 2016, sampled and assayed in Q3 2016.

Assays are reported true values without top cutting

Reported intervals are greater than 1.0 g/t Au and greater than 1 metre length or GxT greater than 4.0 (Au grade multiplied by interval length)

Maximum internal waste 4 metres

True widths for mineralized zones are about 60% to 90% of stated down hole interval

This information should be read together with our news release of November 7th, 2016.

Boris Kotlyar, a Certified Professional Geologist, is Centerra's qualified person for the purpose of National Instrument 43-101

Tables are current as of September 30, 2016.



Centerra Gold Inc. - Gatsuurt 2016 Drilling Results

Period July 1st, 2016 to September 30th, 2016

Page 5 of 5

Drill Hole	Location	Purpose	From (m)	To (m)	Core Length (m)	Au (g/t)
GT-637	South Slope	Exploration	0.0	2.4	2.4	1.86
			6.0	7.2	1.2	1.35
			10.8	12.0	1.2	1.29
			16.8	19.2	2.4	2.37
			22.8	25.3	2.5	1.38
			36.6	39.2	2.6	1.44
			73.6	74.6	1.0	1.13
88.0	91.2	3.2	1.37			
GT-638	South Slope	Exploration	6.5	8.1	1.6	1.56
			71.1	74.2	3.1	3.00
GT-639	South Slope	Exploration	3.5	5.0	1.5	1.89
			55.0	60.0	5.0	1.19
			68.0	72.0	4.0	2.19
GT-640	South Slope	Exploration	75.0	77.0	2.0	1.27
			33.3	37.7	4.4	2.19
			45.5	47.5	2.0	2.68
			49.5	50.5	1.0	1.10
			62.7	66.3	3.6	2.01
			85.8	87.1	1.3	1.05
			119.0	122.0	3.0	1.60
127.0	131.0	4.0	1.46			
140.1	141.2	1.1	1.77			
144.3	145.8	1.5	3.75			
152.7	153.7	1.0	1.43			
GT-641	South Slope	Exploration	9.0	12.9	3.9	2.14
			20.3	22.3	2.0	1.48
			30.0	34.7	4.7	1.53
			66.3	71.4	5.1	1.44
GT-642	South Slope	Exploration	46.5	48.0	1.5	2.41
GT-643	South Slope	Exploration	11.5	14.4	2.9	1.06
			39.5	44.1	4.6	3.89
			<i>includes</i> 39.5	<i>41.1</i>	<i>1.6</i>	<i>7.31</i>
			55.7	65.7	10.0	5.07
			<i>includes</i> 55.7	<i>61.7</i>	<i>6.0</i>	<i>7.54</i>
			80.4	82.5	2.1	2.05
			93.4	101.8	8.4	1.49
107.3	119.0	11.7	2.14			
<i>includes</i> 112.3	<i>114.3</i>	<i>2.0</i>	<i>5.64</i>			
GT-644	South Slope	Exploration	6.2	11.7	5.5	2.01
			38.7	42.7	4.0	5.65
			<i>includes</i> 38.7	<i>41.1</i>	<i>2.4</i>	<i>8.36</i>
GT-645	South Slope	Exploration	64.1	68.3	4.2	5.68
			<i>includes</i> 64.1	<i>65.3</i>	<i>1.2</i>	<i>7.64</i>
			<i>includes</i> 66.8	<i>68.3</i>	<i>1.5</i>	<i>8.18</i>
GT-646	GT60	Exploration	79.5	81.6	2.1	1.05
			86.4	91.4	5.0	1.47
GT-647	Main Zone SW Extension	Exploration	41.8	49.8	8.0	3.36
			<i>includes</i> 45.8	<i>47.8</i>	<i>2.0</i>	<i>5.90</i>
			53.8	54.9	1.1	1.00
			58.7	60.1	1.3	1.01
GT-648	Main Zone	Exploration	35.2	44.2	9.0	3.52
			<i>includes</i> 40.2	<i>41.2</i>	<i>1.0</i>	<i>5.15</i>

Notes: Metallurgical holes are twins of previously drilled holes and were drilled in Q2 2016, sampled and assayed in Q3 2016.

Geotechnical holes were drilled in Q2 2016, sampled and assayed in Q3 2016.

Assays are reported true values without top cutting

Reported intervals are greater than 1.0 g/t Au and greater than 1 metre length or GxT greater than 4.0 (Au grade multiplied by interval length)

Maximum internal waste 4 metres

True widths for mineralized zones are about 60% to 90% of stated down hole interval

This information should be read together with our news release of November 7th, 2016.

Boris Kotlyar, a Certified Professional Geologist, is Centerra's qualified person for the purpose of National Instrument 43-101

Tables are current as of September 30, 2016.