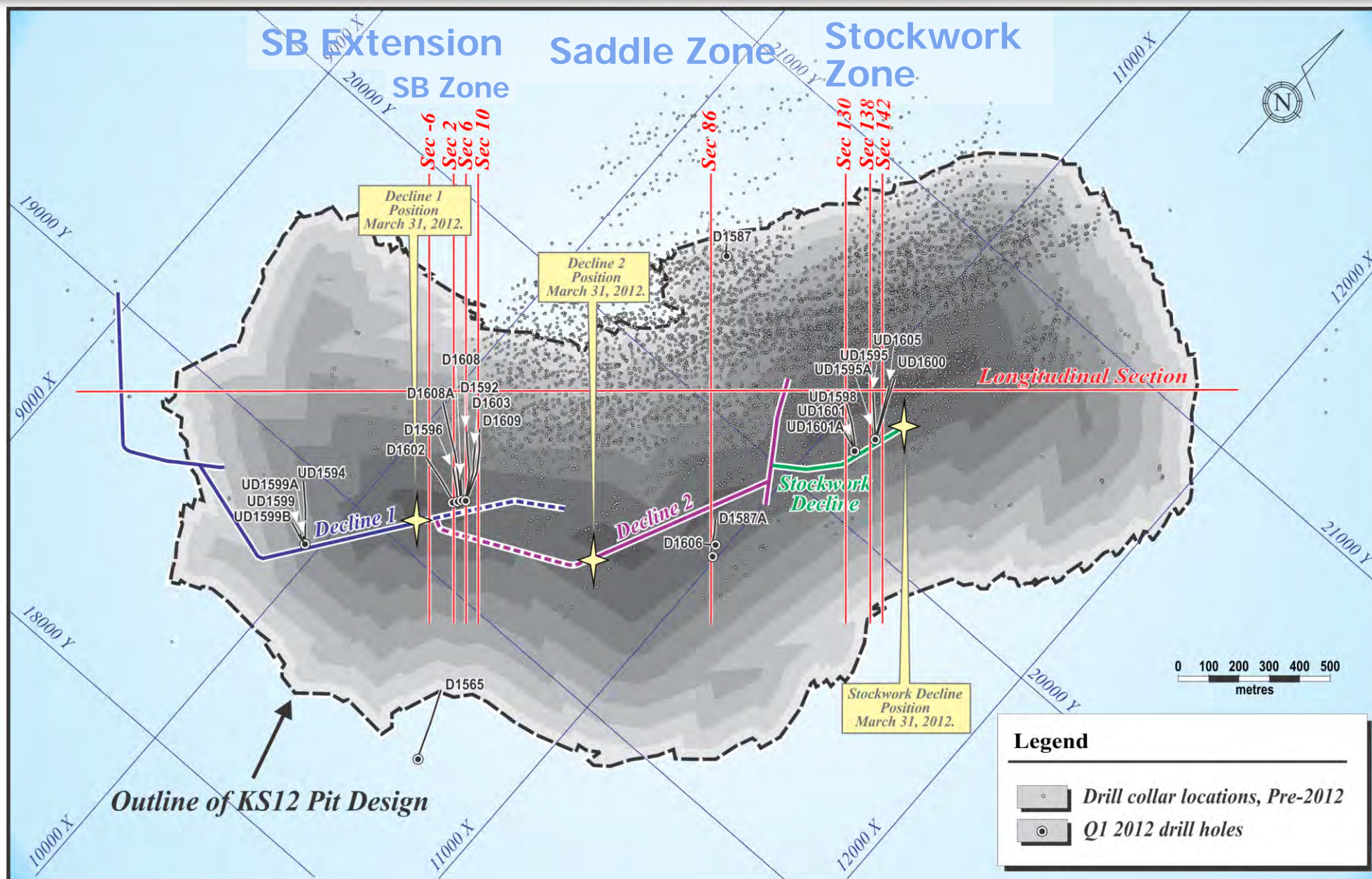




# Central Pit – Drillhole Location Plan Map

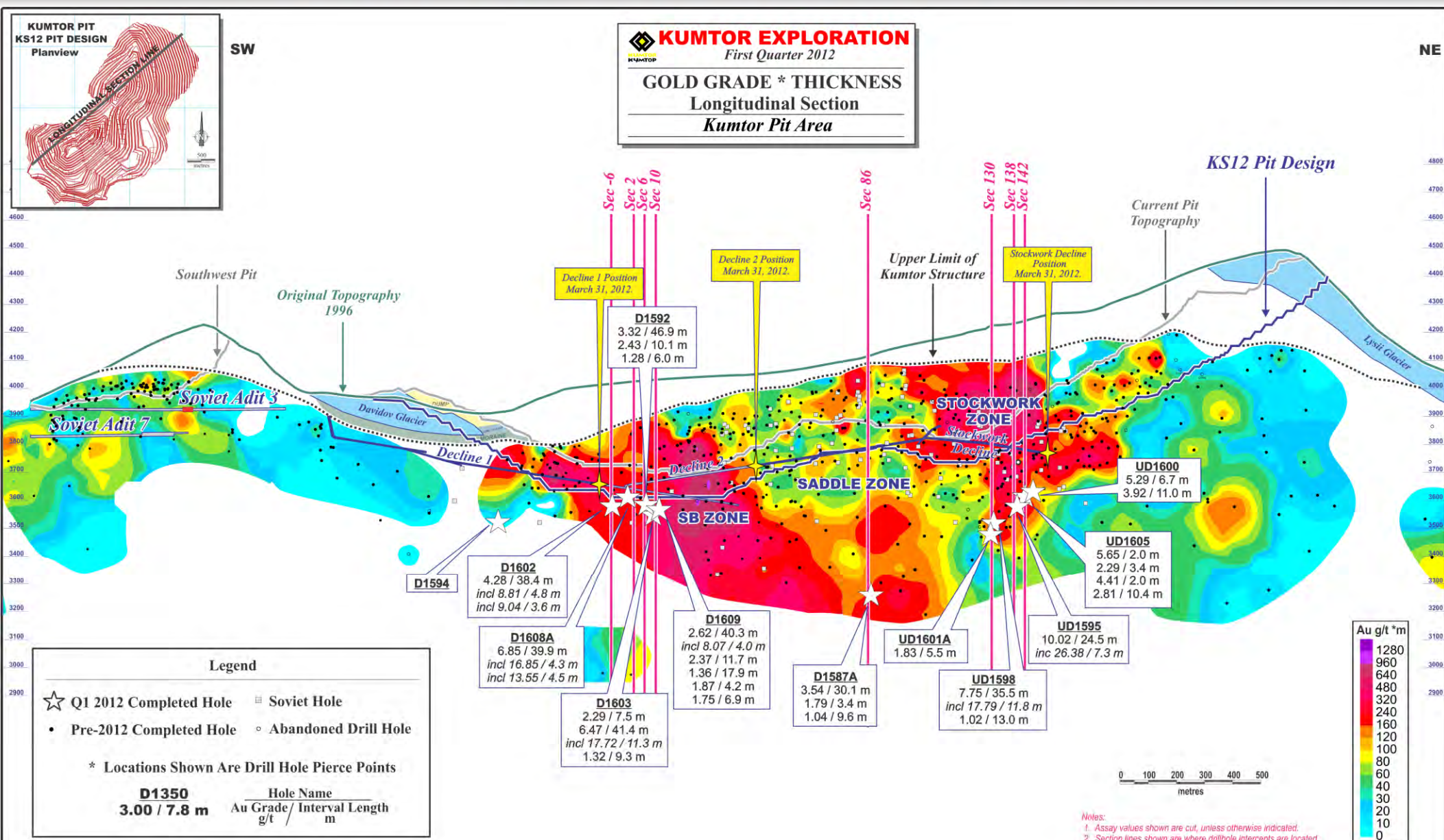


This information should be read together with our news release of May 15, 2012.

David A. Groves, a Certified Professional Geologist, is Centerra's qualified person for the purpose of National Instrument 43-101.



# Central Pit – Longitudinal Section

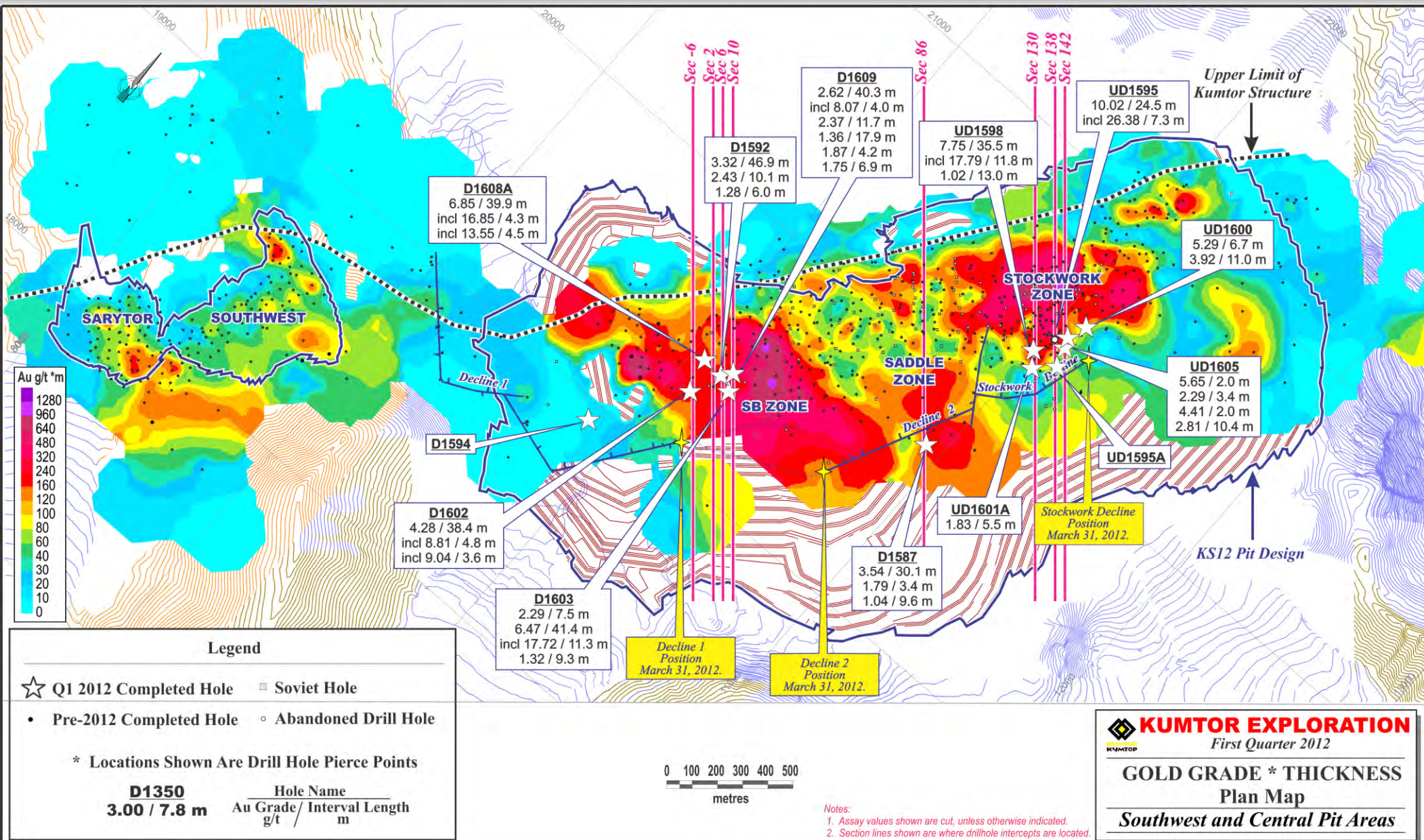


This information should be read together with our news release of May 15, 2012.

David A. Groves, a Certified Professional Geologist, is Centerra's qualified person for the purpose of National Instrument 43-101.



# Central Pit – Plan Map

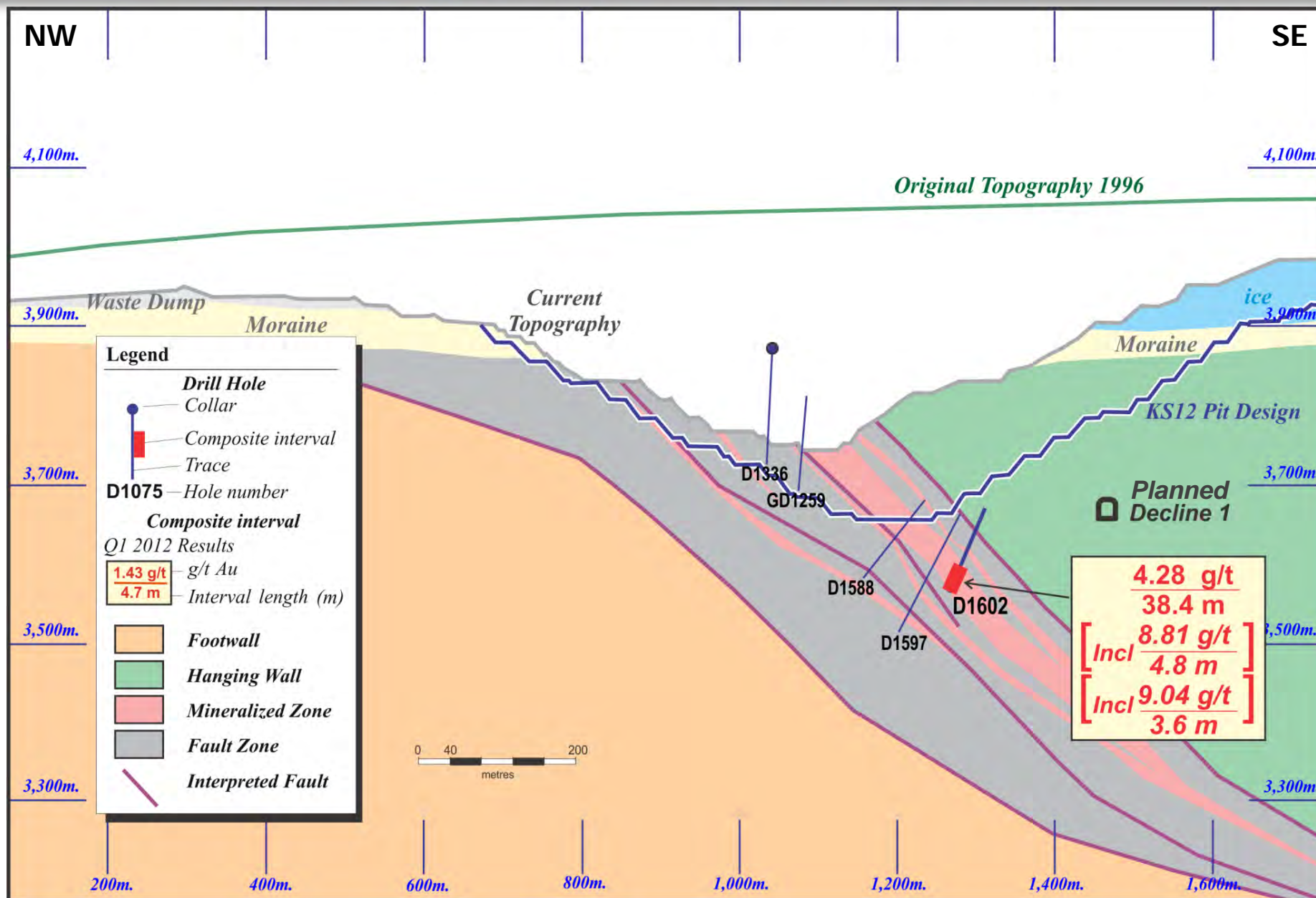


This information should be read together with our news release of May 15, 2012.

David A. Groves, a Certified Professional Geologist, is Centerra's qualified person for the purpose of National Instrument 43-101.



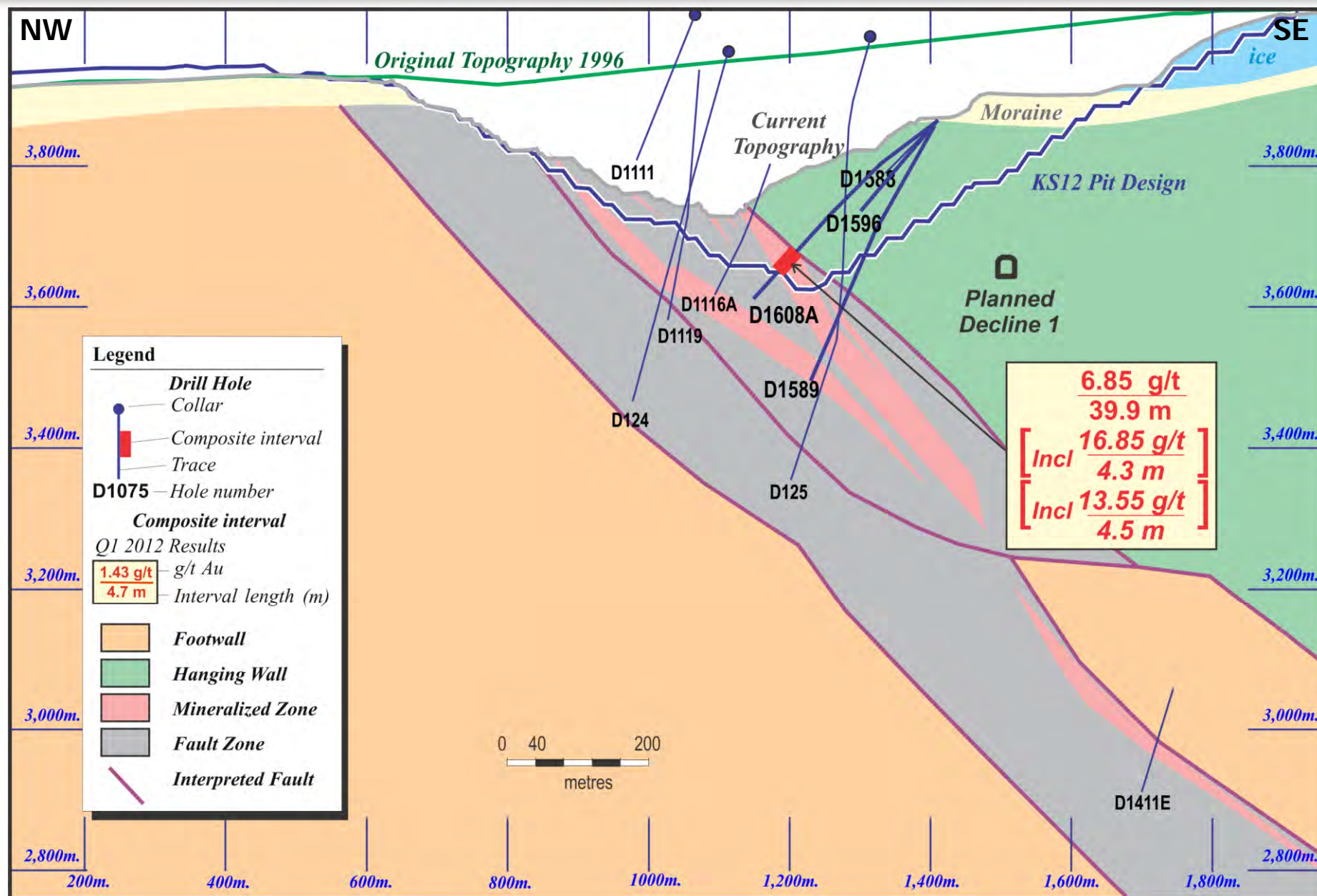
# Central Pit – Section -6



This information should be read together with our news release of May 15, 2012.

David A. Groves, a Certified Professional Geologist, is Centerra's qualified person for the purpose of National Instrument 43-101.

# Central Pit – Section 2

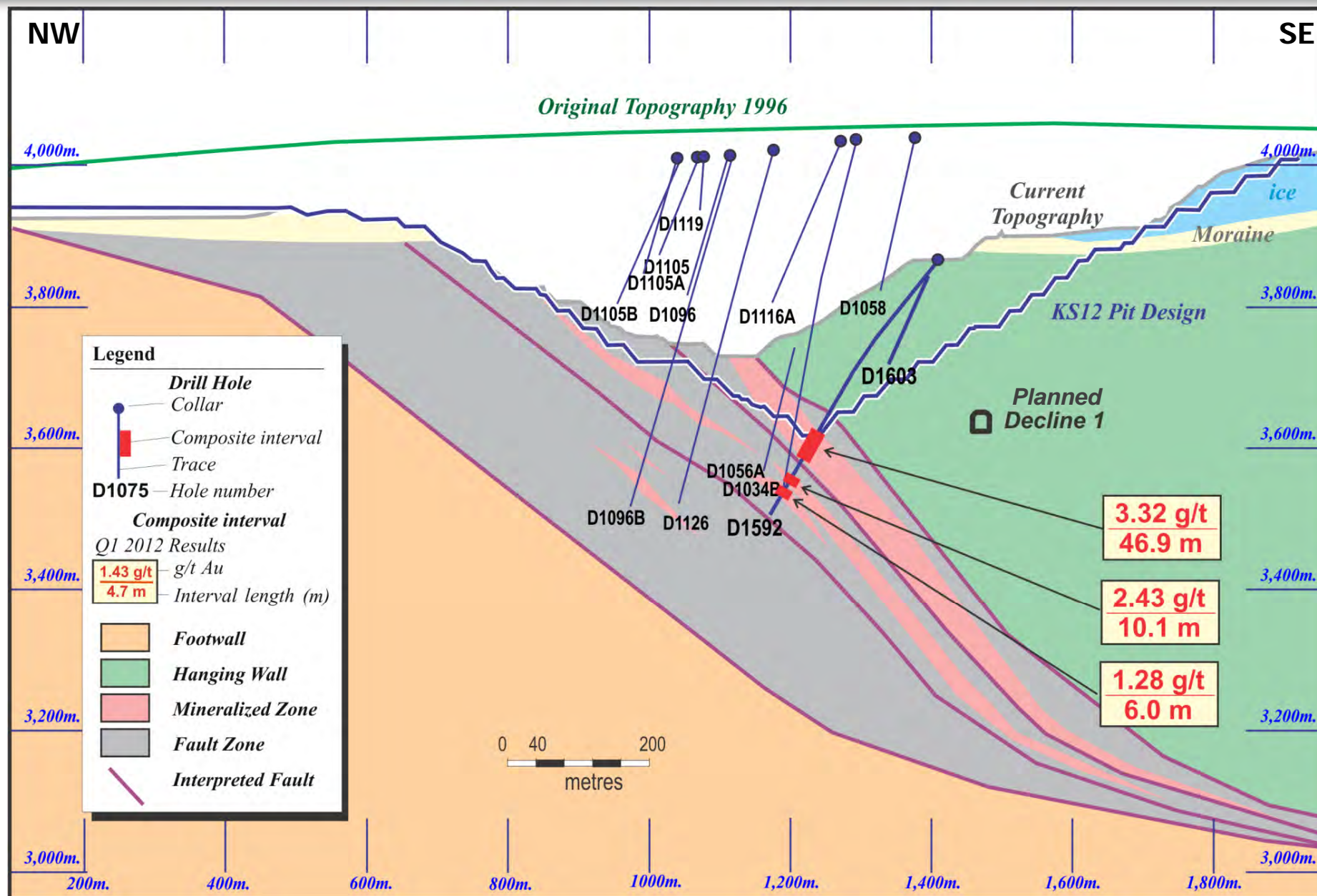


This information should be read together with our news release of May 15, 2012.

David A. Groves, a Certified Professional Geologist, is Centerra's qualified person for the purpose of National Instrument 43-101.



# Central Pit – Section 6

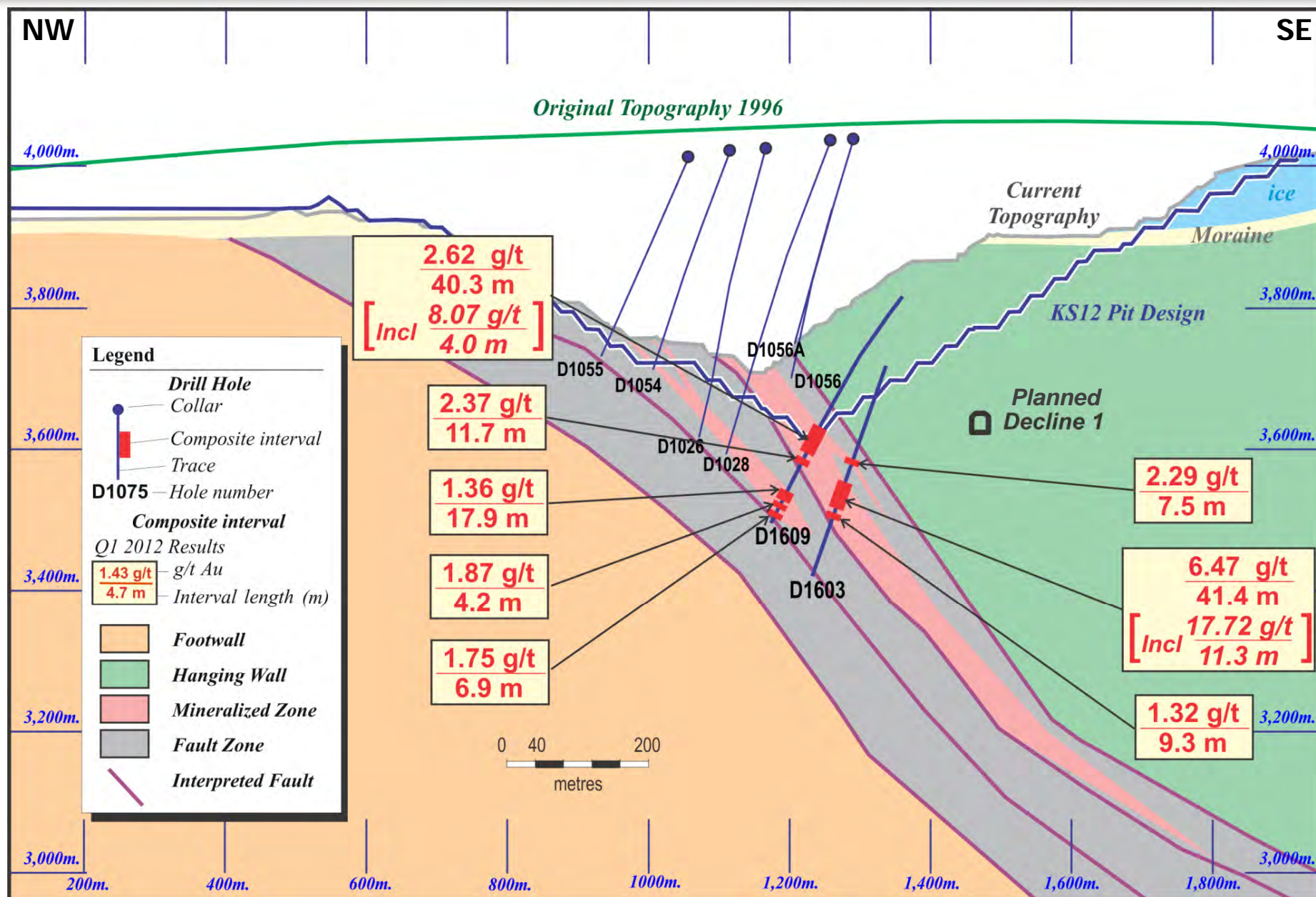


This information should be read together with our news release of May 15, 2012.

David A. Groves, a Certified Professional Geologist, is Centerra's qualified person for the purpose of National Instrument 43-101.



# Central Pit – Section 10

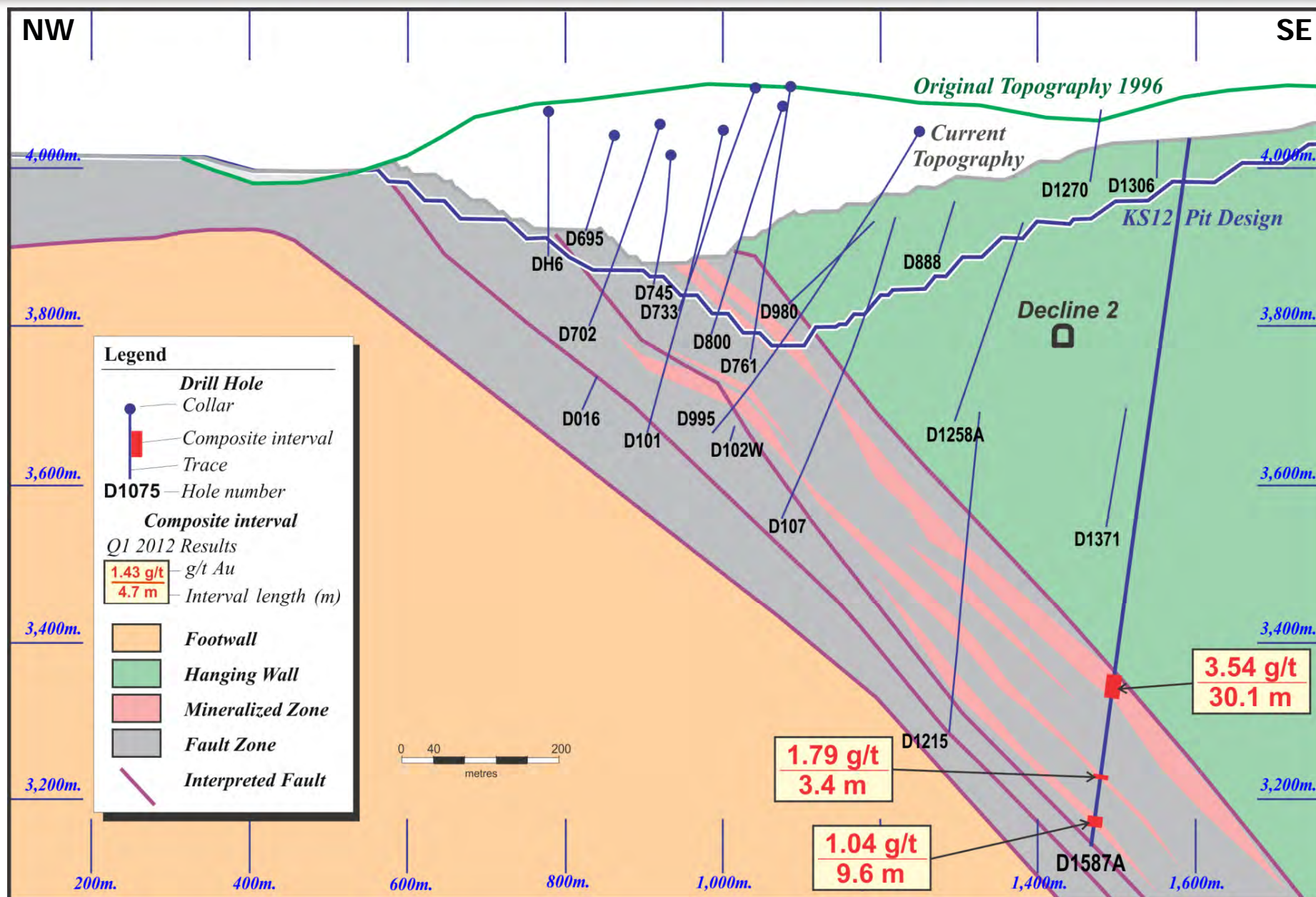


This information should be read together with our news release of May 15, 2012.

David A. Groves, a Certified Professional Geologist, is Centerra's qualified person for the purpose of National Instrument 43-101.



# Central Pit – Section 86

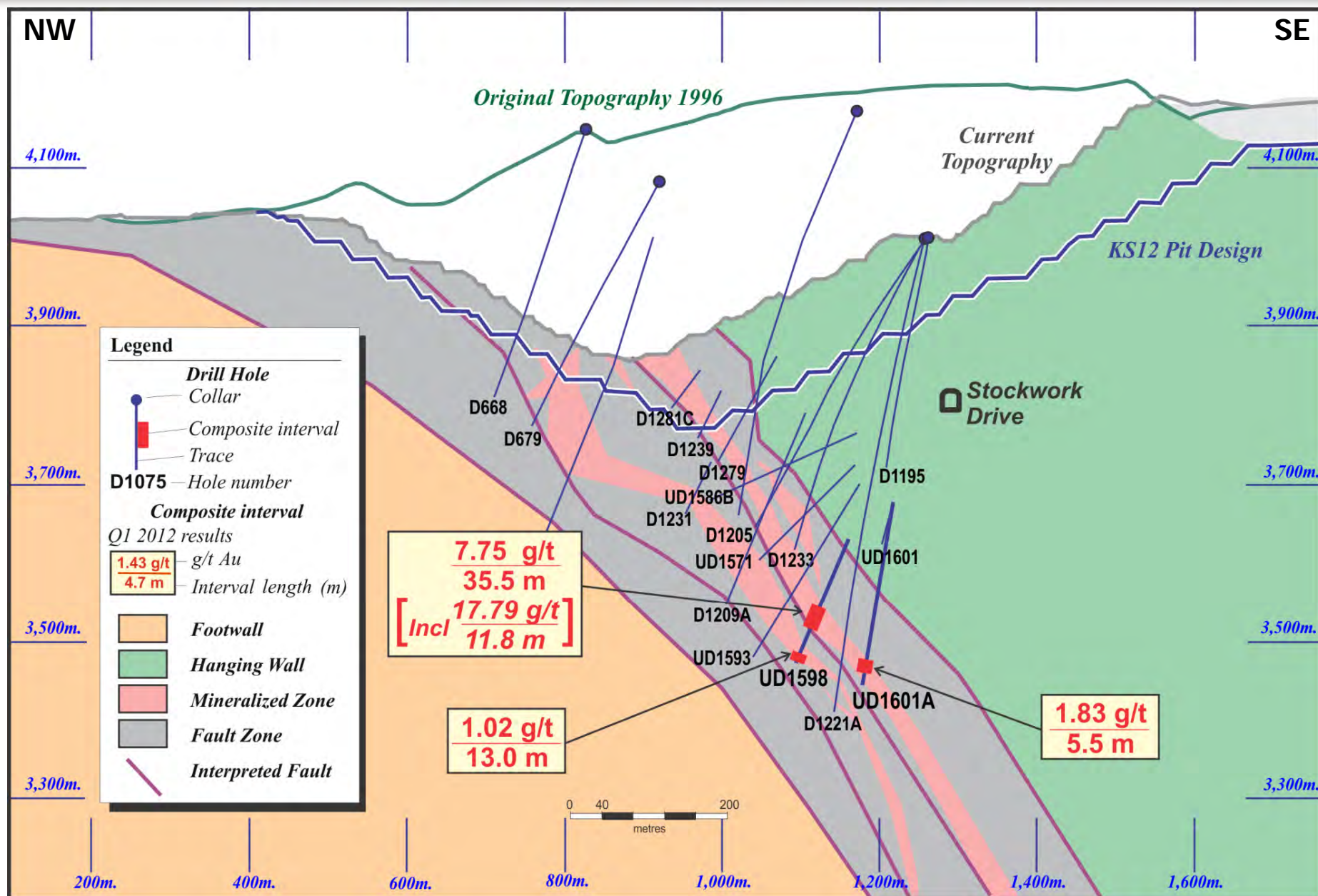


This information should be read together with our news release of May 15, 2012.

David A. Groves, a Certified Professional Geologist, is Centerra's qualified person for the purpose of National Instrument 43-101.



# Central Pit – Section 130

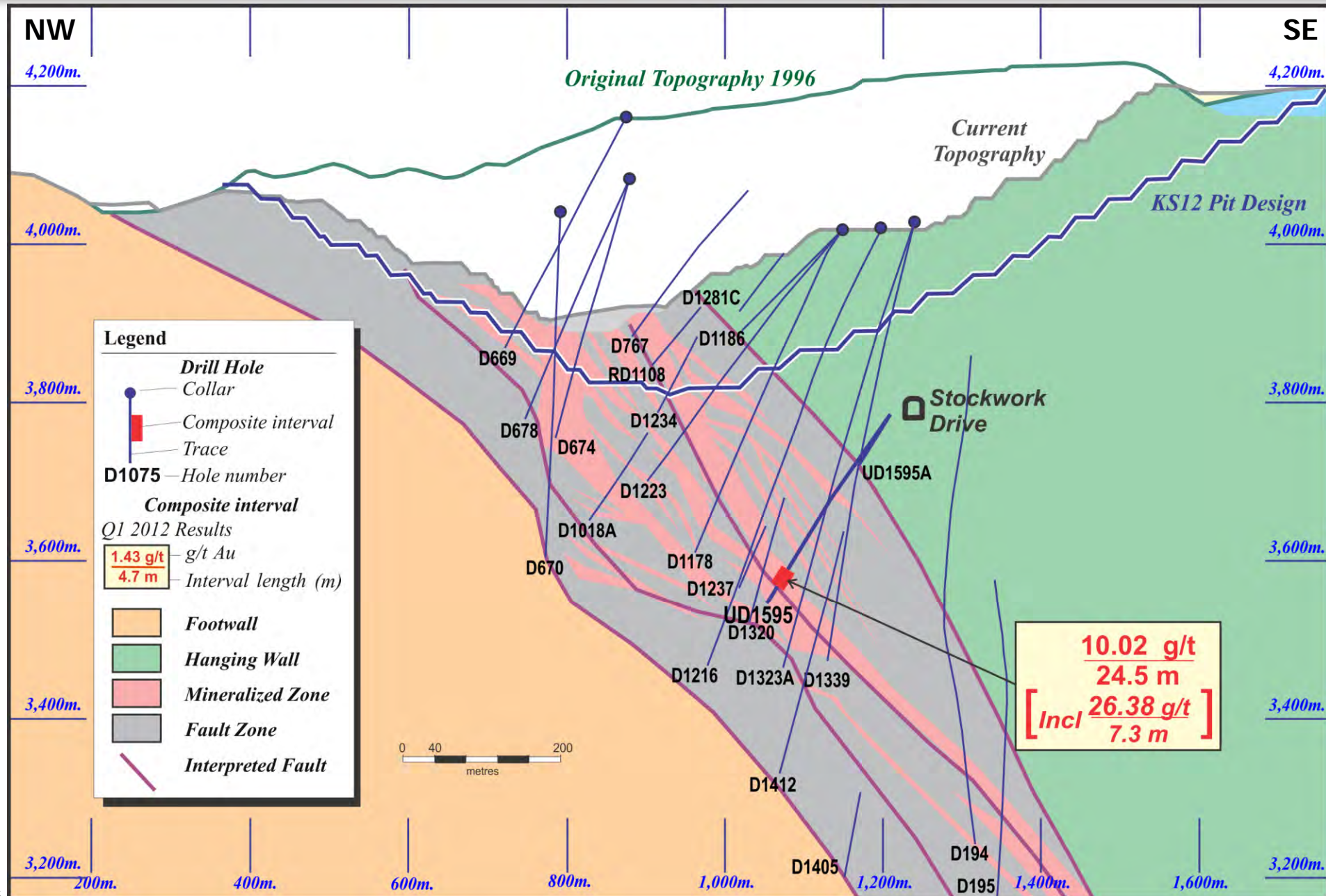


This information should be read together with our news release of May 15, 2012.

David A. Groves, a Certified Professional Geologist, is Centerra's qualified person for the purpose of National Instrument 43-101.

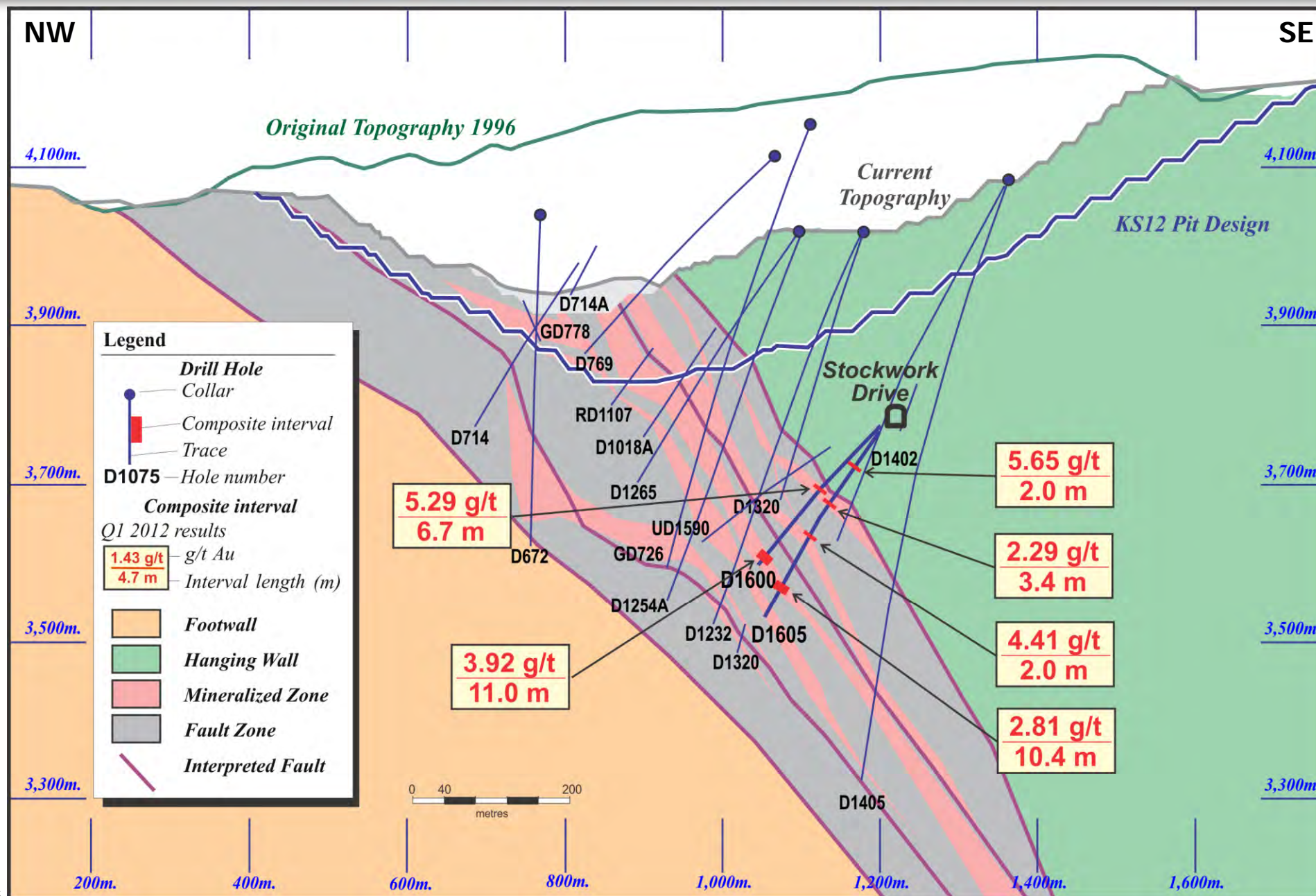


# Central Pit – Section 138



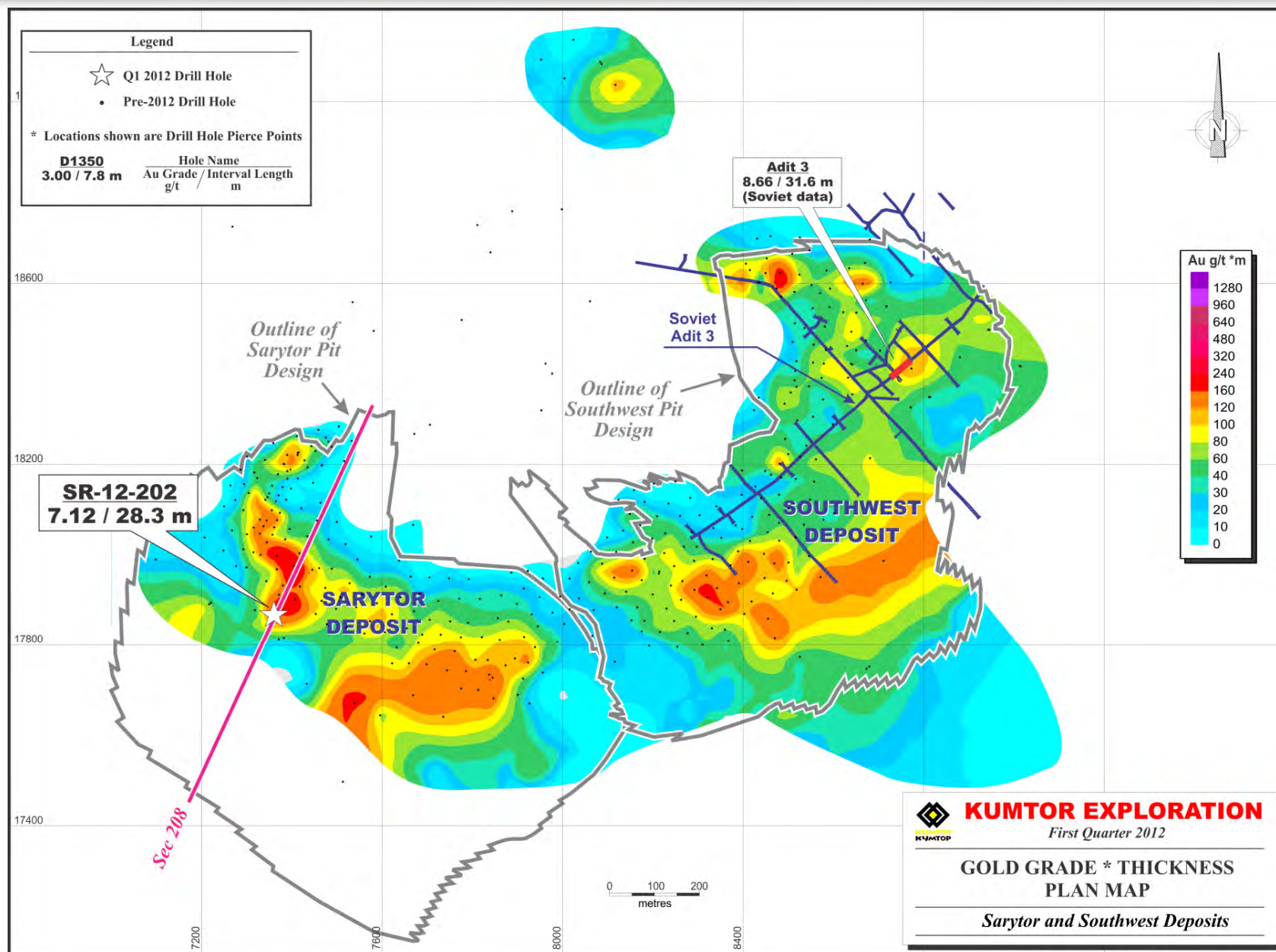


# Central Pit – Section 142





# Sarytor & Southwest Deposits – Plan Map

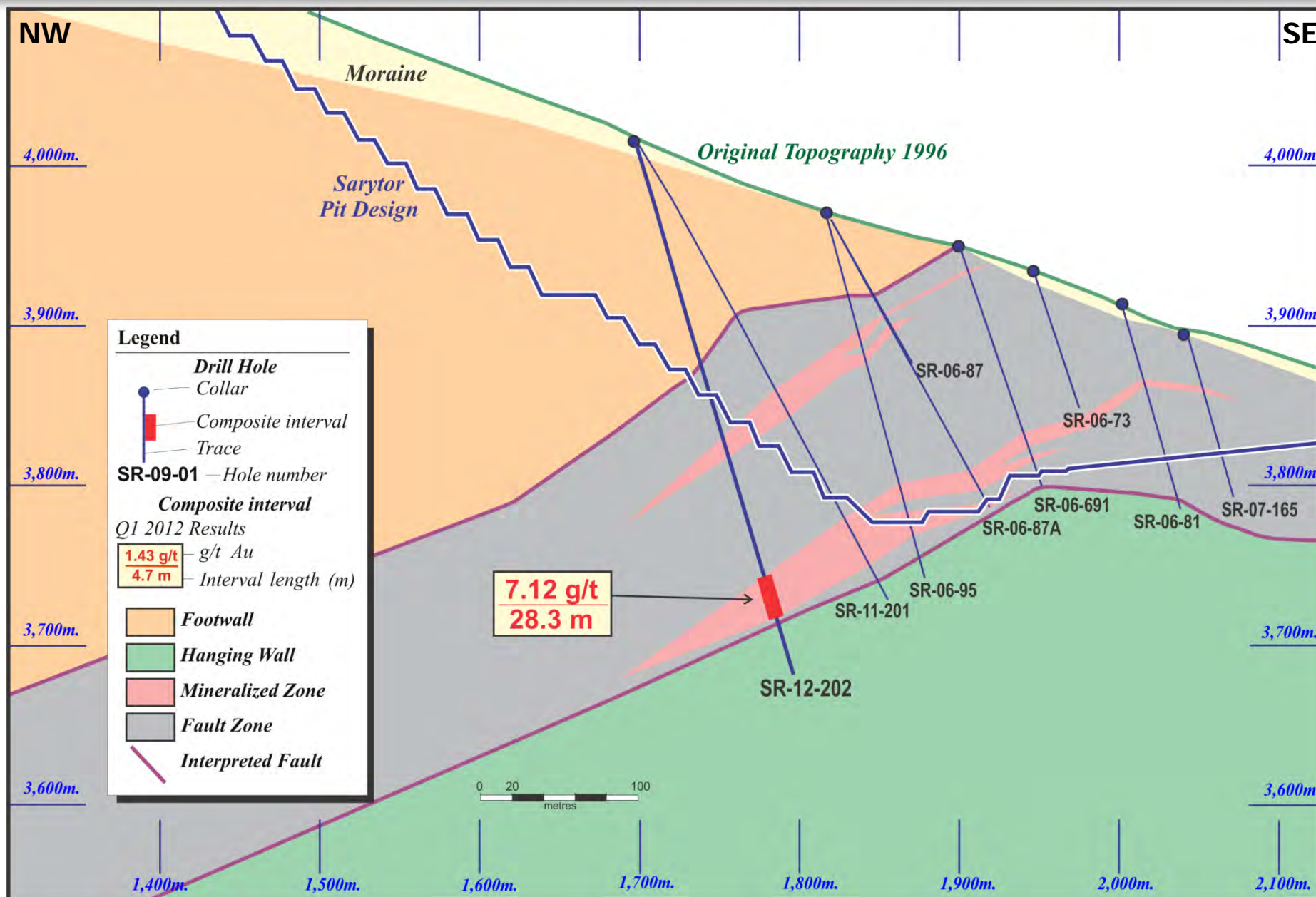


This information should be read together with our news release of May 15, 2012.

David A. Groves, a Certified Professional Geologist, is Centerra's qualified person for the purpose of National Instrument 43-101.



# Sarytor – Section 208



This information should be read together with our news release of May 15, 2012.

David A. Groves, a Certified Professional Geologist, is Centerra's qualified person for the purpose of National Instrument 43-101.





# Centerra Gold Inc. - 2012 Kumtor Project Drilling Results

## Central Pit

Period January 1st, 2012 to March 31st, 2012

Page 1 of 1

Drill Hole	Location	Drill Section	From (m)	To (m)	Core Length (m)	Au (g/t)
D1565	Saddle Zone	22	Hole was stopped due to technical difficulties before target was reached			
D1587	Saddle Zone	86	Hole was stopped due to technical difficulties before target was reached			
D1587A	Saddle Zone	86	691.3	721.4	30.1	3.54
			820.6	824.0	3.4	1.79
			871.3	880.9	9.6	1.04
D1592	SB Zone	6	299.6	346.5	46.9	3.32
			375.7	385.8	10.1	2.43
			394.8	400.8	6.0	1.28
D1594	SB Zone	-46	Hole was stopped due to technical difficulties before target was reached			
D1596	SB Zone	2	Hole was stopped due to technical difficulties before target was reached			
D1602	SB Zone	-6	322.6	361.0	38.4	4.28
			<i>includes</i> 327.3	332.1	4.8	8.81
			<i>includes</i> 333.8	337.4	3.6	9.04
D1603	SB Zone	10	307.1	314.6	7.5	2.29
			339.4	380.8	41.4	6.47
			<i>includes</i> 354.7	366.0	11.3	17.72
			385.9	395.2	9.3	1.32
D1606	Saddle Zone	74	Hole was stopped due to technical difficulties before target was reached			
D1608	SB Zone	2	Hole was stopped due to technical difficulties before target was reached			
D1608A	SB Zone	2	274.2	314.1	39.9	6.85
			<i>includes</i> 276.8	281.1	4.3	16.85
			<i>includes</i> 287.4	291.9	4.5	13.55
D1609	SB Zone	10	293.8	334.1	40.3	2.62
			<i>includes</i> 321.5	325.5	4.0	8.07
			341.1	352.8	11.7	2.37
			392.8	410.7	17.9	1.36
			415.7	419.9	4.2	1.87
			428.0	434.9	6.9	1.75

Notes: Significant mineralized intervals are greater than 1.00 g/t Au.  
Individual assays are top cut to 60 g/t Au prior to composite calculation.  
Lower cut-off for higher grade sub-intervals is 7.0 g/t Au.  
True widths for mineralized zones are about 70% to 95% of stated down hole interval.  
This information should be read together with our news release of May 15, 2012.  
David A. Groves, a Certified Professional Geologist, is Centerra's qualified person for the purpose of National Instrument 43-101.  
Tables are current as of March 31st, 2012.





# Centerra Gold Inc. - Kumtor 2012 Drilling Results

Period January 1st, 2012 to March 31st, 2012

Page 1 of 1

Underground - Decline 1 <sup>1</sup>						
Drill Hole	Location	Drill Section	From (m)	To (m)	Core Length (m)	Au (g/t)
UD1594	Decline 1	-46	No Significant Intercepts			
UD1599	Decline 1	-46	Hole was stopped due to technical difficulties before target was reached			
UD1599A	Decline 1	-46	Hole was stopped due to technical difficulties before target was reached			
UD1599B	Decline 1	-46	Hole was stopped due to technical difficulties before target was reached			

Underground - Decline 2 <sup>1</sup>						
Drill Hole	Location	Drill Section	From (m)	To (m)	Core Length (m)	Au (g/t)
UD1595	Decline 2	138	233.8	258.3	24.50	10.02
			<i>includes</i> 247.0	254.3	7.30	26.38
UD1595A	Decline 2	138	Hole was stopped due to technical difficulties before target was reached			
UD1598	Decline 2	130	279.0	314.5	35.50	7.75
			<i>includes</i> 285.0	296.8	11.80	17.79
			343.6	356.6	13.00	1.02
UD1600	Decline 2	142	123.0	129.7	6.70	5.29
			238.7	249.7	11.00	3.92
UD1601	Decline 2	130	Hole was stopped due to technical difficulties before target was reached			
UD1601A	Decline 2	130	326.0	331.5	5.50	1.83
UD1605	Decline 2	142	73.1	75.1	2.00	5.65
			129.5	132.9	3.40	2.29
			177.0	179.0	2.00	4.41
			252.9	263.3	10.40	2.81

Notes 1 : Significant mineralized intervals are greater than 1.00 g/t Au.  
 Individual assays are top cut to 60 g/t Au prior to composite calculation.  
 Lower cut-off for higher grade sub-intervals is 7.0 g/t Au.  
 True widths for mineralized zones are about 45% to 90% of stated down hole interval.  
 This information should be read together with our news release of May 15, 2012.  
 David A. Groves, a Certified Professional Geologist, is Centerra's qualified person for the purpose of National Instrument 43-101.  
 Tables are current as of March 31st, 2012.

Sarytor Deposit <sup>2</sup>					
Drill Hole	Drill Section	From (m)	To (m)	Core Length (m)	Au (g/t)
SR-12-202	208	281.6	309.9	28.30	7.12

Notes 2: Significant mineralized intervals are greater than 1.00 g/t Au.  
 Individual assays are top cut to 60 g/t Au prior to composite calculation.  
 Lower cut-off for higher grade sub-intervals is 7.0 g/t Au.  
 True widths for mineralized zones are about 70% to 95% of stated down hole interval.  
 This information should be read together with our news release of May 15, 2012.  
 David A. Groves, a Certified Professional Geologist, is Centerra's qualified person for the purpose of National Instrument 43-101.  
 Tables are current as of March 31st, 2012.

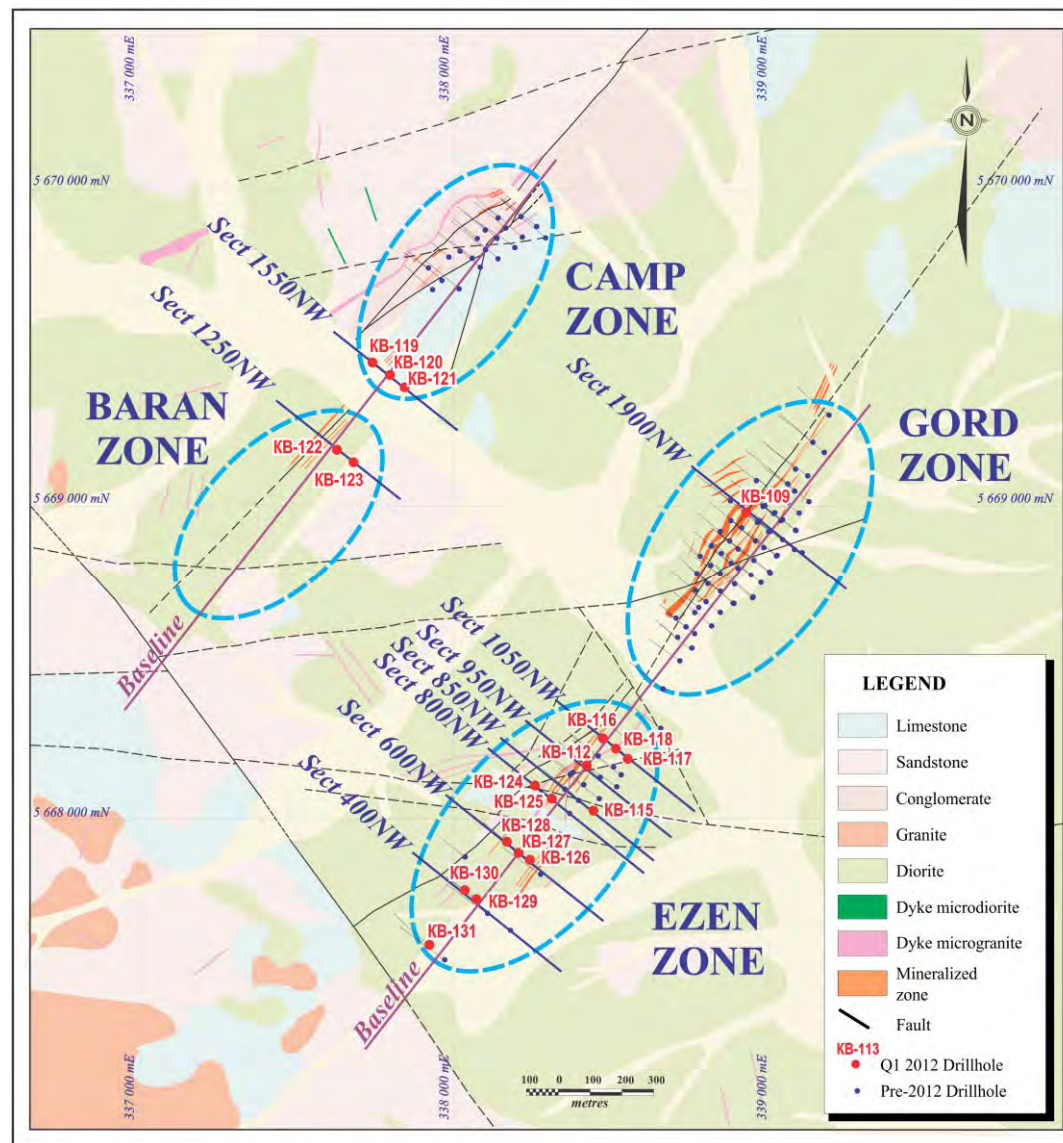
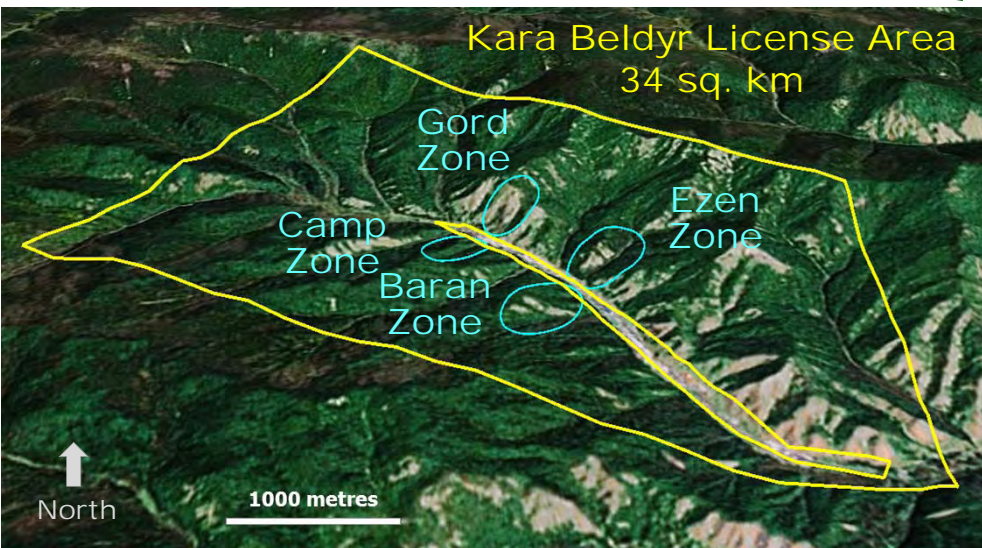


# Drillhole Location Plan Map



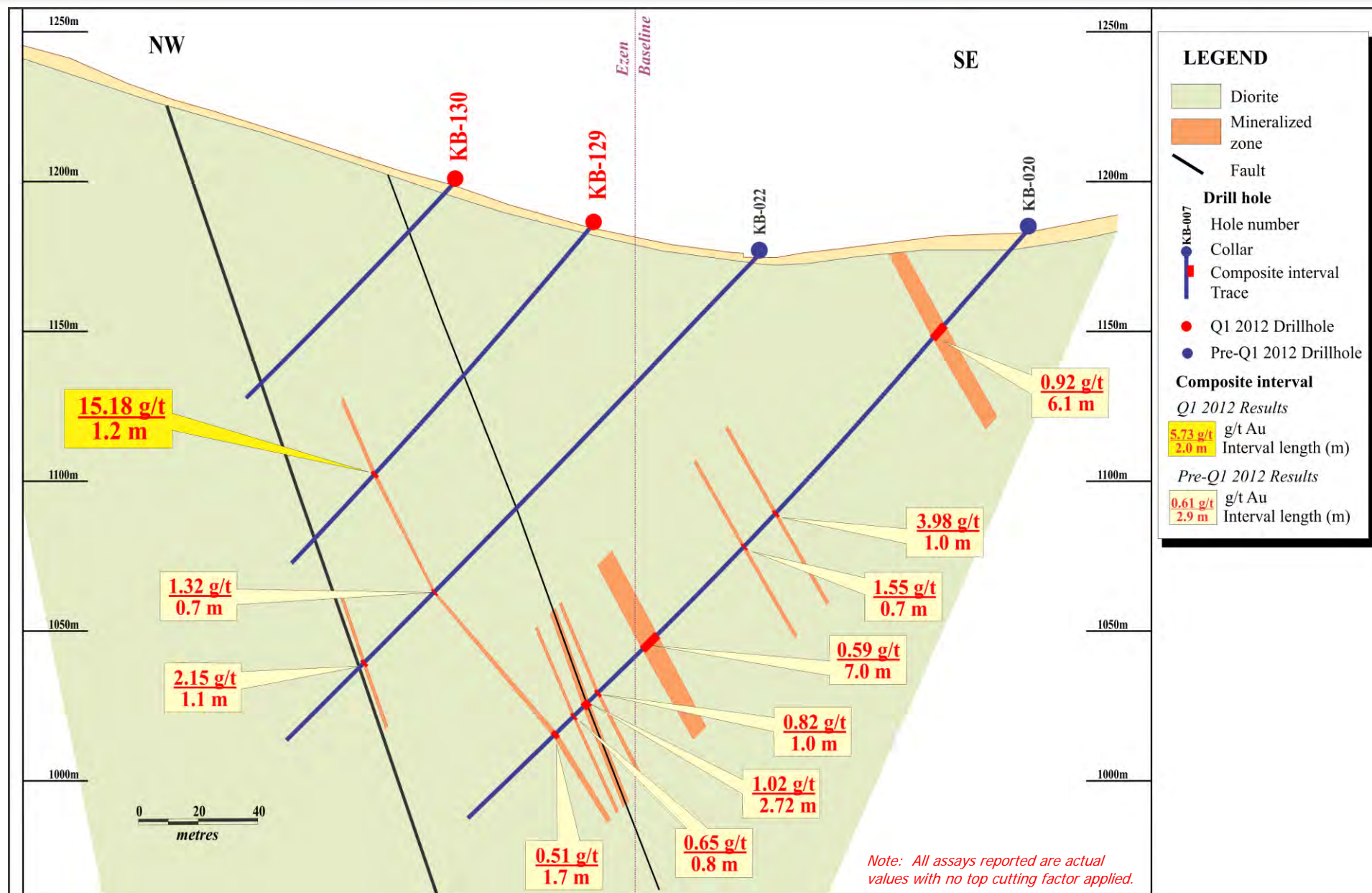
Tyva  
Republic

Kara Beldyr Project





# Ezen Zone, Section 400NW

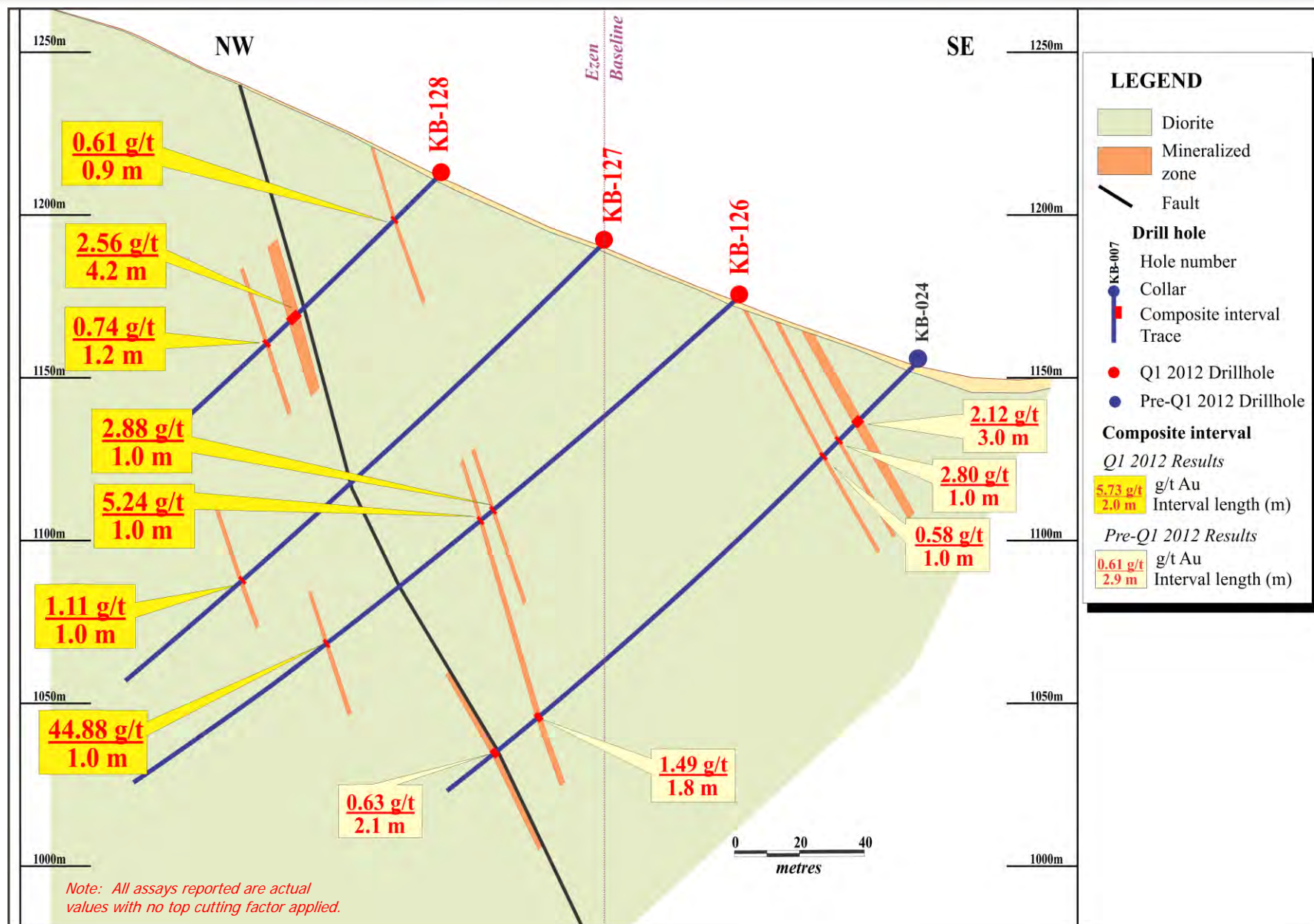


This information should be read together with our news release of May 15, 2012.

David A. Groves, a Certified Professional Geologist, is Centerra's qualified person for the purpose of National Instrument 43-101.



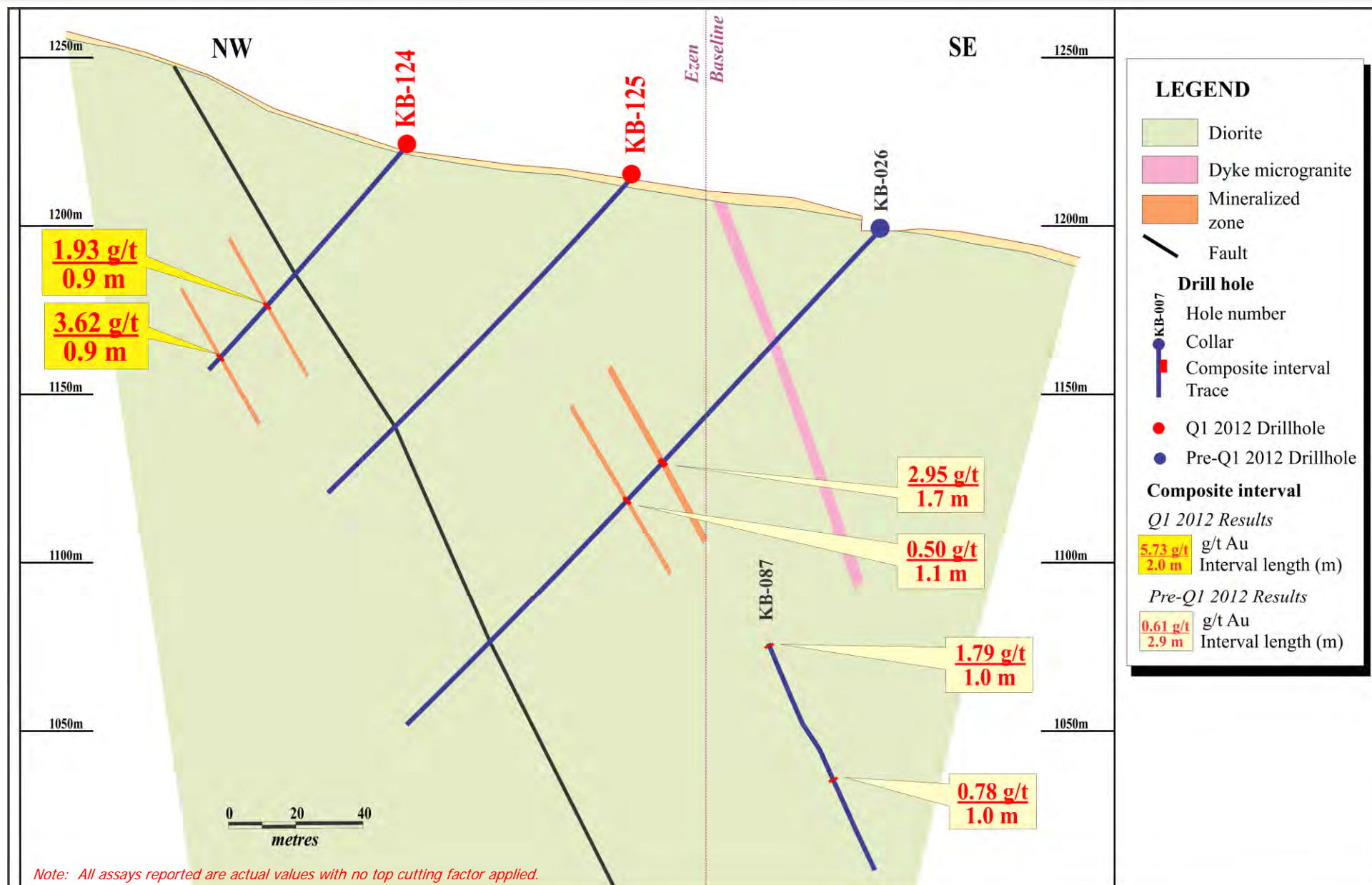
# Ezen Zone, Section 600NW



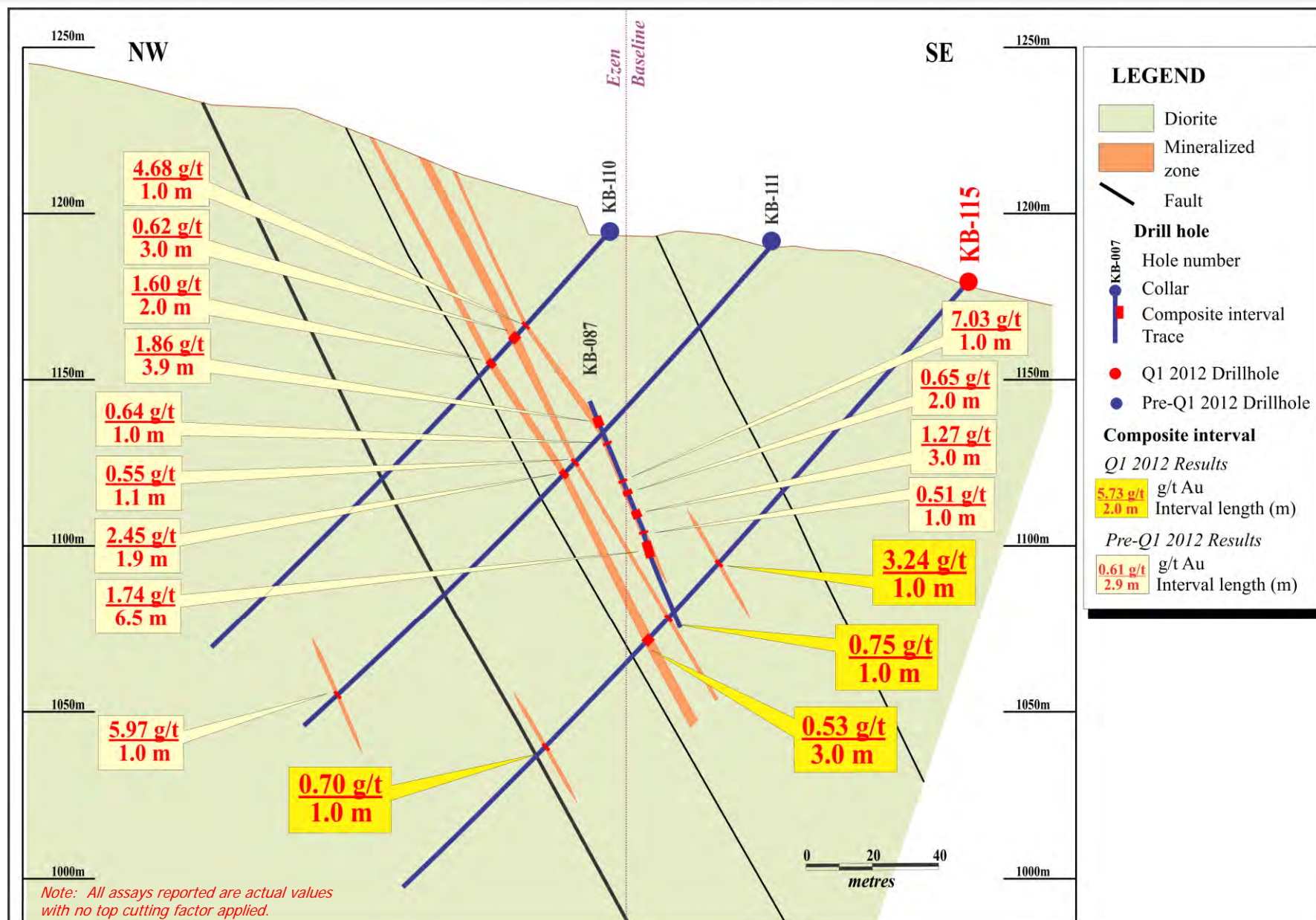
This information should be read together with our news release of May 15, 2012.  
David A. Groves, a Certified Professional Geologist, is Centerra's qualified person for the purpose of National Instrument 43-101.



# Ezen Zone, Section 800NW

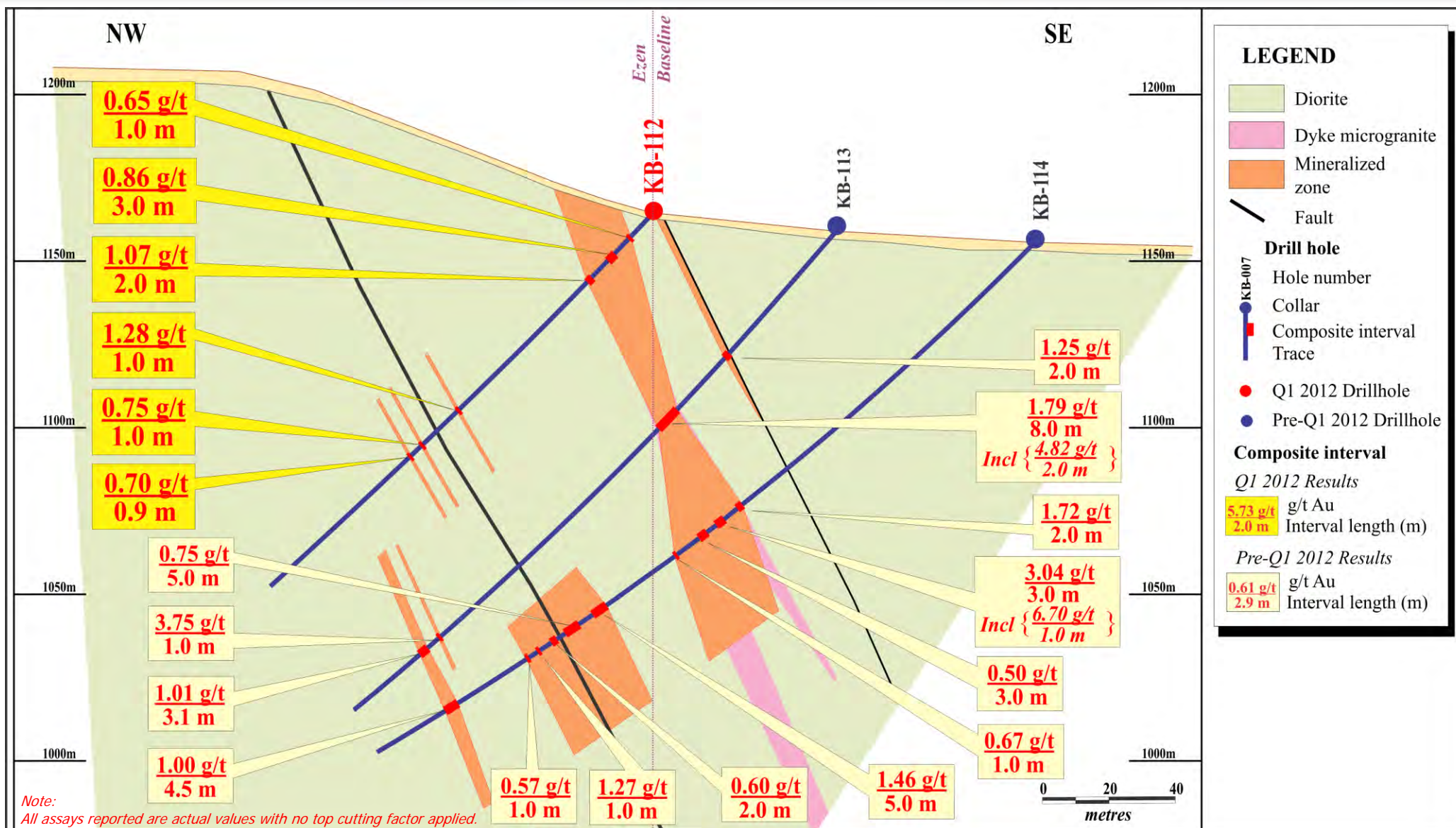


# Ezen Zone, Section 850NW



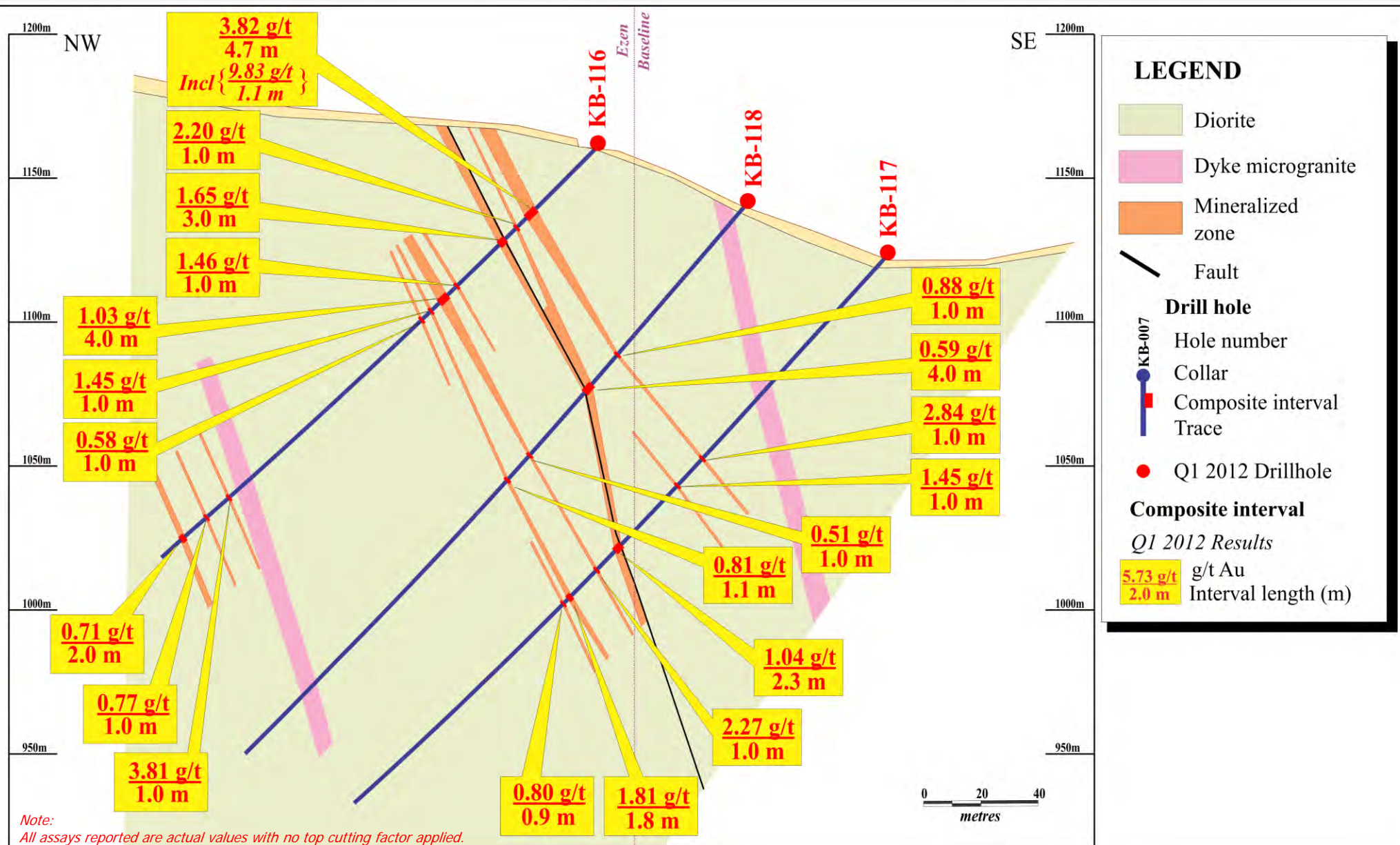


## Ezen Zone, Section 950NW



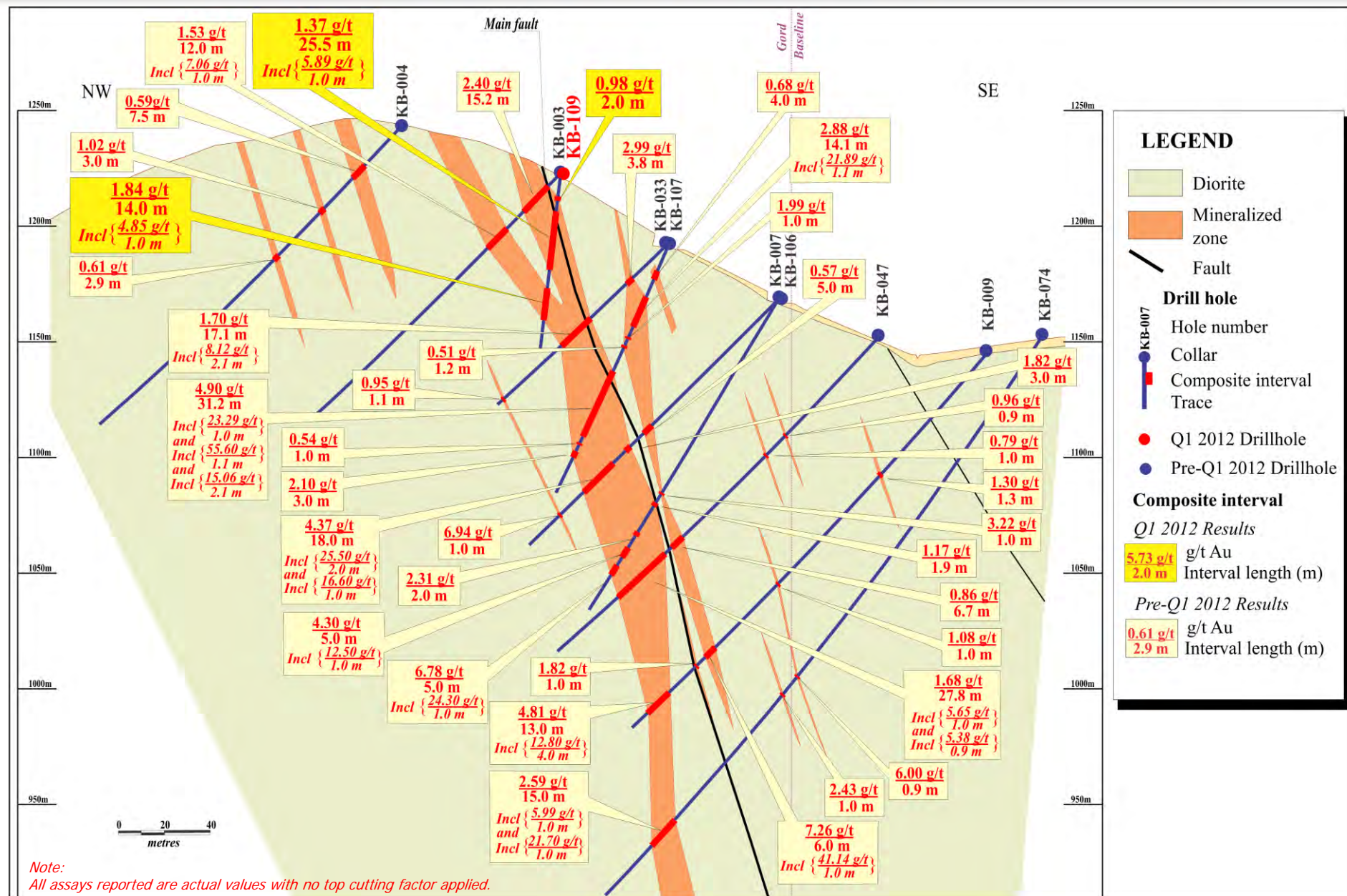


## Ezen Zone, Section 1050NW





# Gord Zone, Section 1900NW

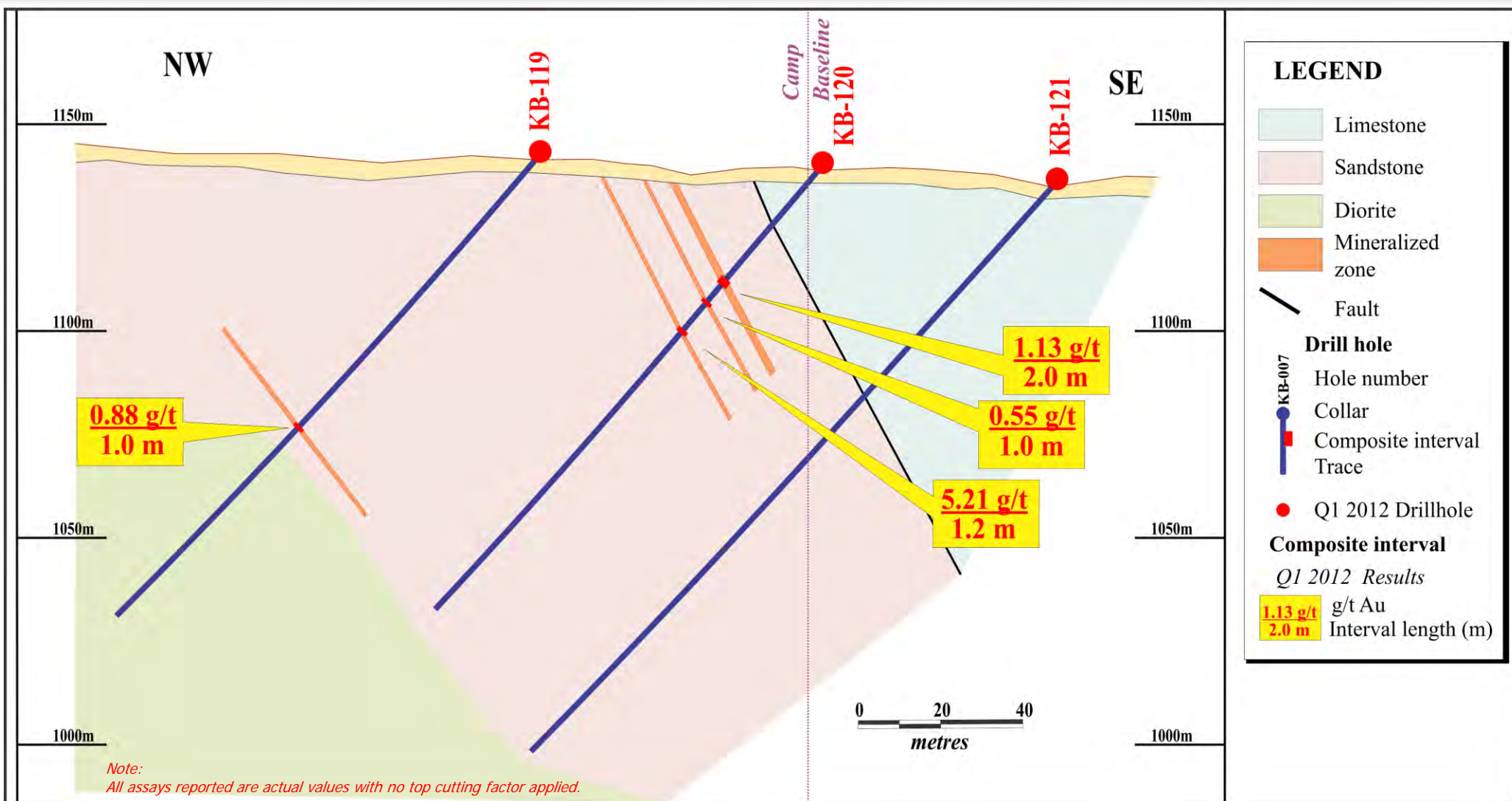


This information should be read together with our news release of May 15, 2012.

David A. Groves, a Certified Professional Geologist, is Centerra's qualified person for the purpose of National Instrument 43-101.

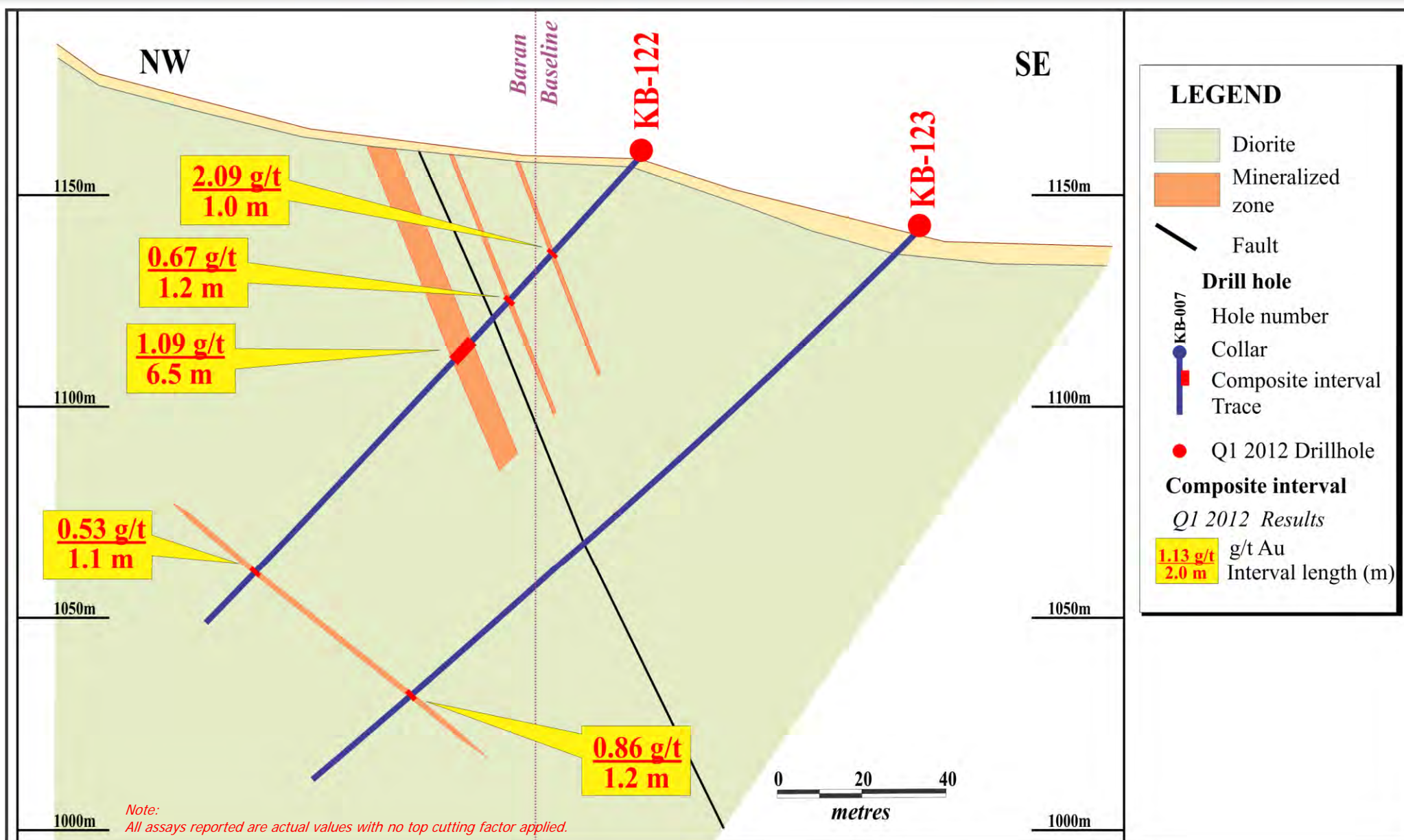


# Camp Zone, Section 1550NW





# Baran Zone, Section 1250NW





## Centerra Gold Inc. - Kara-Beldyr 2012 Drilling Results

Period January 1st, 2012 to March 31st, 2012

Page 1 of 2

Location	Drill Section	Drill Hole	From (m)	To (m)	Core Length (m)	Au (g/t)
Ezen	200NW	KB-131	no significant intercepts			
	400NW	KB-129	108.8	110.0	1.2	15.18
		KB-130	no significant results			
	600NW	KB-126	97.7	98.7	1.0	2.88
			102.7	103.7	1.0	5.24
			163.2	164.2	1.0	44.88
		KB-127	150.0	151.0	1.0	1.11
		KB-128	17.6	18.5	0.9	0.61
			59.0	63.2	4.2	2.56
			72.0	73.2	1.2	0.74
	800NW	KB-124	60.9	61.8	0.9	1.93
			81.6	82.5	0.9	3.62
		KB-125	no significant intercepts			
	850NW	KB-115	109.5	110.5	1.0	3.24
			132.0	133.0	1.0	0.75
			140.0	143.0	3.0	0.53
			185.4	186.4	1.0	0.70
	950NW	KB-112	8.0	9.0	1.0	0.65
			15.0	18.0	3.0	0.86
			24.9	26.9	2.0	1.07
			81.0	82.0	1.0	1.28
			96.1	97.1	1.0	0.75
			101.1	102.0	0.9	0.70
	1050NW	KB-116	includes 29.1	33.8	4.7	3.82
			32.7	33.8	1.1	9.83
			38.0	39.0	1.0	2.20
			44.0	47.0	3.0	1.65
			67.0	68.0	1.0	1.46
			72.0	76.0	4.0	1.03
			79.5	80.5	1.0	1.45
			84.0	85.0	1.0	0.58
			175.1	176.1	1.0	3.81
		KB-117	185.5	186.5	1.0	0.77
			196.0	198.0	2.0	0.71
			94.2	95.2	1.0	2.84
			107.0	108.0	1.0	1.45
			135.7	138.0	2.3	1.04
			147.6	148.6	1.0	2.27
			160.5	162.3	1.8	1.81
			164.1	165.0	0.9	0.80
		KB-118	67.8	68.8	1.0	0.88
			81.8	85.8	4.0	0.59
			114.2	115.2	1.0	0.51
			125.7	126.8	1.1	0.81

Notes: All assays reported are actual values with no top cutting factor applied

Significant mineralized intervals are greater than 0.5 g/t

True widths for mineralized zones are about 70% to 90% of the stated down hole interval

This information should be read together with our news release of May 15, 2012.

David A. Groves, a Certified Professional Geologist, is Centerra's qualified person for the purpose of National Instrument 43-101

Tables are current as of March 31st, 2012.





# Centerra Gold Inc. - Kara-Beldyr 2012 Drilling Results

Period January 1st, 2012 to March 31st, 2012

Page 2 of 2

Location	Drill Section	Drill Hole	From (m)	To (m)	Core Length (m)	Au (g/t)
Gord	1900NW	KB-109	8.0	10.0	2.0	0.98
			14.5	40.0	25.5	1.37
			<i>includes</i> 29.4	30.4	1.0	5.89
			48.0	62.0	14.0	1.84
			<i>includes</i> 54.0	55.0	1.0	4.85
Camp	1550NW	KB-119	86.0	87.0	1.0	0.88
		KB-120	34.4	36.4	2.0	1.13
			41.4	42.4	1.0	0.55
			50.4	51.6	1.2	5.21
		KB-121	no significant intercepts			
Baran	1250NW	KB-122	29.9	30.9	1.0	2.09
			44.9	46.1	1.2	0.67
			58.4	64.9	6.5	1.09
			132.8	133.9	1.1	0.53
		KB-123	160.8	162.0	1.2	0.86

Notes: All assays reported are actual values with no top cutting factor applied

Significant mineralized intervals are greater than 0.5 g/t

True widths for mineralized zones are about 70% to 90% of the stated down hole interval

This information should be read together with our news release of May 15, 2012.

David A. Groves, a Certified Professional Geologist, is Centerra's qualified person for the purpose of National Instrument 43-101

Tables are current as of March 31st, 2012.