

Central Pit

Period April 1st, 2012 to June 30th, 2012

Page 1 of 1

Drill Hole	Location	Drill Section	From (m)	To (m)	Core Length (m)	Au (g/t)
D1613	SB Extension	-2	Hole was stopped due to technical difficulties before target was reached			
D1614	SB Extension	6	412.0	426.5	14.5	5.43
			<i>includes</i> 412.0	415.0	3.0	11.06
D1619	SB Extension	-2	169.4	176.8	7.4	3.47
			180.8	186.4	5.6	3.38
			190.2	194.5	4.3	1.32
			378.4	384.0	5.6	1.40
D1620	SB Extension	-10	161.5	201.4	39.9	7.92
			<i>includes</i> 162.2	168.0	5.8	17.47
			<i>includes</i> 179.0	185.5	6.5	18.68
			266.9	269.7	2.8	2.90
D1622	SB Extension	2	317.2	324.0	6.8	1.37
			445.8	462.5	16.7	1.63
D1624	SB Extension	-2	174.5	184.9	10.4	6.11
D1625	SB Extension	-10	205.0	240.0	35.0	6.39
			<i>includes</i> 213.7	217.7	4.0	13.70
D1627	SB Extension	-6	155.8	188.8	33.0	3.17
			201.0	214.6	13.6	1.88
D1632	SB Extension	-2	198.0	240.7	42.7	3.12
D1633	SB Extension	-10	245.5	253.7	8.2	3.83
			266.8	282.4	15.6	2.42
			292.2	333.1	40.9	7.43
			<i>includes</i> 296.2	301.5	5.3	15.25
			344.5	349.5	5.0	1.05
D1634	SB Extension	-6	138.5	142.5	4.0	2.54
			241.4	258.0	16.6	3.47
			<i>includes</i> 244.7	248.6	3.9	7.57
			281.6	340.3	58.7	5.05
D1635	SB Extension	6	479.0	492.2	13.2	1.68
D1638	SB Extension	-2	Hole was stopped due to technical difficulties before target was reached			
D1638A	SB Extension	-2	237.9	291.3	53.4	3.55
			333.1	340.5	7.4	1.78
D1639	SB Extension	-6	139.8	143.5	3.7	2.49
D1639A	SB Extension	-6	139.3	143.1	3.8	2.19
			241.1	254.4	13.3	4.89
			265.6	305.5	39.9	3.27
			<i>includes</i> 269.2	281.6	12.4	6.42
D1643	SB Extension	10	344.1	345.6	1.5	5.39
			385.8	391.2	5.4	2.14
			400.7	427.9	27.2	3.98
			<i>includes</i> 408.9	416.7	7.8	10.49
			432.2	449.4	17.2	1.25
D1644	SB Extension	-14	245.7	254.5	8.8	3.54

Notes: Significant mineralized intervals are greater than 1.00 g/t Au

Individual assays are top cut to 60 g/t Au prior to composite calculation

Lower cut-off for higher grade sub-intervals is 7.0 g/t Au

True widths for mineralized zones are from 50% to 95% of stated down hole interval

This information should be read together with our news release of August 1st, 2012.

David A. Groves, a Certified Professional Geologist, is Centerra's qualified person for the purpose of National Instrument 43-101

Tables are current as of June 30th, 2012.



Centerra Gold Inc. - Kumtor 2012 Drilling Results

Underground

Period April 1st, 2012 to June 30th, 2012

Page 1 of 1

Underground - Decline 1

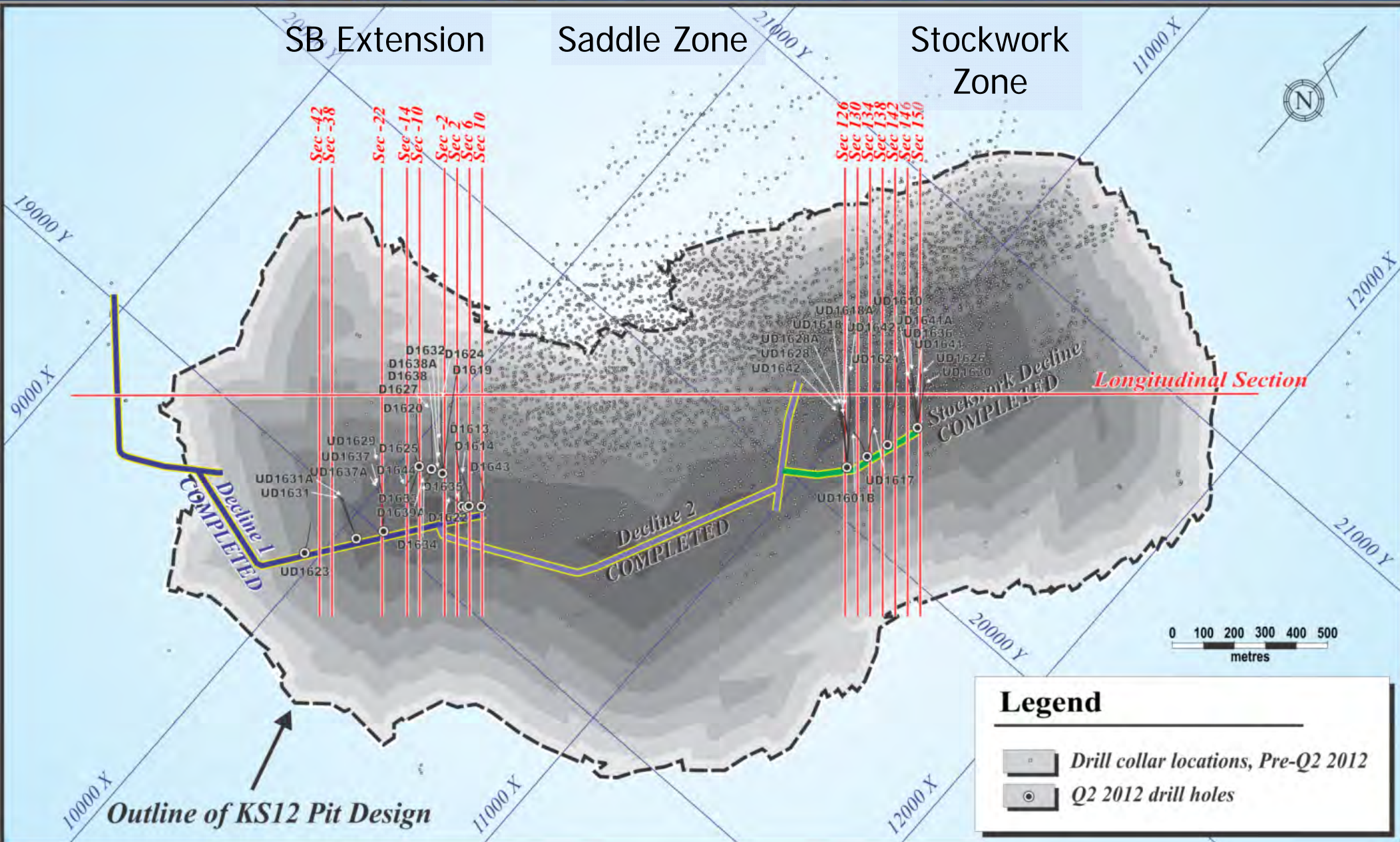
Drill Hole	Drill Section	From (m)	To (m)	Core Length (m)	Au (g/t)
GD1616A	-2	269.1	290.1	21.0	11.38
		<i>includes</i> 269.1	274.6	5.5	23.99
		297.1	304.3	7.2	5.42
		334.5	338.0	3.5	2.18
UD1623	-42	Hole was stopped due to technical difficulties before target was reached			
UD1629	-22	200.0	209.0	9.0	1.98
		232.8	236.8	4.0	2.75
UD1631	-38	Hole was stopped due to technical difficulties before target was reached			
UD1631A	-38	Hole was stopped due to technical difficulties before target was reached			
UD1637	-22	125.8	128.8	3.0	5.44
		145.1	147.7	2.6	6.11
		158.7	164.4	5.7	2.83
		174.5	178.9	4.4	2.75
		202.3	205.0	2.7	2.02
UD1637A	-22	Hole abandoned before target reached			

Underground - Decline 2

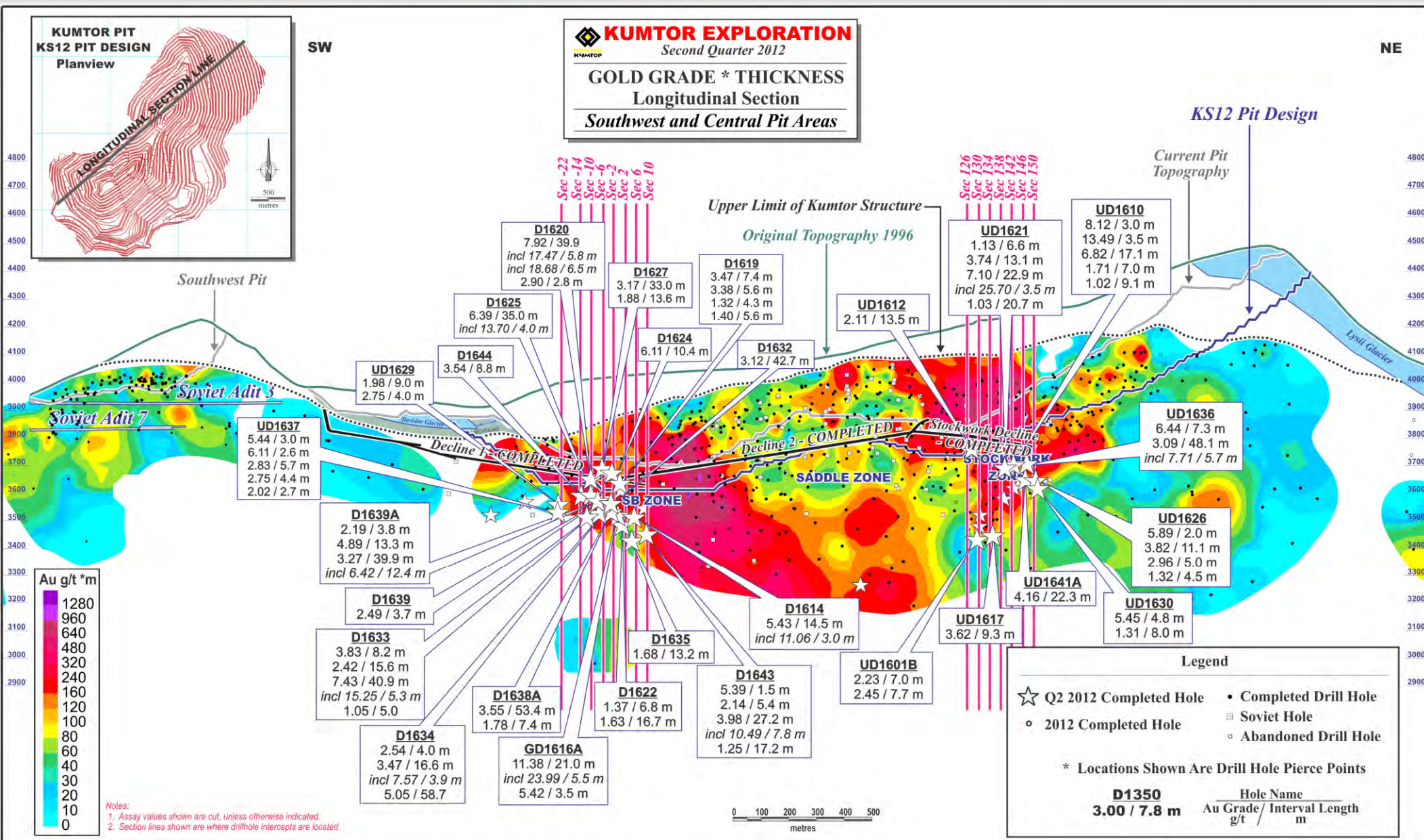
Drill Hole	Drill Section	From (m)	To (m)	Core Length (m)	Au (g/t)
UD1601B	130	326.7	333.7	7.0	2.23
		348.1	355.8	7.7	2.45
UD1610	142	140.9	143.9	3.0	8.12
		205.2	208.7	3.5	13.49
		230.0	247.1	17.1	6.82
		263.0	270.0	7.0	1.71
		283.0	292.1	9.1	1.02
UD1612	126	274.0	287.5	13.5	2.11
UD1617	134	332.0	341.3	9.3	3.62
UD1618	126	Hole was stopped due to technical difficulties before target was reached			
UD1618A	126	Hole was stopped due to technical difficulties before target was reached			
UD1621	138	163.9	170.5	6.6	1.13
		191.1	204.2	13.1	3.74
		212.2	235.1	22.9	7.10
		<i>includes</i> 223.1	226.6	3.5	25.70
		254.5	275.2	20.7	1.03
UD1626	150	108.7	110.7	2.0	5.89
		177.7	188.8	11.1	3.82
		195.4	200.4	5.0	2.96
		208.0	212.5	4.5	1.32
UD1628	126	Hole was stopped due to technical difficulties before target was reached			
UD1628A	126	Hole was stopped due to technical difficulties before target was reached			
UD1630	150	192.1	196.9	4.8	5.45
		212.0	220.0	8.0	1.31
UD1636	146	74.6	81.9	7.3	6.44
		161.4	209.5	48.1	3.09
		<i>includes</i> 175.0	180.7	5.7	7.71
UD1641	146	Hole was stopped due to technical difficulties before target was reached			
UD1641A	146	175.1	197.4	22.3	4.16
UD1642	122	Hole was stopped due to technical difficulties before target was reached			

Notes: Significant mineralized intervals are greater than 1.00 g/t Au.
Individual assays are top cut to 60 g/t Au prior to composite calculation.
Lower cut-off for higher grade sub-intervals is 7.0 g/t Au.
True widths for mineralized zones are from 50% to 95% of stated down hole interval.
This information should be read together with our news release of August 1st, 2012.
David A. Groves, a Certified Professional Geologist, is Centerra's qualified person for the purpose of National Instrument 43-101.
Tables are current as of June 30th, 2012.

Central Pit Drillhole Location Plan

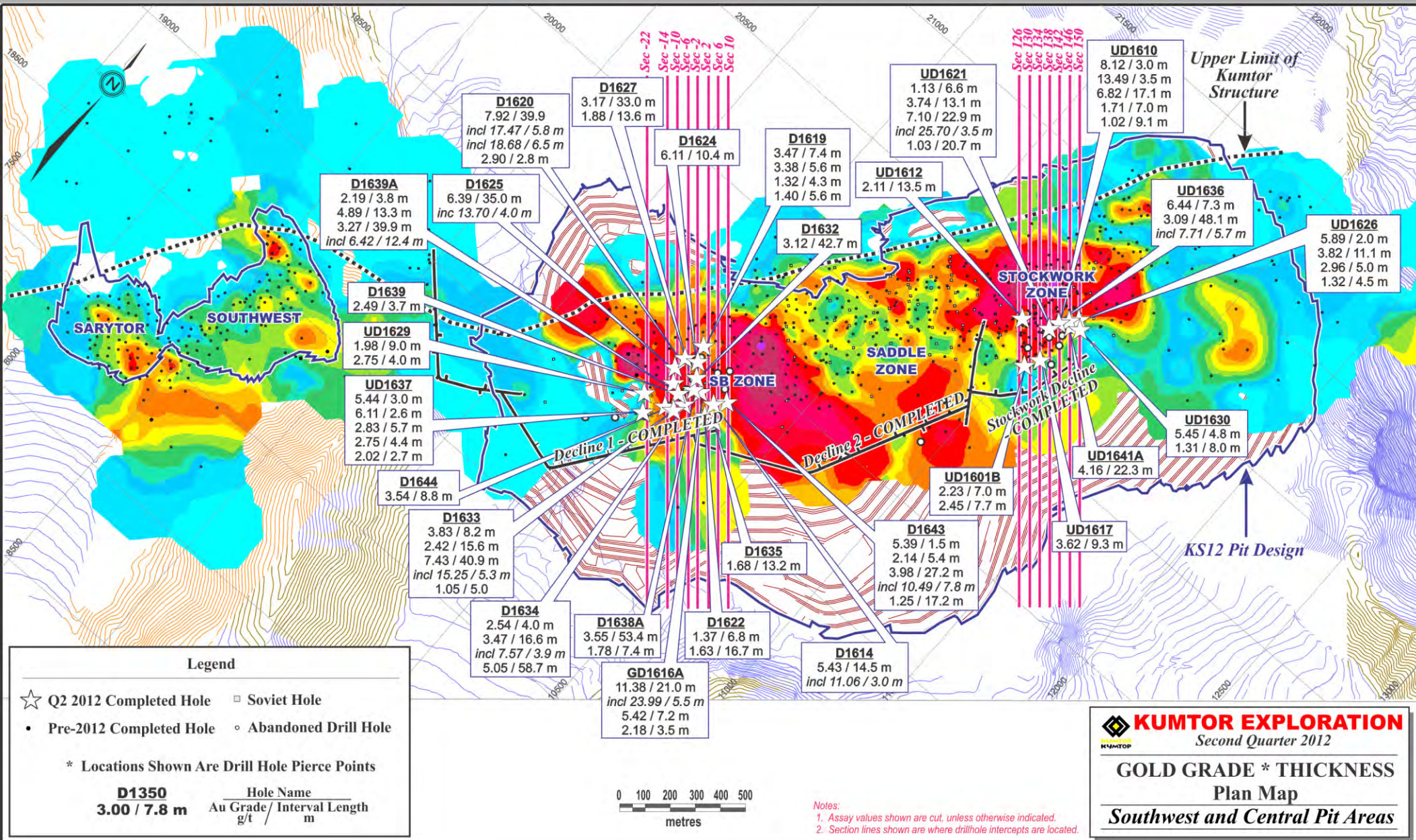


Central Pit Longitudinal Section



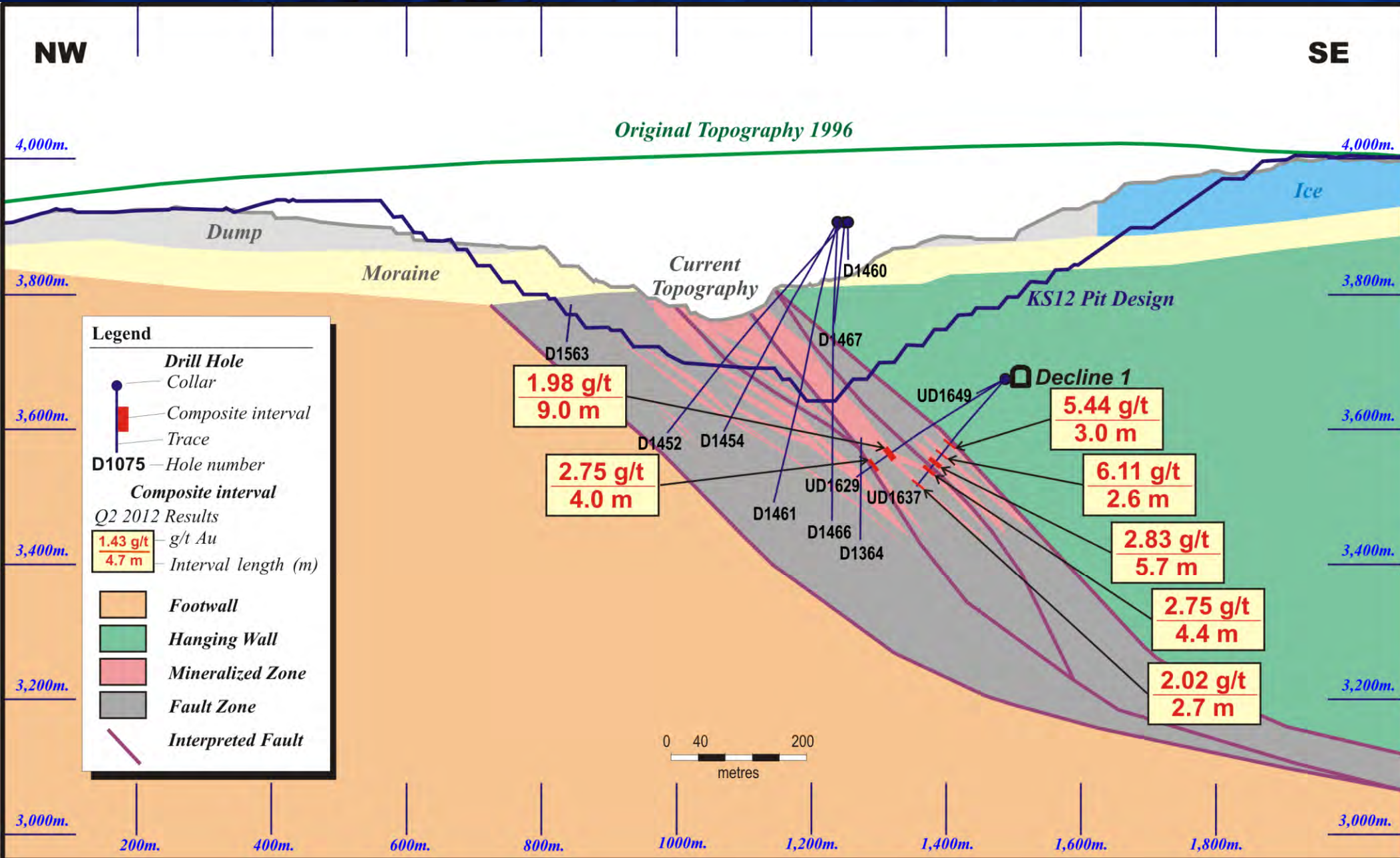
This information should be read together with our news release of August 1, 2012.
David A. Groves, a Certified Professional Geologist, is Centerra's qualified person for the purpose of National Instrument 43-101.

Central Pit Plan Map



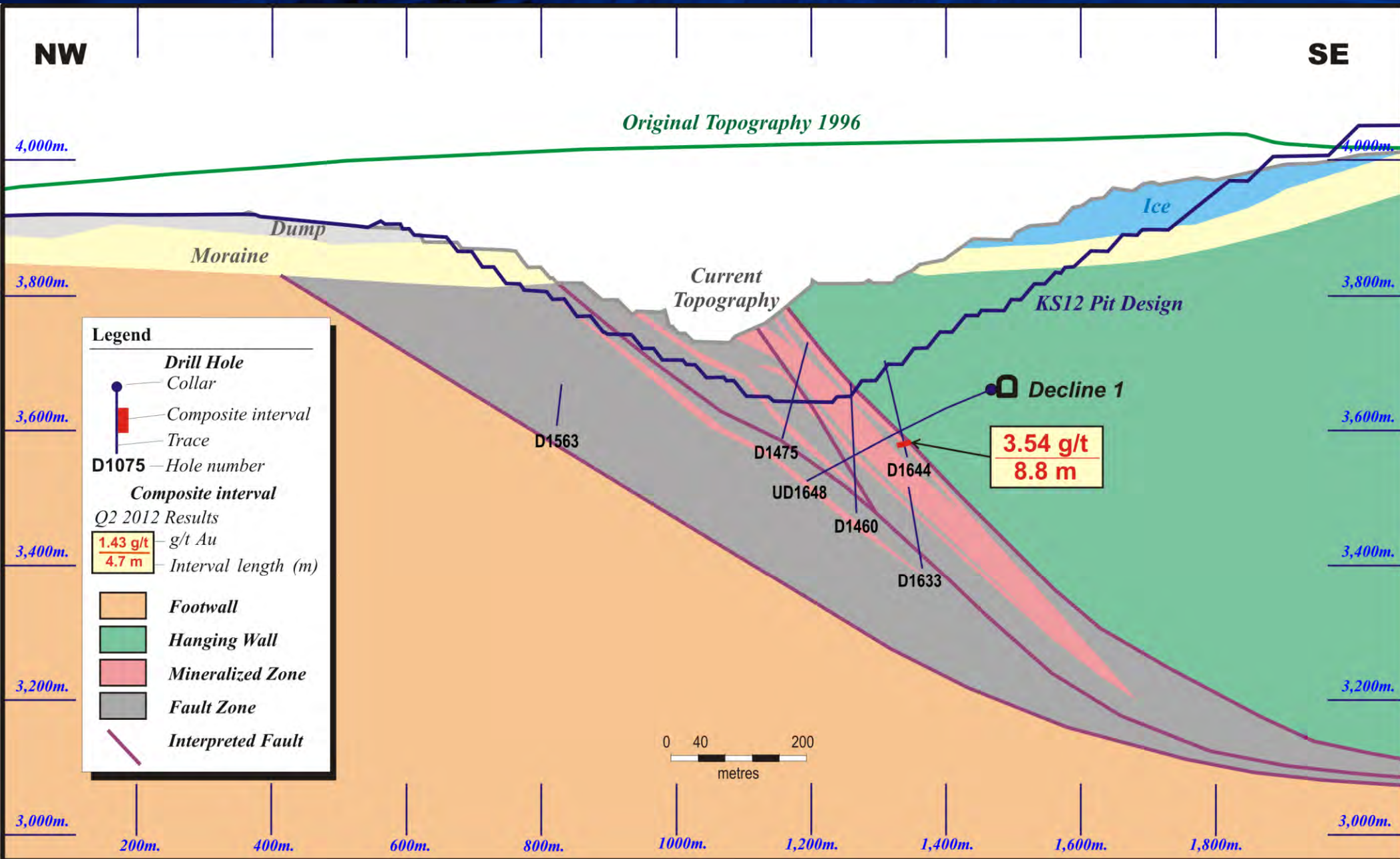
This information should be read together with our news release of August 1, 2012. David A. Groves, a Certified Professional Geologist, is Centerra's qualified person for the purpose of National Instrument 43-101.

Central Pit Section -22



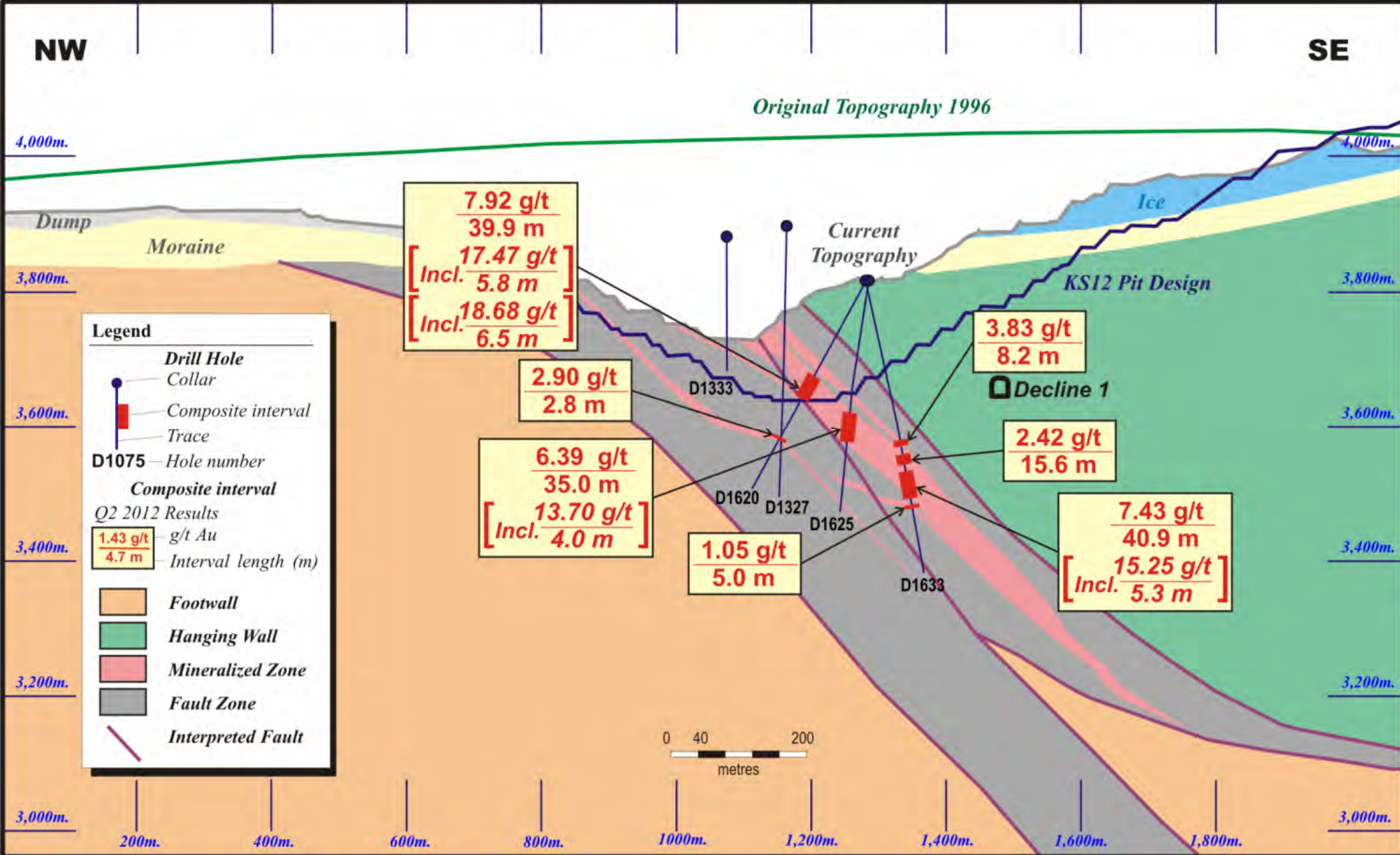
This information should be read together with our news release of August 1, 2012. David A. Groves, a Certified Professional Geologist, is Centerra's qualified person for the purpose of National Instrument 43-101.

Central Pit Section -14



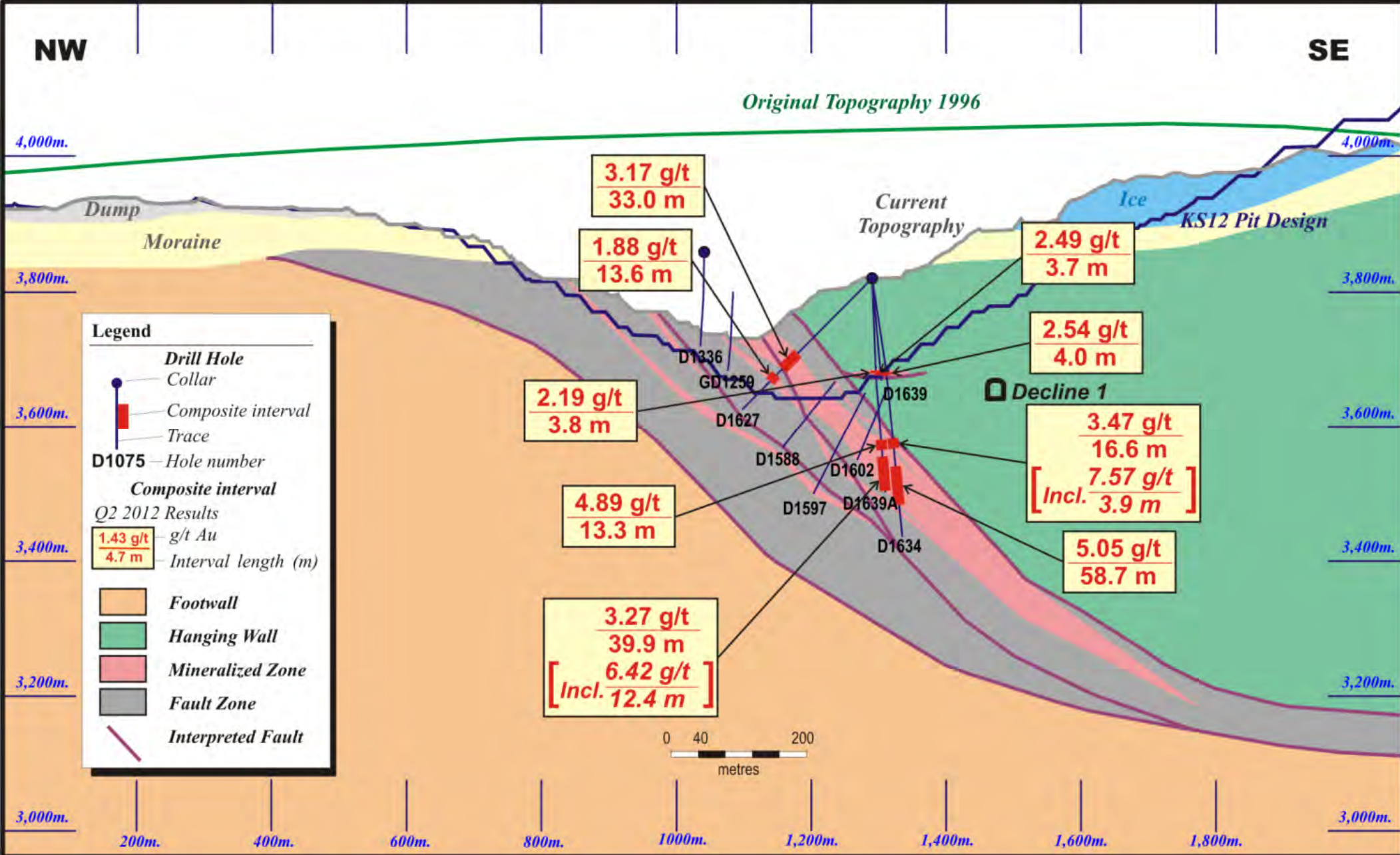
This information should be read together with our news release of August 1, 2012. David A. Groves, a Certified Professional Geologist, is Centerra's qualified person for the purpose of National Instrument 43-101.

Central Pit Section -10



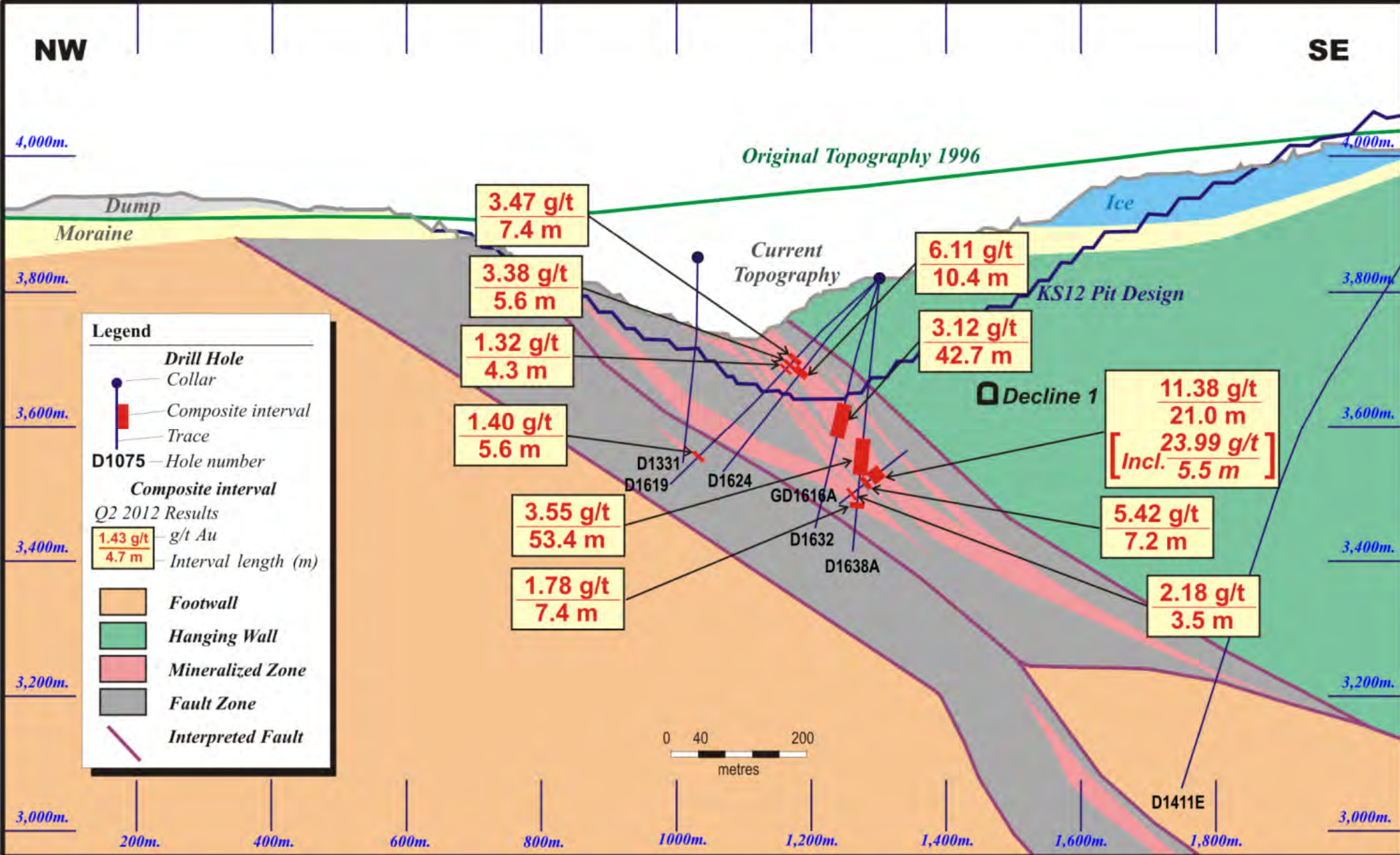
This information should be read together with our news release of August 1, 2012. David A. Groves, a Certified Professional Geologist, is Centerra's qualified person for the purpose of National Instrument 43-101.

Central Pit Section -6



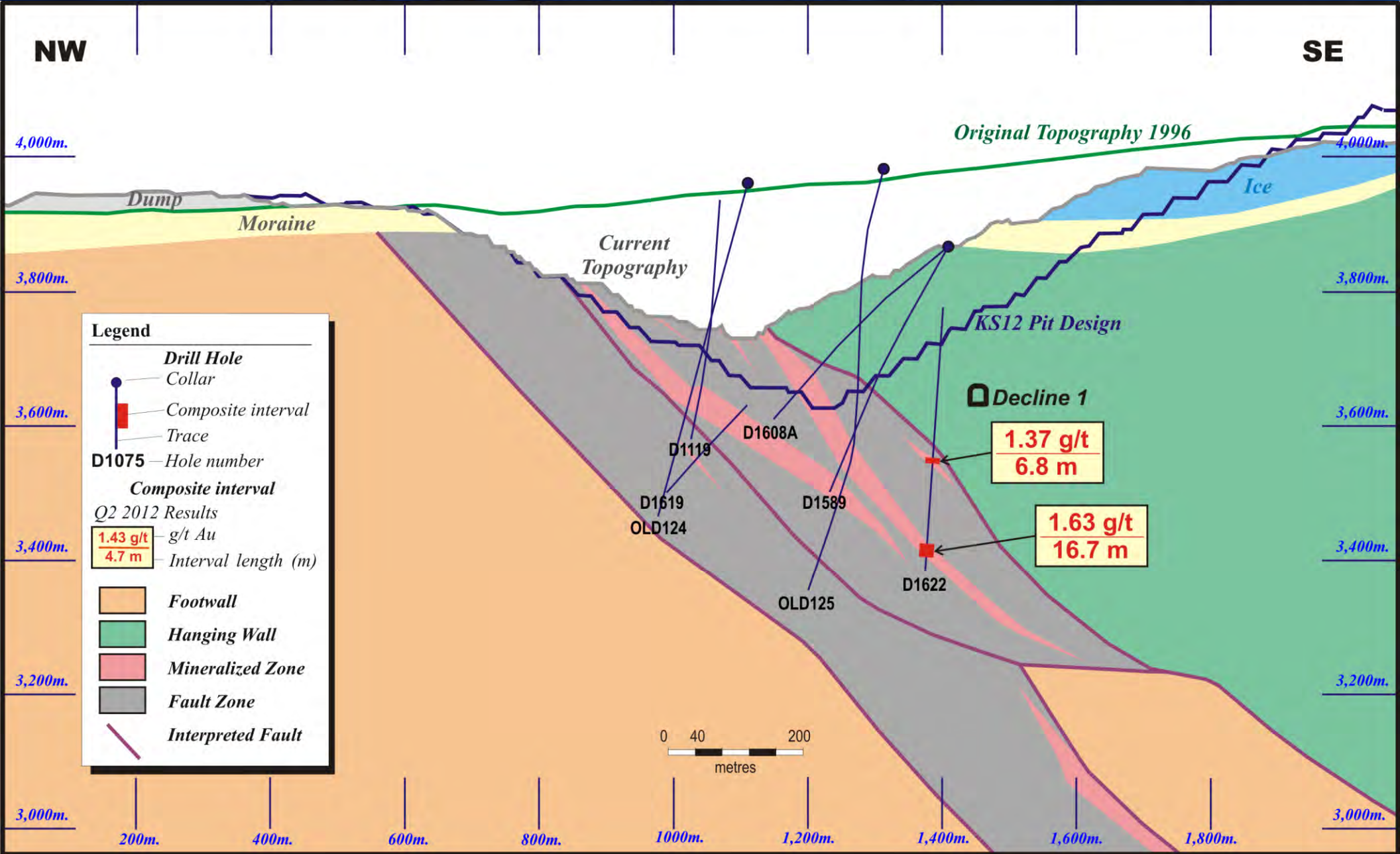
This information should be read together with our news release of August 1, 2012. David A. Groves, a Certified Professional Geologist, is Centerra's qualified person for the purpose of National Instrument 43-101.

Central Pit Section -2



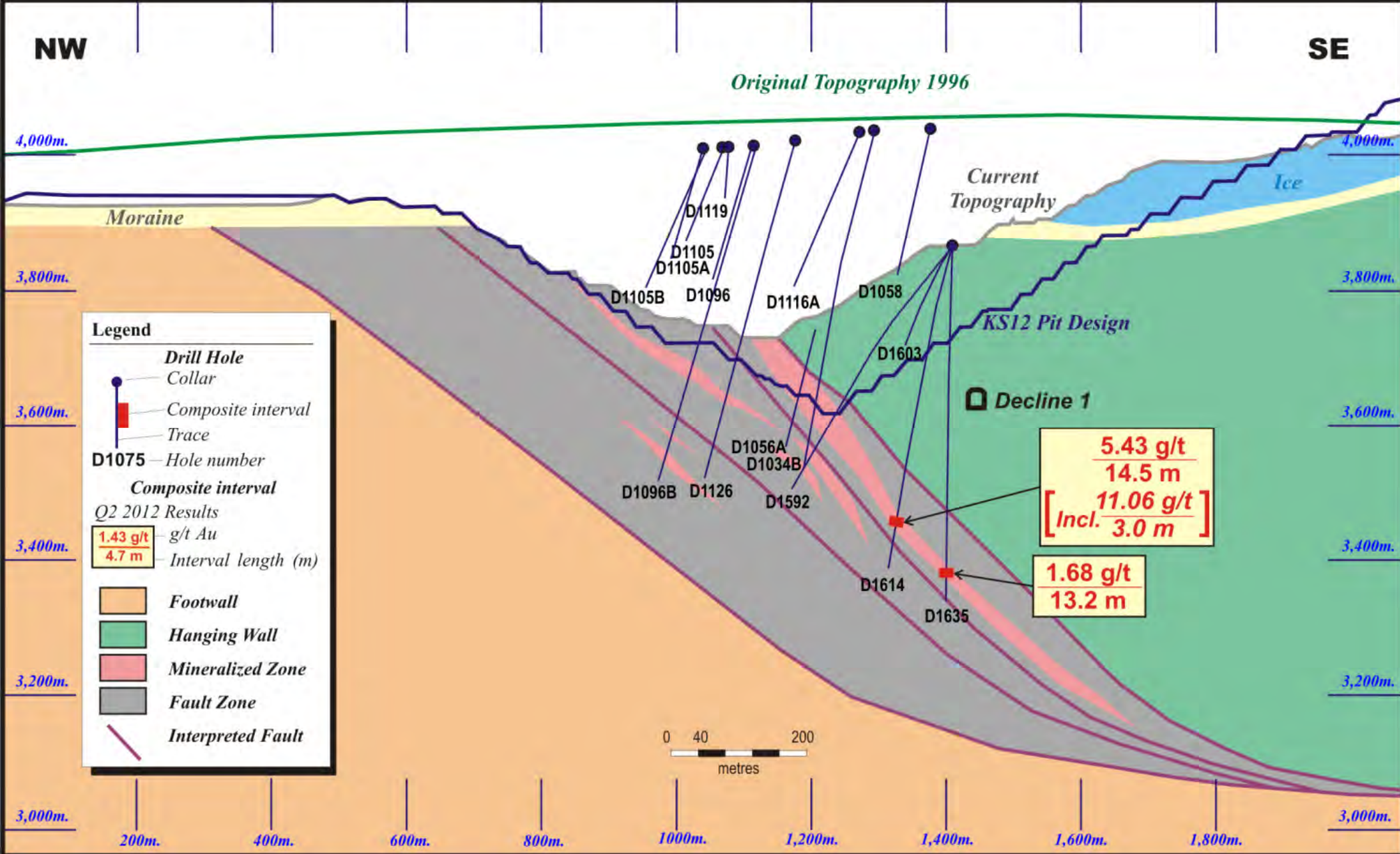
This information should be read together with our news release of August 1, 2012. David A. Groves, a Certified Professional Geologist, is Centerra's qualified person for the purpose of National Instrument 43-101.

Central Pit Section 2



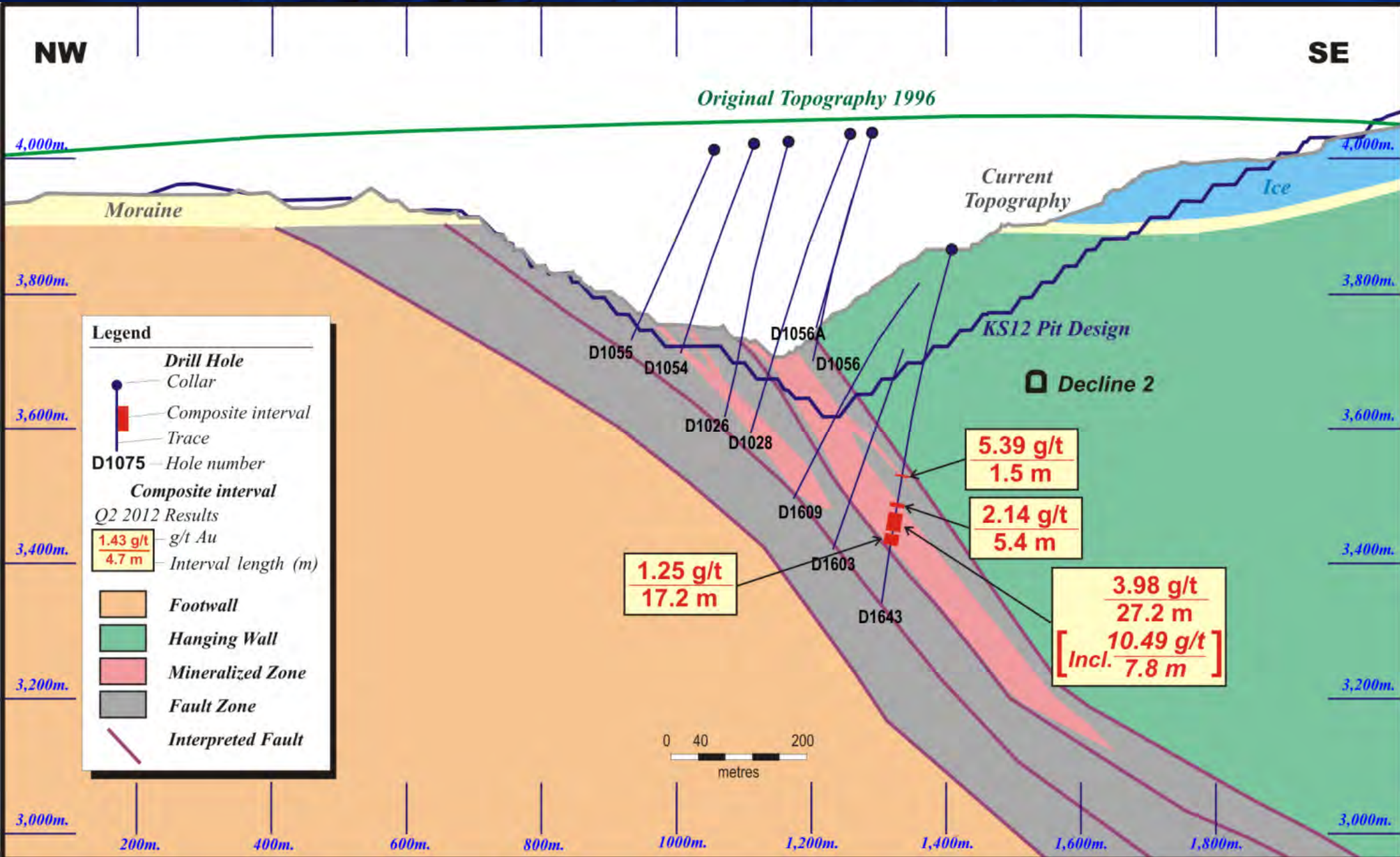
This information should be read together with our news release of August 1, 2012. David A. Groves, a Certified Professional Geologist, is Centerra's qualified person for the purpose of National Instrument 43-101.

Central Pit Section 6



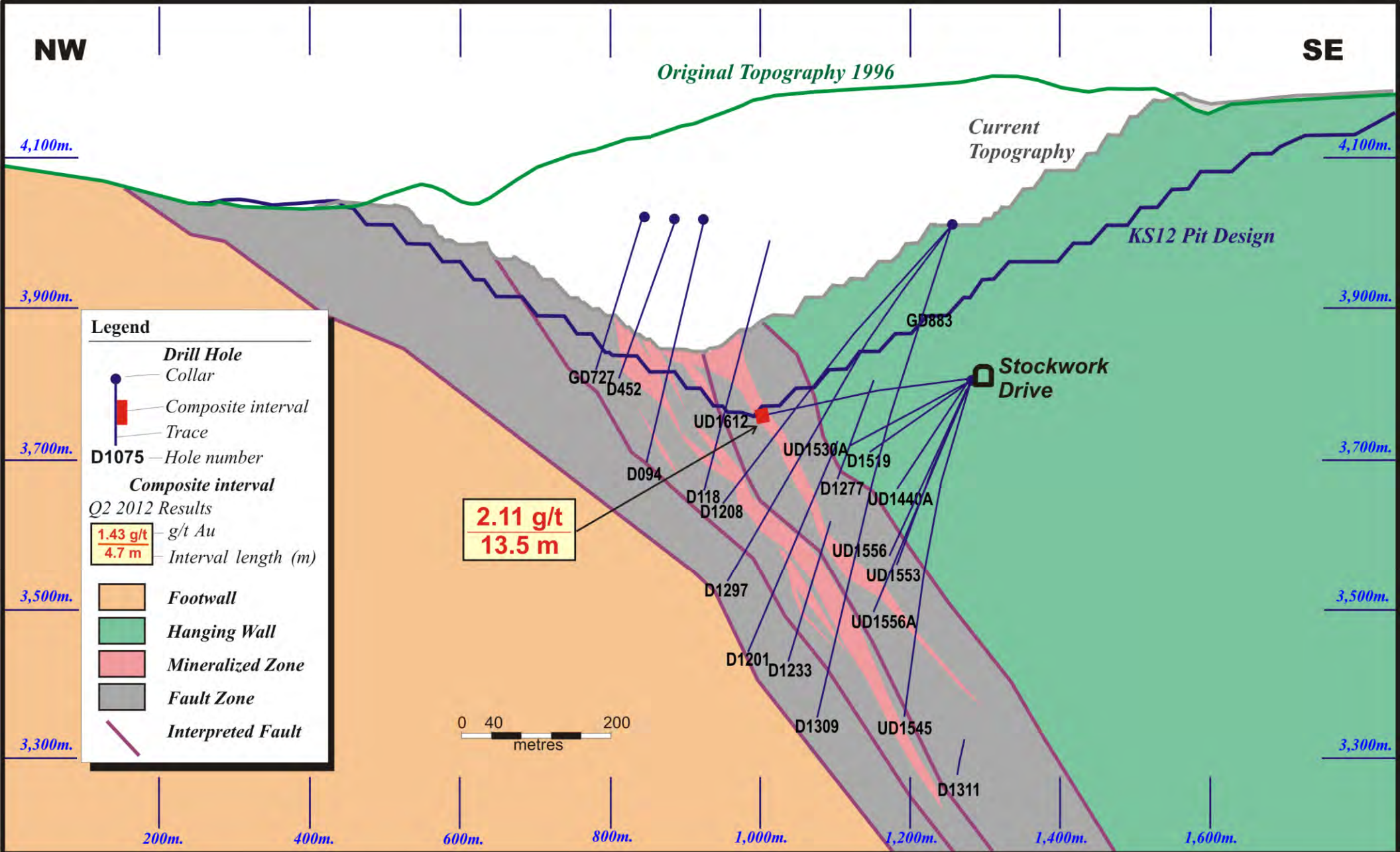
This information should be read together with our news release of August 1, 2012. David A. Groves, a Certified Professional Geologist, is Centerra's qualified person for the purpose of National Instrument 43-101.

Central Pit Section 10



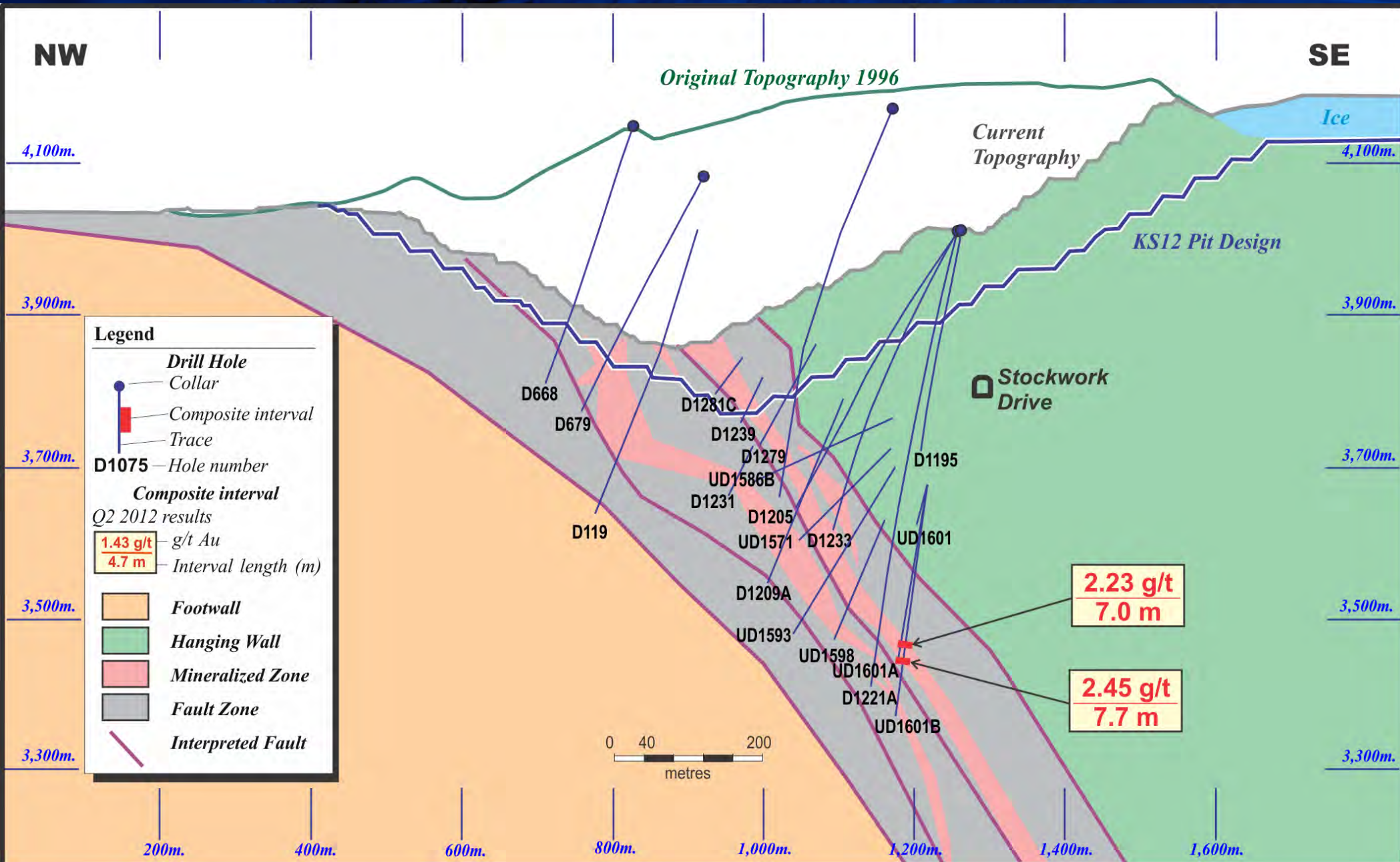
This information should be read together with our news release of August 1, 2012. David A. Groves, a Certified Professional Geologist, is Centerra's qualified person for the purpose of National Instrument 43-101.

Central Pit Section 126



This information should be read together with our news release of August 1, 2012. David A. Groves, a Certified Professional Geologist, is Centerra's qualified person for the purpose of National Instrument 43-101.

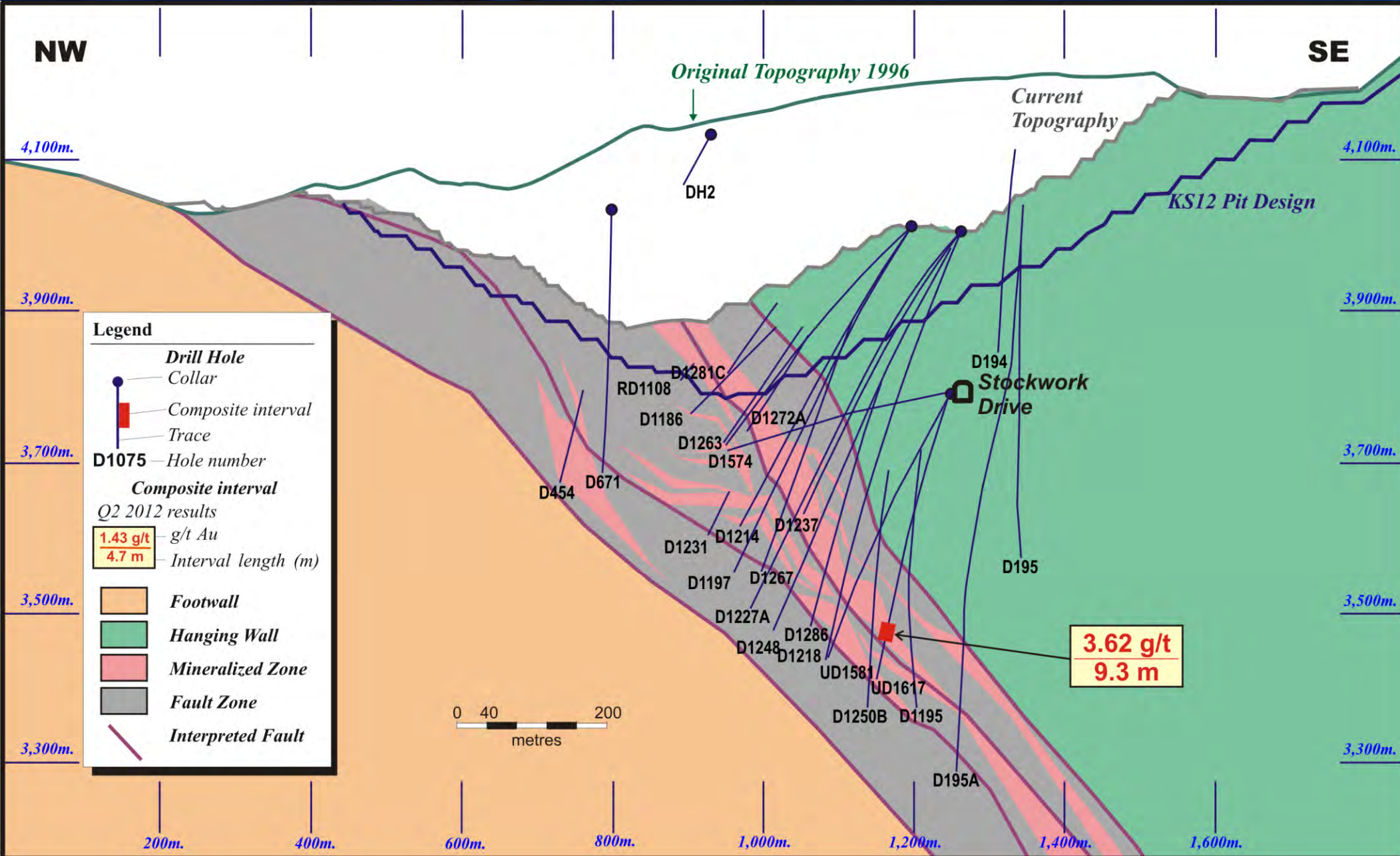
Central Pit Section 130



This information should be read together with our news release of August 1, 2012.
 David A. Groves, a Certified Professional Geologist, is Centerra's qualified person for the purpose of National Instrument 43-101.

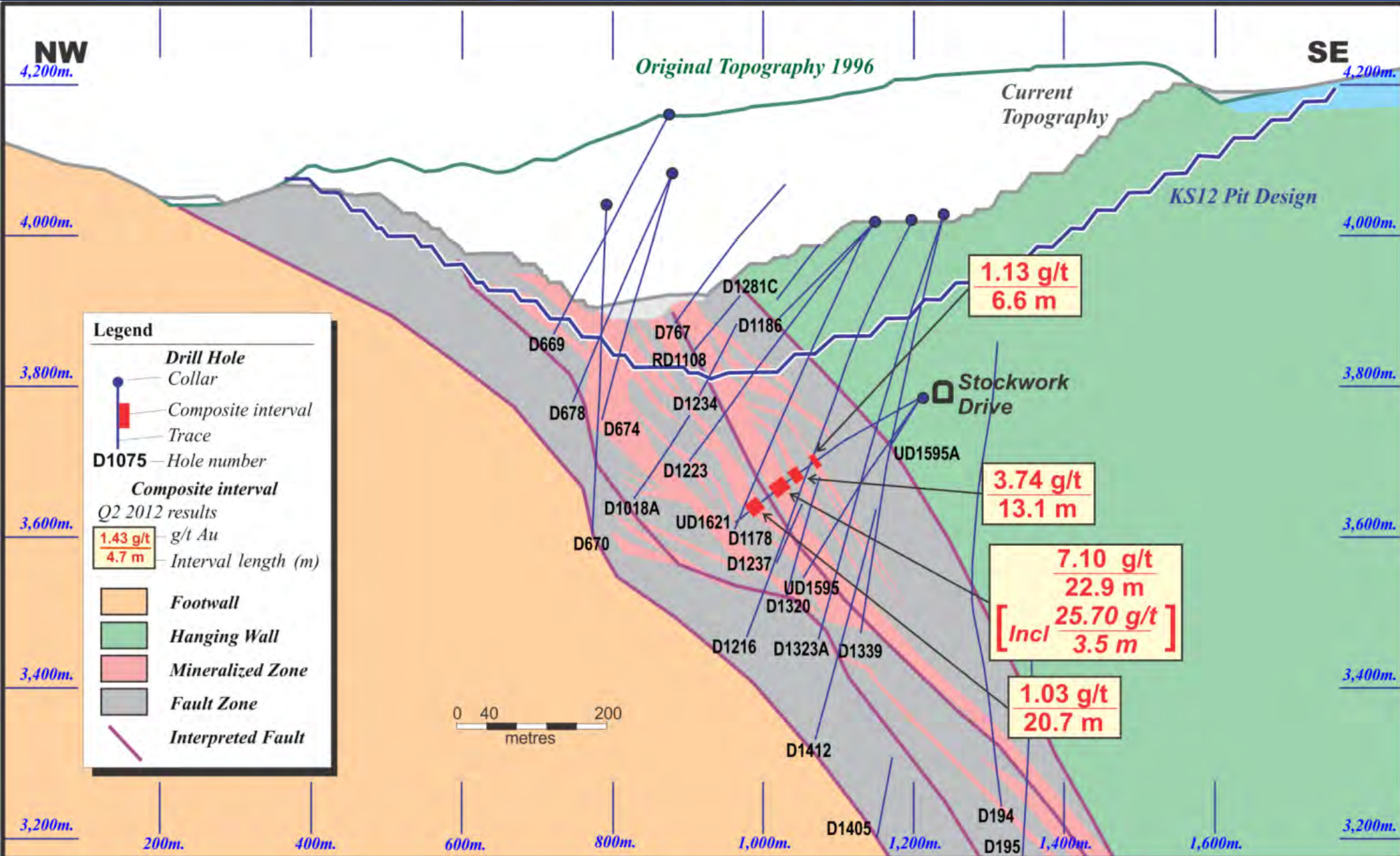


Central Pit Section 134



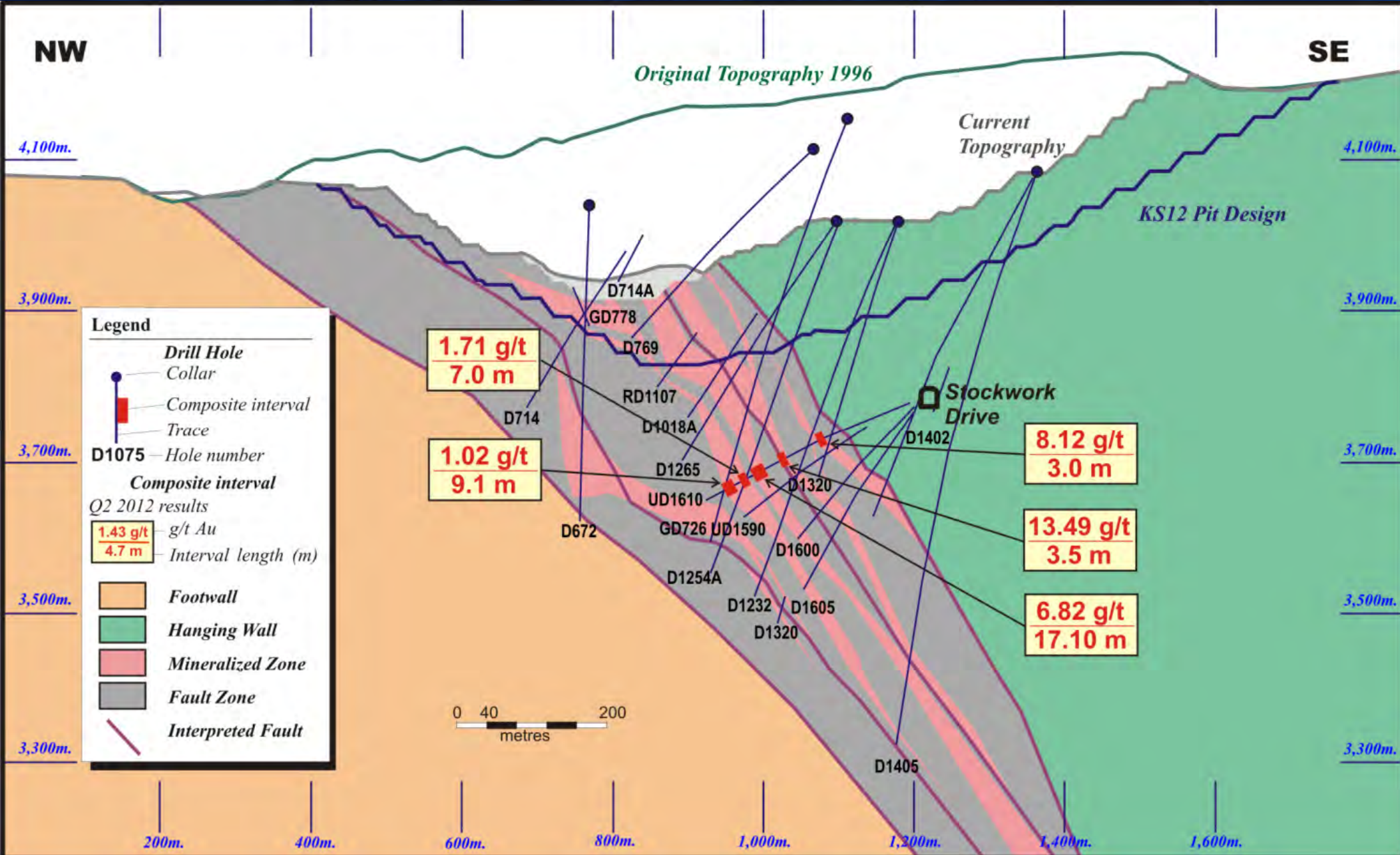
This information should be read together with our news release of August 1, 2012.
 David A. Groves, a Certified Professional Geologist, is Centerra's qualified person for the purpose of National Instrument 43-101.

Central Pit Section 138



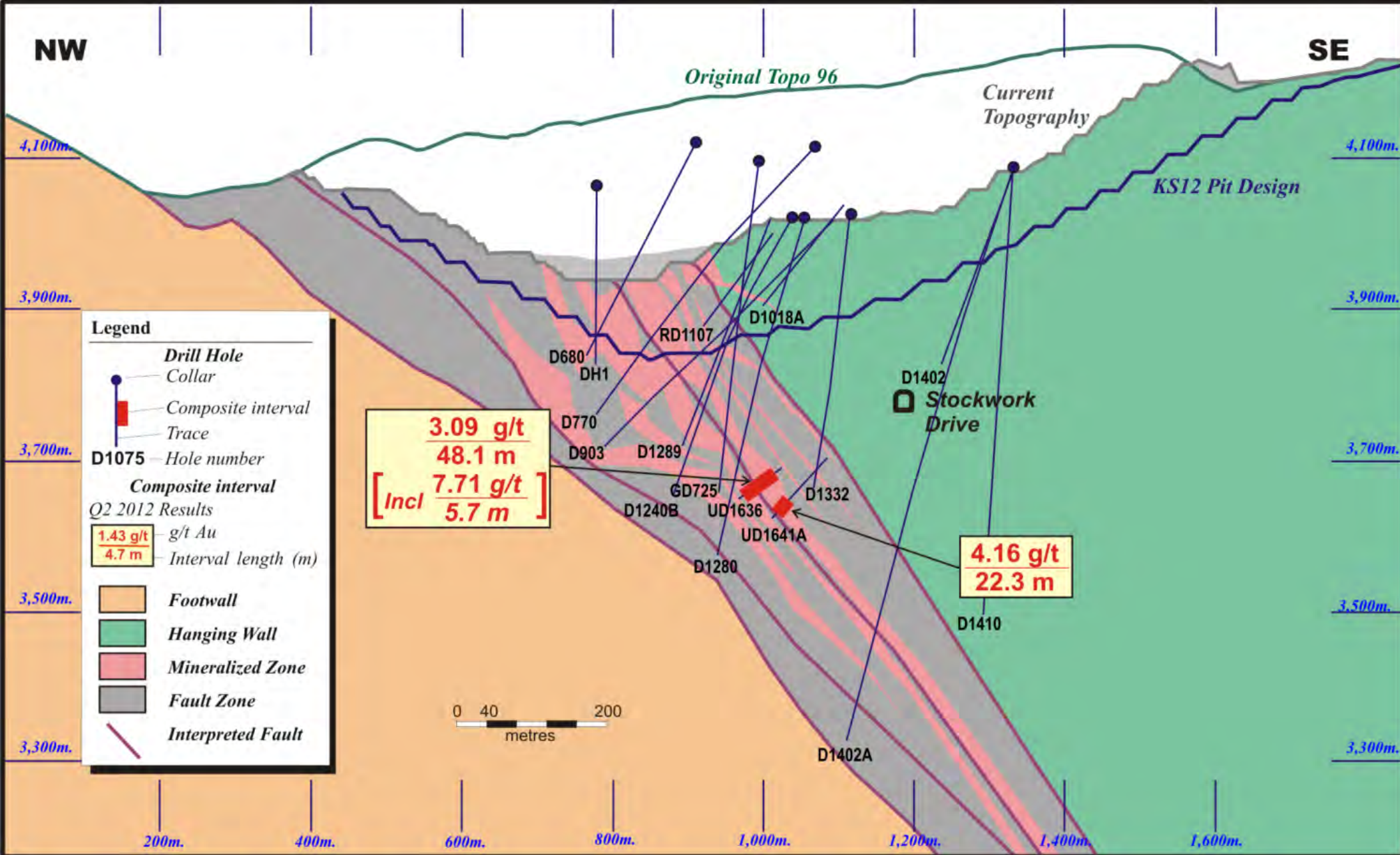
This information should be read together with our news release of August 1, 2012. David A. Groves, a Certified Professional Geologist, is Centerra's qualified person for the purpose of National Instrument 43-101.

Central Pit Section 142



This information should be read together with our news release of August 1, 2012. David A. Groves, a Certified Professional Geologist, is Centerra's qualified person for the purpose of National Instrument 43-101.

Central Pit Section 146

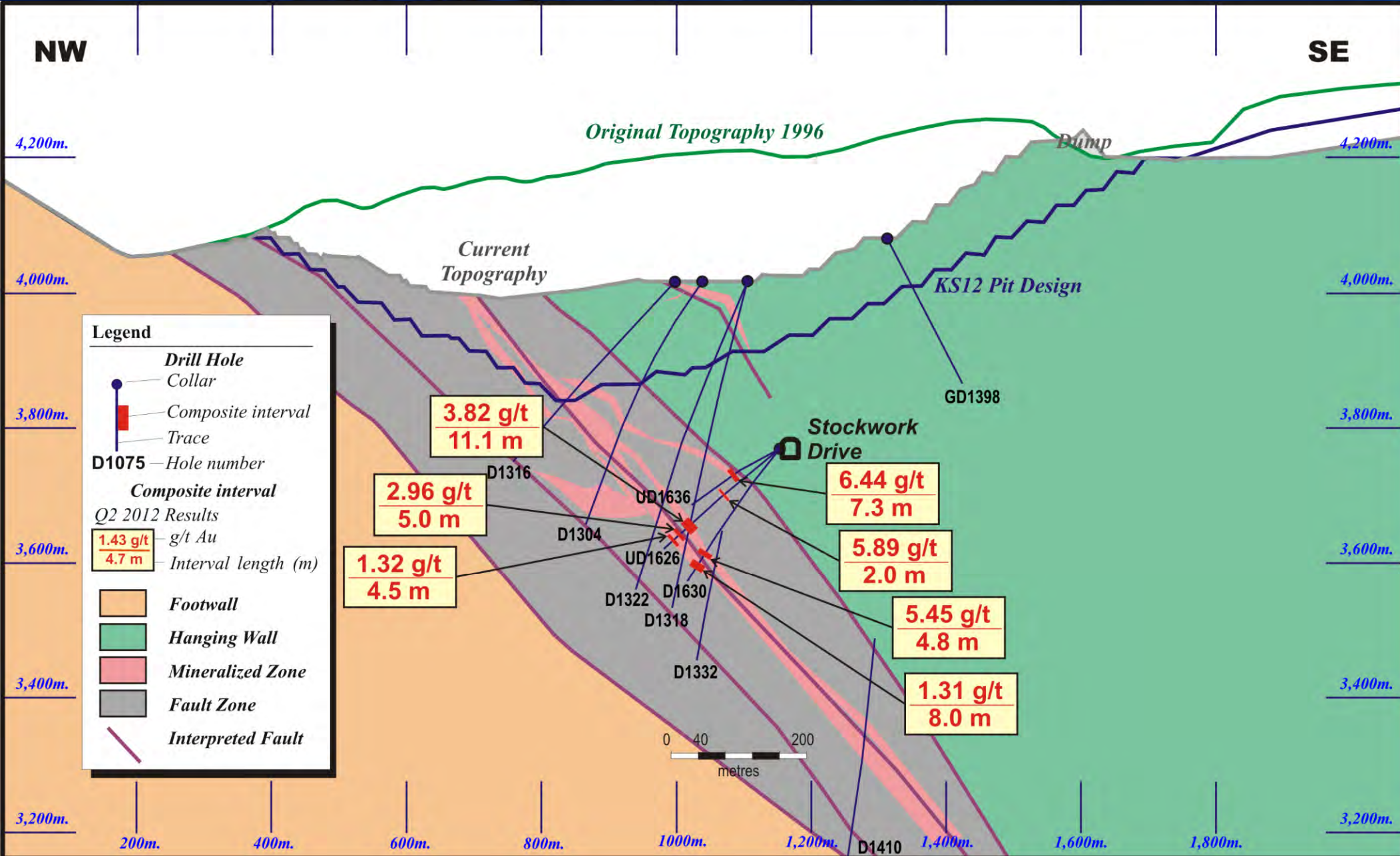


This information should be read together with our news release of August 1, 2012.

David A. Groves, a Certified Professional Geologist, is Centerra's qualified person for the purpose of National Instrument 43-101.



Central Pit Section 150



This information should be read together with our news release of August 1, 2012. David A. Groves, a Certified Professional Geologist, is Centerra's qualified person for the purpose of National Instrument 43-101.



Centerra Gold Inc. - Kumtor 2012 Drilling Results

Sarytor Deposit Area

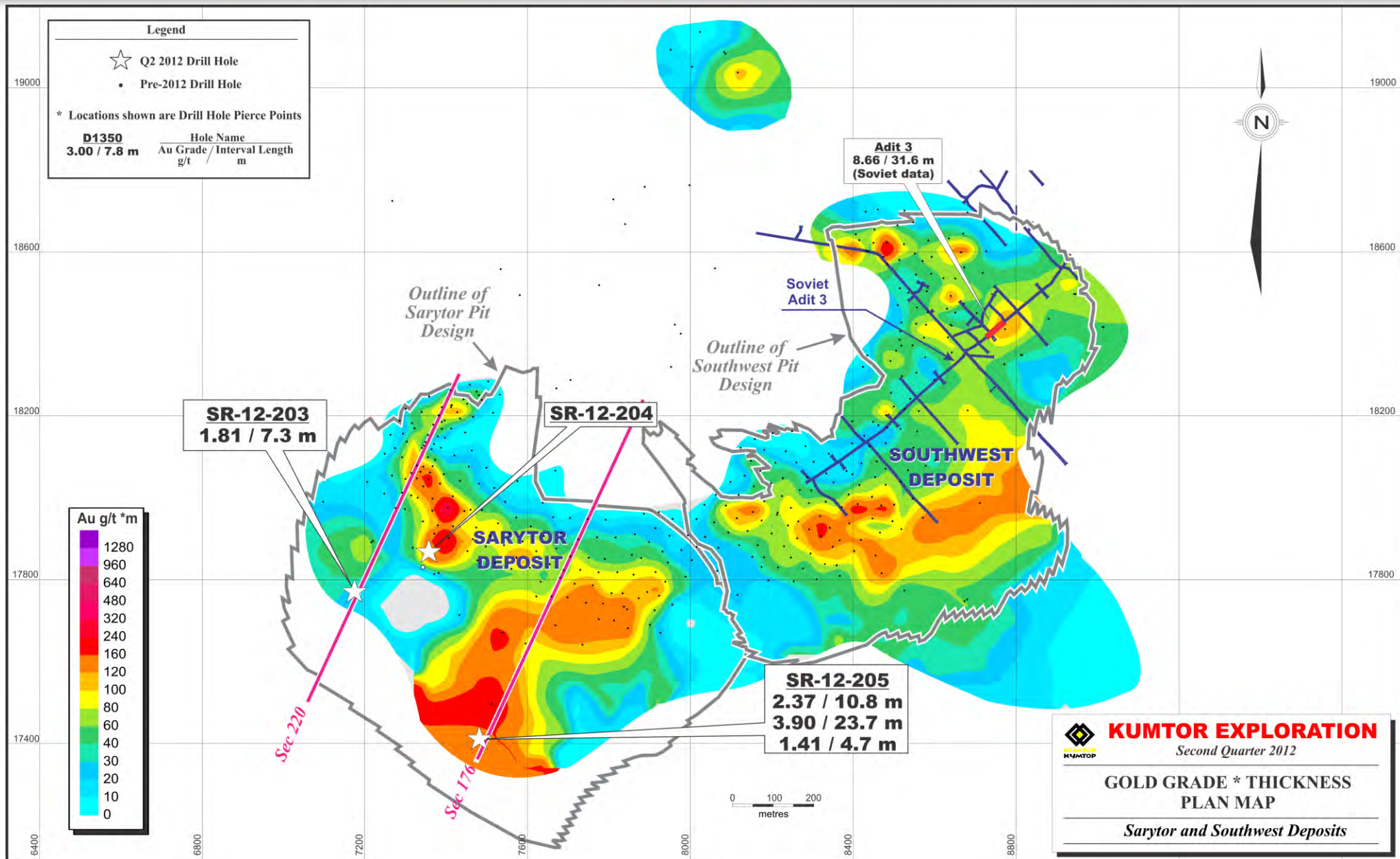
Period April 1st, 2012 to June 30th, 2012

Page 1 of 1

Drill Hole	Drill Section	From (m)	To (m)	Core Length (m)	Au (g/t)
SR-12-203	220	342.3	349.6	7.3	1.81
SR-12-204	208	<i>No significant intercepts</i>			
SR-12-205	176	683.7	694.5	10.8	2.37
		700.5	724.2	23.7	3.90
		728.2	732.9	4.7	1.41

Notes: Significant mineralized intervals are greater than 1.00 g/t Au.
 Individual assays are top cut to 60 g/t Au prior to composite calculation.
 Lower cut-off for higher grade sub-intervals is 7.0 g/t Au.
 True widths for mineralized zones are from 50% to 95% of stated down hole interval.
 This information should be read together with our news release of August 1st, 2012.
 David A. Groves, a Certified Professional Geologist, is Centerra's qualified person for the purpose of National Instrument 43-101.
 Tables are current as of June 30th, 2012.

Southwest-Sarytor Deposits

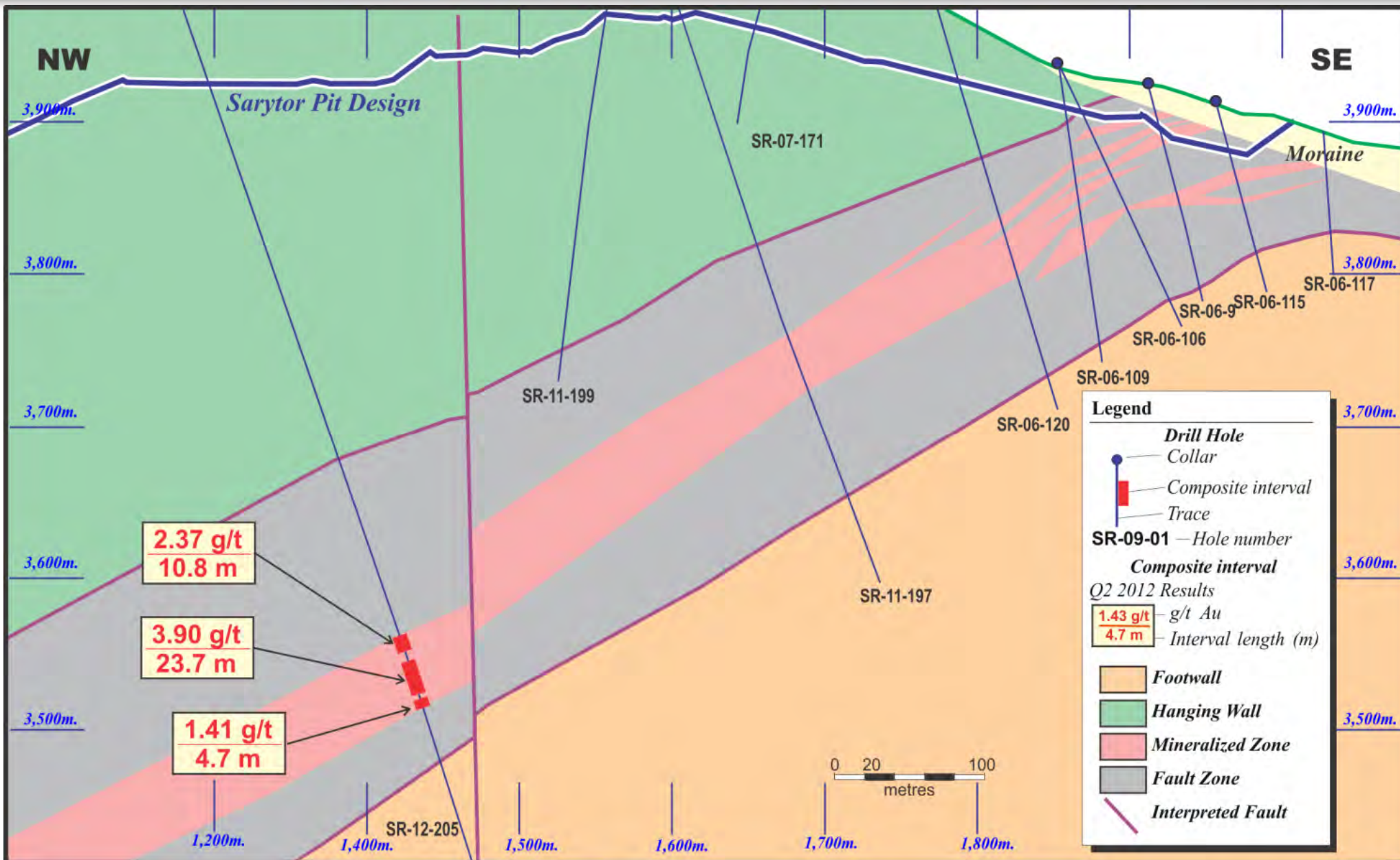


This information should be read together with our news release of August 1, 2012.

David A. Groves, a Certified Professional Geologist, is Centerra's qualified person for the purpose of National Instrument 43-101.



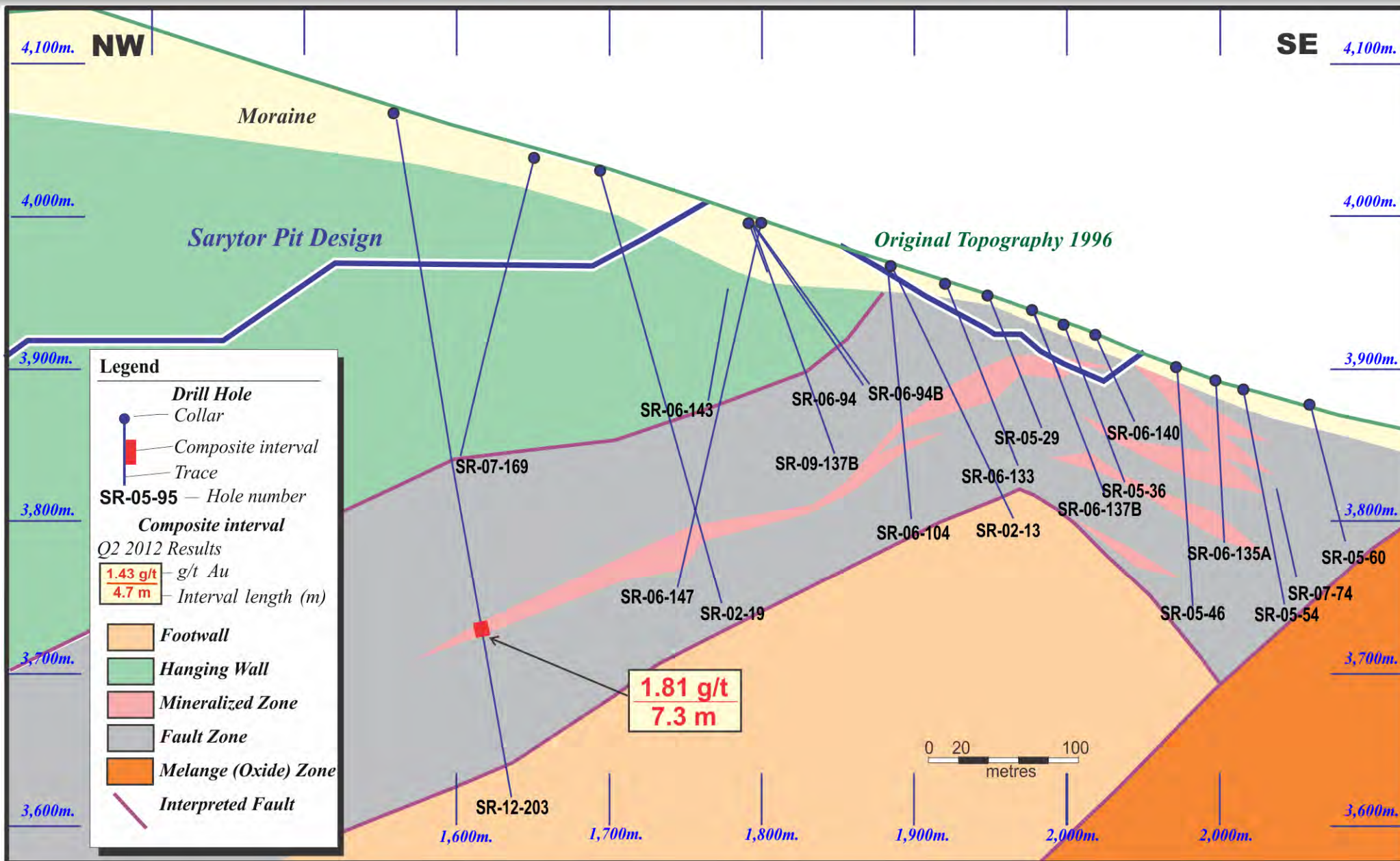
Sarytor Section 176



This information should be read together with our news release of August 1, 2012. David A. Groves, a Certified Professional Geologist, is Centerra's qualified person for the purpose of National Instrument 43-101.



Sarytor Section 220



This information should be read together with our news release of August 1, 2012.

David A. Groves, a Certified Professional Geologist, is Centerra's qualified person for the purpose of National Instrument 43-101.



**Centerra Gold Inc. - Kara-Beldyr 2012 Drilling Results
Baran Zone**

Period April 1st, 2012 to June 30th, 2012

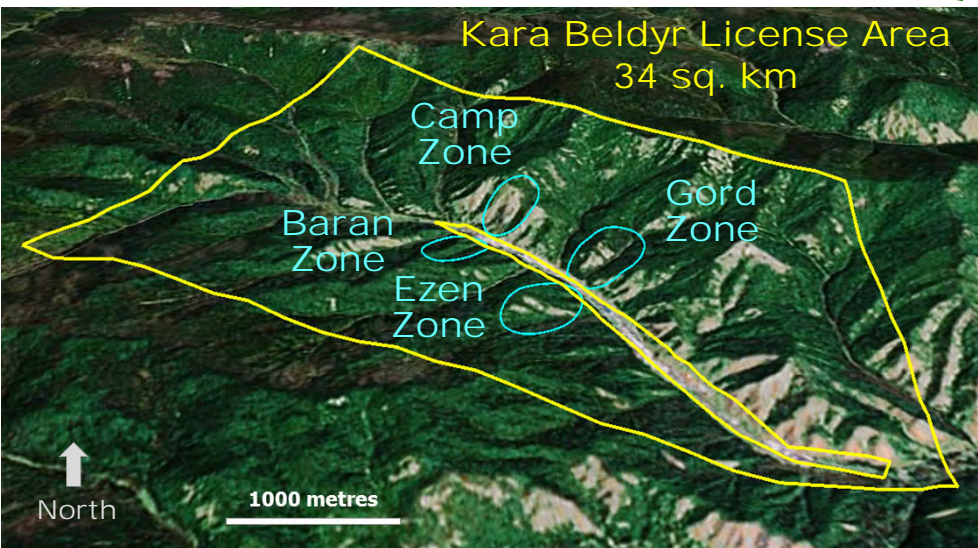
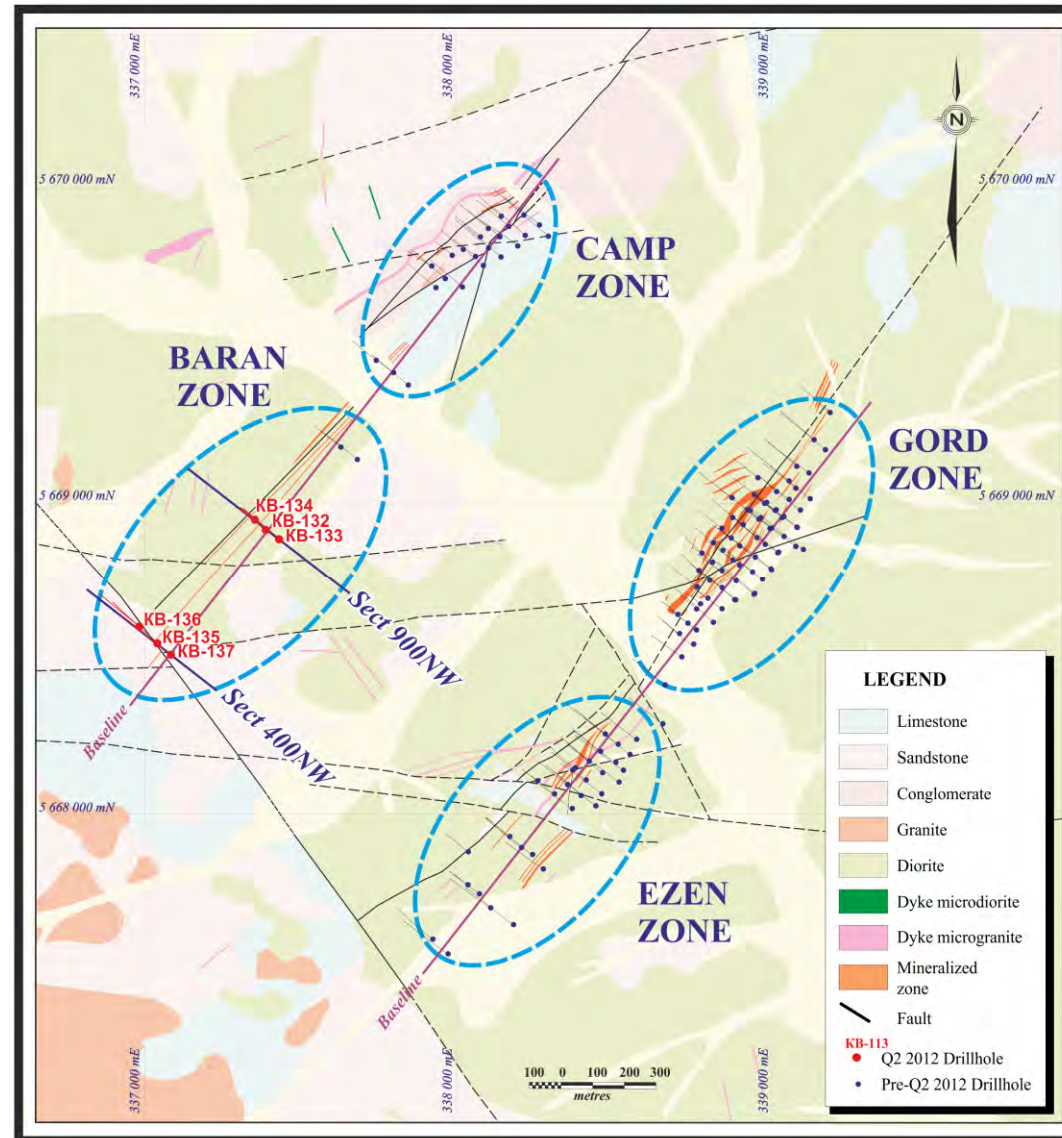
Location	Drill Section	Drill Hole	From (m)	To (m)	Core Length (m)	Au (g/t)
Baran	900NW	KB-132	32.9	33.9	1.0	0.91
			74.0	84.8	10.8	2.17
		KB-133	138.0	139.0	1.0	0.61
			153.0	154.0	1.0	1.06
		KB-134	14.6	17.0	2.4	2.71
			22.0	23.0	1.0	0.62
	400NW	KB-135	50.0	51.0	1.0	0.63
			142.0	143.0	1.0	1.35
		KB-136	198.0	199.0	1.0	0.50
		KB-137	<i>no significant intercepts</i>			

Notes: All assays reported are actual values with no top cutting factor applied
 Significant mineralized intervals are greater than 0.5 g/t
 True widths for mineralized zones are about 70% to 90% of the stated down hole interval
 This information should be read together with our news release of August 1, 2012.
 David A. Groves, a Certified Professional Geologist, is Centerra's qualified person for the purpose of National Instrument 43-101
 Tables are current as of June 30th, 2012.

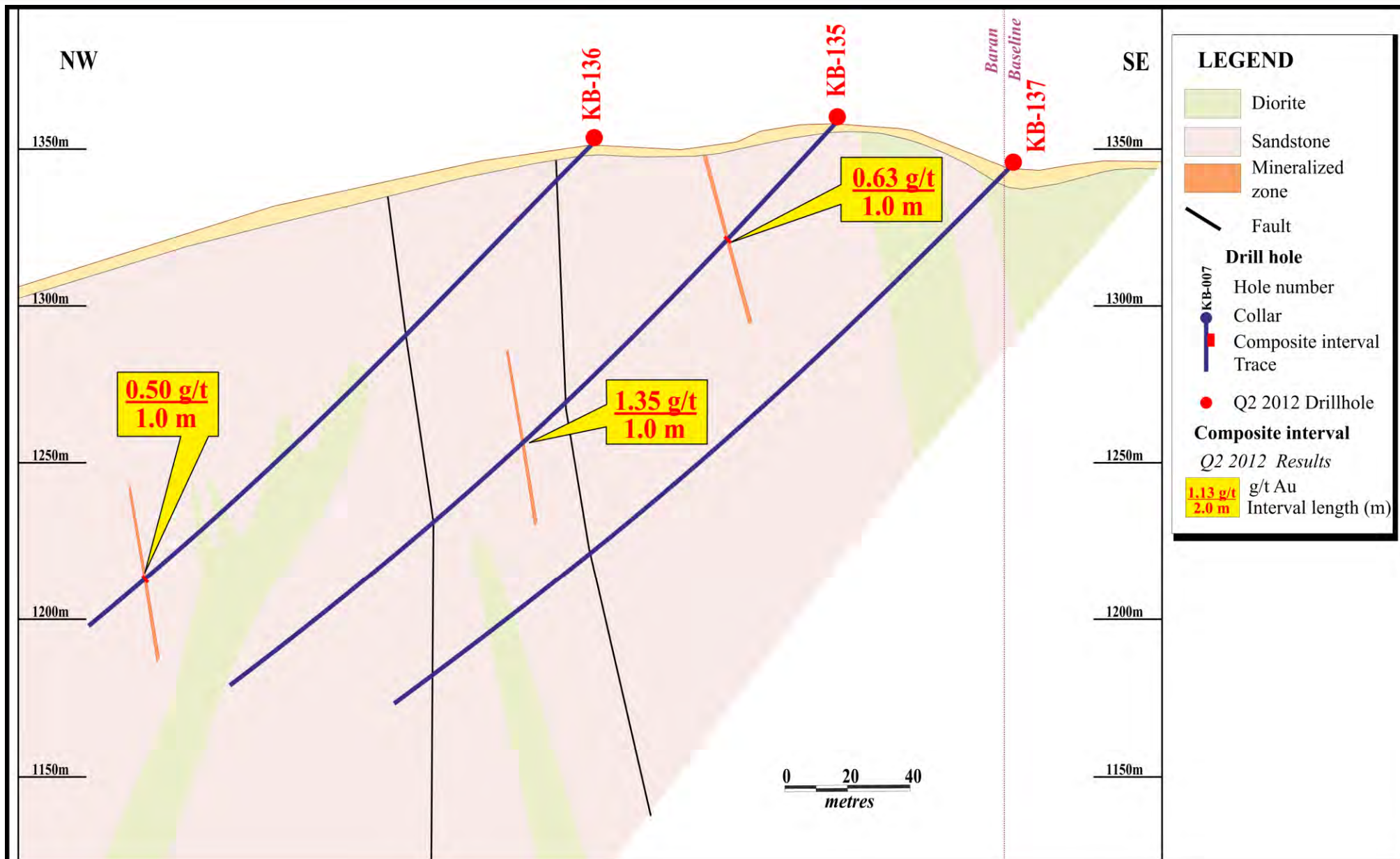
Drillhole Location Plan Map



Kara Beldyr Project

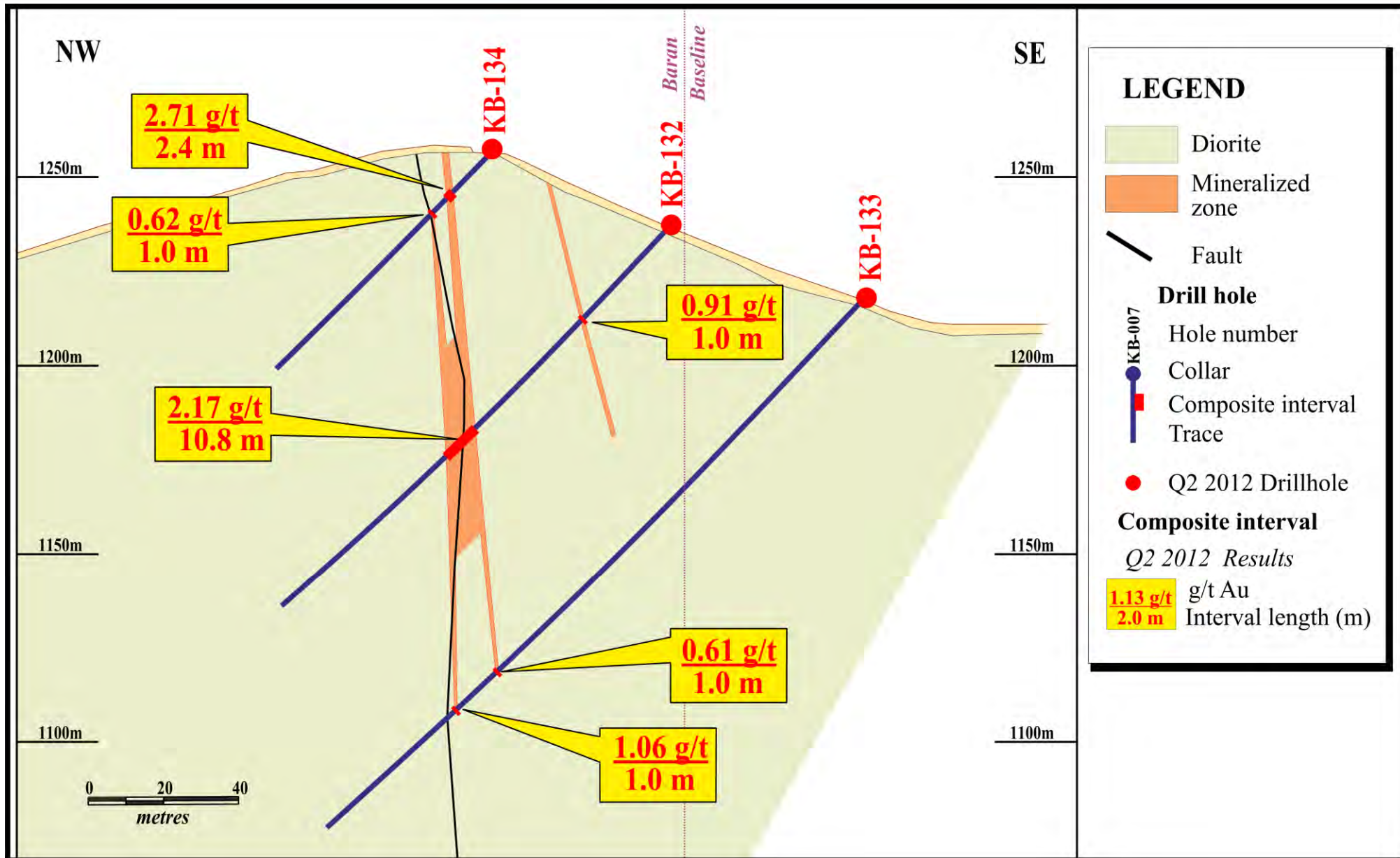


Baran Zone, Section 400NW



This information should be read together with our news release of August 1, 2012. David A. Groves, a Certified Professional Geologist, is Centerra's qualified person for the purpose of National Instrument 43-101.

Baran Zone, Section 900NW



This information should be read together with our news release of August 1, 2012. David A. Groves, a Certified Professional Geologist, is Centerra's qualified person for the purpose of National Instrument 43-101.