



**Centerra Gold Inc. & Premier Gold Mines**  
**Trans-Canada Property, Hardrock Gold Project**  
**Diamond Drill Hole Locations**  
 Period January 1st, 2015 to June 3rd, 2015



Drill Hole	Location Easting	Location Northing	Elevation (m)	Length (m)	Collar Azimuth	Collar Dip
MM695	505,191.24	5,502,788.59	336.92	310.0	355.0	-53.1
MM696	505,159.97	5,502,776.32	342.20	40.6	355.6	-53.0
MM697	505,133.30	5,502,783.28	342.26	308.0	353.2	-52.2
MM698	504,880.47	5,502,613.43	337.28	64.0	181.4	-41.3
MM699	504,740.16	5,502,892.81	334.47	385.0	357.7	-56.4
MM700	504,609.56	5,502,896.57	336.93	397.0	357.4	-57.1
MM701	504,572.22	5,503,020.28	336.44	282.0	357.1	-56.0
MM702	504,530.29	5,502,987.61	338.58	109.0	2.6	-44.4
MM703	504,999.88	5,503,293.07	334.22	239.3	178.3	-46.7
MM704	504,981.38	5,503,111.17	334.94	39.1	359.5	-44.0
MM705	504,969.61	5,503,293.46	333.87	224.0	180.6	-48.9
MM706	504,941.09	5,503,279.98	334.07	260.0	178.1	-53.6
MM707	504,880.11	5,503,006.85	334.20	86.0	0.5	-47.3
MM708	504,879.91	5,503,239.32	333.98	193.0	182.0	-56.1
MM709	504,839.97	5,503,219.06	334.13	135.5	181.9	-60.1
MM710	504,829.45	5,503,221.70	334.66	100.0	1.5	-46.0
MM711	504,819.66	5,503,212.92	334.80	193.0	181.2	-47.5
MM712	504,780.54	5,503,145.41	334.79	97.0	0.6	-52.2
MM713	504,770.31	5,503,251.96	334.41	106.0	357.4	-55.1
MM714	504,743.70	5,503,238.25	334.58	106.0	354.8	-40.6
MM715	504,715.94	5,503,268.65	341.26	88.0	352.3	-53.2
MM716	504,680.15	5,503,280.99	341.22	88.0	359.1	-57.4
MM717	504,429.88	5,502,771.88	338.82	409.0	0.1	-63.2
MM718	504,339.27	5,502,658.64	337.35	475.0	358.9	-60.6
MM719	504,289.95	5,502,706.39	339.64	504.0	355.9	-60.8
MM720	504,259.41	5,502,740.34	340.33	307.0	356.4	-52.6
MM721	504,229.20	5,502,886.57	339.74	271.0	358.7	-53.0
MM722	504,230.15	5,502,724.36	340.02	289.0	357.2	-50.8
MM723	504,165.81	5,502,989.46	339.79	419.0	357.7	-59.0
MM724	504,170.13	5,502,736.99	340.68	691.0	354.7	-56.5
MM725	504,149.38	5,502,897.69	340.79	547.0	357.6	-52.7
MM726	504,119.69	5,503,011.11	338.00	121.0	359.0	-41.1
MM727	504,060.15	5,502,976.28	338.77	52.0	0.0	-41.6
MM728	504,081.28	5,503,370.91	335.63	706.0	178.2	-54.9
MM729	504,057.76	5,503,315.15	336.96	229.0	179.9	-59.0
MM730	504,000.59	5,502,910.69	343.33	304.0	351.7	-66.9
MM731	503,959.22	5,502,617.95	340.24	666.0	354.0	-60.2
MM732	503,933.25	5,502,821.52	344.64	565.0	355.1	-63.0
MM733	503,929.66	5,502,822.96	344.63	337.0	353.7	-52.4
MM734	503,930.48	5,503,011.49	338.10	93.0	359.0	-49.3
MM735	503,909.85	5,502,698.98	341.32	394.0	1.2	-60.6
MM736	503,900.88	5,502,965.23	342.25	232.0	359.7	-51.4
MM737	503,875.68	5,502,650.57	342.29	385.0	354.7	-56.2
MM738	503,879.37	5,502,799.74	346.36	487.0	356.4	-55.8
MM739	503,815.34	5,502,774.49	346.12	481.0	355.3	-57.3
MM740	503,730.10	5,502,920.52	344.20	211.1	359.7	-54.3
MM741	505,161.12	5,502,828.45	337.04	321.0	357.8	-63.8
MM742	504,060.64	5,502,996.52	338.41	97.0	359.8	-41.3
MM743	504,981.38	5,503,111.17	334.94	105.0	359.5	-43.8
MM744	504,057.79	5,503,315.20	336.91	671.0	176.2	-63.7
MM745	503,199.44	5,502,861.69	346.37	85.0	2.4	-44.2
MM746	503,249.34	5,502,853.45	346.51	88.0	356.9	-47.9
MM747	505,224.81	5,502,915.29	336.43	110.5	359.5	-45.9
MM748	505,250.49	5,502,913.95	336.56	91.0	0.1	-43.6
MM749	505,274.80	5,502,869.69	336.33	111.0	359.0	-55.5
MM750	503,924.69	5,503,406.27	337.13	121.0	145.4	-51.4
MM751	504,049.67	5,503,426.27	336.24	170.0	222.3	-40.5
MM752	504,000.15	5,502,672.88	340.48	666.0	357.2	-59.9
MM753	504,209.81	5,503,469.93	341.90	661.0	180.7	-62.9
MM754	504,238.60	5,503,493.78	341.88	544.0	178.6	-60.9
MM754A	504,238.60	5,503,493.78	341.88	307.0	178.6	-60.9
MM754B	504,238.60	5,503,493.78	341.88	254.0	178.6	-60.9

Notes: Section line is location of the hole collar.

\* Datum is UTM NAD83 Zone 16

This information should be read together with our news release of June 25th, 2015

Dyane Marielle Duquette, P.Ge., a Member of APGO and OGQ, is Centerra and Premier's qualified person for the purpose of National Instrument 43-101.

Table is current as of June 3rd, 2015.



**Centerra Gold Inc. & Premier Gold Mines  
Trans-Canada Property, Hardrock Gold Project  
Drill Results**



Period January 1st, 2015 to June 3rd, 2015

Hole ID	From (m)	To (m)	Core Length (m)	Au g/t
MM695	17.5	22.6	5.1	6.17
	<i>includes</i> 21.5	22.6	1.1	17.80
	34.5	38.0	3.5	0.48
	51.4	54.5	3.1	2.62
	69.5	73.5	4.0	0.63
	88.5	93.0	4.5	0.58
	100.5	106.5	6.0	0.40
	178.5	187.0	8.5	2.79
	<i>includes</i> 185.5	187.0	1.5	14.00
203.5	208.6	5.1	0.55	
MM696	7.7	12.0	4.3	0.44
	16.5	20.0	3.5	0.70
	24.5	29.0	4.5	0.86
	37.0	40.5	3.5	2.59
MM697	9.2	17.5	8.3	0.59
	38.0	45.0	7.0	2.05
	49.5	55.0	5.5	1.63
	60.0	64.0	4.0	0.43
	67.0	74.5	7.5	0.58
	90.3	96.0	5.7	0.39
	109.5	115.5	6.0	0.52
	132.0	138.0	6.0	0.44
	150.0	153.0	3.0	2.36
193.0	197.0	4.0	0.84	
271.5	279.5	8.0	0.44	
MM698	49.5	61.5	12.0	0.93
MM699	46.5	49.5	3.0	2.10
	87.5	93.0	5.5	1.43
	102.5	106.0	3.5	0.61
	133.0	140.5	7.5	0.33
	184.0	187.4	3.4	0.45
	278.0	281.0	3.0	3.39
	297.0	300.5	3.5	0.64
	338.5	354.5	16.0	0.50
375.5	381.5	6.0	0.72	
MM700	12.0	15.0	3.0	0.53
	52.5	56.5	4.0	0.43
	62.5	66.0	3.5	3.57
	80.5	85.0	4.5	0.32
	168.0	171.0	3.0	1.03
	189.5	204.5	15.0	0.55
	256.0	259.0	3.0	0.82
	272.0	275.5	3.5	0.75
	305.5	310.0	4.5	0.61
	323.5	335.0	11.5	3.72
	<i>includes</i> 325.0	326.0	1.0	37.30
	349.0	376.5	27.5	3.49
<i>includes</i> 364.0	365.0	1.0	55.00	

Notes: Mineralized intervals are greater than 0.34 g/t Au  
Higher grade sub-intervals are greater than 10 g/t Au.  
Assays are not capped.  
Minimum 3m width and maximum of 5m internal dilution.  
True widths for mineralized zones are about 60% to 90% of stated down hole interval.  
This information should be read together with our news release of June 25th, 2015  
Dyane Marielle Duquette, P.Geo., a Member of APGO and OGQ, is Centerra and Premier's qualified person for the purpose of National Instrument 43-101.  
Tables are current as of June 3rd, 2015.



**Centerra Gold Inc. & Premier Gold Mines  
Trans-Canada Property, Hardrock Gold Project  
Drill Results**



Period January 1st, 2015 to June 3rd, 2015

Hole ID	From (m)	To (m)	Core Length (m)	Au g/t
<b>MM701</b>	2.0	6.0	4.0	0.45
	23.5	29.5	6.0	0.67
	42.0	46.0	4.0	5.37
	<i>includes</i> 43.5	<i>44.5</i>	<i>1.0</i>	<i>18.70</i>
	104.0	107.0	4.5	0.68
	167.0	175.0	8.0	3.34
	210.0	213.5	3.5	0.63
	244.5	251.0	6.5	1.34
	255.5	263.0	7.5	0.52
	<i>includes</i> 269.0	<i>272.0</i>	<i>3.0</i>	<i>7.82</i>
<b>MM702</b>	16.0	19.0	3.0	0.90
	37.0	48.0	11.0	0.35
	57.0	60.0	3.0	0.50
	73.5	77.0	3.5	0.88
<b>MM703</b>	156.5	159.5	3.0	0.50
	192.0	195.5	3.5	0.42
	230.3	236.0	5.7	0.57
<b>MM704</b>	19.0	22.5	3.5	3.69
	<i>includes</i> 20.1	<i>21.1</i>	<i>1.0</i>	<i>12.50</i>
	31.7	35.0	3.3	14.18
	<i>includes</i> 31.7	<i>34.0</i>	<i>2.3</i>	<i>16.23</i>
<b>MM705</b>	<i>no significant results</i>			
<b>MM706</b>	212.5	218.5	6.0	0.95
	233.5	236.5	3.0	0.38
<b>MM707</b>	16.5	19.5	3.0	0.52
	25.5	34.5	9.0	0.60
<b>MM708</b>	20.5	23.5	3.0	0.42
	104.0	121.0	17.0	2.51
	<i>includes</i> 118.0	<i>119.5</i>	<i>1.5</i>	<i>12.80</i>
	127.0	132.5	5.5	0.38
	137.0	146.0	9.0	0.47
	152.0	157.5	5.5	2.54
	<i>includes</i> 163.0	<i>173.0</i>	<i>10.0</i>	<i>2.82</i>
<b>MM709</b>	59.5	68.0	8.5	2.59
	72.0	76.0	4.0	0.39
	85.0	102.0	17.0	0.83
	107.0	114.5	7.5	0.82
	120.5	125.0	4.5	2.93
<b>MM710</b>	<i>no significant results</i>			

Notes: Mineralized intervals are greater than 0.34 g/t Au  
 Higher grade sub-intervals are greater than 10 g/t Au.  
 Assays are not capped.  
 Minimum 3m width and maximum of 5m internal dilution.  
 True widths for mineralized zones are about 60% to 90% of stated down hole interval.  
 This information should be read together with our news release of June 25th, 2015  
 Dyane Marielle Duquette, P.Geo., a Member of APGO and OQG, is Centerra and Premier's qualified person for the purpose of National Instrument 43-101.  
 Tables are current as of June 3rd, 2015.



**Centerra Gold Inc. & Premier Gold Mines**  
**Trans-Canada Property, Hardrock Gold Project**  
**Drill Results**  
 Period January 1st, 2015 to June 3rd, 2015



Hole ID	From (m)	To (m)	Core Length (m)	Au g/t
<b>MM711</b>	22.0	63.0	41.0	1.64
	<i>includes</i> 28.0	29.0	1.0	13.10
	<i>includes</i> 32.9	34.0	1.1	14.70
	<i>includes</i> 56.0	57.0	1.0	10.20
	73.0	86.1	13.1	11.96
	<i>includes</i> 75.0	76.0	1.0	21.10
	<i>includes</i> 78.0	80.6	2.6	27.60
	<i>includes</i> 83.5	86.1	2.6	19.15
	94.5	98.0	3.5	0.40
	109.0	130.4	21.4	1.57
	<i>includes</i> 129.0	130.4	1.4	15.00
	138.3	146.2	7.9	7.12
	<i>includes</i> 138.3	139.6	1.3	22.90
	<i>includes</i> 140.2	141.6	1.4	17.80
	154.5	169.5	15.0	2.66
186.3	193.0	6.7	0.47	
<b>MM712</b>	20.0	33.7	13.7	8.11
	<i>includes</i> 21.0	24.1	3.1	16.10
	32.1	33.7	1.6	26.30
	53.0	57.0	4.0	0.40
	70.0	79.5	9.5	1.80
<b>MM713</b>	70.5	75.0	4.5	0.33
<b>MM714</b>	<i>no significant results</i>			
<b>MM715</b>	84.0	87.0	3.0	4.46
<b>MM716</b>	<i>no significant results</i>			
<b>MM717</b>	<i>Assays Pending</i>			
<b>MM718</b>	<i>Assays Pending</i>			
<b>MM719</b>	186.1	245.4	59.3	2.53
	<i>includes</i> 215.0	216.5	1.5	27.10
	<i>includes</i> 220.0	221.5	1.5	17.80
	<i>includes</i> 224.5	225.5	1.0	11.40
	286.0	289.0	3.0	0.61
	315.5	318.5	3.0	0.59
	324.0	336.5	12.5	0.50
	344.4	352.5	8.1	9.76
	<i>includes</i> 344.4	345.2	0.8	94.00
	368.0	377.4	9.4	0.60
	394.5	397.5	3.0	0.76
	412.5	415.5	3.0	0.73
	425.3	430.2	4.9	1.23
	443.5	477.5	34.0	2.57
	<i>includes</i> 443.5	444.5	1.0	46.00
<i>includes</i> 451.4	452.3	0.9	16.20	
486.5	490.3	3.8	4.90	
<i>includes</i> 489.3	490.3	1.0	18.10	

Notes: Mineralized intervals are greater than 0.34 g/t Au  
 Higher grade sub-intervals are greater than 10 g/t Au.  
 Assays are not capped.  
 Minimum 3m width and maximum of 5m internal dilution.  
 True widths for mineralized zones are about 60% to 90% of stated down hole interval.  
 This information should be read together with our news release of June 25th, 2015  
 Dyane Marielle Duquette, P.Geo., a Member of APGO and OGQ, is Centerra and Premier's qualified person for the purpose of National Instrument 43-101.  
 Tables are current as of June 3rd, 2015.



**Centerra Gold Inc. & Premier Gold Mines**  
**Trans-Canada Property, Hardrock Gold Project**  
**Drill Results**  
 Period January 1st, 2015 to June 3rd, 2015



Hole ID	From (m)	To (m)	Core Length (m)	Au g/t	
<b>MM720</b>	<i>Assays Pending</i>				
<b>MM721</b>	78.5	92.0	13.5	1.10	
	99.0	102.0	3.0	0.39	
	108.0	112.5	4.5	0.50	
	147.0	150.0	3.0	0.49	
	169.9	181.5	11.6	0.39	
	192.0	195.0	3.0	0.51	
	204.0	209.5	5.5	0.90	
	214.0	218.0	4.0	0.58	
	243.5	246.5	3.0	2.54	
	255.5	265.0	9.5	2.54	
<i>includes</i>	255.5	257.0	1.0	13.60	
<b>MM723</b>	13.1	24.0	10.9	4.03	
	<i>includes</i>	18.1	19.5	1.4	22.20
	31.5	39.0	7.5	0.96	
	48.0	57.0	6.2	3.35	
	<i>includes</i>	49.5	50.8	1.3	21.60
	109.0	112.7	3.7	0.41	
	177.0	181.5	4.5	0.33	
	215.5	219.5	4.0	1.55	
	237.5	240.5	3.0	1.16	
	250.5	255.0	4.5	0.99	
	291.0	294.4	3.4	0.42	
	341.5	344.5	3.0	0.61	
	352.5	355.5	3.0	0.60	
388.0	408.0	20.0	0.71		
<b>MM724</b>	<i>QAQC Pending</i>				
<b>MM725</b>	127.0	131.5	4.5	0.70	
	137.9	148.5	10.6	1.79	
	<i>includes</i>	140.5	141.5	1.0	12.20
	180.0	183.0	3.0	0.37	
	217.0	220.0	3.0	0.39	
	227.5	233.5	6.0	2.75	
	238.5	242.0	3.5	2.86	
	259.0	270.5	11.5	1.86	
	<i>includes</i>	259.0	260.0	1.0	15.60
	294.0	300.0	6.0	0.88	
	334.0	341.2	7.2	0.43	
	357.0	361.0	4.0	1.33	
	411.5	420.8	9.3	0.40	
	459.4	470.0	10.6	1.86	
	485.0	489.5	4.5	0.39	
	494.0	497.9	3.9	12.18	
<i>includes</i>	495.5	497.0	1.5	31.20	
505.0	518.5	13.5	0.82		
535.0	538.0	3.0	0.40		

Notes: Mineralized intervals are greater than 0.34 g/t Au  
 Higher grade sub-intervals are greater than 10 g/t Au.  
 Assays are not capped.  
 Minimum 3m width and maximum of 5m internal dilution.  
 True widths for mineralized zones are about 60% to 90% of stated down hole interval.  
 This information should be read together with our news release of June 25th, 2015  
 Dyane Marielle Duquette, P.Geo., a Member of APGO and OGG, is Centerra and Premier's qualified person for the purpose of National Instrument 43-101.  
 Tables are current as of June 3rd, 2015.



**Centerra Gold Inc. & Premier Gold Mines**  
**Trans-Canada Property, Hardrock Gold Project**  
**Drill Results**  
 Period January 1st, 2015 to June 3rd, 2015



Hole ID	From (m)	To (m)	Core Length (m)	Au g/t
<b>MM726</b>	11.0	36.3	25.3	7.71
	<i>includes</i> 26.9	30.0	3.1	47.62
	<i>includes</i> 31.0	32.0	1.0	26.60
<b>MM727</b>	13.0	19.0	6.0	0.73
	30.0	33.0	3.0	1.02
<b>MM728</b>	32.0	35.0	3.0	0.63
	118.5	124.5	6.0	0.38
	357.5	361.5	4.0	1.57
	389.3	392.5	3.2	3.34
	<i>includes</i> 389.3	390.2	0.9	10.30
	399.0	405.0	6.0	0.37
	418.0	421.0	3.0	0.41
	453.0	461.5	8.5	0.78
	467.5	477.1	9.6	5.48
	470.3	471.3	1.0	47.50
	500.5	511.0	10.5	0.43
	542.0	547.7	5.7	1.42
	557.0	569.0	12.0	1.55
	586.0	620.5	34.5	0.90
628.0	650.0	22.0	0.78	
691.0	694.0	3.0	0.55	
<b>MM729</b>	<i>no significant results</i>			
<b>MM730</b>	203.5	215.5	12.0	0.39
	272.5	277.0	4.5	0.73
	284.5	288.0	3.5	0.42
<b>MM731</b>	221.8	225.0	3.2	0.41
	381.0	385.0	4.0	0.59
	398.0	404.0	6.0	1.23
	416.0	420.5	4.5	0.59
	438.5	442.5	4.0	0.55
	480.5	483.5	3.0	0.67
	491.0	501.5	10.5	0.59
	527.0	533.0	6.0	0.53
	549.5	554.5	5.0	2.60
	<i>includes</i> 552.0	553.0	1.0	10.90
	576.2	587.0	10.8	1.23
	590.0	593.0	3.0	5.34
	<i>includes</i> 591.5	593.0	1.5	10.60
	599.0	614.5	15.5	2.15
620.5	623.5	3.0	1.10	
632.5	662.5	30.0	1.25	

Notes: Mineralized intervals are greater than 0.34 g/t Au  
 Higher grade sub-intervals are greater than 10 g/t Au.  
 Assays are not capped.  
 Minimum 3m width and maximum of 5m internal dilution.  
 True widths for mineralized zones are about 60% to 90% of stated down hole interval.  
 This information should be read together with our news release of June 25th, 2015  
 Dyane Marielle Duquette, P.Geol., a Member of APGO and OGG, is Centerra and Premier's qualified person for the purpose of National Instrument 43-101.  
 Tables are current as of June 3rd, 2015.



**Centerra Gold Inc. & Premier Gold Mines**  
**Trans-Canada Property, Hardrock Gold Project**  
**Drill Results**  
 Period January 1st, 2015 to June 3rd, 2015



Hole ID	From (m)	To (m)	Core Length (m)	Au g/t
<b>MM732</b>	250.5	256.5	6.0	0.72
	267.0	270.0	3.0	1.14
	313.5	322.0	8.5	3.45
	<i>includes</i> 320.8	322.0	1.2	10.00
	326.0	329.5	3.5	1.93
	357.5	361.5	4.0	0.82
	370.0	380.5	10.5	0.55
	385.0	389.5	4.5	0.57
	403.5	409.5	6.0	0.51
	439.5	442.5	3.0	1.15
	480.5	483.5	3.0	0.58
	504.5	507.5	3.0	2.43
	529.5	532.5	3.0	0.68
	553.0	556.0	3.0	0.75
560.0	563.0	3.0	0.78	
<b>MM733</b>	187.0	190.0	3.0	0.37
	222.0	228.0	6.0	0.41
	266.0	273.0	7.0	0.43
	312.0	315.0	3.0	0.45
	330.5	337.0	6.5	1.00
<b>MM734</b>	30.5	33.5	3.0	1.22
<b>MM735</b>	35.0	39.5	4.5	0.50
	75.0	79.0	4.0	1.04
	134.5	137.5	3.0	1.39
	140.5	143.5	3.0	0.37
	290.0	293.0	3.0	0.46
	332.0	339.4	7.4	6.86
	<i>includes</i> 338.0	339.4	1.4	31.90
	348.0	368.0	20.0	1.53
376.5	390.5	14.0	0.90	
<b>MM736</b>	63.5	69.5	6.0	0.76
	83.0	86.0	3.0	0.53
	91.0	97.0	6.0	0.95
	124.8	129.0	4.2	0.39
	148.5	152.5	4.0	0.62
	197.0	200.0	3.0	0.92
<b>MM737</b>	71.0	74.0	3.0	0.41
	280.0	283.0	3.0	0.39
	339.0	342.0	3.0	0.40
	362.5	370.9	8.4	2.24
	374.0	37.0	3.0	0.55
	381.2	385.0	3.8	1.46
<b>MM738</b>	212.5	215.5	3.0	0.37
	245.0	248.5	3.5	0.43
	274.5	280.0	5.5	1.44
	289.0	292.0	3.0	1.30
	358.0	363.0	5.0	1.81
	408.0	415.5	7.5	0.55
	439.0	443.5	4.5	1.33
454.0	458.0	4.0	1.69	
<b>MM739</b>	QAQC Pending			

Notes: Mineralized intervals are greater than 0.34 g/t Au  
 Higher grade sub-intervals are greater than 10 g/t Au.  
 Assays are not capped.  
 Minimum 3m width and maximum of 5m internal dilution.  
 True widths for mineralized zones are about 60% to 90% of stated down hole interval.  
 This information should be read together with our news release of June 25th, 2015  
 Dyane Marielle Duquette, P.Geo., a Member of APGO and OGG, is Centerra and Premier's qualified person for the purpose of National Instrument 43-101.  
 Tables are current as of June 3rd, 2015.



**Centerra Gold Inc. & Premier Gold Mines  
Trans-Canada Property, Hardrock Gold Project  
Drill Results**



Period January 1st, 2015 to June 3rd, 2015

Hole ID	From (m)	To (m)	Core Length (m)	Au g/t
<b>MM740</b>	170.5	189.0	18.5	2.57
	<i>includes</i> 187.5	189.0	1.5	20.10
	201.5	204.5	3.0	0.96
<b>MM741</b>	51.0	54.0	3.0	0.39
	70.5	75.0	4.5	0.49
	87.0	90.0	3.0	0.51
	111.5	114.5	3.0	2.05
	158.0	161.0	3.0	3.89
	<i>includes</i> 158.0	159.0	1.0	10.30
	236.0	239.0	3.0	4.66
<b>MM742</b>	262.0	270.5	8.5	0.82
	35.0	44.5	9.5	0.60
<b>MM743</b>	19.0	22.0	3.0	9.56
	<i>includes</i> 19.0	20.5	1.5	15.50
	31.0	34.7	3.7	19.50
	<i>includes</i> 31.0	32.5	1.5	37.00
	<i>includes</i> 33.5	34.7	1.2	12.70
	42.9	62.3	19.4	2.16
<b>MM744</b>	68.0	77.0	9.0	0.82
	<i>Assays Pending</i>			
<b>MM745</b>	4.5	8.7	4.2	0.87
	33.5	38.0	4.5	0.44
<b>MM746</b>	<i>QAQC Pending</i>			
<b>MM747</b>	19.0	26.0	7.0	2.26
	<i>includes</i> 19.0	20.0	1.0	13.20
	32.0	36.5	4.5	0.49
	46.0	53.0	7.0	2.53
	65.0	71.0	6.0	0.37
	95.0	98.1	3.1	0.67
<b>MM748</b>	105.5	109.0	3.5	1.97
	40.0	44.5	4.5	0.51
<b>MM749</b>	68.5	73.0	4.5	0.82
	49.5	53.5	4.0	1.39
<b>MM750</b>	34.5	38.4	3.9	0.39
<b>MM751</b>	<i>Assays Pending</i>			
<b>MM752</b>	86.0	90.5	4.5	0.41
	309.5	315.6	6.1	0.47
	321.5	324.5	3.0	0.78
	332.1	352.5	20.4	1.55
	361.0	370.6	9.6	0.55
	39.5	402.9	3.4	30.06
	<i>includes</i> 401.9	402.9	1.0	101.00
	415.0	418.0	3.0	1.97
<b>MM753</b>	423.9	427.0	3.1	0.99
	<i>Assays Pending</i>			
<b>MM754</b>	<i>Assays Pending</i>			
<b>MM754A</b>	<i>No Samples - Missed Target</i>			
<b>MM754B</b>	<i>No Samples - Missed Target</i>			

Notes: Mineralized intervals are greater than 0.34 g/t Au

Higher grade sub-intervals are greater than 10 g/t Au.

Assays are not capped.

Minimum 3m width and maximum of 5m internal dilution.

True widths for mineralized zones are about 60% to 90% of stated down hole interval.

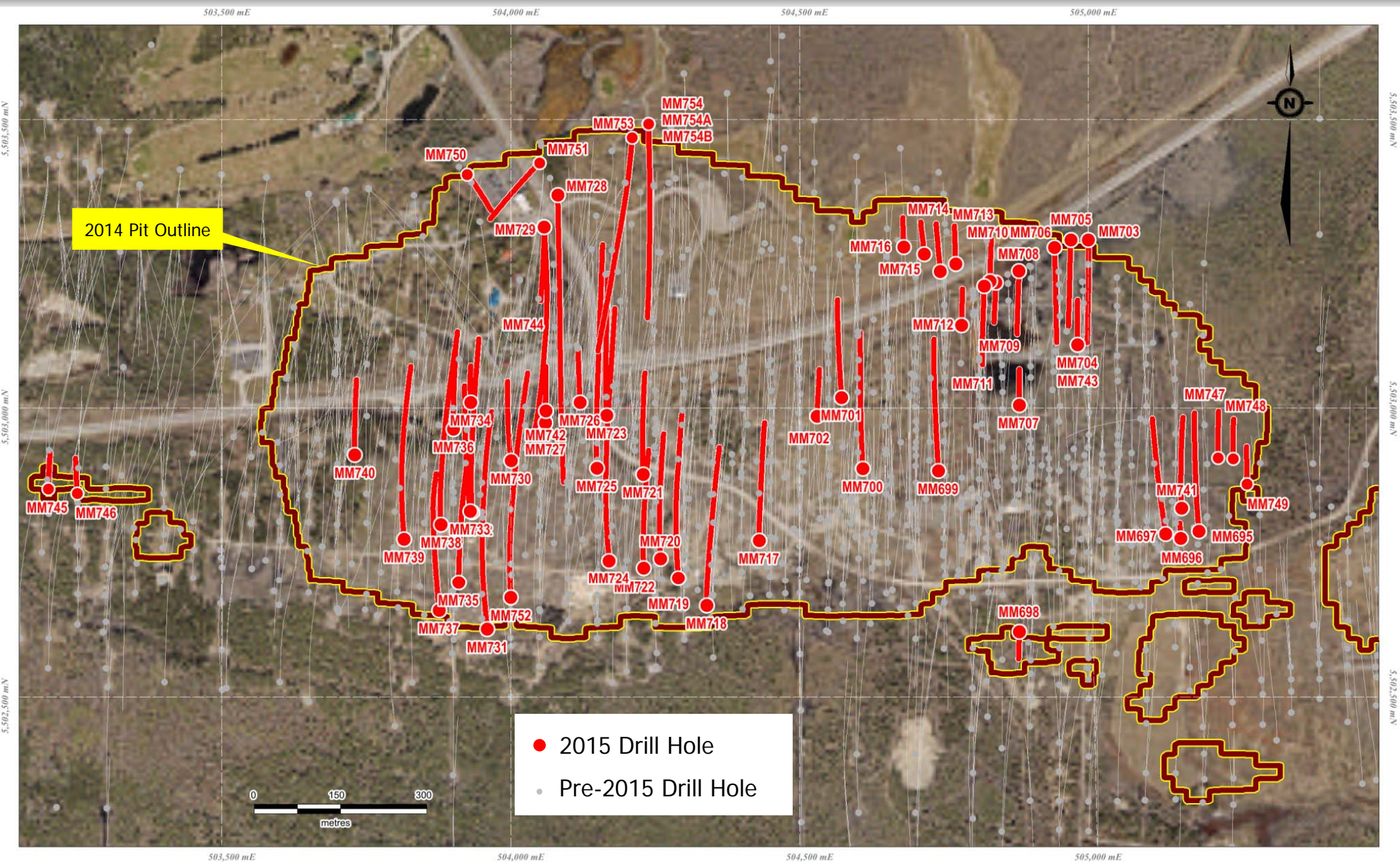
This information should be read together with our news release of June 25th, 2015

Dyane Marielle Duquette, P.Geo., a Member of APGO and OGG, is Centerra and Premier's qualified person for the purpose of National Instrument 43-101.

Tables are current as of June 3rd, 2015.



# Hardrock Gold Project – Drill Hole Location Map



This information should be read together with our news release of June 25<sup>th</sup>, 2015.  
Dyane Marielle Duquette, P.Geo., a Member of APGO and OGQ, is Centerra and Premier's qualified person for the purpose of National Instrument 43-101.