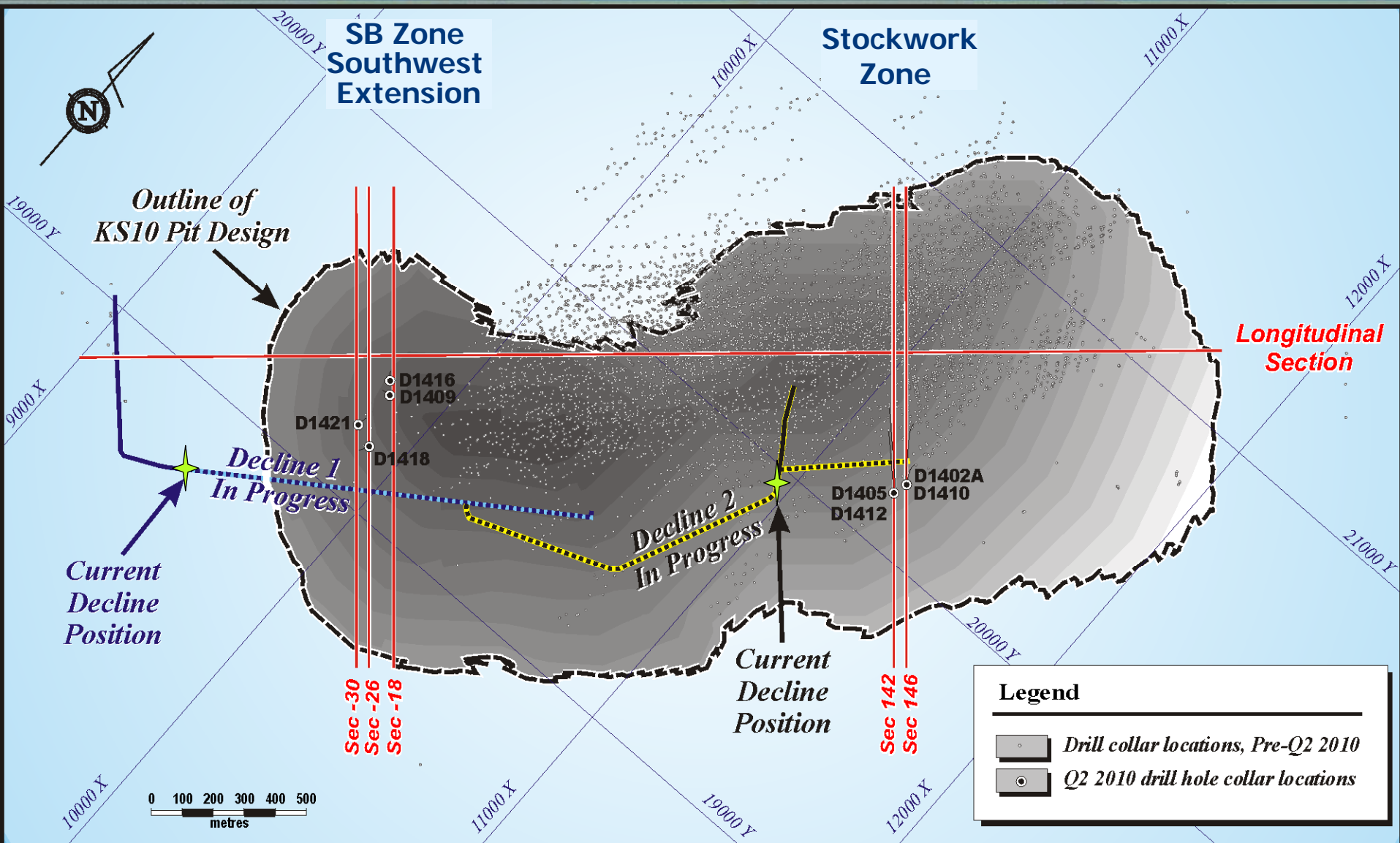


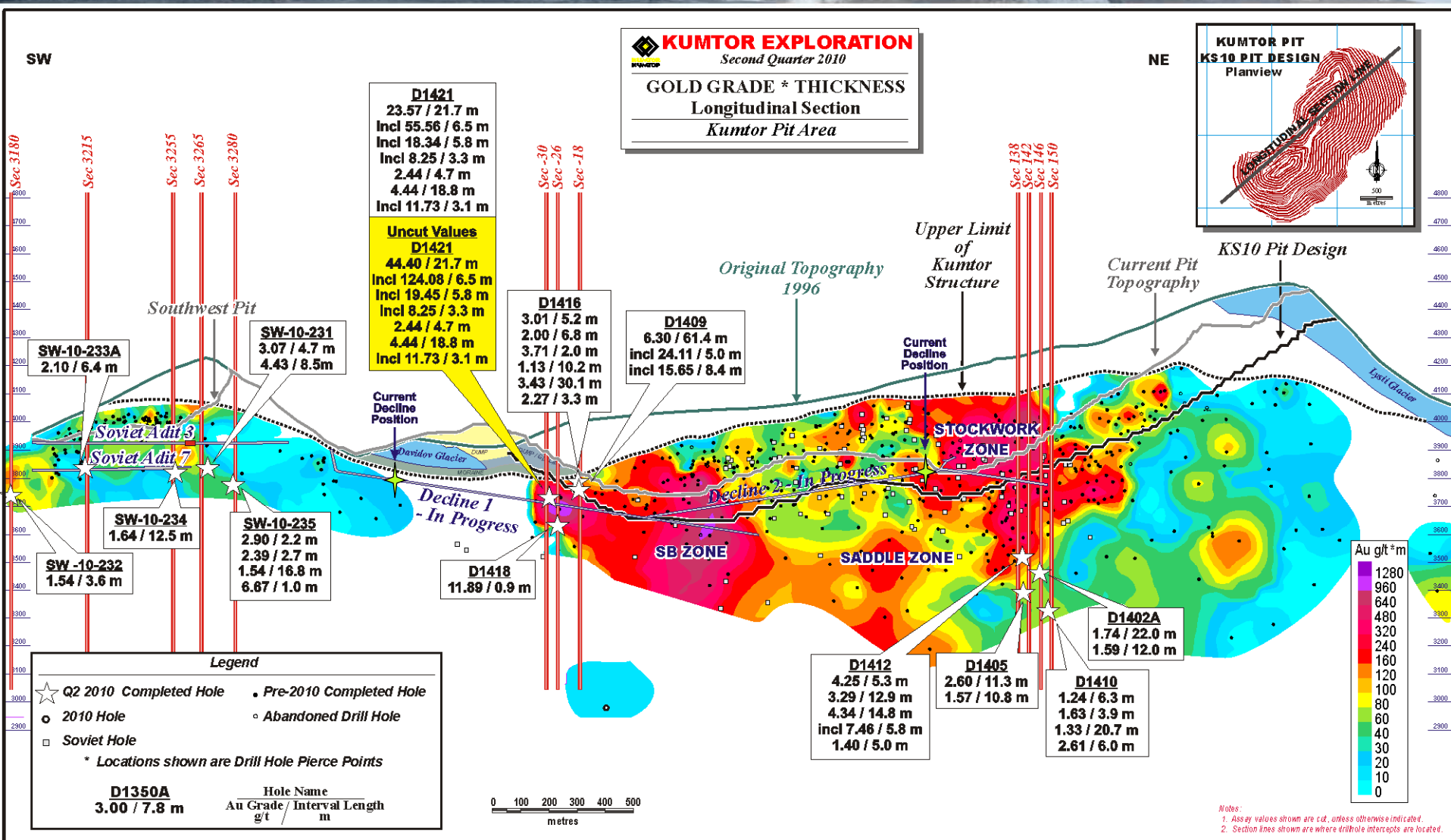
# Kumtor – Q2 2010

## Central Pit Drillhole Location Plan



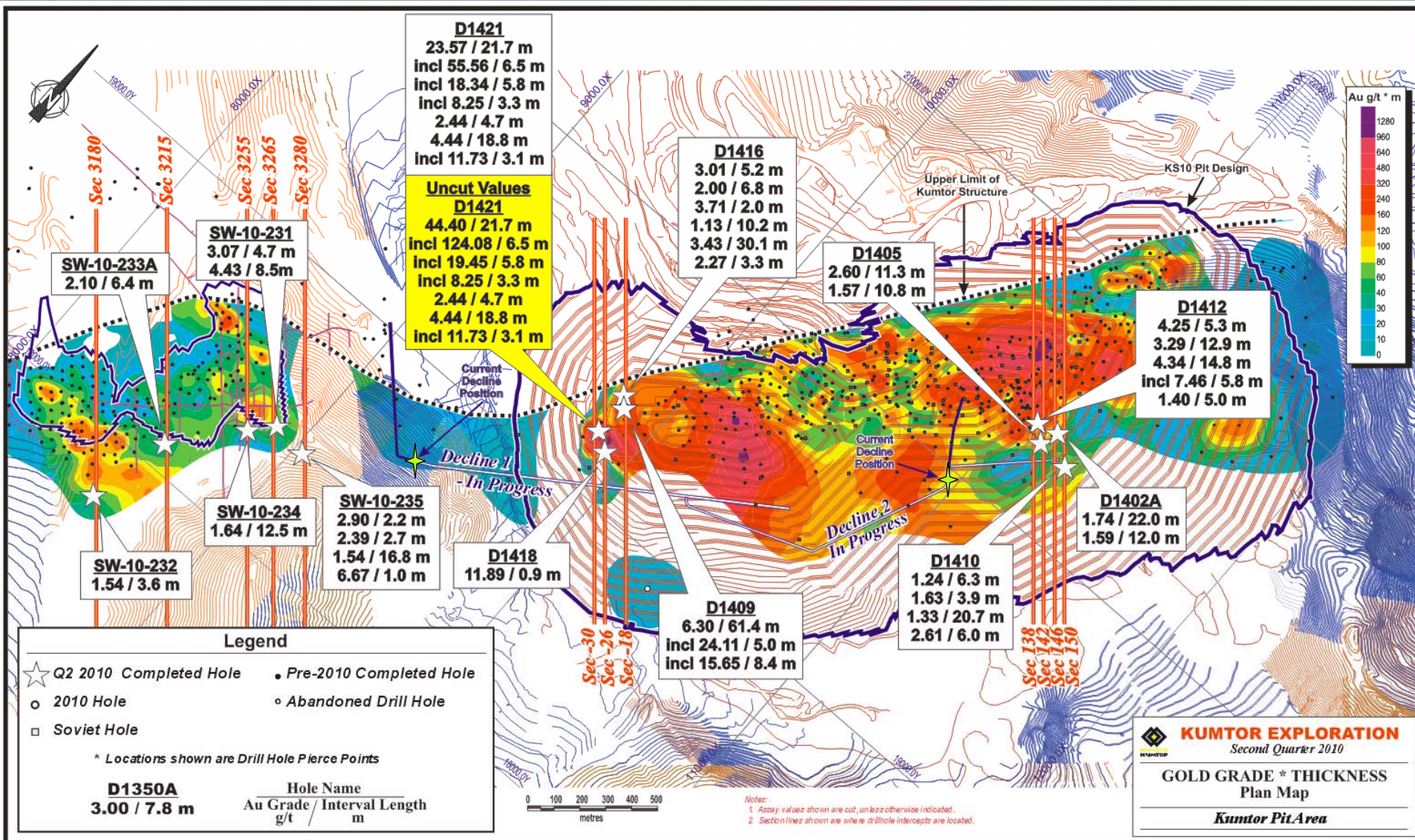
# Kumtor – Q2 2010

## Central Pit Longitudinal Section



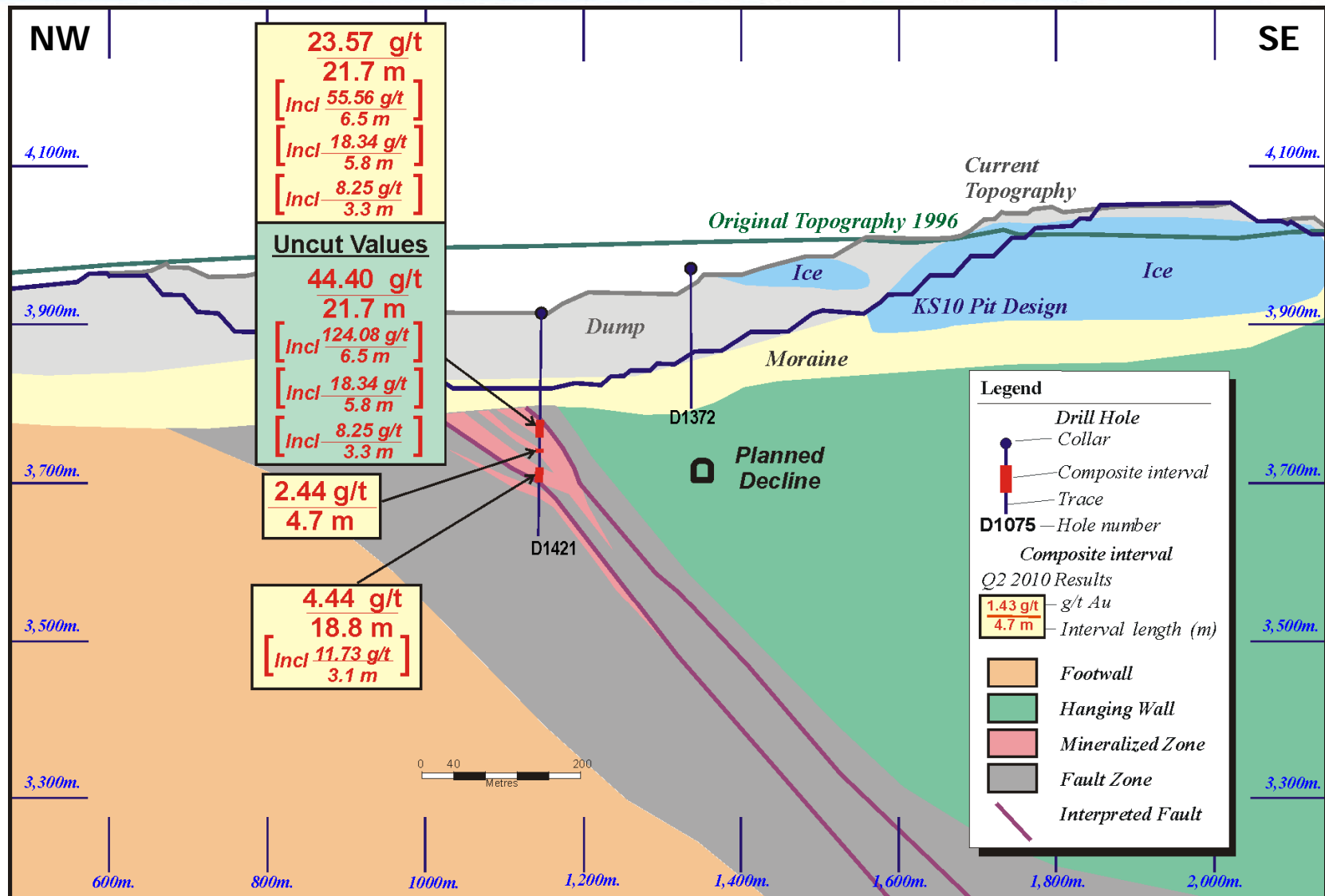


# Kumtor – Q2 2010 Central Pit Planview



# Kumtor – Q2 2010

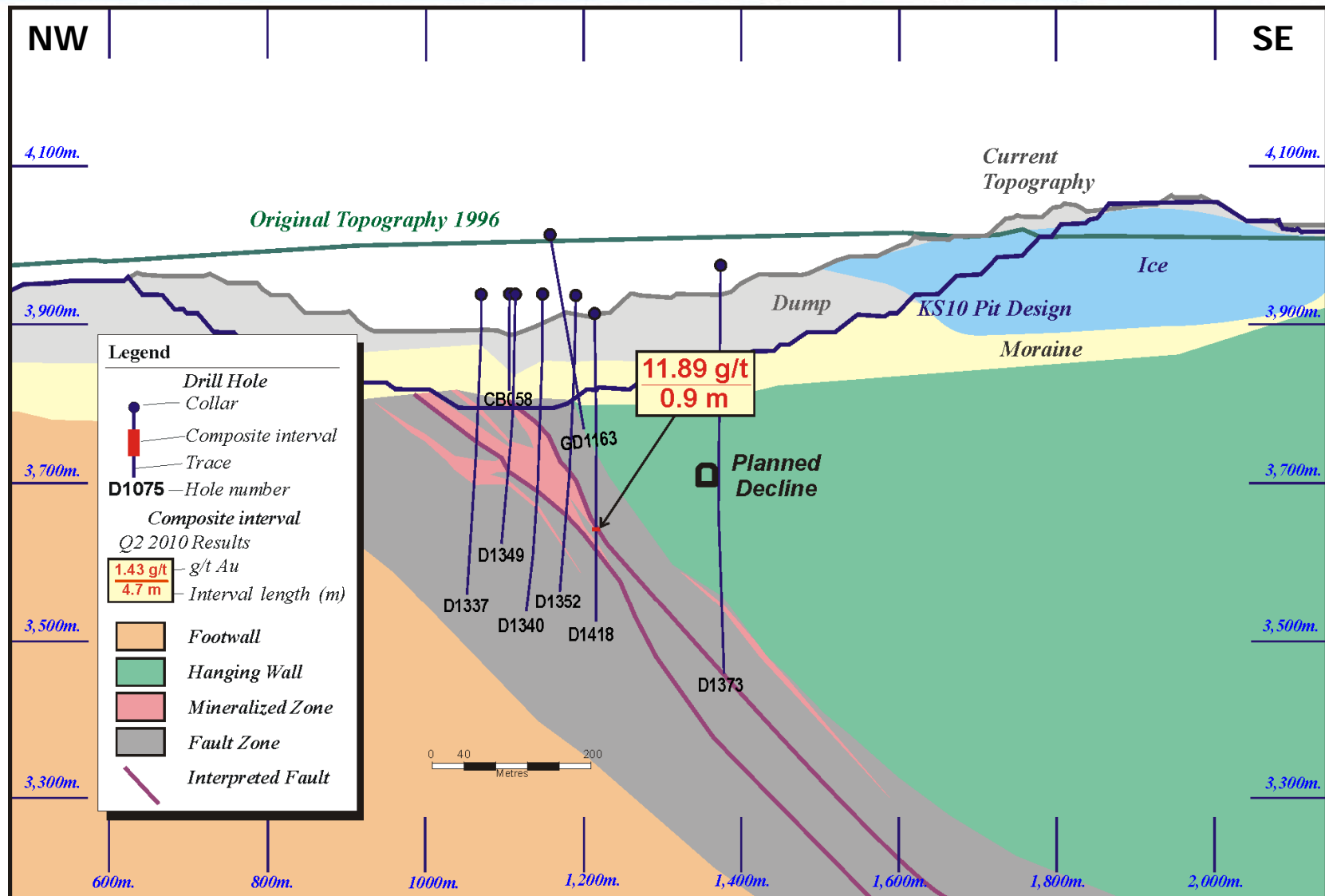
## Central Pit Section -30





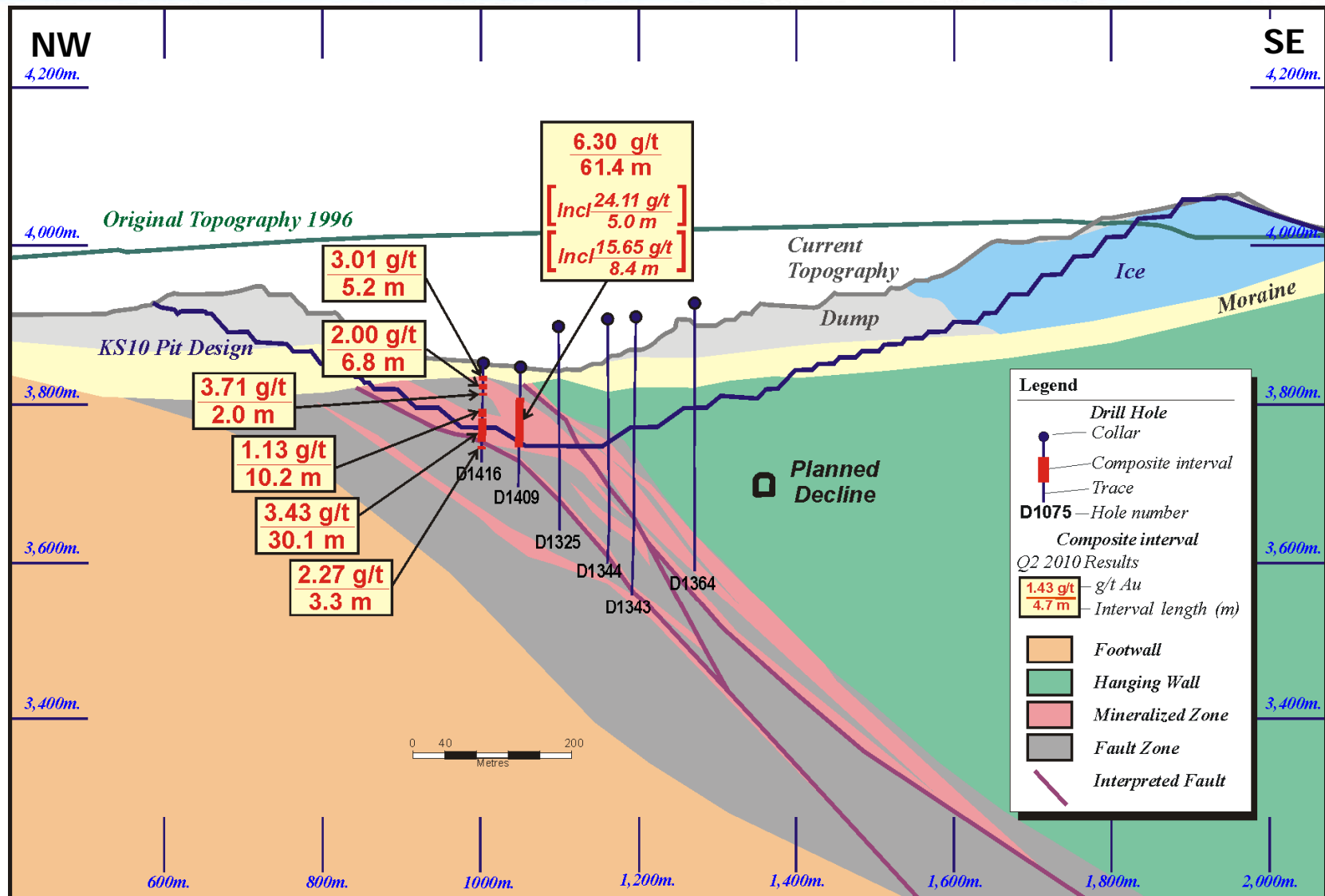
# Kumtor – Q2 2010

## Central Pit Section -26



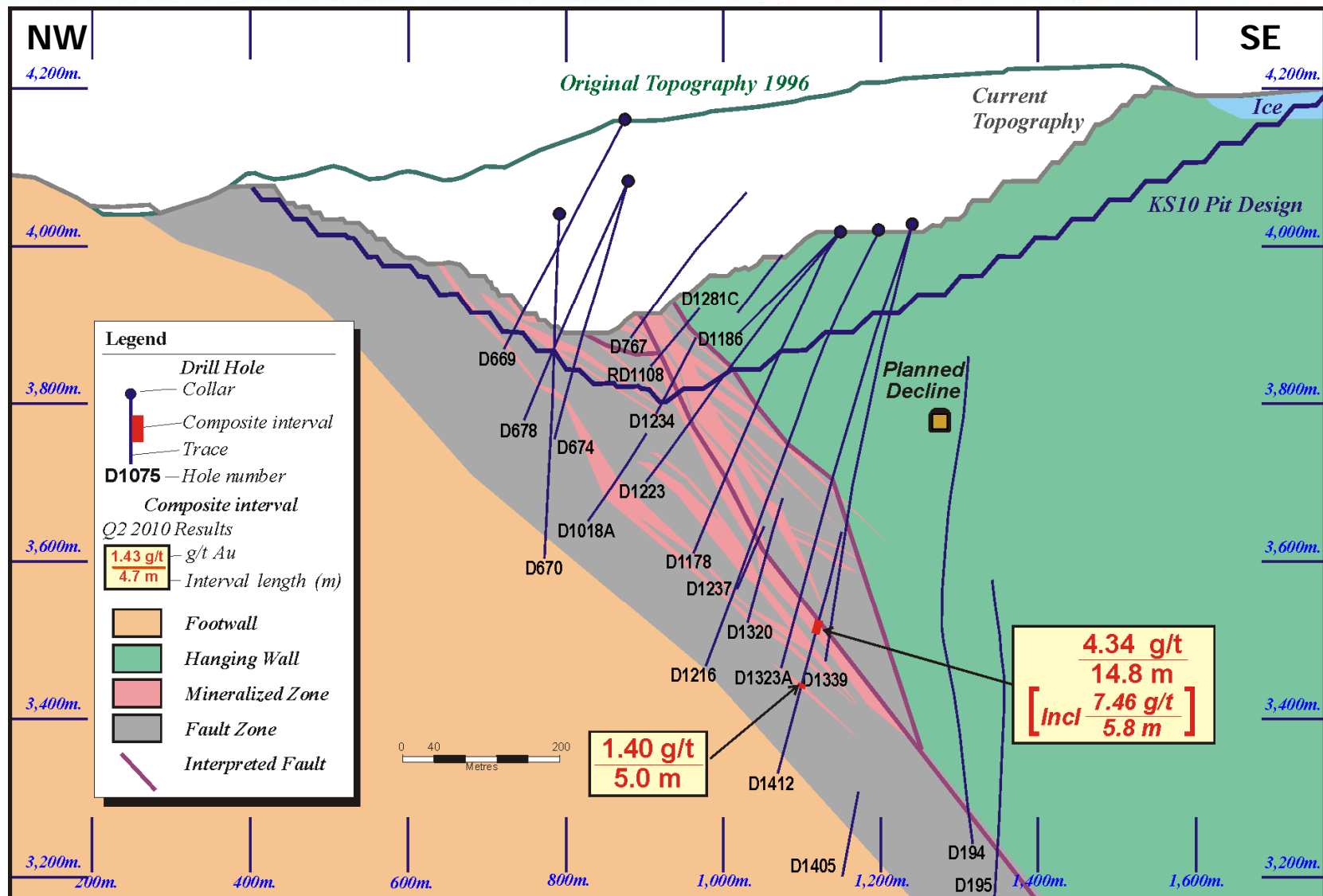
# Kumtor – Q2 2010

## Central Pit Section -18



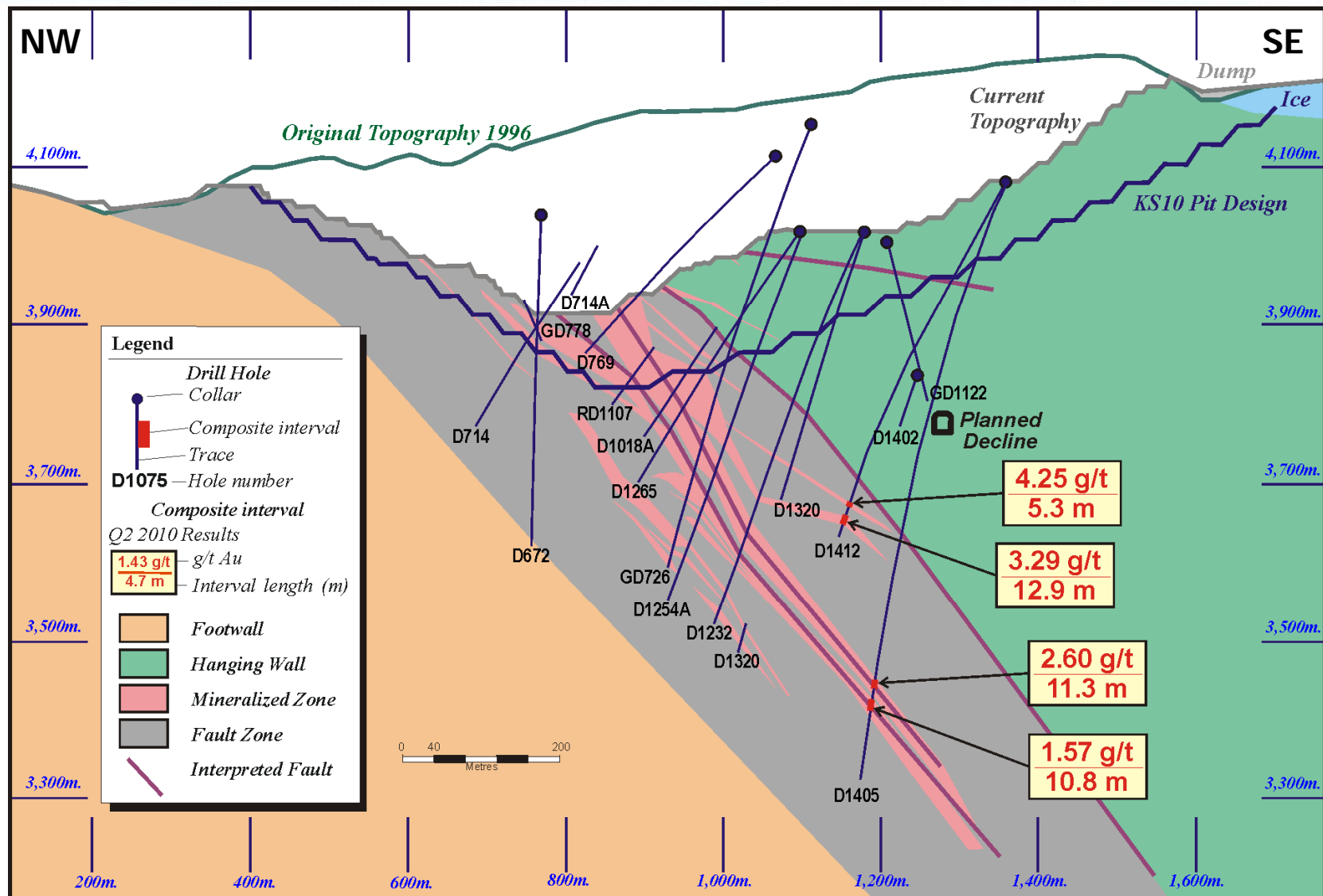
# Kumtor – Q2 2010

## Central Pit Section 138



# Kumtor – Q2 2010

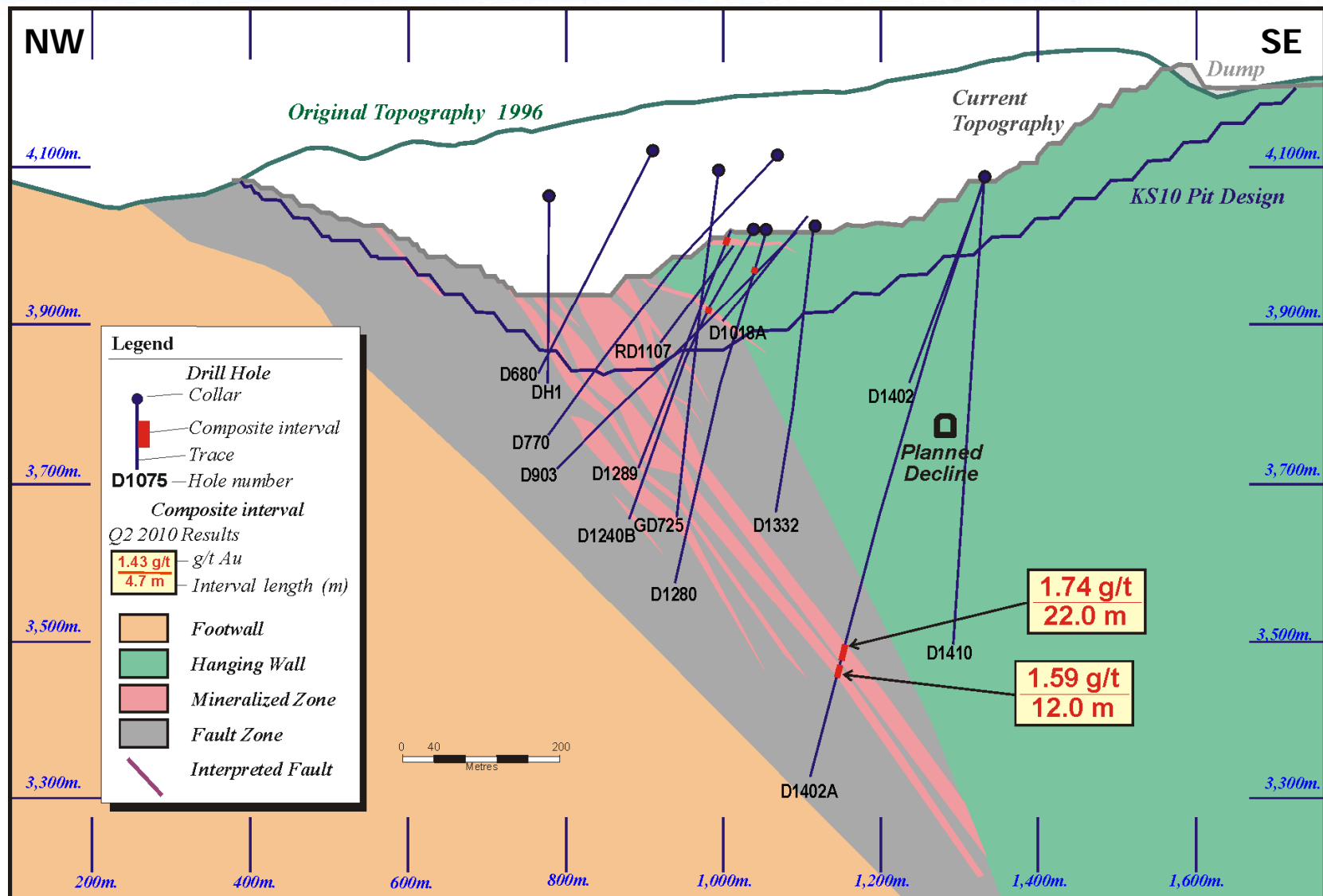
## Central Pit Section 142





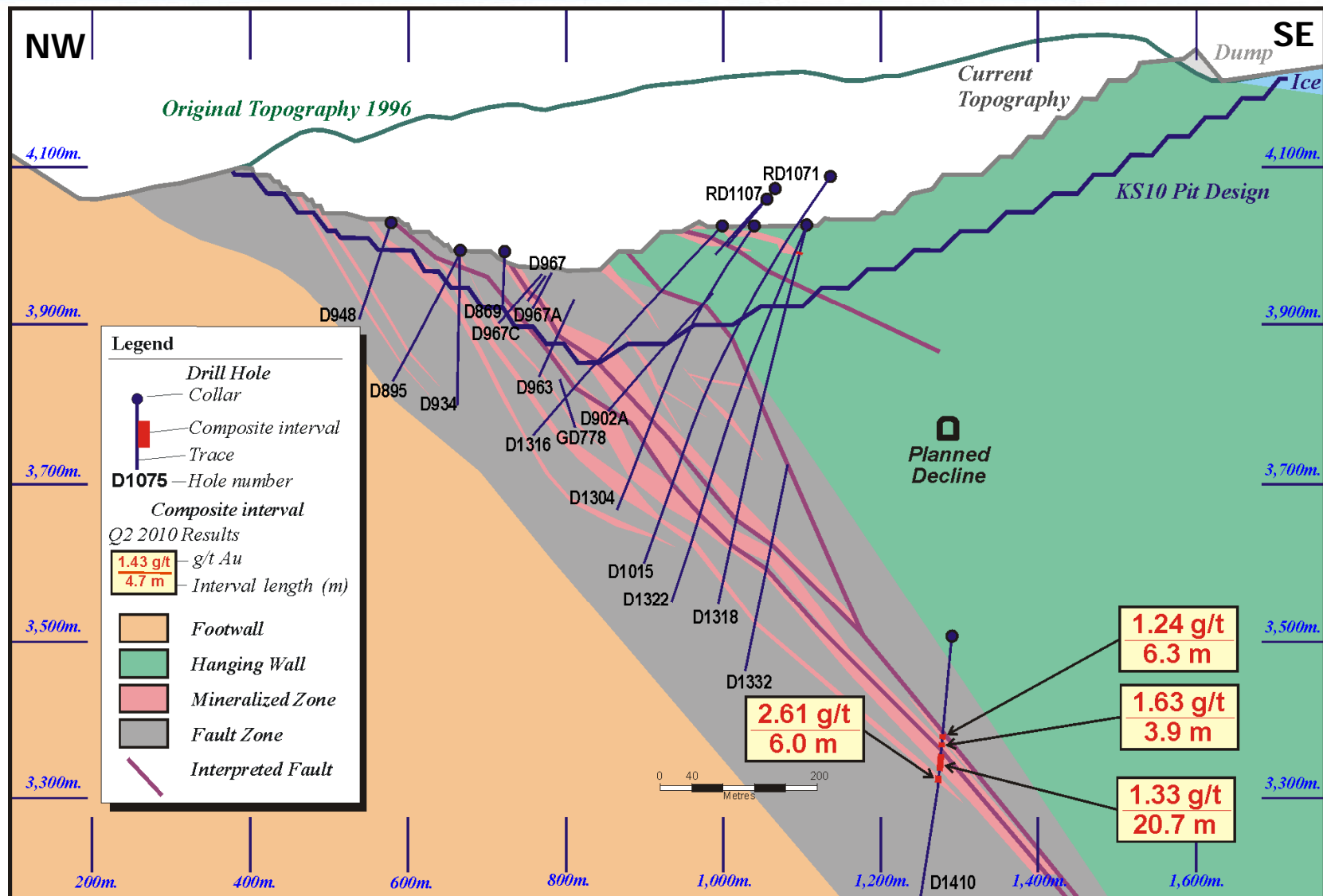
# Kumtor – Q2 2010

## Central Pit Section 146



# Kumtor – Q2 2010

## Central Pit Section 150





# Centerra Gold Inc. 2010 Drilling Results

Period April 1st, 2010 to June 30th, 2010

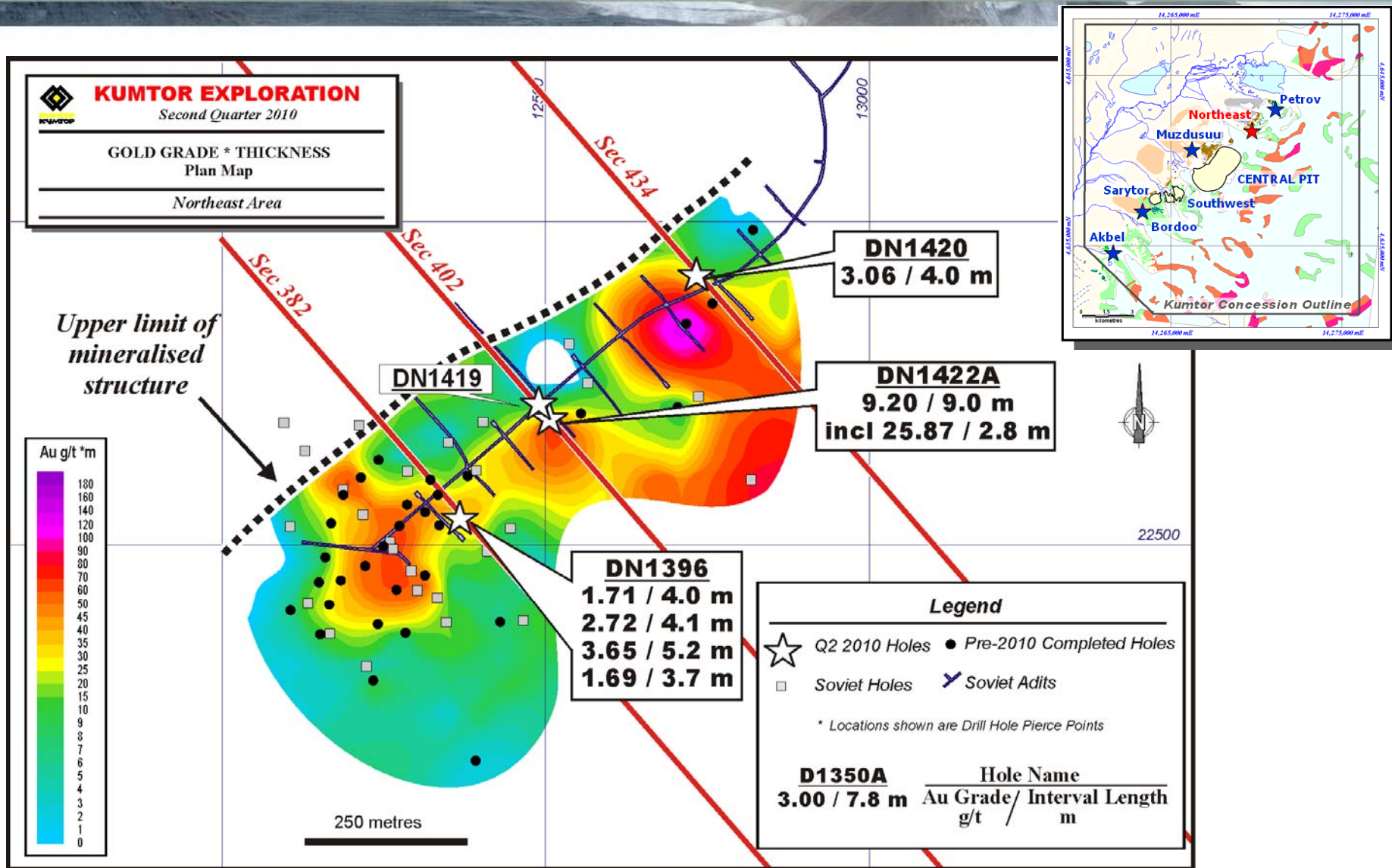
Page 1 of 1

Kumtor Central Pit Area						
Drill Hole	Location	Drill Section	From (m)	To (m)	Core Length (m)	Au (g/t)
D1402A	Stockwork Zone	146	615.0	637.0	22.0	1.74
			642.2	654.2	12.0	1.59
D1405	Stockwork Zone	142	655.2	666.5	11.3	2.60
			682.5	693.3	10.8	1.57
D1409	SB Extension	-18	40.8	102.2	61.4	6.30
			<i>includes</i> 40.8	45.8	5.0	24.11
			<i>includes</i> 57.1	65.5	8.4	15.65
D1410	Stockwork Zone	150	715.5	721.8	6.3	1.24
			727.7	731.6	3.9	1.63
			740.0	760.7	20.7	1.33
			769.8	775.8	6.0	2.61
D1412	Stockwork Zone	138 / 142	453.7	459.0	5.3	4.25
			469.7	482.6	12.9	3.29
			612.5	627.3	14.8	4.34
			<i>includes</i> 614.0	619.8	5.8	7.46
D1416	SB Extension	-18	694.5	699.5	5.0	1.40
			17.0	22.2	5.2	3.01
			26.8	33.6	6.8	2.00
			38.4	40.4	2.0	3.71
			57.6	67.8	10.2	1.13
			70.0	100.1	30.1	3.43
D1418	SB Extension	-26	105.9	109.2	3.3	2.27
			274.1	275.0	0.9	11.89
D1421	SB Extension	-30	135.5	157.2	21.7	23.57
			<i>includes</i> 135.5	142.0	6.5	55.56
			<i>includes</i> 143.9	149.7	5.8	18.34
			<i>includes</i> 153.2	156.5	3.3	8.25
			171.6	176.3	4.7	2.44
			194.6	213.4	18.8	4.44
			<i>includes</i> 201.2	204.3	3.1	11.73

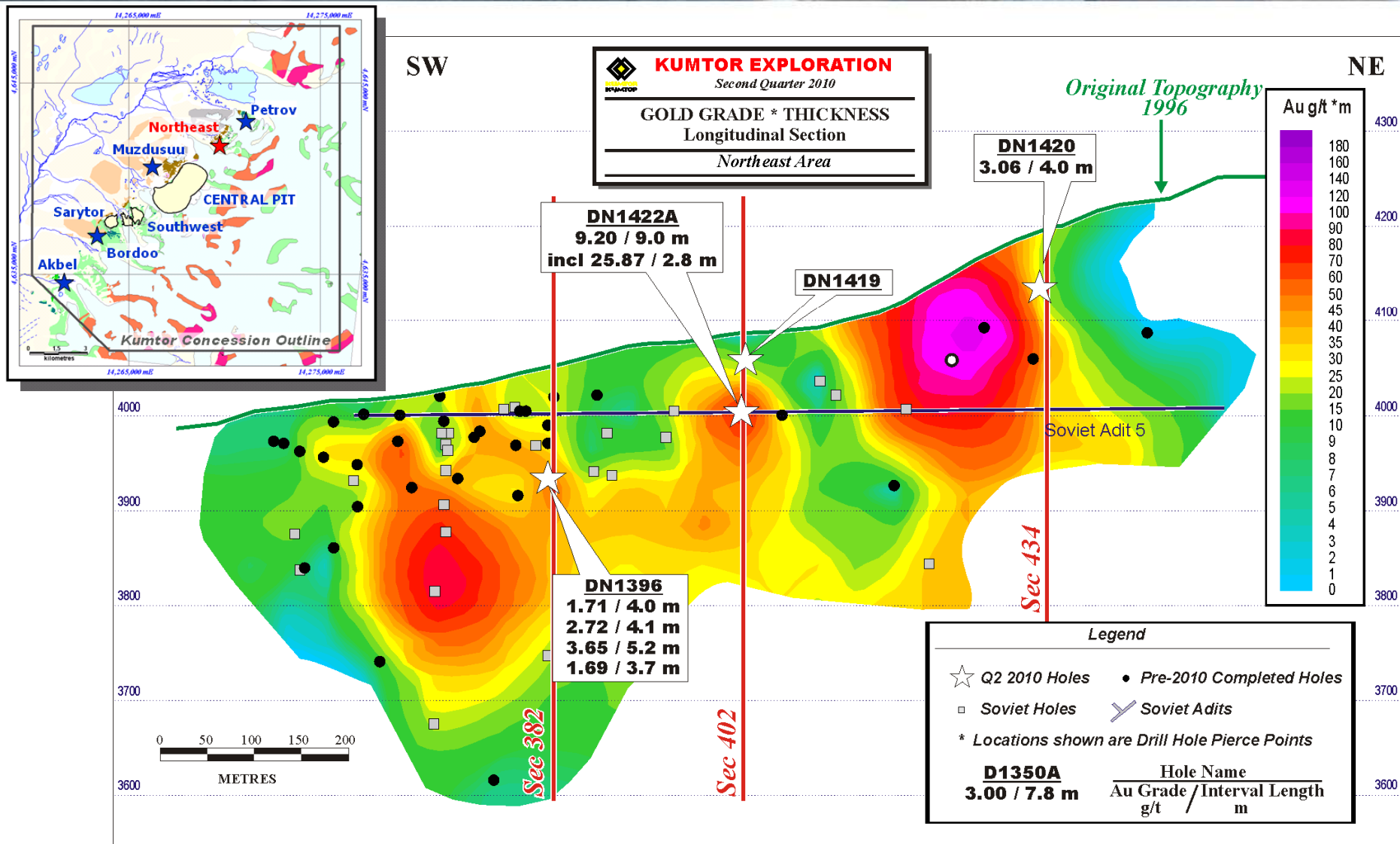
Notes: Significant mineralized intervals are greater than 1.00 g/t Au  
Individual assays are top cut to 60 g/t Au prior to composite calculation  
Lower cut-off for higher grade sub-intervals is 7.0 g/t Au  
True widths for mineralized zones are about 70% to 95% of stated down hole interval  
This information should be read together with our news release of July 30th, 2010. Ian Atkinson, a Certified Professional Geologist, is Centerra's qualified person for the purpose of National Instrument 43-101  
Tables are current as of July 01, 2010.



# Kumtor – Q2 2010 – Northeast Area

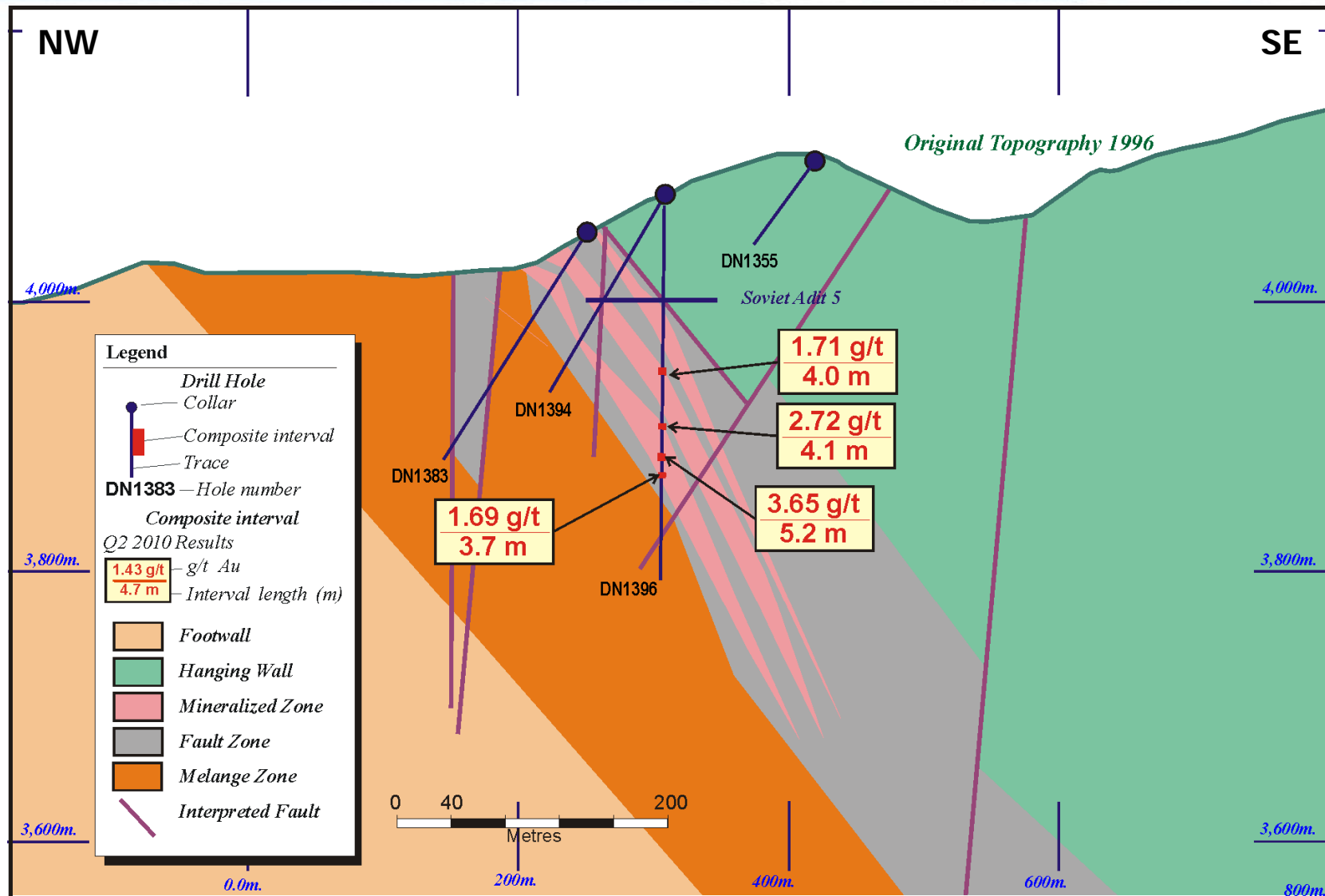


# Kumtor – Q2 2010 – Northeast Area



# Kumtor – Q2 2010

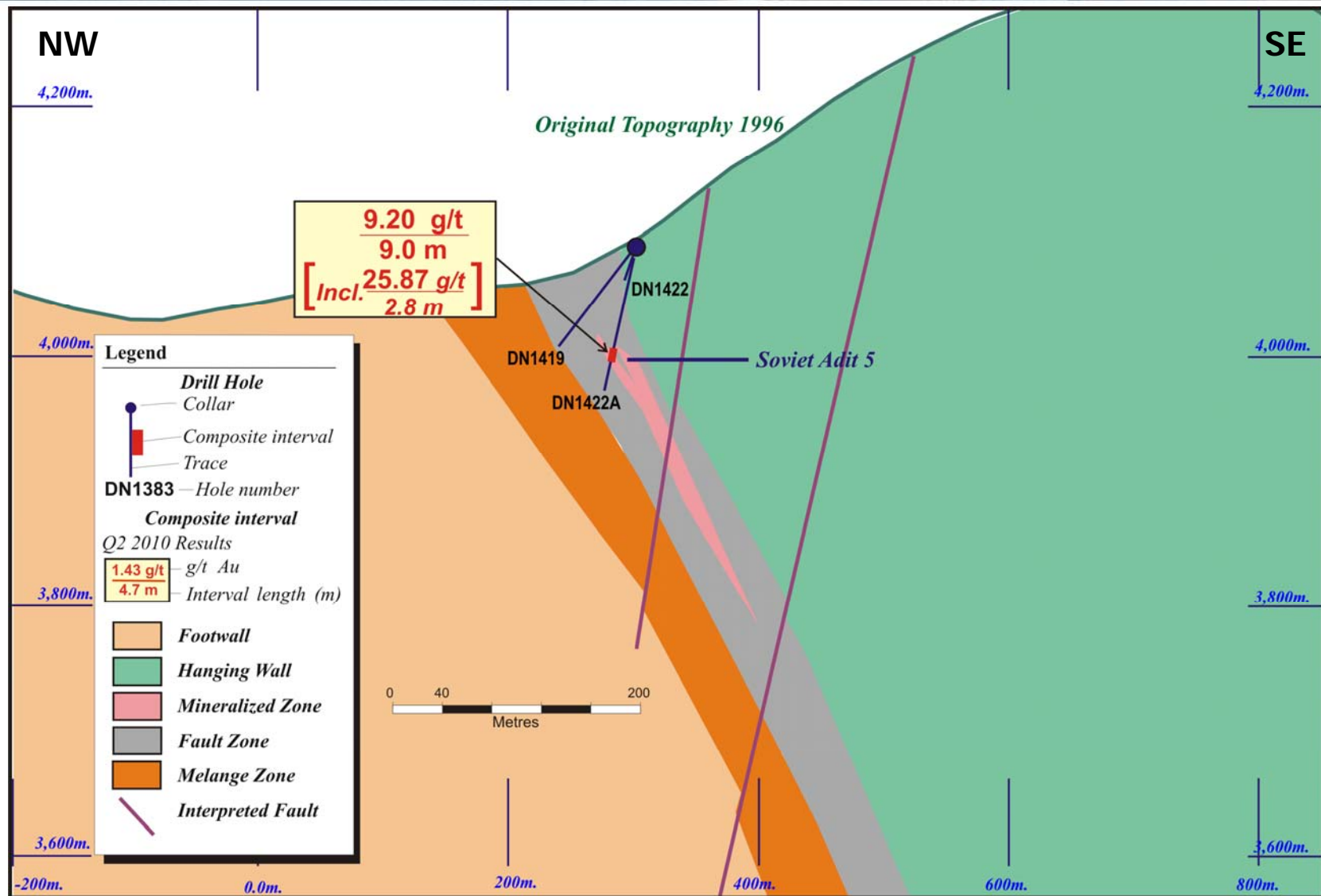
## Northeast Area Section 382





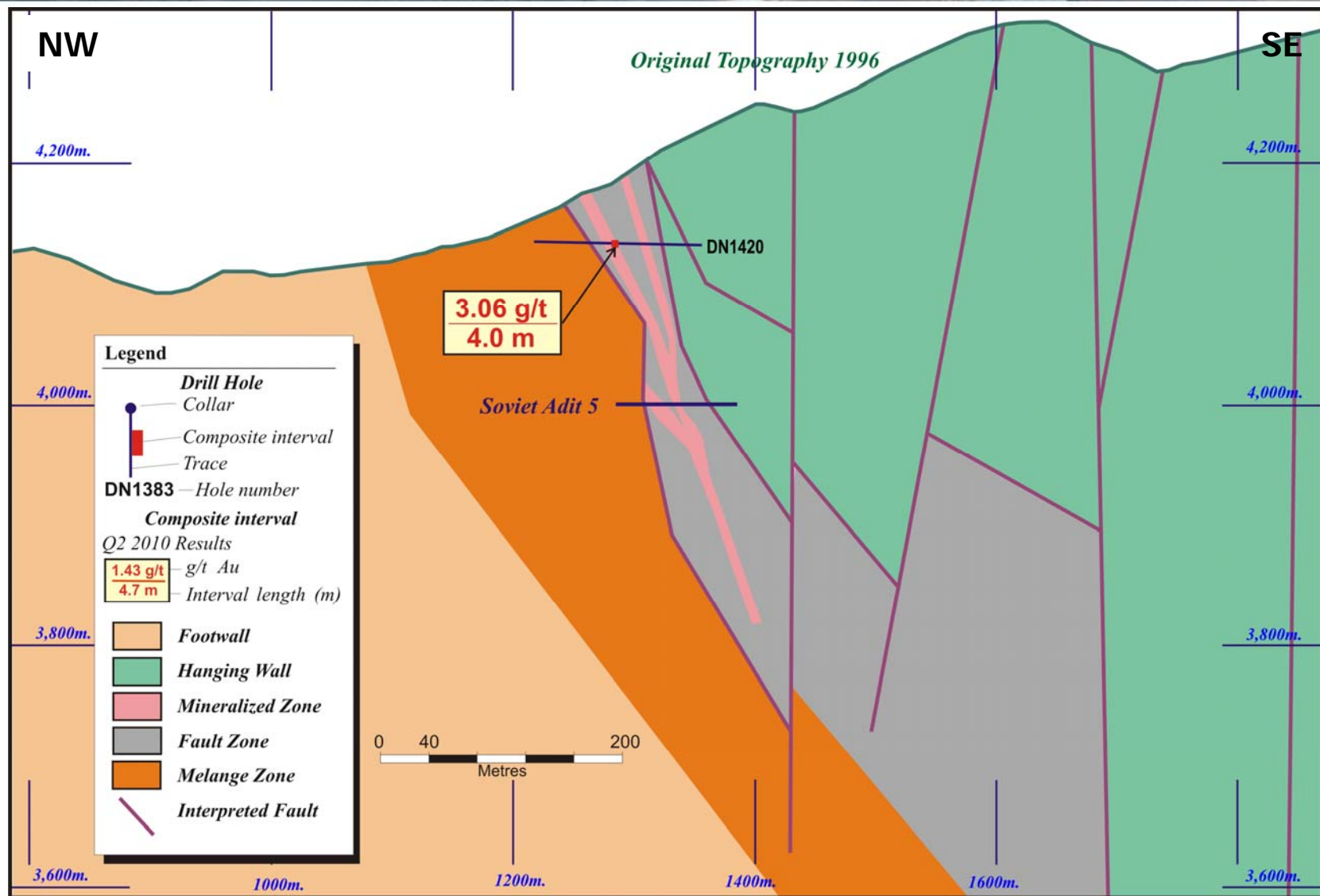
# Kumtor – Q2 2010

## Northeast Area Section 402

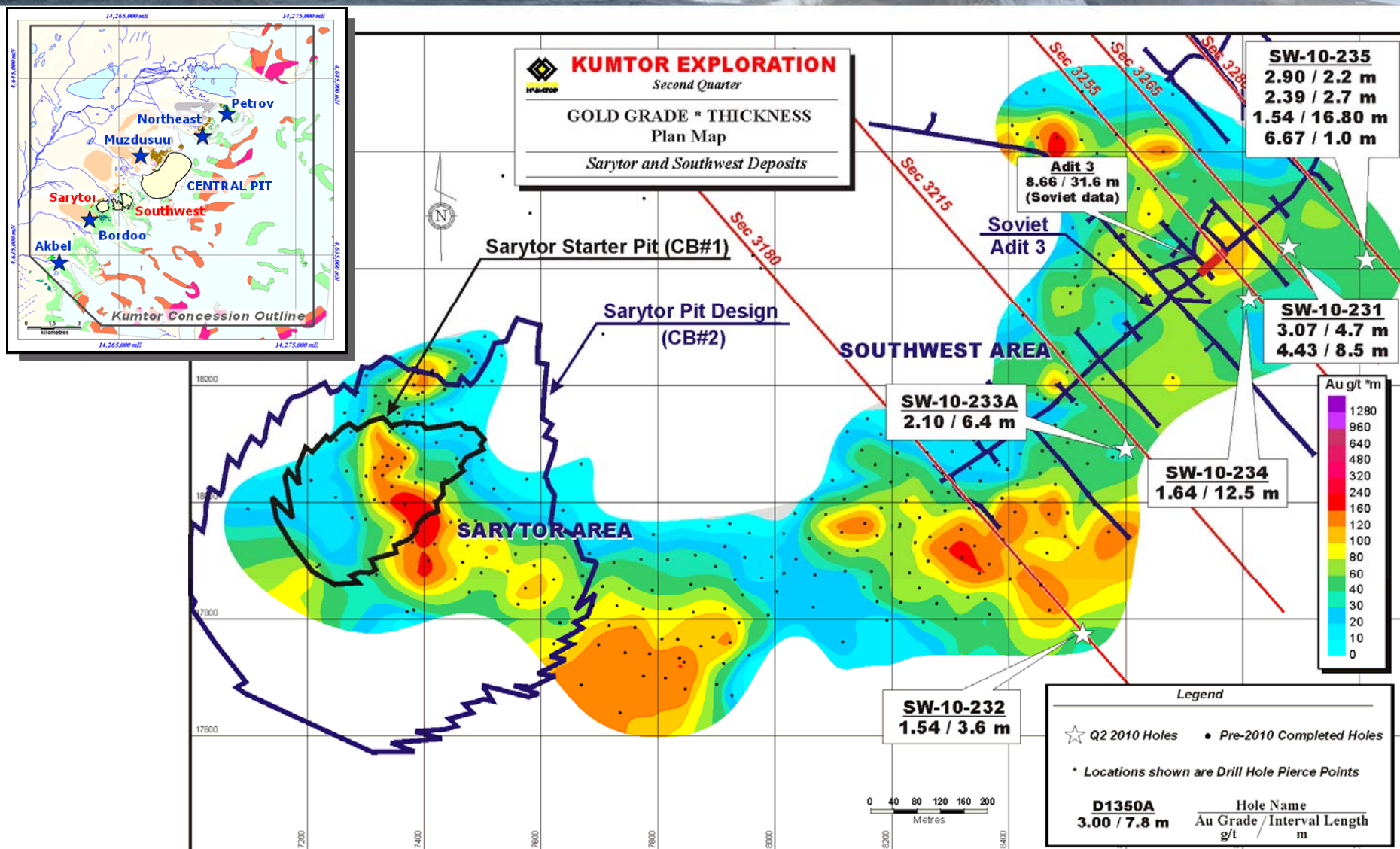


# Kumtor – Q2 2010

## Northeast Area Section 434



# Kumtor – Q2 2010 – Sarytor & Southwest Deposits







# Centerra Gold Inc. - Kumtor 2010 Drilling Results

Period April 1st, 2010 to June 30th, 2010

Page 1 of 1

Northeast Area					
Drill Hole	Drill Section	From (m)	To (m)	Core Length (m)	Au (g/t)
DN1396	382	126.5	130.5	4.0	1.71
		167.6	171.7	4.1	2.72
		189.7	194.9	5.2	3.65
		203.3	207.0	3.7	1.69
DN1419	402	No significant intercepts			
DN1420	430	91.5	95.5	4.0	3.06
DN1422A	402	91.5	100.5	9.0	9.20
		includes 97.7	100.5	2.8	25.87

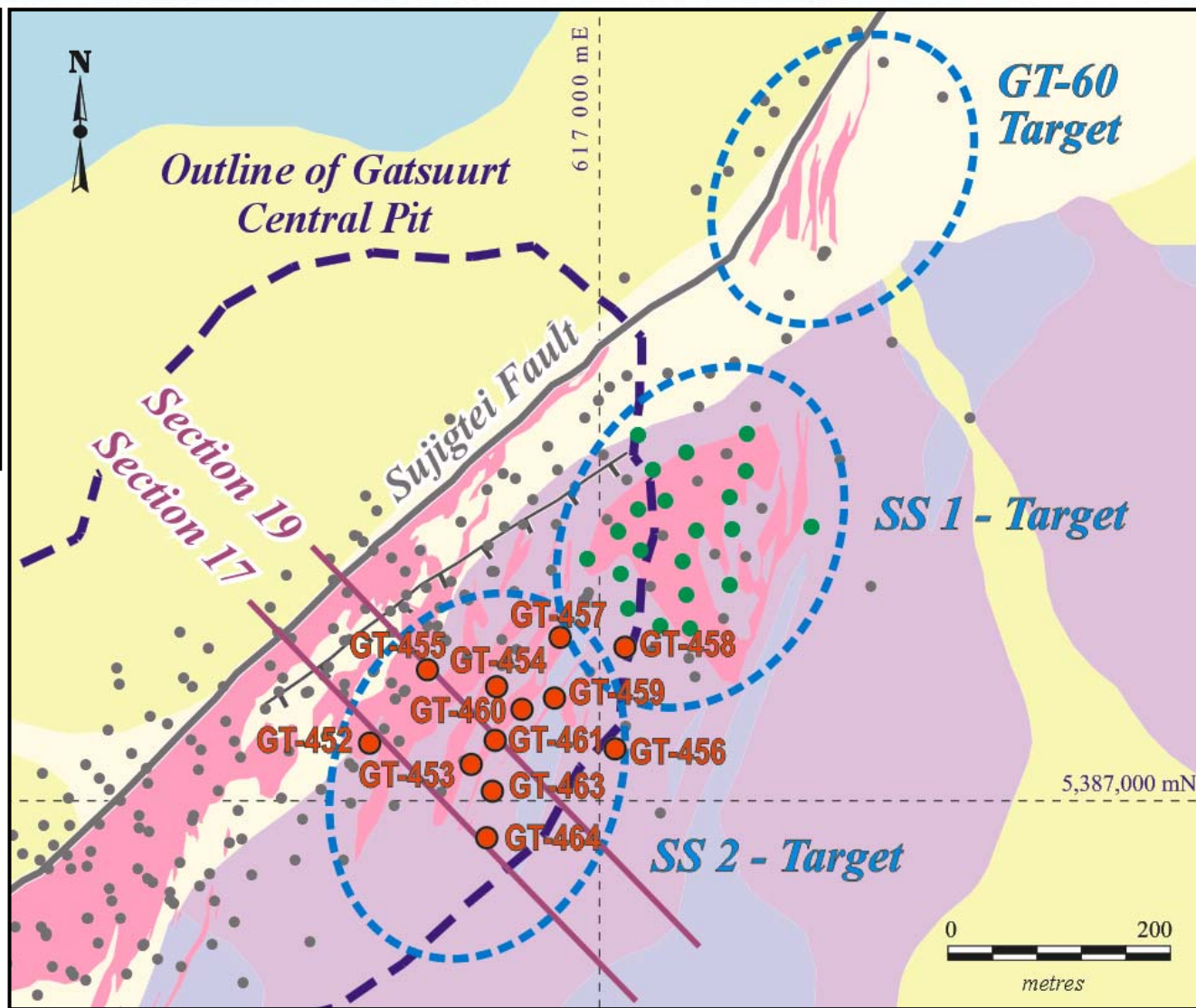
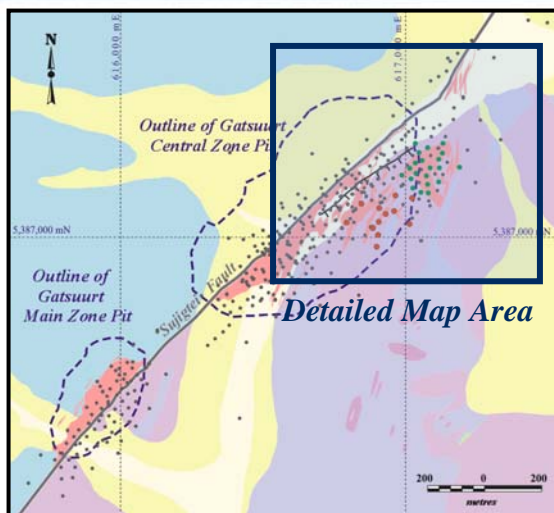
Muzdusuu Area					
Drill Hole	Drill Section	From (m)	To (m)	Core Length (m)	Au (g/t)
DM1408A	114	No significant intercepts			
DM1414	126	No significant intercepts			
DM1415	86	133.8	137.8	4.0	3.88
DM1417	86	No significant intercepts			

Southwest Deposit					
Drill Hole	Drill Section	From (m)	To (m)	Core Length (m)	Au (g/t)
SW-10-231	3265	393.0	397.7	4.7	3.07
		504.7	513.2	8.5	4.43
SW-10-232	3180	357.2	360.8	3.6	1.54
SW-10-233A	3215	365.6	372.0	6.4	2.10
SW-10-234	3255	391.0	403.5	12.5	1.64
SW-10-235	3280	409.7	411.9	2.2	2.90
		418.6	421.3	2.7	2.39
		437.1	453.9	16.8	1.54
		474.0	475.0	1.0	6.67

Notes: Significant mineralized intervals are greater than 1.00 g/t Au  
Individual assays are top cut to 60 g/t Au prior to composite calculation  
Lower cut-off for higher grade sub-intervals is 7.0 g/t Au  
True widths for mineralized zones are about 40% to 95% of stated down hole interval  
This information should be read together with our news release of July 30th, 2010. Ian Atkinson, a Certified Professional Geologist, is Centerra's qualified person for the purpose of National Instrument 43-101  
Tables are current as of June 30, 2010.

# Gatsuurt Central Pit – Q2 2010 South Slope Drillhole Plan Map

centerraGOLD

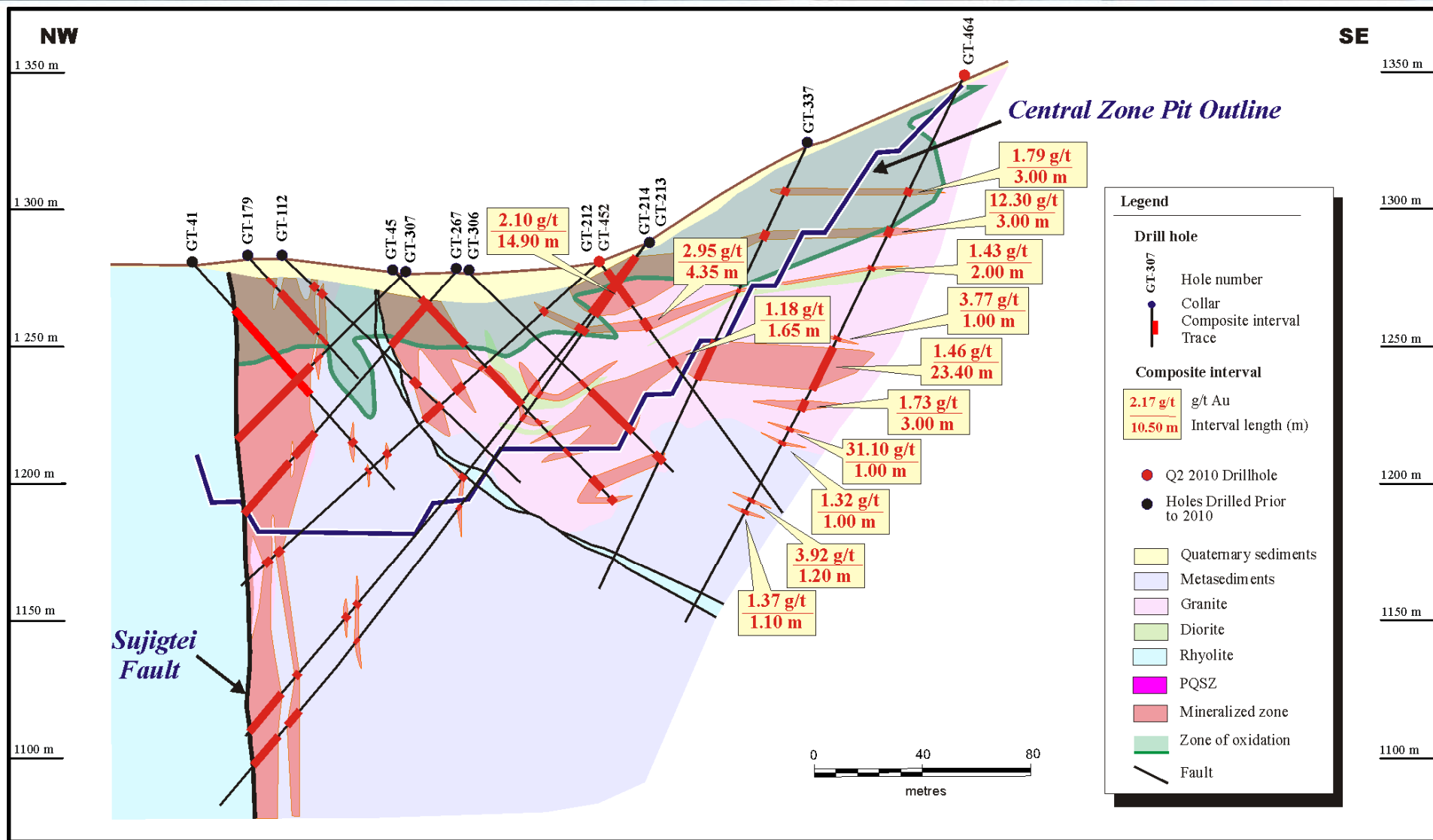


## LEGEND

- Q2 2010 Drillhole
- 2010 Drillhole
- Holes Drilled Prior to 2010
- Mineralized zone

# Gatsuurt Central Pit- Q2 2010

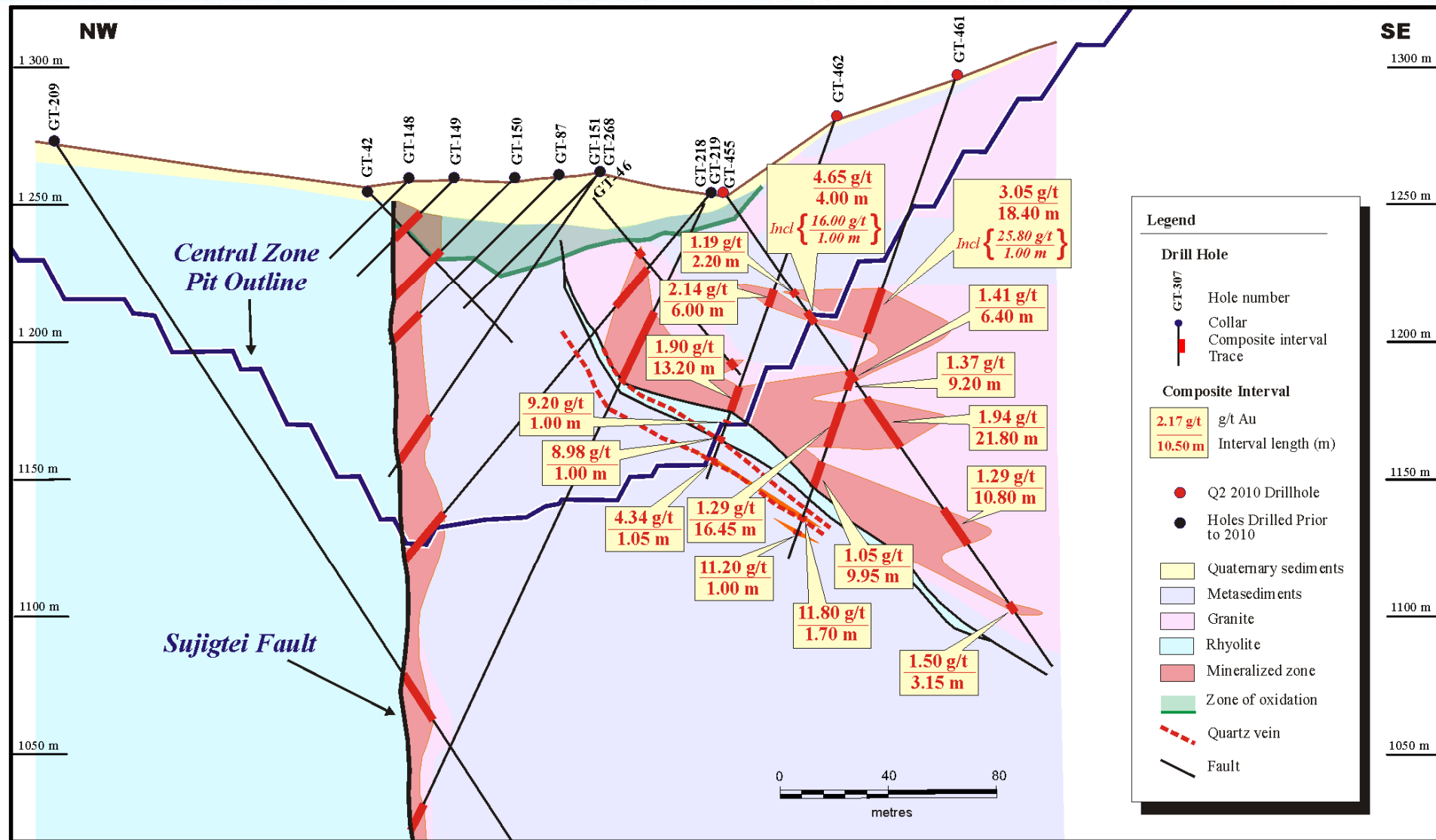
## South Slope Section 17





# Gatsuurt Central Pit – Q2 2010

## South Slope Section 19





# Centerra Gold Inc. - Gatsuurt 2010 Drilling Results

Period April 1st, 2010 to June 30th, 2010

Page 1 of 3

Drill Hole	Location	Drill Section	From (m)	To (m)	Core Length (m)	Au (g/t)
GT-452	SS2	17	6.80	21.70	14.90	2.10
			28.15	32.50	4.35	2.95
			46.00	47.65	1.65	1.18
GT-464	SS2	17	41.70	44.70	3.00	1.79
			58.20	61.20	3.00	12.30
			73.50	75.50	2.00	1.43
			96.60	97.60	1.00	3.77
			102.70	126.10	23.40	1.46
			130.10	133.10	3.00	1.73
			141.50	142.50	1.00	31.10
			147.00	148.00	1.00	1.32
			171.20	172.40	1.20	3.92
GT-453	SS2	18	175.70	176.80	1.10	1.37
			24.40	29.75	5.35	34.23
			<i>includes</i> 24.40	26.15	1.75	31.60
			<i>includes</i> 27.85	29.75	1.90	66.50
			35.45	37.35	1.90	1.85
			49.20	50.90	1.70	1.01
			56.10	58.20	2.10	13.80
			68.00	87.15	19.15	2.08
			92.25	100.30	8.05	3.35
			109.70	128.70	19.00	3.63
			<i>includes</i> 111.70	112.70	1.00	13.40
			<i>includes</i> 126.70	127.70	1.00	17.80
GT-463	SS2	18	173.45	176.50	3.05	2.17
			16.50	18.00	1.50	2.16
			54.00	60.30	6.30	1.28
			78.75	79.85	1.10	1.40
			101.50	102.50	1.00	1.08
			110.65	113.75	3.10	1.28
			119.60	128.15	8.55	2.74
			144.40	146.30	1.90	2.95

Notes: All assays reported are actual values with no top cutting factor applied

Significant mineralized intervals are greater than 0.80 g/t Au

True widths for mineralized zones are about 60% to 90% of stated down hole interval

This information should be read together with our news release of July 30th, 2010.

Ian Atkinson, a Certified Professional Geologist, is Centerra's qualified person for the purpose of National Instrument 43-101

Tables are current as of June 30, 2010.



# Centerra Gold Inc. - Gatsuurt 2010 Drilling Results

Period April 1st, 2010 to June 30th, 2010

Page 2 of 3

Drill Hole	Location	Drill Section	From (m)	To (m)	Core Length (m)	Au (g/t)
GT-454	SS2	19	4.90	6.80	1.90	1.30
			11.60	13.40	1.80	1.05
			31.00	34.20	3.20	1.54
			38.20	42.80	4.60	1.19
			46.80	51.10	4.30	1.40
			54.60	57.30	2.70	1.79
			59.75	62.25	2.50	1.21
			65.50	67.50	2.00	4.84
			includes 66.50	67.50	1.00	8.92
			100.30	102.30	2.00	1.68
GT-461	SS2	19	49.70	50.70	1.00	1.12
			54.10	55.30	1.20	4.88
			83.85	86.85	3.00	11.44
			includes 83.85	84.85	1.00	25.80
			includes 84.85	85.85	1.00	7.46
			88.85	100.85	12.00	1.63
			108.55	109.80	1.25	134.00
			116.25	117.40	1.15	4.24
			120.85	123.15	2.30	1.68
			128.75	136.35	7.60	1.94
			140.60	145.20	4.60	1.09
			149.35	151.85	2.50	1.93
			154.60	155.90	1.30	1.22
			172.95	174.65	1.70	11.80
			179.15	180.15	1.00	11.20
GT-462	SS2	19	45.65	49.30	3.65	1.38
			67.10	73.10	6.00	2.14
			98.40	102.40	4.00	3.43
			105.40	111.60	6.20	1.49
			119.20	122.05	2.85	9.20
			125.70	126.70	1.00	8.98
			133.90	134.95	1.05	4.34
GT-455	SS2	20	50.40	52.60	2.20	1.19
			57.40	61.40	4.00	4.65
			includes 58.40	59.40	1.00	16.00
			78.70	85.10	6.40	1.41
			93.80	115.60	21.80	1.94
			143.20	154.00	10.80	1.29
			186.45	189.60	3.15	1.50
GT-460	SS2	20	35.90	37.15	1.25	1.97
			40.90	42.00	1.10	1.52
			69.50	72.00	2.50	1.90
			77.20	78.40	1.20	1.00
			132.00	133.35	1.35	1.78
			188.30	189.45	1.15	5.71

Notes: All assays reported are actual values with no top cutting factor applied

Significant mineralized intervals are greater than 0.80 g/t Au

True widths for mineralized zones are about 60% to 90% of stated down hole interval

This information should be read together with our news release of July 30th, 2010.

Ian Atkinson, a Certified Professional Geologist, is Centerra's qualified person for the purpose of National Instrument 43-101

Tables are current as of June 30, 2010.





# Centerra Gold Inc. - Gatsuurt 2010 Drilling Results

Period April 1st, 2010 to June 30th, 2010

Page 3 of 3

Drill Hole	Location	Drill Section	From (m)	To (m)	Core Length (m)	Au (g/t)
GT-456	SS2	21	66.65	69.35	2.70	1.34
			95.50	114.85	19.35	1.72
			128.70	134.50	5.80	1.47
			161.80	164.30	2.50	2.39
GT-459	SS2	21	16.10	19.10	3.00	1.80
			41.40	42.60	1.20	1.14
			46.30	47.60	1.30	1.22
			56.30	57.30	1.00	1.52
			61.30	66.30	5.00	2.23
			70.30	72.30	2.00	1.49
			74.30	76.30	2.00	1.34
			96.70	99.10	2.40	1.31
			123.80	125.80	2.00	1.44
GT-457	SS2	22	60.70	63.90	3.20	1.63
			71.75	76.15	4.40	0.99
			79.40	82.40	3.00	1.46
			89.40	97.70	8.00	2.08
			115.40	117.40	2.00	2.34
GT-458	SS2	23	19.80	21.30	1.50	1.46
			91.10	105.10	14.00	1.62

Notes: All assays reported are actual values with no top cutting factor applied  
Significant mineralized intervals are greater than 0.80 g/t Au  
True widths for mineralized zones are about 60% to 90% of stated down hole interval  
This information should be read together with our news release of July 30th, 2010.  
Ian Atkinson, a Certified Professional Geologist, is Centerra's qualified person for the purpose of  
National Instrument 43-101  
Tables are current as of June 30, 2010.