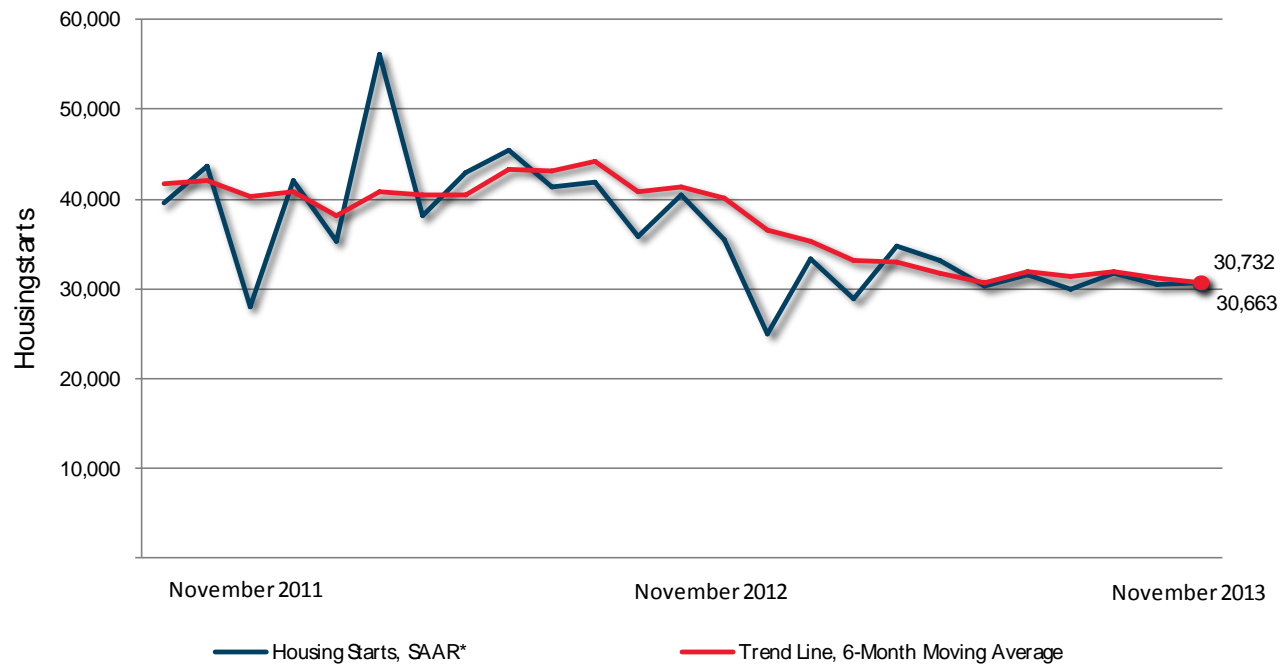


## Housing starts in Quebec urban centres



\*SAAR: Seasonally Adjusted Annual Rate

Preliminary Housing Start Data November 2013		
Quebec	October 2013	November 2013
Trend <sup>1</sup> , urban centres <sup>2</sup>	31,152	30,732
SAAR, urban centres <sup>2</sup>	30,424	30,663
	November 2012	November 2013
Actual, urban centres <sup>2</sup>		
November - Single-detached	912	634
November - Multiples	3,184	2,449
November - Total	4,096	3,083
January to November - Single-detached	9,918	7,566
January to November - Multiples	27,467	20,728
January to November - Total	37,385	28,294

Source: CMHC

<sup>1</sup>The trend is a six-month moving average of the monthly seasonally adjusted annual rates (SAAR).

<sup>2</sup>Urban centres with a population of 10,000 and over.

Detailed data available upon request

Quebec Preliminary Actual Housing Starts Data							
November / 2012 - 2013							
Urban Centres		Singles		Multiples		Total	
		2012	2013	2012	2013	2012	2013
Urban Centres 100,000+	Montréal CMA/RMR	335	271	1,733	1,247	2,068	1,518
	Ottawa-Gatineau CMA/RMR (QC)	37	49	149	318	186	367
	Québec CMA/RMR	132	79	538	353	670	432
	Saguenay CMA/RMR	28	43	88	32	116	75
	Sherbrooke CMA/RMR	47	22	138	69	185	91
	Trois-Rivières CMA/RMR	24	25	116	21	140	46
Urban Centres 50,000-99,999	Drummondville CA/AR	39	24	32	40	71	64
	Granby CA/AR	15	13	33	29	48	42
	Rimouski CA/AR	n/a	4	n/a	28	n/a	32
	Saint-Hyacinthe CA/AR	4	2	32	3	36	5
	Saint-Jean-sur-Richelieu V CA/AR	31	17	50	14	81	31
	Shawinigan CA/AR	14	10	49	129	63	139
Urban Centres 10,000+	Total Urban Starts	912	634	3,184	2,449	4,096	3,083

Urban starts include an estimate for the areas 10,000-49,999 for the first two months of the quarter and are subject to revision(s) after quarterly enumeration in the third and final month of the quarter.

Quebec Preliminary Actual Housing Starts Data							
Year-to-Date / 2012 - 2013							
Urban Centres		Singles		Multiples		Total	
		2012	2013	2012	2013	2012	2013
Urban Centres 100,000+	Montréal CMA/RMR	3,666	2,832	15,427	11,157	19,093	13,989
	Ottawa-Gatineau CMA/RMR (QC)	647	456	1,962	1,337	2,609	1,793
	Québec CMA/RMR	1,162	894	4,680	3,437	5,842	4,331
	Saguenay CMA/RMR	385	317	654	559	1,039	876
	Sherbrooke CMA/RMR	580	418	968	746	1,548	1,164
	Trois-Rivières CMA/RMR	281	227	654	560	935	787
Urban Centres 50,000-99,999	Drummondville CA/AR	400	264	180	166	580	430
	Granby CA/AR	232	178	412	337	644	515
	Rimouski CA/AR	n/a	98	n/a	209	n/a	307
	Saint-Hyacinthe CA/AR	86	43	242	158	328	201
	Saint-Jean-sur-Richelieu V CA/AR	201	155	231	165	432	320
	Shawinigan CA/AR	99	101	149	167	248	268
Urban Centres 10,000+	Total Urban Starts	9,918	7,566	27,467	20,728	37,385	28,294

Urban starts include an estimate for the areas 10,000-49,999 for the first two months of the quarter and are subject to revision(s) after quarterly enumeration in the third and final month of the quarter.