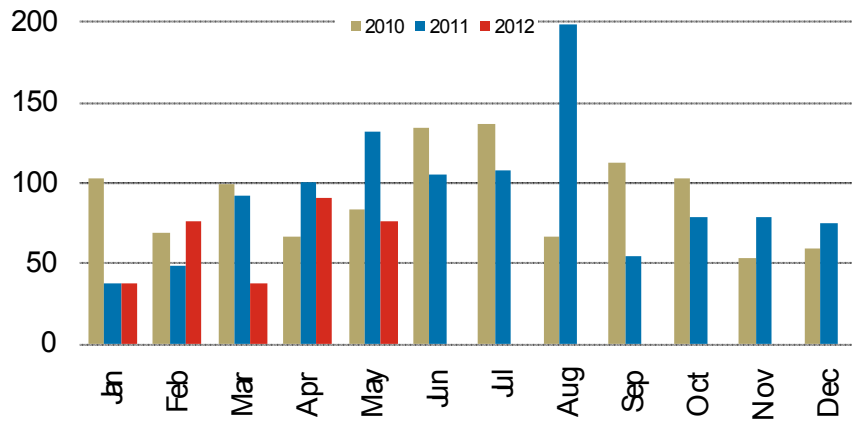


Monthly Housing Starts



Source: CMHC

TABLE 1: MAY

Municipality	Single-Detached			Semi-Detached			Row			Apartment			Total		
	2011	2012	%	2011	2012	%	2011	2012	%	2011	2012	%	2011	2012	%
Fort Erie	6	5	-17 %	0	0	*	0	0	*	0	0	*	6	5	-17 %
Port Colborne	0	2	*	0	0	*	0	0	*	0	0	*	0	2	*
Wainfleet	0	3	*	0	0	*	0	0	*	0	0	*	0	3	*
Pelham	7	2	-71 %	0	0	*	0	0	*	0	0	*	7	2	-71 %
Welland	9	6	-33 %	2	2	*	0	0	*	0	0	*	11	8	-27 %
Thorold	4	6	50 %	0	2	*	0	0	*	0	0	*	4	8	100 %
Niagara Falls	28	8	-71 %	2	0	-100 %	7	8	14 %	0	0	*	37	16	-57 %
Niagara-on-the-Lake	8	10	25 %	0	0	*	0	3	*	0	0	*	8	13	63 %
St. Catharines	5	6	20 %	0	0	*	6	7	17 %	40	0	-100 %	51	13	-75 %
Lincoln	5	4	-20 %	0	2	*	3	0	-100 %	0	0	*	8	6	-25 %
St. Catharines-Niagara CMA	72	52	-28 %	4	6	50 %	16	18	13 %	40	0	-100 %	132	76	-42 %
Grimsby	13	6	-54 %	0	0	*	0	0	*	0	0	*	13	6	-54 %
West Lincoln ¹	*	*	*	*	*	*	*	*	*	*	*	*	*	*	*
Niagara Region²	85	58	-32 %	4	6	50 %	16	18	13 %	40	0	-100 %	145	82	-43 %

TABLE 2: YEAR-TO-DATE (JANUARY-MAY)

Municipality	Single-Detached			Semi-Detached			Row			Apartment			Total		
	2011	2012	%	2011	2012	%	2011	2012	%	2011	2012	%	2011	2012	%
Fort Erie	31	20	-35 %	0	0	*	3	0	-100 %	0	0	*	34	20	-41 %
Port Colborne	0	2	*	0	0	*	0	0	*	0	0	*	0	2	*
Wainfleet	7	1	-86 %	0	0	*	0	0	*	0	0	*	7	1	-86 %
Pelham	14	8	-43 %	2	0	-100 %	0	4	*	0	0	*	16	12	-25 %
Welland	31	17	-45 %	2	0	-100 %	3	6	100 %	25	0	-100 %	61	23	-62 %
Thorold	26	6	-77 %	0	2	*	7	11	57 %	0	0	*	33	19	-42 %
Niagara Falls	64	51	-20 %	4	0	-100 %	13	21	62 %	0	0	*	81	72	-11 %
Niagara-on-the-Lake	23	28	22 %	2	2	*	20	13	-35 %	0	0	*	45	43	-4 %
St. Catharines	21	14	-33 %	2	0	-100 %	14	13	-7 %	42	0	-100 %	79	27	-66 %
Lincoln	26	18	-31 %	4	0	-100 %	24	6	-75 %	0	0	*	54	24	-56 %
St. Catharines-Niagara CMA	243	165	-32 %	16	4	-75 %	84	74	-12 %	67	0	-100 %	410	243	-41 %
Grimsby	43	8	-81 %	0	0	*	0	62	*	0	0	*	43	70	63 %
West Lincoln ¹	*	*	*	*	*	*	*	*	*	*	*	*	*	*	*
Niagara Region²	286	173	-40 %	16	4	-75 %	84	136	62 %	67	0	-100 %	453	313	-31 %

Source: CMHC

*Not applicable

**Year-over-year change greater than 1000 per cent

¹Housing starts data for West Lincoln are collected and reported only on a quarterly basis (i.e. in March, June, September, December)

²Housing starts data for Niagara Region are accurate at each end-of-quarter month and understated in other months due to reporting conventions used for West Lincoln as described in the note (1) above