

Figure 1: Plan view of Yaragua underground sampling, showing drift and cross-cuts samples colour-coded for gold grades, data from raise sampling and also significant drill intercepts on the Murcielagos vein family.

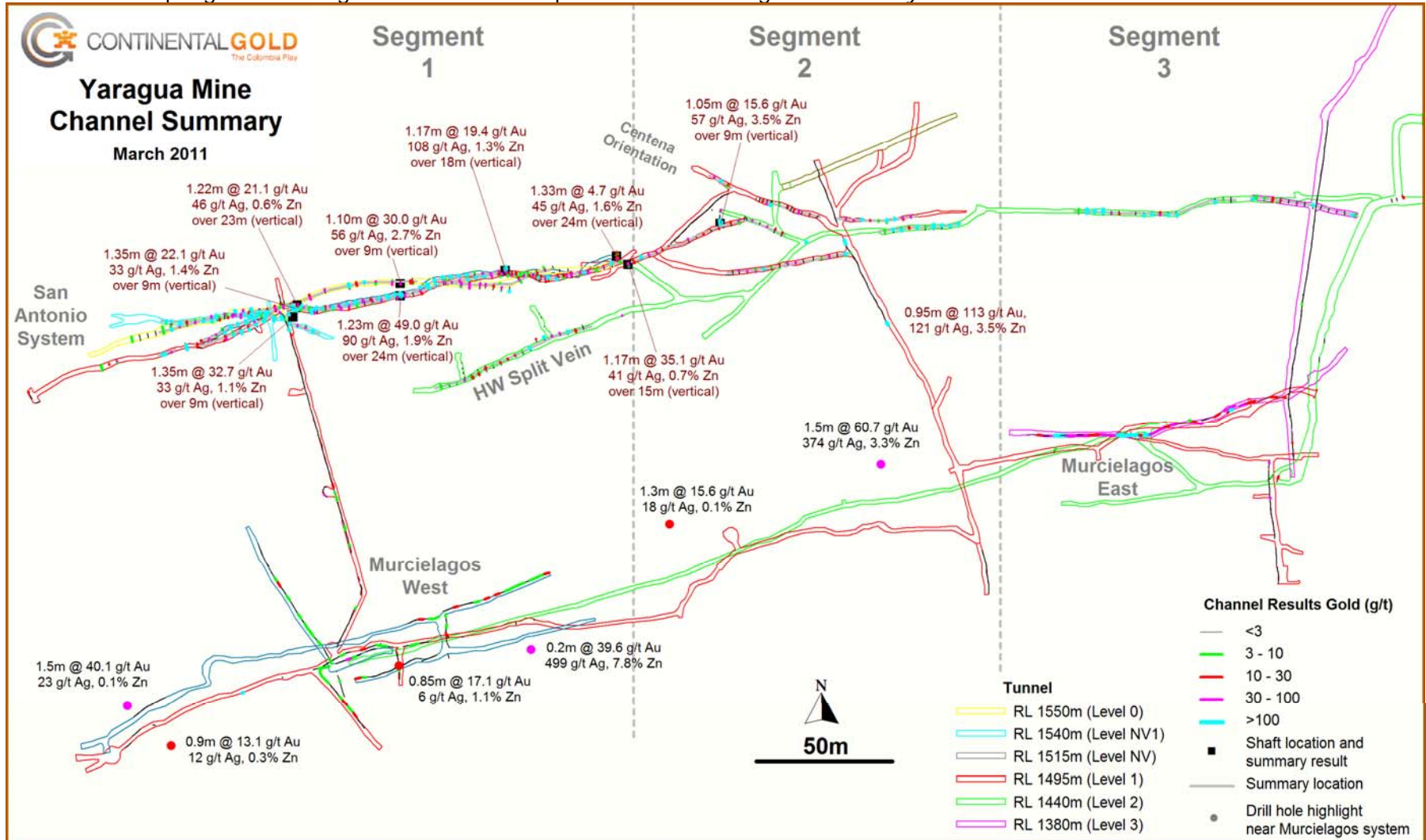


Figure 2: Longitudinal section showing the locations of underground sampling on the Yaragua vein system and some significant drill intercepts on the San Antonio vein set

