

467000

468000



### 2014 Phase I Exploration Results Figure 2 - Soil Sample Results

Projection - NAD 1983 UTM Zone 09N Date - 04/09/2014  
Drawn By - CSG

**Legend**

**Soils - 2014 - Sed Contact - Au\_ppb**

**Au\_ppb**

- 0.5 - 10.0
- 10.1 - 28.0
- 28.1 - 59.0
- 59.1 - 10000.0

**Rocks - 2014 - All - Au\_ppb**

**Au\_ppb**

- ▲ 0.1 - 2.5
- ▲ 2.6 - 5.0
- ▲ 5.1 - 8.0
- ▲ 8.1 - 1000000.0

— Rivers\_TRIM  
— LakesPoly\_TRIM

**Soils - 2014 - Ag (ppm)**

**Value**

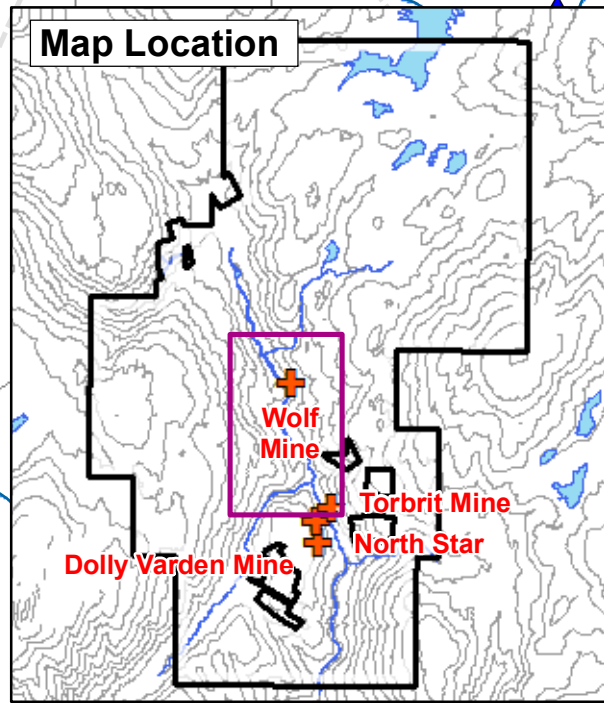
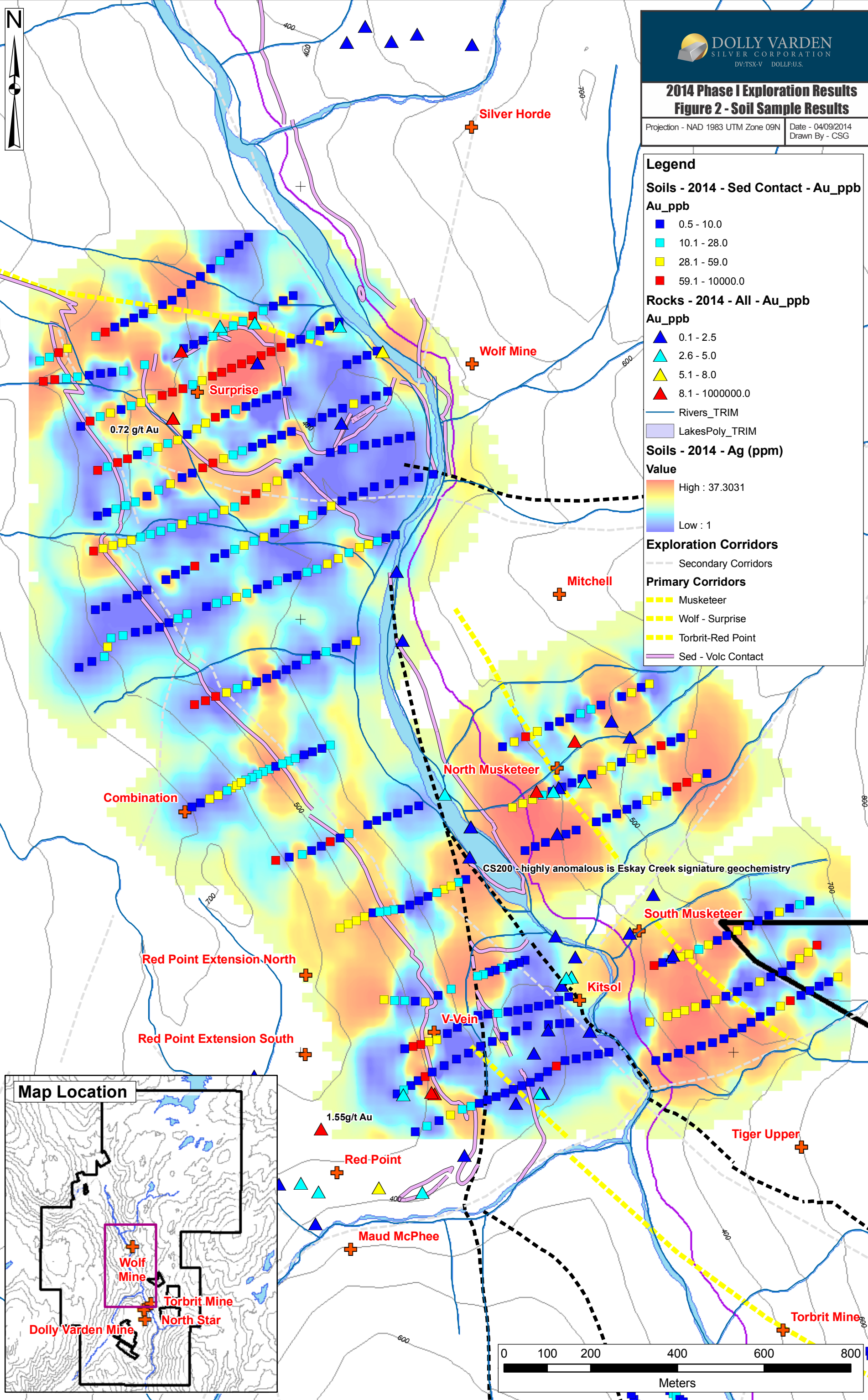
High : 37.3031  
Low : 1

**Exploration Corridors**

--- Secondary Corridors

**Primary Corridors**

- Musketeer
- Wolf - Surprise
- Torbrit-Red Point
- Sed - Volc Contact



6174000

6173000

6172000

6174000

6173000

6172000

467000

468000