

Figure 1: Location map of Las Morras Property.

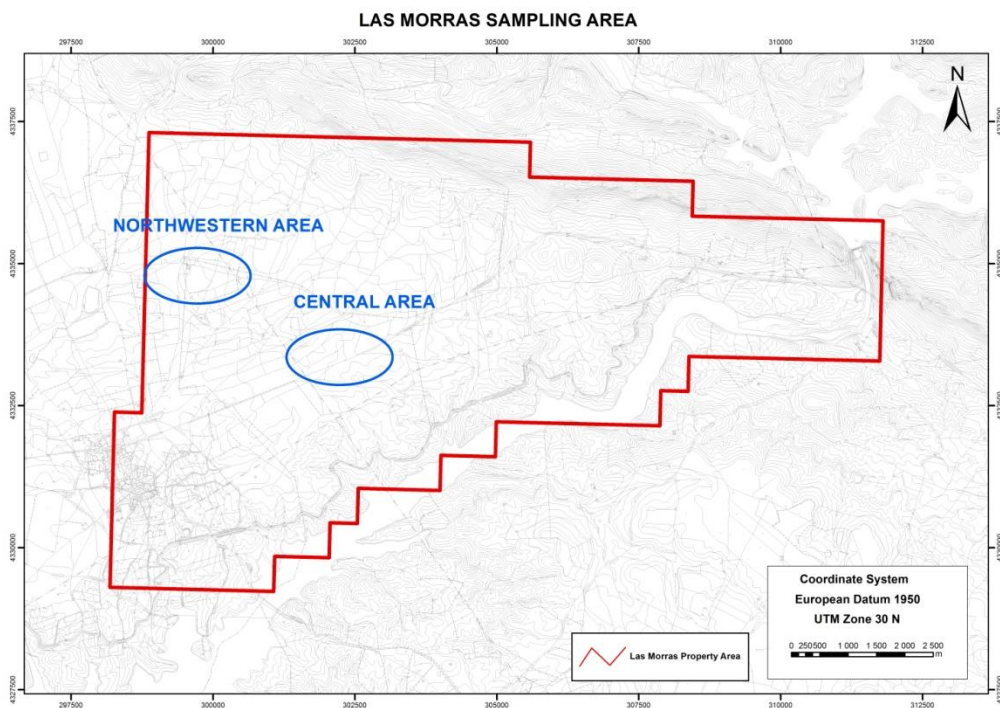


Figure 2: Sampling Areas of the Las Morras Property.

65 Queen Street West, Suite 800, Toronto, ON, Canada, M5H 2M5

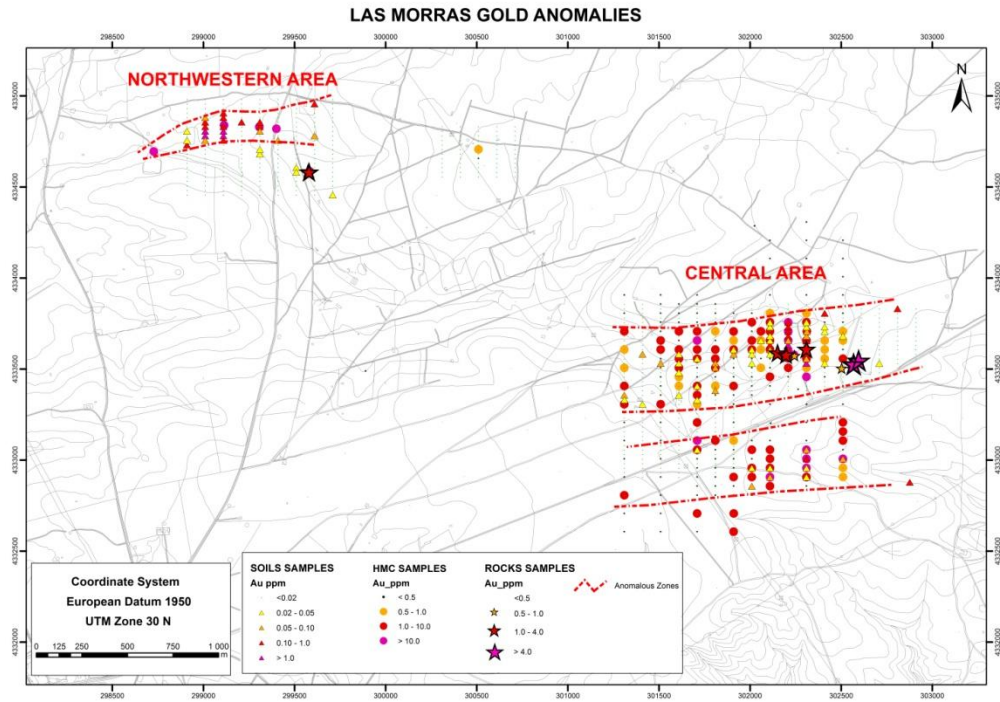


Figure 3: Interpretation of the Gold anomalies of the Central and Northwestern area.

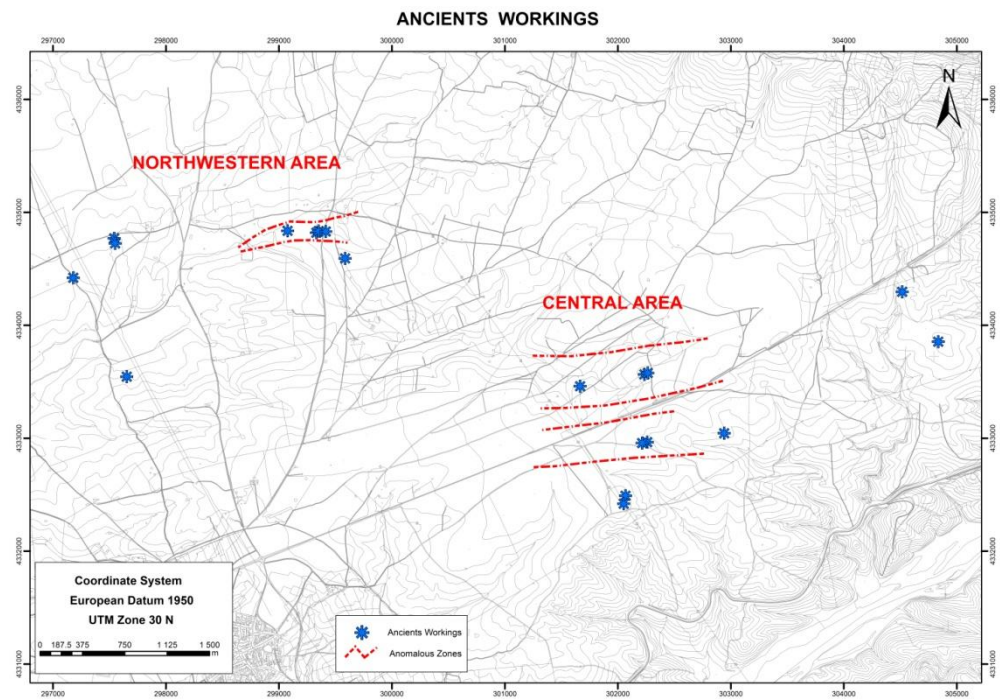


Figure 4: Location of the historical workings identified during mapping and anomalous zones in Las Morras.

65 Queen Street West, Suite 800, Toronto, ON, Canada, M5H 2M5

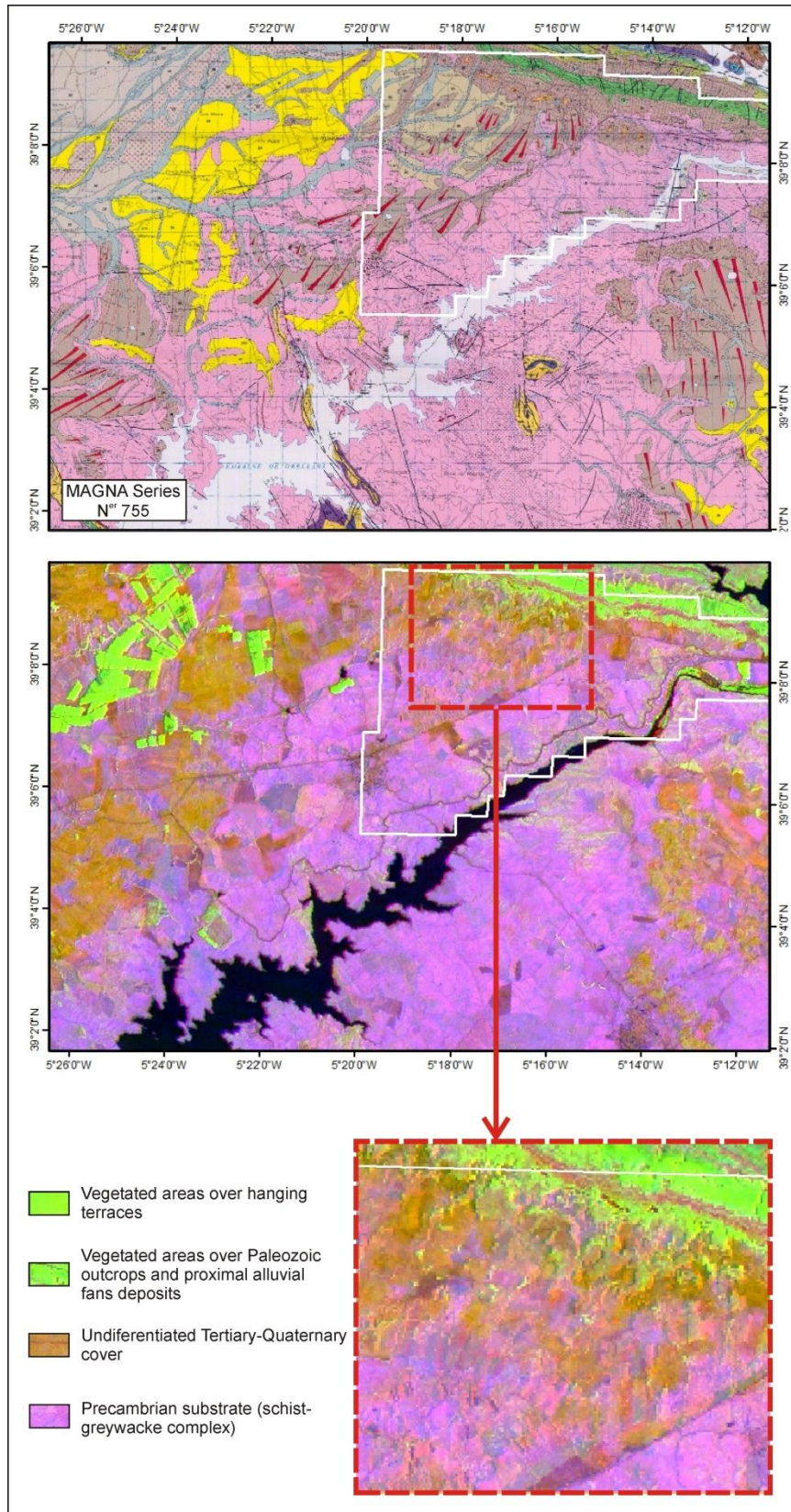


Figure 5. RGB composition of the Aster band ratios 4/1, 3/1, and 12/14 compared with the regional geological map of the MAGNA Series, and detail of the spectral response of the Paleozoic outcrops (green), the attached alluvial fans (also green), and the Quaternary cover (orange).

65 Queen Street West, Suite 800, Toronto, ON, Canada, M5H 2M5

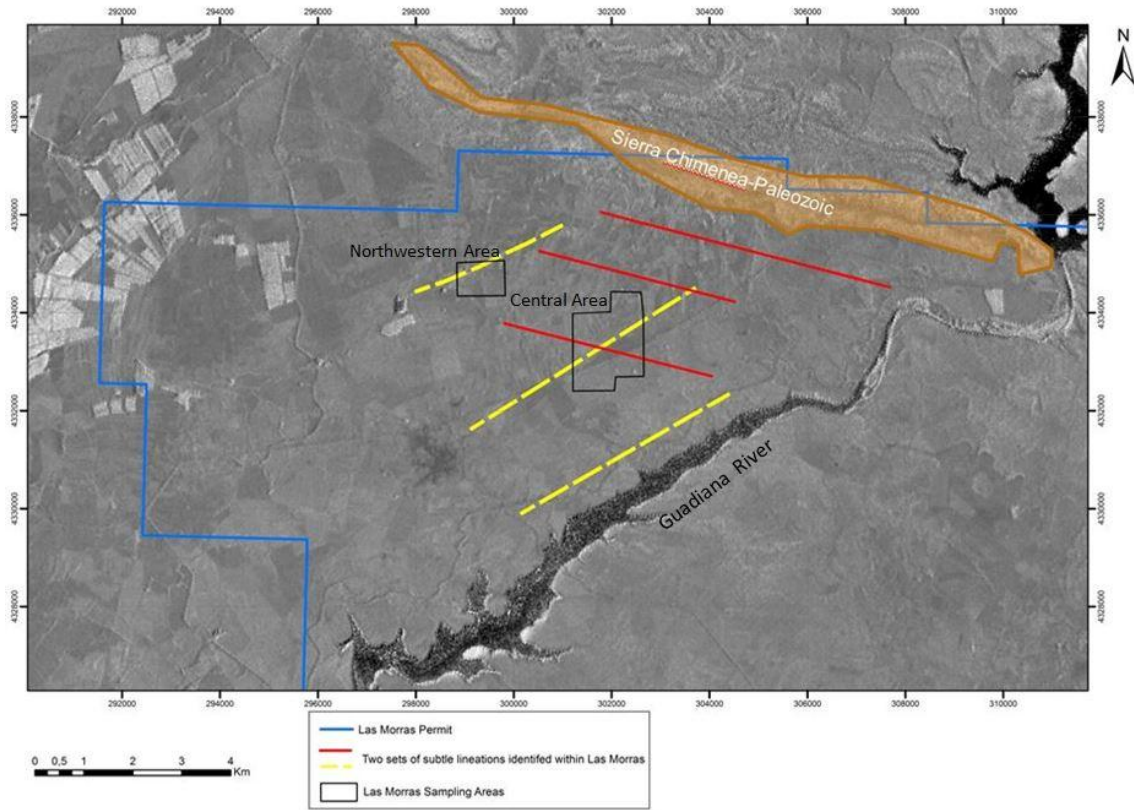


Figure 6. Rationing analysis (4+7)/6 of the Aster image including the two sets of subtle lineations identified within the Las Morras Property.

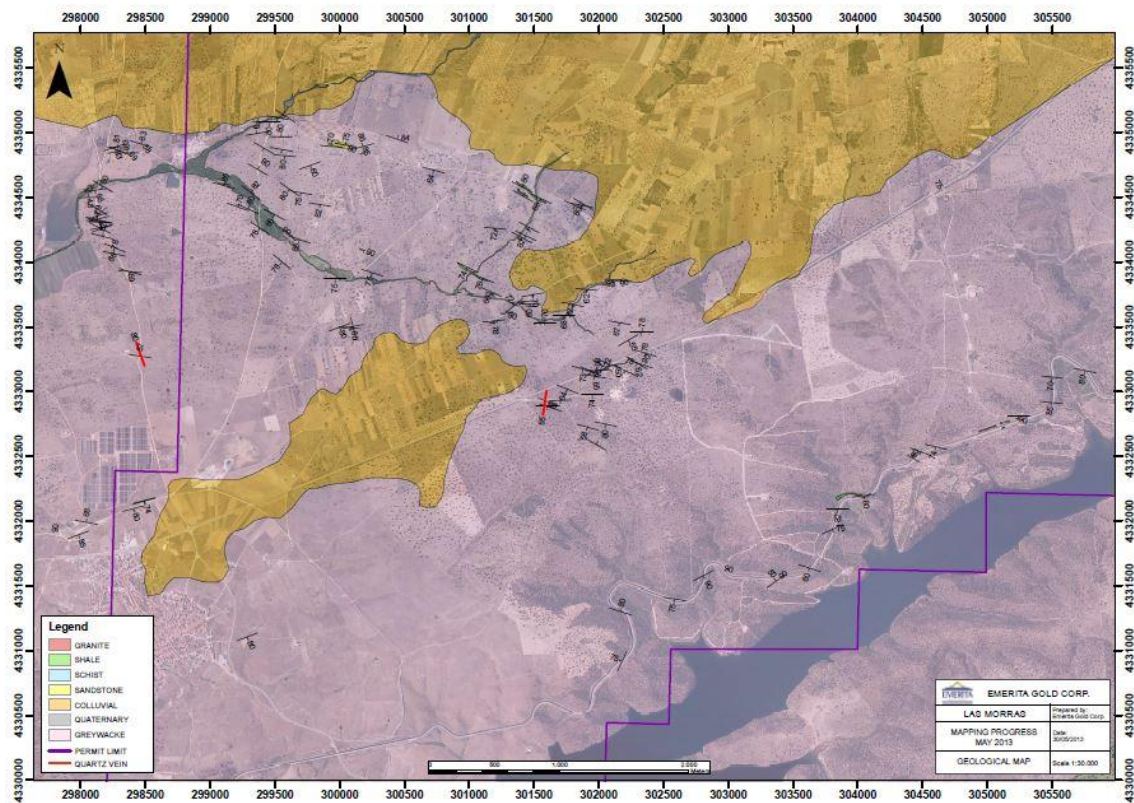


Figure 7. Detailed geological mapping in the Las Morras exploration permit

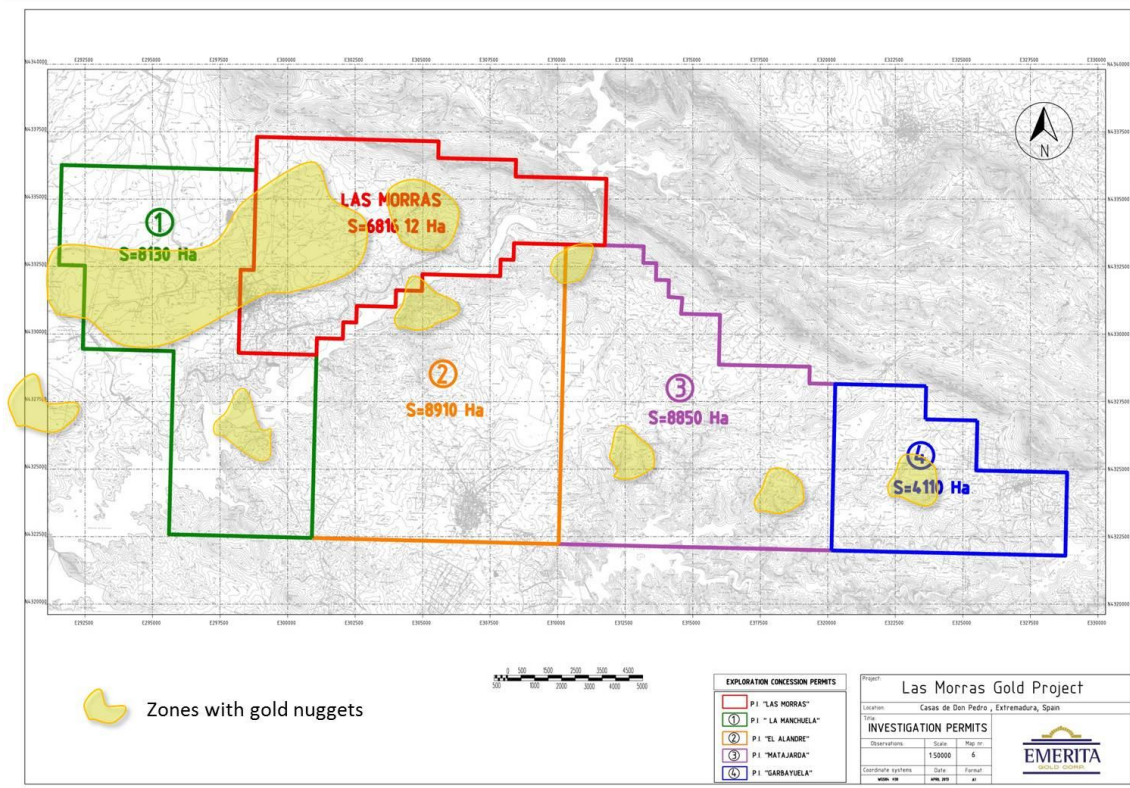


Figure 8: four new exploration claims surrounding the Las Morras Exploration claim showing areas where gold nuggets have been identified by local prospectors.

Sample #	UTM Easting	UTM Northing	Au ppm
S-13-204	299109.73	4334756.28	0.178
S-13-205	299109.73	4334781.28	1.785
S-13-206	299109.73	4334806.28	1.785
S-13-207	299109.73	4334831.26	0.663
S-13-208	299109.73	4334856.28	1.215
S-13-209	299109.73	4334881.28	0.341
S-13-210	299109.73	4334906.28	0.407
S-13-219	299209.73	4334856.28	0.246
S-13-231	299309.73	4334831.28	0.544
S-13-232	299309.73	4334856.28	0.250
S-13-265	299009.73	4334781.28	1.190
S-13-266	299009.73	4334806.28	1.255
S-13-267	299009.73	4334831.28	0.902
S-13-268	299009.73	4334856.28	0.796
S-13-285	298909.72	4334731.28	0.179

Table 1: Anomalous Soil samples gold analyses from the Northwestern area of Las Morras Property.



65 Queen Street West, Suite 800, Toronto, ON, Canada, M5H 2M5

Sample #	UTM Easting	UTM Northing	Au ppm
HMC-13-142	299400.73	4334819.29	142.500
HMC-13-143	299113.73	4334838.28	385.000
HMC-13-145	299306.73	4334829.28	130.500
HMC-13-146	299582.73	4334586.29	342.000
HMC-13-147	298727.72	4334694.27	98.500
HMC-13-148	300509.73	4334706.31	0.500
HMC-13-149	300509.73	4334656.31	0.330
HMC-13-150	299889.73	4333488.29	0.270
HMC-13-151	302024.74	4334285.34	0.100

Table 2: HMC samples gold analyses from the Northwestern area of Las Morras Property.

Sample #	UTM Easting	UTM Northing	Au ppm
865853	299742.73	4334730.29	0.237
865854	299571.73	4334589.29	0.754
865855	299579.73	4334582.29	1.375
865856	299577.73	4334583.29	1.455
865857	299419.73	4334832.29	0.047
865858	299418.73	4334823.29	0.097
865860	299335.73	4334830.29	0.300
865861	299320.73	4334819.28	0.300

Table 3: Rock sample gold assays from boulders in the Northwestern area of Las Morras Property.