

Figure 1. Yandera area prospects and deposits. The blue lines show the centreline of the sections below.

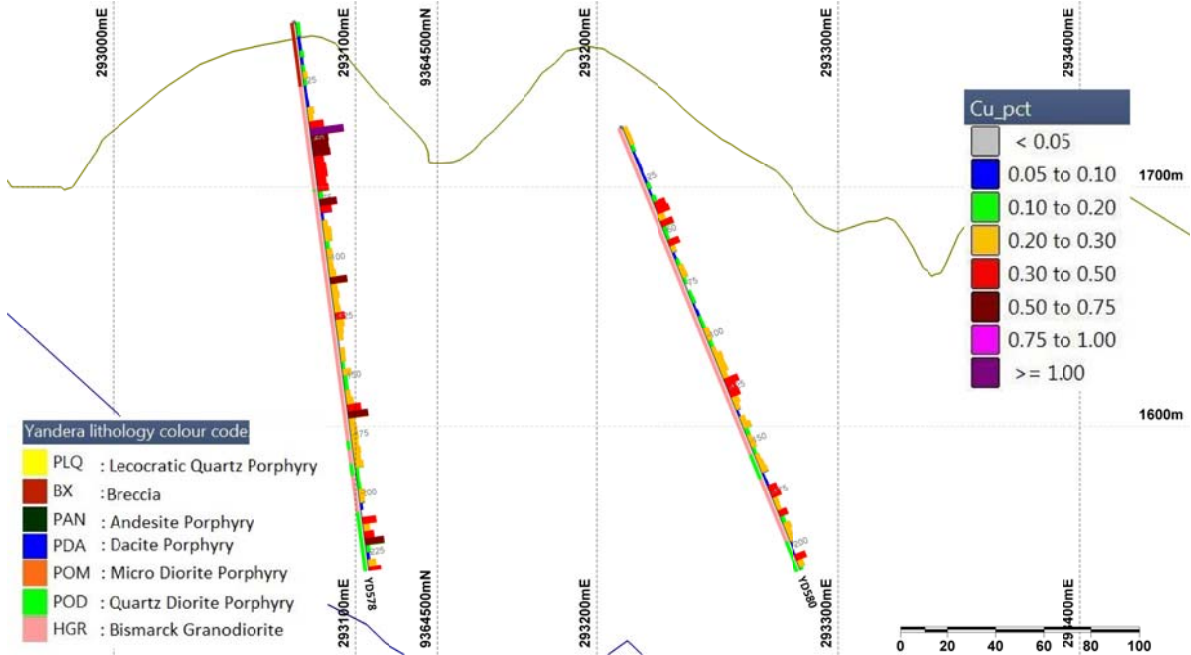
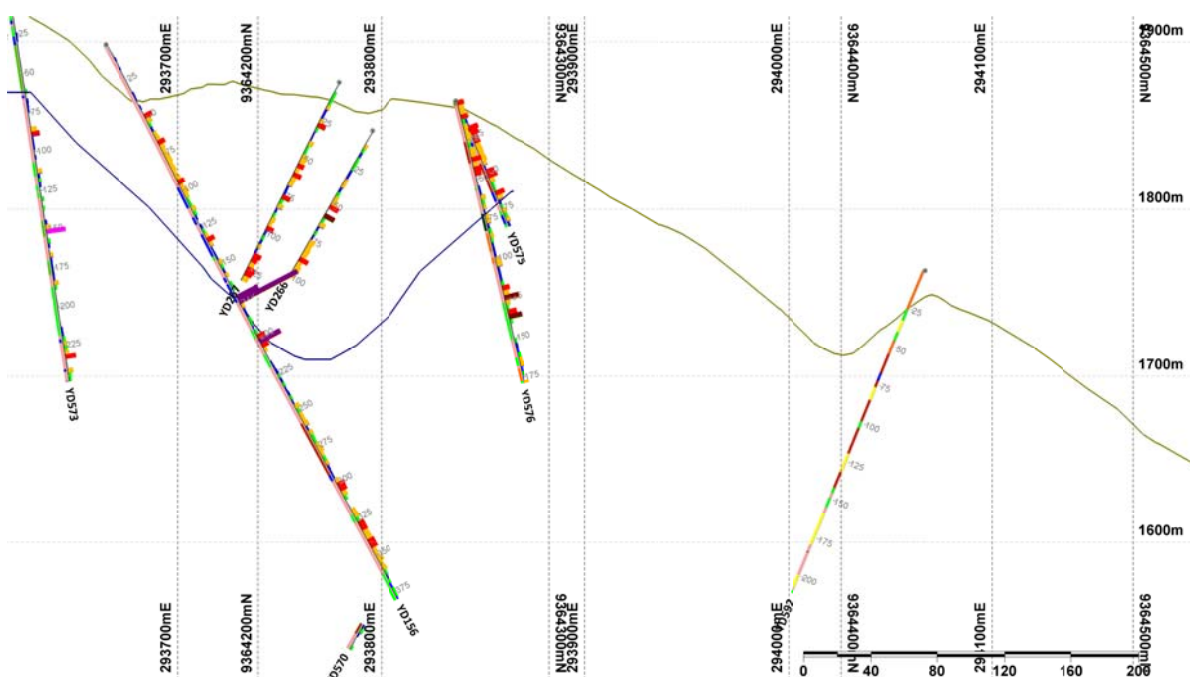


Figure 2. Section A-A'. This section is oriented west-southwest to east-northeast and the look direction is to the north-northwest. The section width is 125 metres. The brown line is the topography and the blue line is the bottom of the modeled open pit for the 2015 resource. The right side of each drill trace shows copper values and the left side of each trace shows lithology. The legend in Section A-A' applies to all other sections.



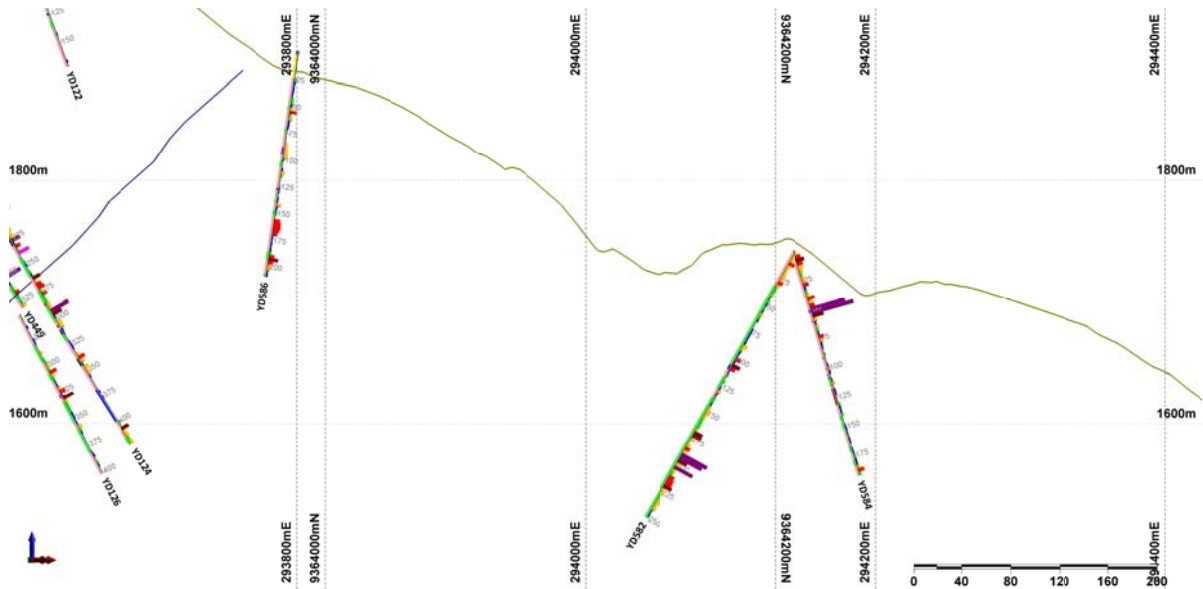


Figure 4. Section C-C'. This section is oriented southwest to northeast and the look direction is to the northwest. The brown line is the topography and the blue line is the bottom of the modeled open pit for the 2015 resource.

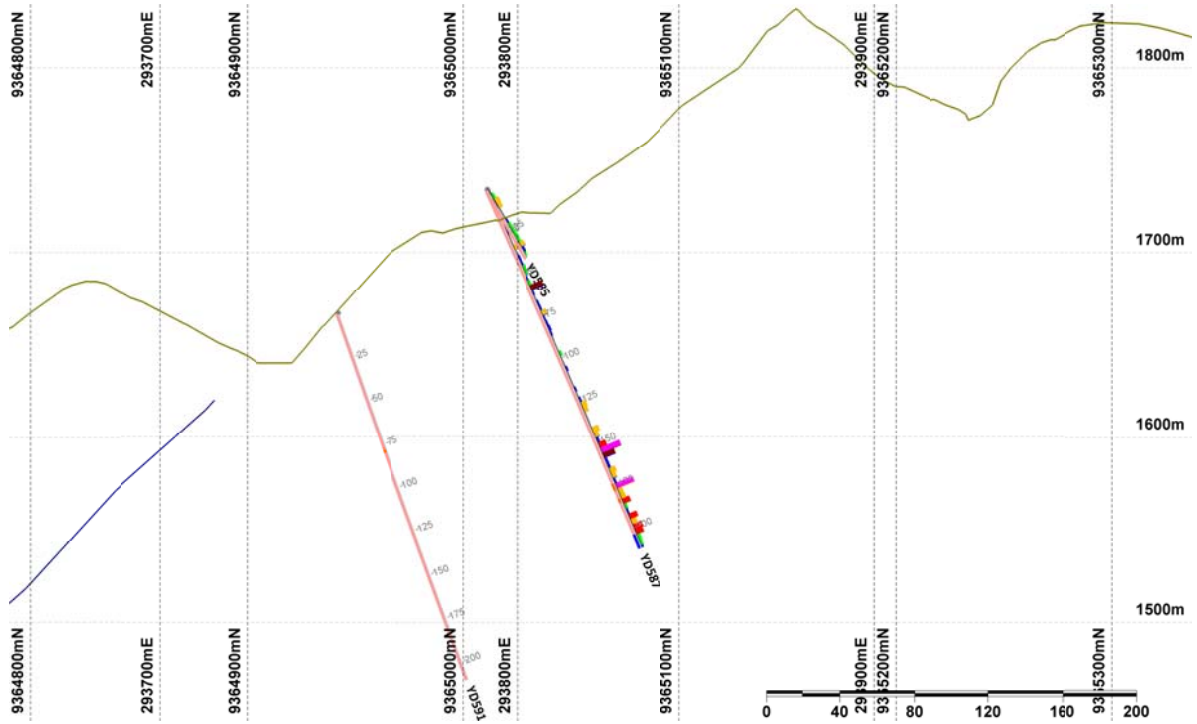


Figure 5. Section D-D'. This section is oriented southwest to northeast and the look direction is to the northwest. The brown line is the topography and the blue line is the bottom of the modeled open pit for the 2015 resource.

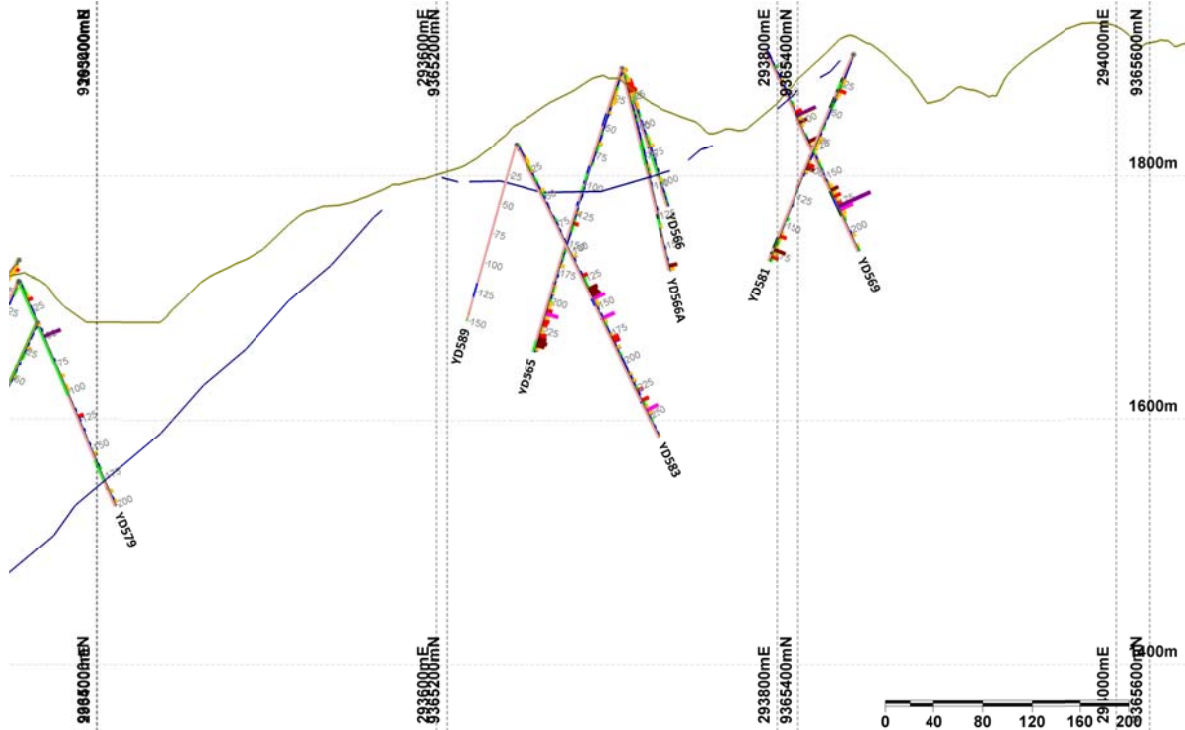


Figure 6. Section E-E'. This section is oriented southwest to northeast and the look direction is to the northwest. The brown line is the topography and the blue line is the bottom of the modeled open pit for the 2015 resource.

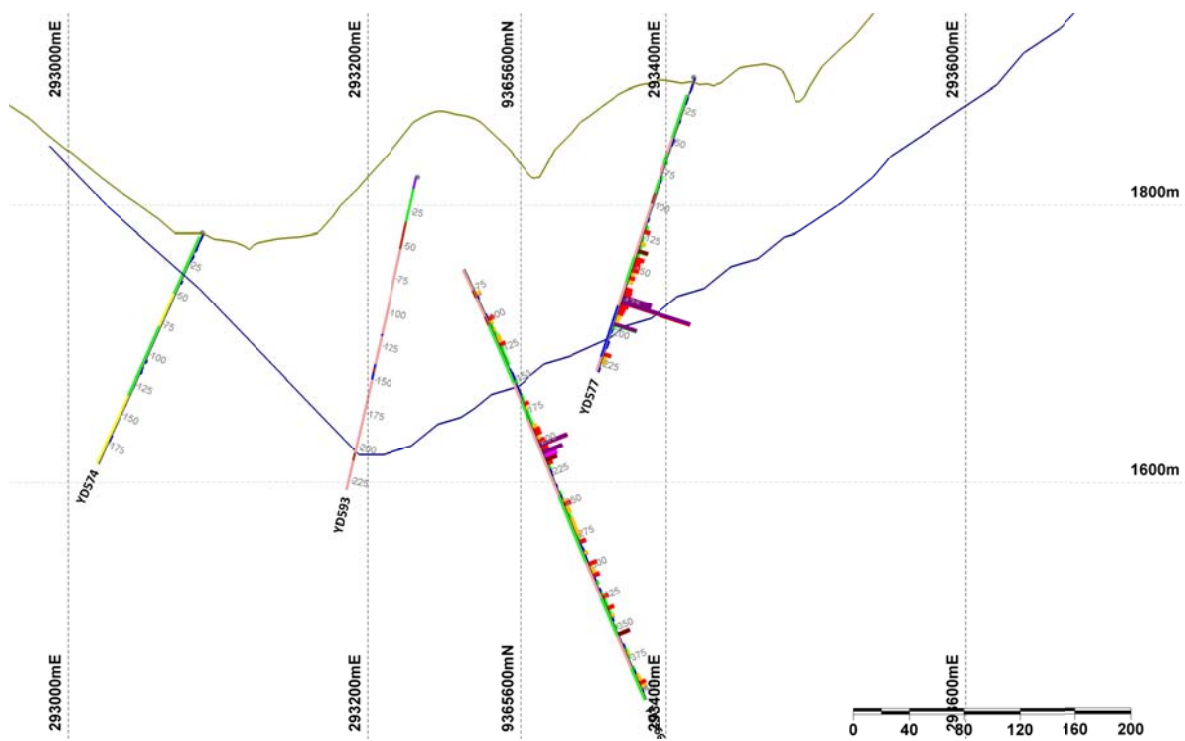


Figure 7. Section F-F'. This section is oriented southwest to northeast with the look direction to the northwest. The brown line is the topography and the blue line is the bottom of the modeled open pit for the 2015 resource.