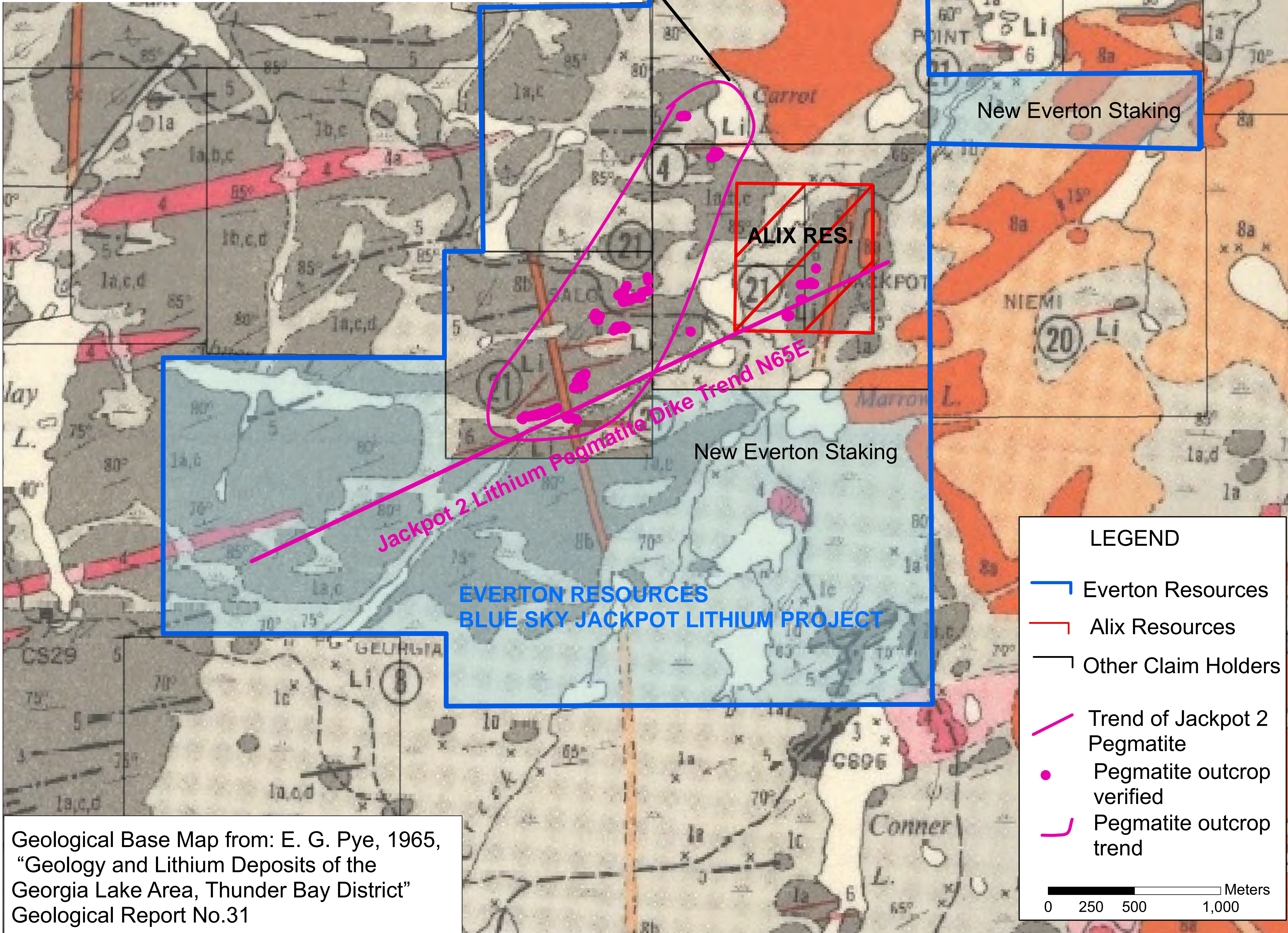


# EVERTON RESOURCES BLUE SKY JACKPOT LITHIUM PROJECT

August 10, 2016



Spodumene bearing pegmatite trend.  
Follow up programs to establish grade and continuity



Geological Base Map from: E. G. Pye, 1965,  
"Geology and Lithium Deposits of the  
Georgia Lake Area, Thunder Bay District"  
Geological Report No.31

**LEGEND**

- ▭ Everton Resources
- ▭ Alix Resources
- ▭ Other Claim Holders
- Trend of Jackpot 2 Pegmatite
- Pegmatite outcrop verified
- ┌ Pegmatite outcrop trend

0 250 500 1,000 Meters