

Figure 1: Plan view of the Tulare Copper-Gold Porphyry Project showing the location of all currently defined exploration target areas together with combined gold-copper soil geochemical anomalies. Note that the grid spacing is 1,000 meters.

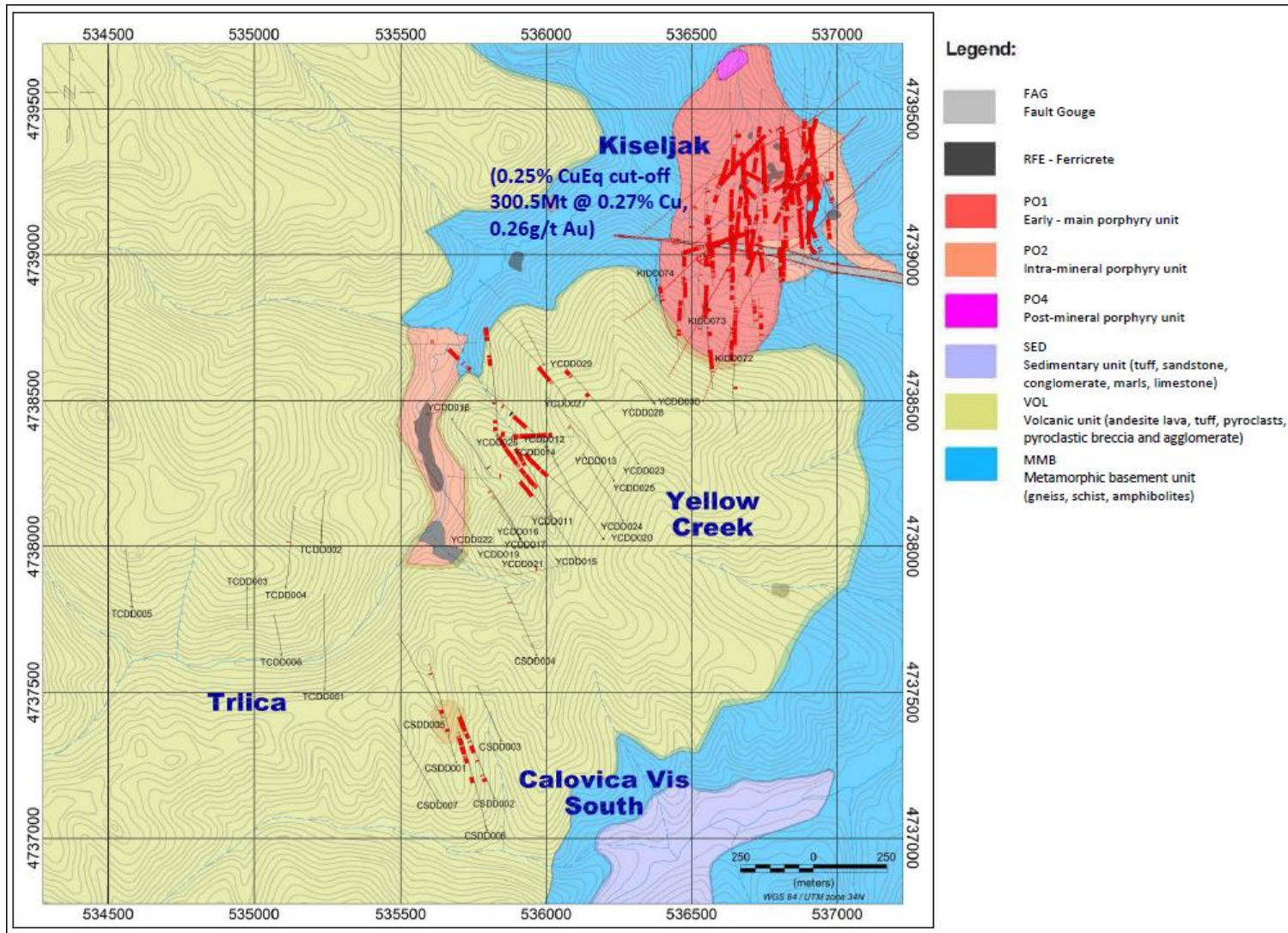


Figure 2: Plan view of the Kiseljak deposit, Yellow Creek, Calovica vis South and Trlica target areas showing Dunav drilling to date. Note: significant drill intersections are shown in red at a 0.20% CuEq cut off (\$1,500/oz Au & \$3.50/lb. Cu); the grid spacing is 500 meters.