

Media Luna –Resource Area And Magnetic Anomalies



Figure 1

Todos Santos
Area: 107 Ha

Media Luna
Area: 300 Ha

MEDIA LUNA RESOURCE AREA
Area: 150 Ha

Media Luna West
Area: 91 Ha

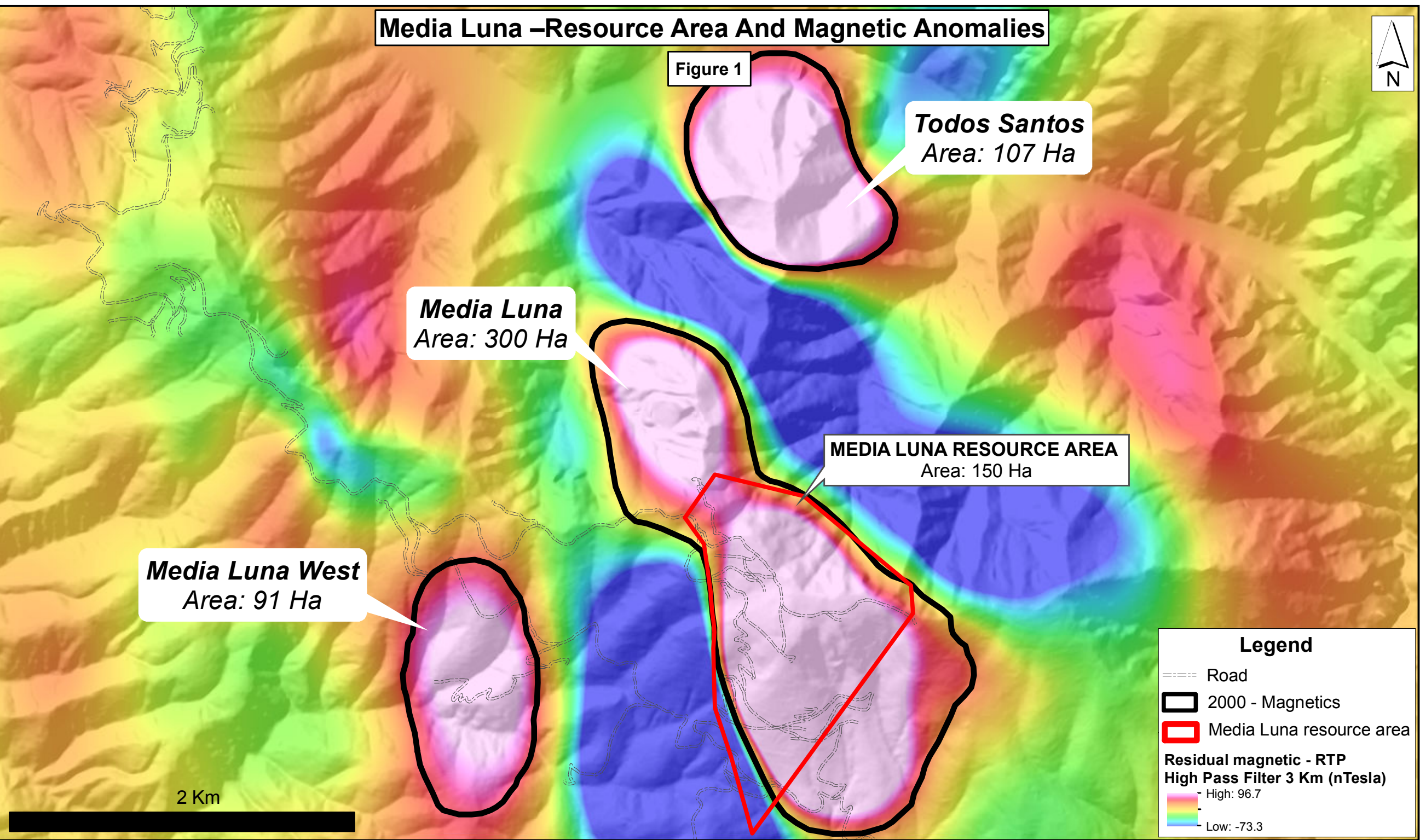
Legend

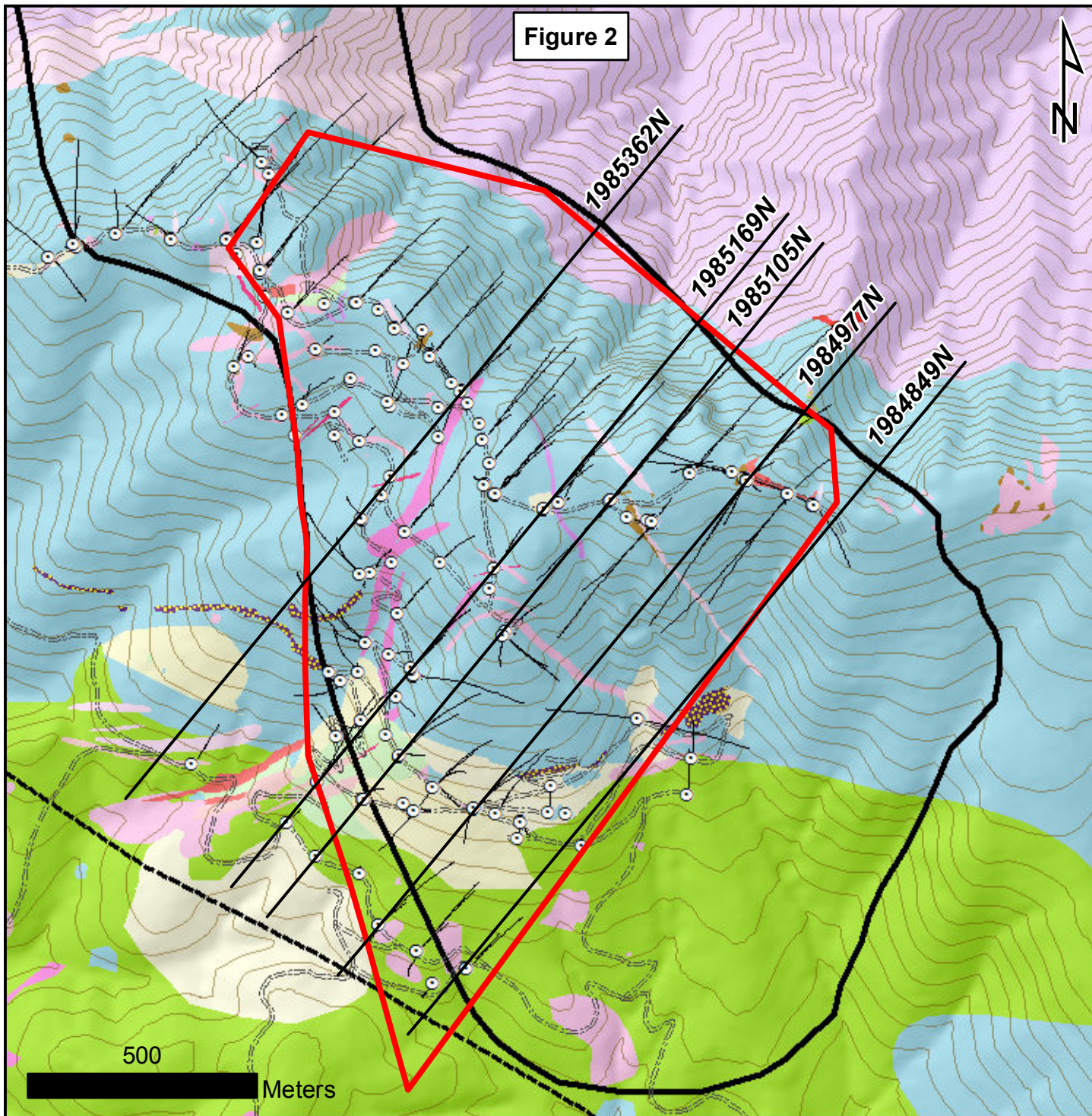
- ==== Road
- ▭ 2000 - Magnetics
- ▭ Media Luna resource area

Residual magnetic - RTP
High Pass Filter 3 Km (nTesla)

- High: 96.7
- Low: -73.3

2 Km





Legend

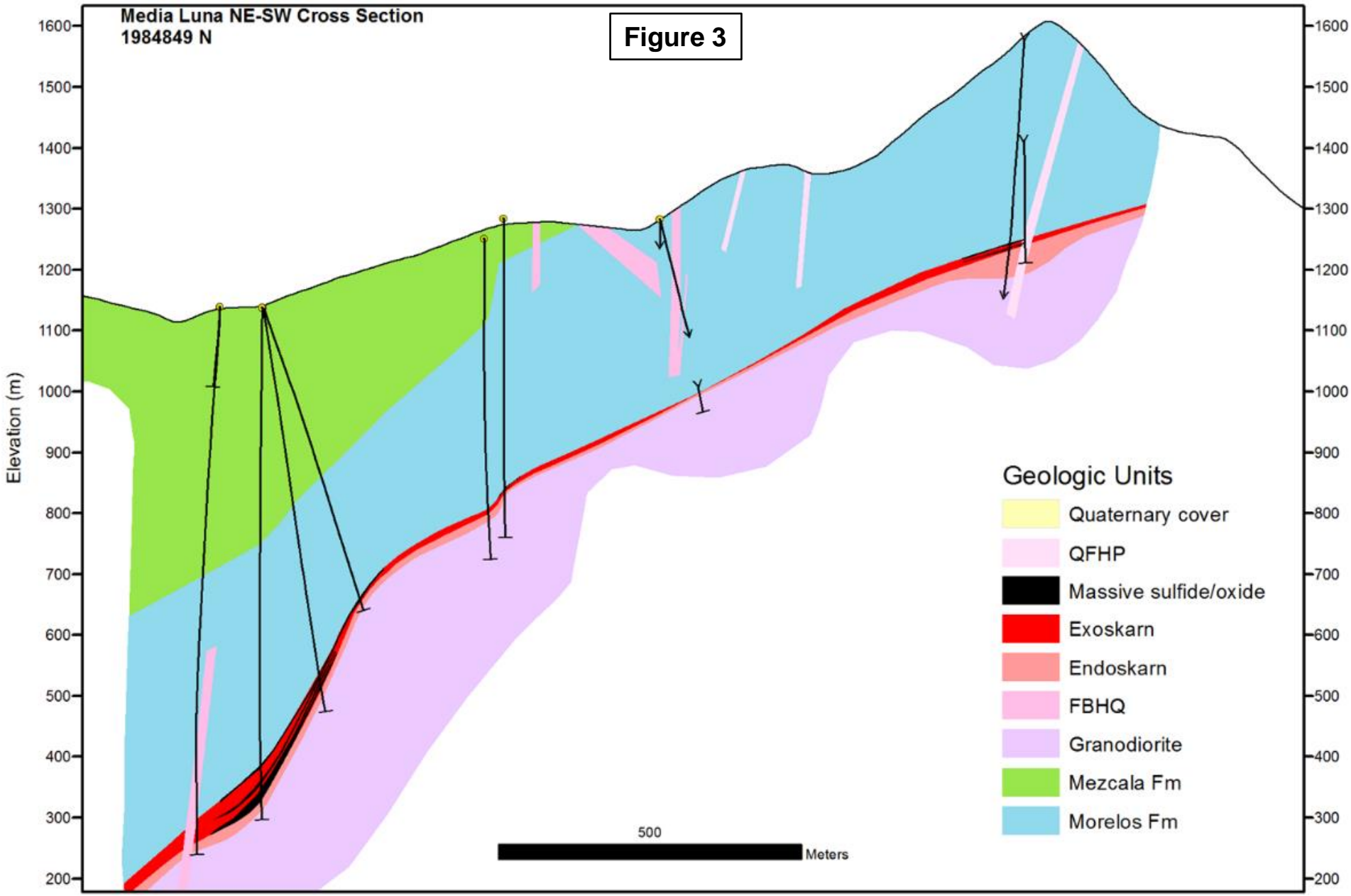
- Section line
- ⊙ DDH collar
- DDH trace
- ⋯ Road
- ▭ Media Luna resource area
- ▭ 2000 - Magnetics
- Structures

Lithology

- Jasperoid Breccia
- Quaternary cover
- Breccia
- QFHP
- FBP
- FBHQ
- FP
- FGB
- Hornfels
- Skarn
- Granodiorite
- Mezcala Fm.
- Morelos Fm.

Media Luna NE-SW Cross Section
1984849 N

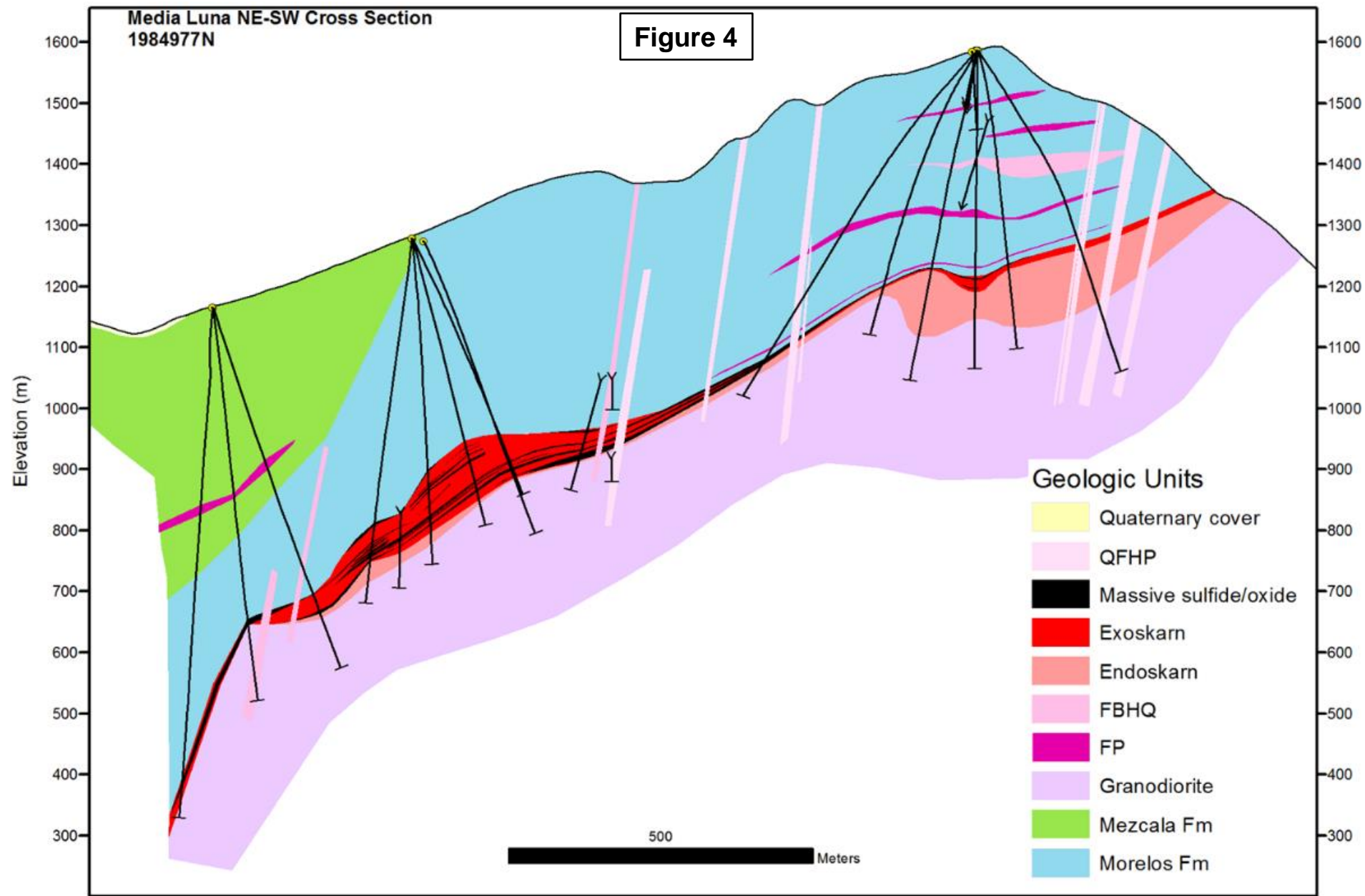
Figure 3



- Geologic Units**
- Quaternary cover
 - QFHP
 - Massive sulfide/oxide
 - Exoskarn
 - Endoskarn
 - FBHQ
 - Granodiorite
 - Mezcala Fm
 - Morelos Fm

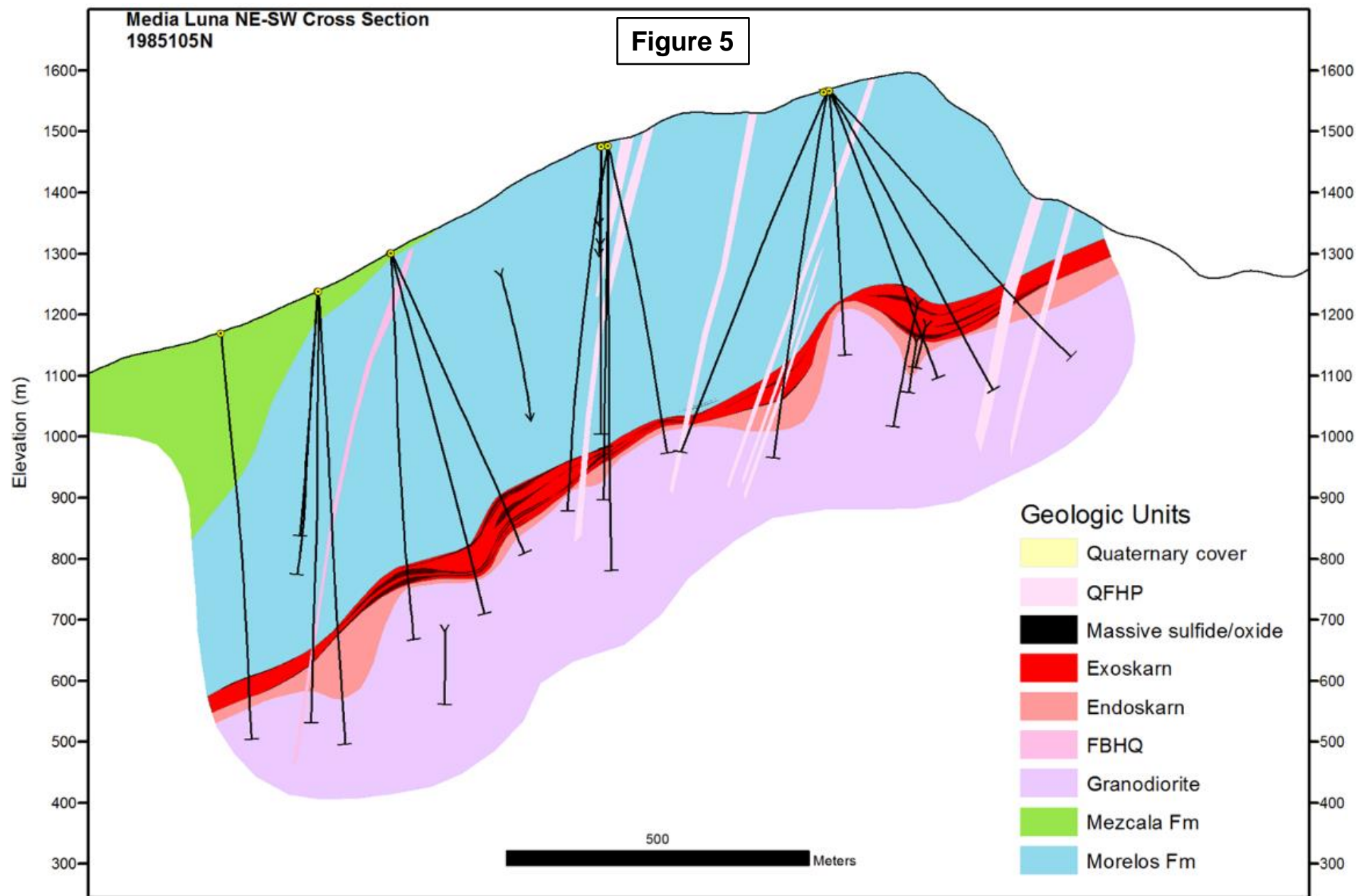
Media Luna NE-SW Cross Section
1984977N

Figure 4



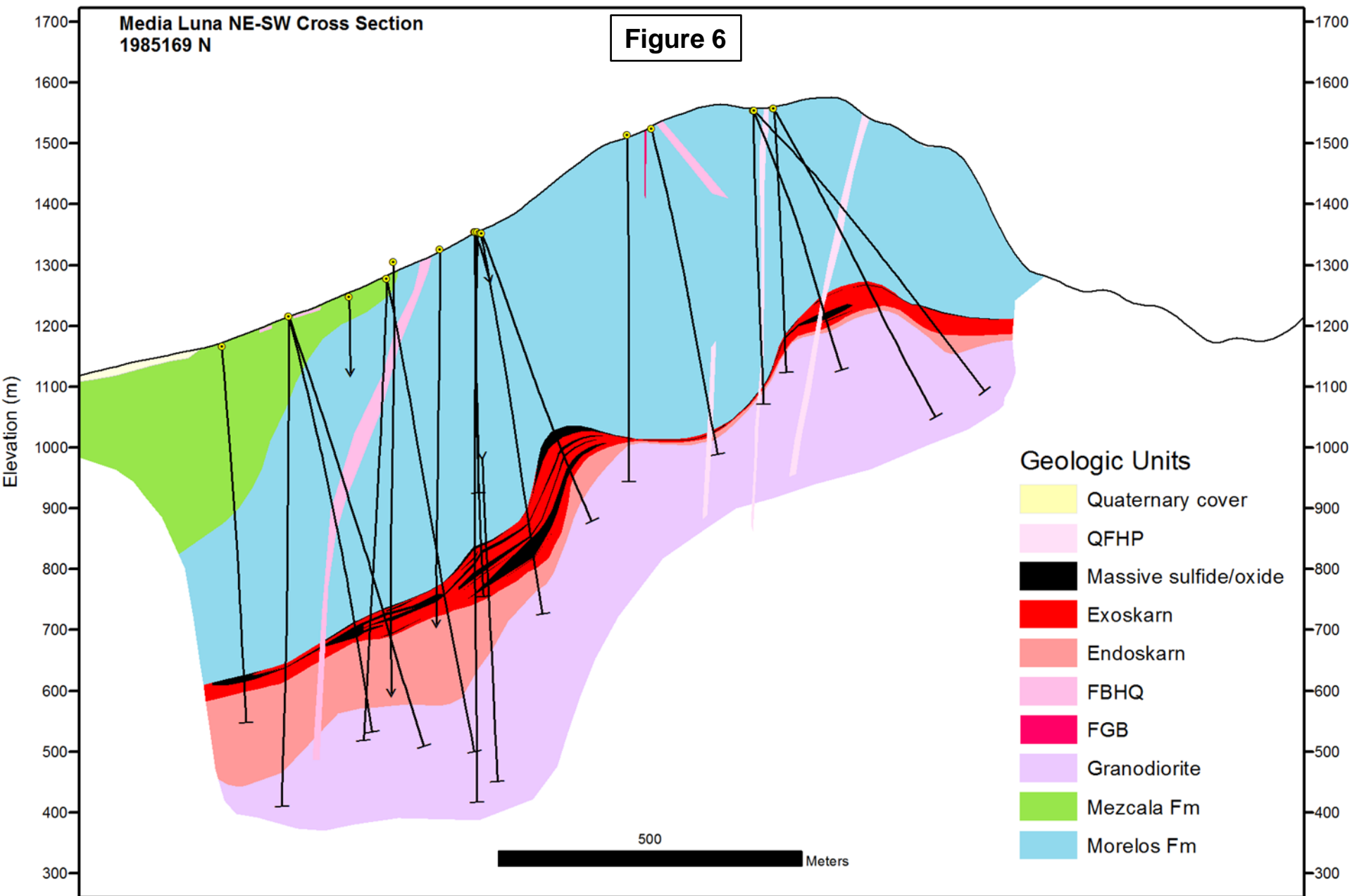
Media Luna NE-SW Cross Section
1985105N

Figure 5



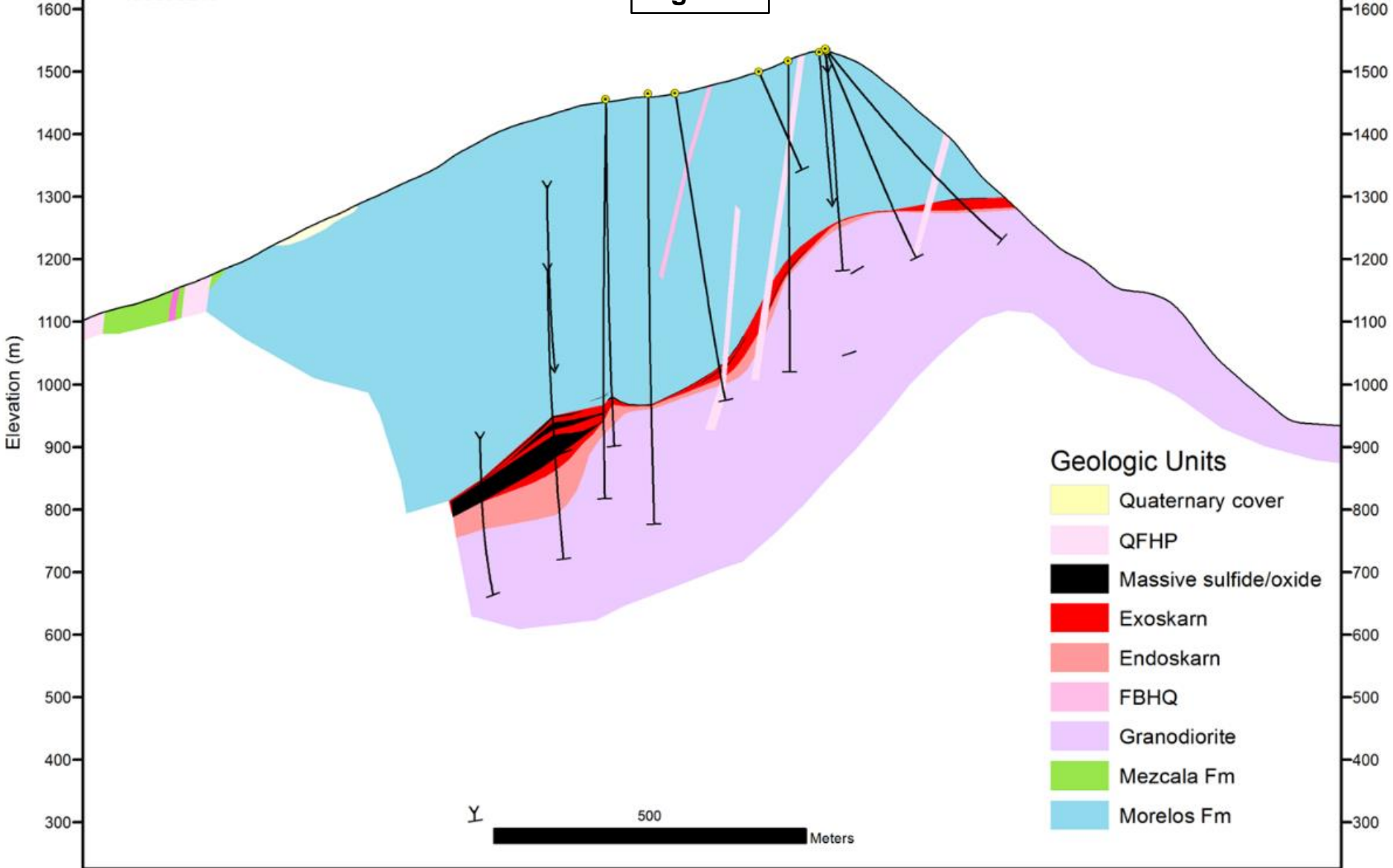
Geologic Units

- Quaternary cover
- QFHP
- Massive sulfide/oxide
- Exoskarn
- Endoskarn
- FBHQ
- Granodiorite
- Mezcala Fm
- Morelos Fm



Media Luna NE-SW Cross Section
1985362 N

Figure 7



- Geologic Units**
- Quaternary cover
 - QFHP
 - Massive sulfide/oxide
 - Exoskarn
 - Endoskarn
 - FBHQ
 - Granodiorite
 - Mezcala Fm
 - Morelos Fm