

**SUKARI GOLD PROJECT
AMUN DEEPS ZONE
LONG-SECTION - 10650mE
March 2008**

RCD1263	10050mN	65m @ 3.96g/t from 283m
RCD1177	10200mN	65m @ 18.31g/t from 367m (including 5m @ 209.42g/t)
RCD1178	10300mN	105m @ 4.10g/t from 380m and 17m @ 12.45g/t from 500m
RCD1124	10350mN	42m @ 6.24g/t from 326m and 27m @ 3.66g/t from 461m
RCD1143	10400mN	212m @ 2.37g/t from 311m
D1073	10450mN	197m @ 2.18g/t from 320m
D1280	10550mN	46m @ 2.21g/t from 469m and 35m @ 164.09g/t from 550m
RCD553	11075mN	111m @ 15.06g/t from 473m and 18m @ 2.59g/t from 595m

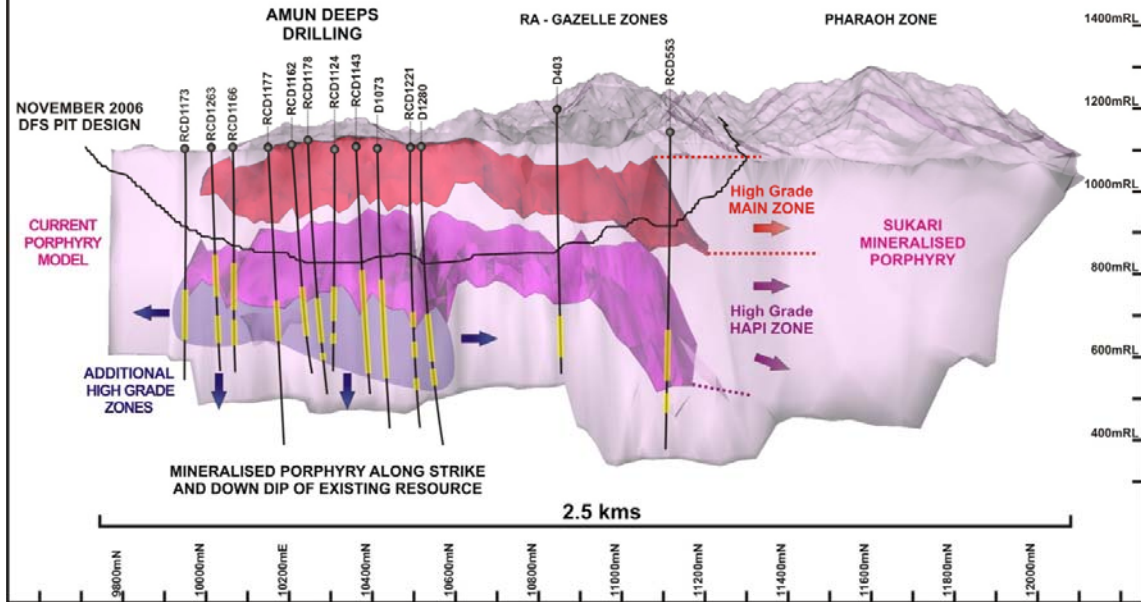


Figure 2 – Long section of Sukari showing the high grade mineralized structures (Main and Hapi Zone) and highlighting the drill intercepts through the Amun Deeps.