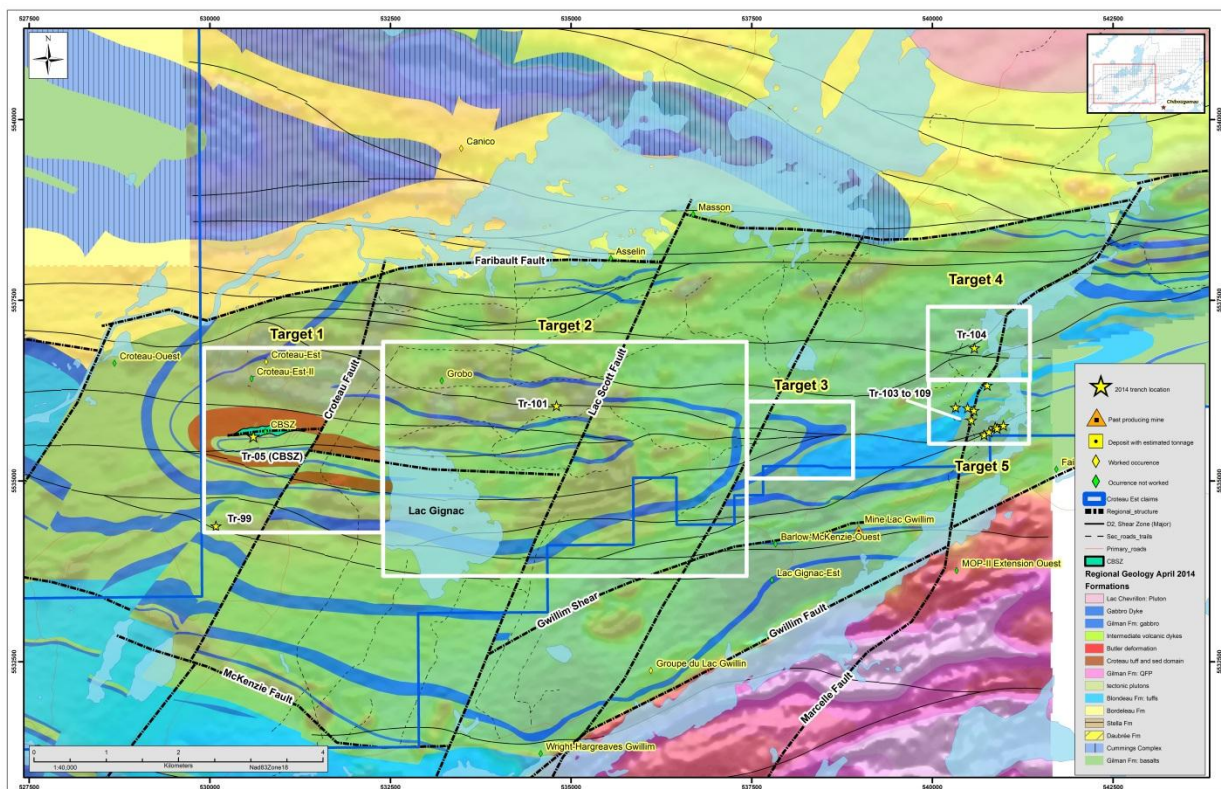




**NORTHERN SUPERIOR RESOURCES INC.**

1351C Kelly Lake Road  
 Sudbury, Ontario, Canada  
 P3E 5P5  
 Tel: (705) 525- 0992  
 Fax: (705) 525- 7701

**FIGURE 2 FOR NOVEMBER 3, 2014 NEWS RELEASE**



**Figure 2. Target Area # 1, and location of the CBSZ and Trench 05, Target Area # 2 and location of Trench 101, and Target Area # 5 and location of Trenches 103 to 109.**

**NORTHERN SUPERIOR RESOURCES: SUMMER EXPLORATION PROGRAM EXPANDS GOLD POTENTIAL, CROTEAU EST GOLD PROPERTY, QUÉBEC.**

**Table 2: Bedrock and Geochemical Characteristics of CBSZ Style Mineralization.**

<b>Croteau Est Prospect Area</b>	<b>Trench Location</b>	<b>Lithology</b>	<b>Average Channel Sample Assay: (g/t Au/m)</b>	<b>Ag ppm</b>	<b>As ppm</b>	<b>Bedrock Alteration</b>
Croteau Bouchard Shear Zone	Trench 05	sheared quartz-feldspar porphyry dyke	6.26 g/t Au/3.9 m	3.19	84.0	ankerite-sericite-quartz-pyrite-chalcopyrite
			8.49 g/t Au/5.7 m	4.44	153.0	ankerite-sericite-quartz-pyrite-chalcopyrite
Target 2	Trench 101	sheared gabbro	0.57 g/t Au/1.0 m	0.29	1215.0	ankerite-fuchsite-hematite-quartz-sericite-pyrite
Target 5	Trench 103	sheared feldspar porphyry dyke	0.76 g/t Au/1.0 m	0.23	0.46	albite-quartz-carbonate-sericite-pyrite
	Trench 106	quartz feldspar porphyry dyke	0.044 g/t Au/1.0 m	0.01		albite-quartz-carbonate-pyrite
	Trench 109	sheared mudstone / felsic tuff	0.005 g/t Au/1.0 m	0.38	11.8	quartz-carbonate-sericite-pyrite
	Trench 110	protomylonitic tuff	0.017 g/t Au/1.0 m	0.04	8.7	ankerite-sericite-quartz-pyrite