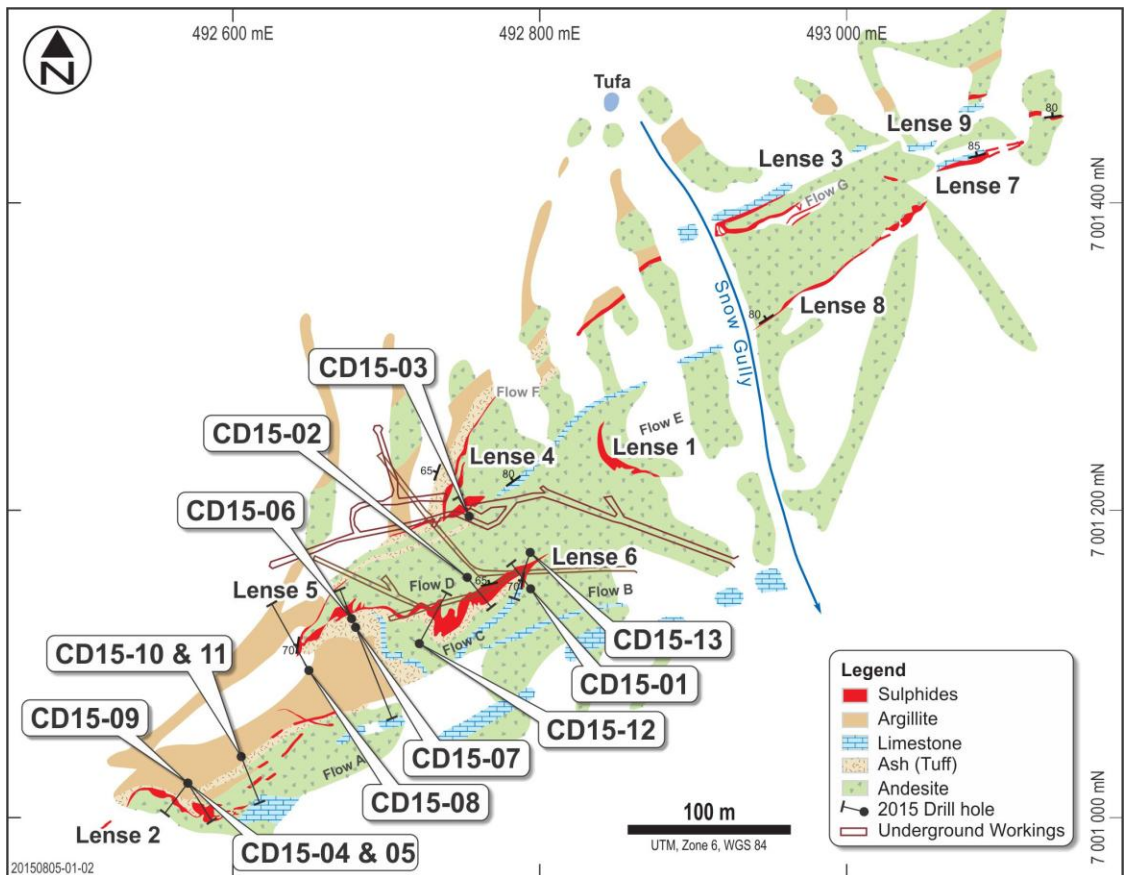
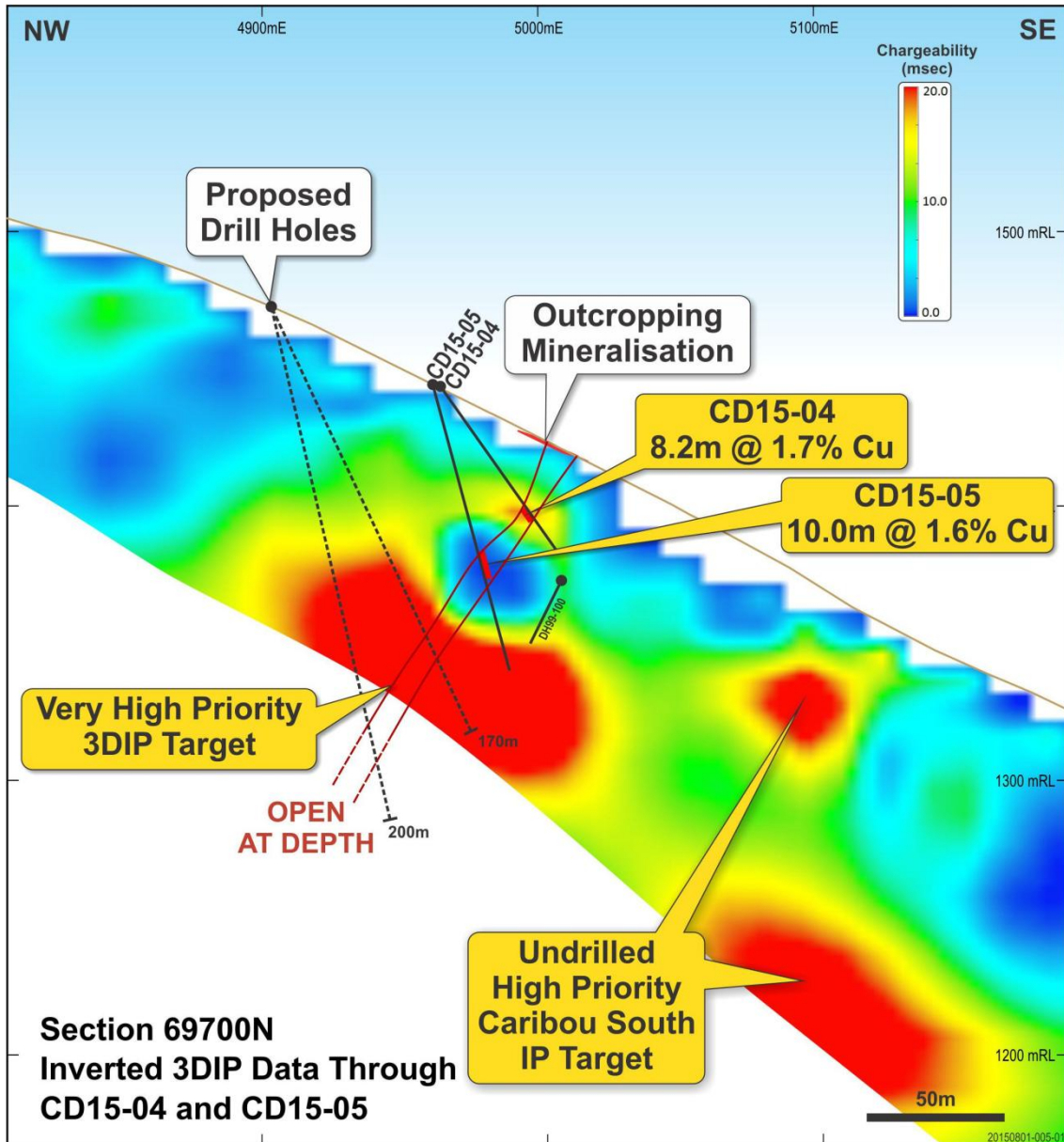


Figure 1. Cross section showing mineralisation in drill hole CD15-03 and other adjacent historic drill holes.



**Figure 2.** Geology around the nine known lenses of mineralisation at the Caribou Dome Copper Project, together with surface traces of underground development and locations of Coventry's recent drill holes.



**Figure 3.** Cross section of inverted 3DIP data through the central portion of Lense 2, showing mineralisation intersected in drill holes CD15-04 and CD15-05 together with, as yet untested, strong IP anomalies (i) immediately down-dip of (deeper than) that mineralisation at Lense 2, as well as (ii) parallel and adjacent to Lenses 2 and 6 at the Caribou South Target.