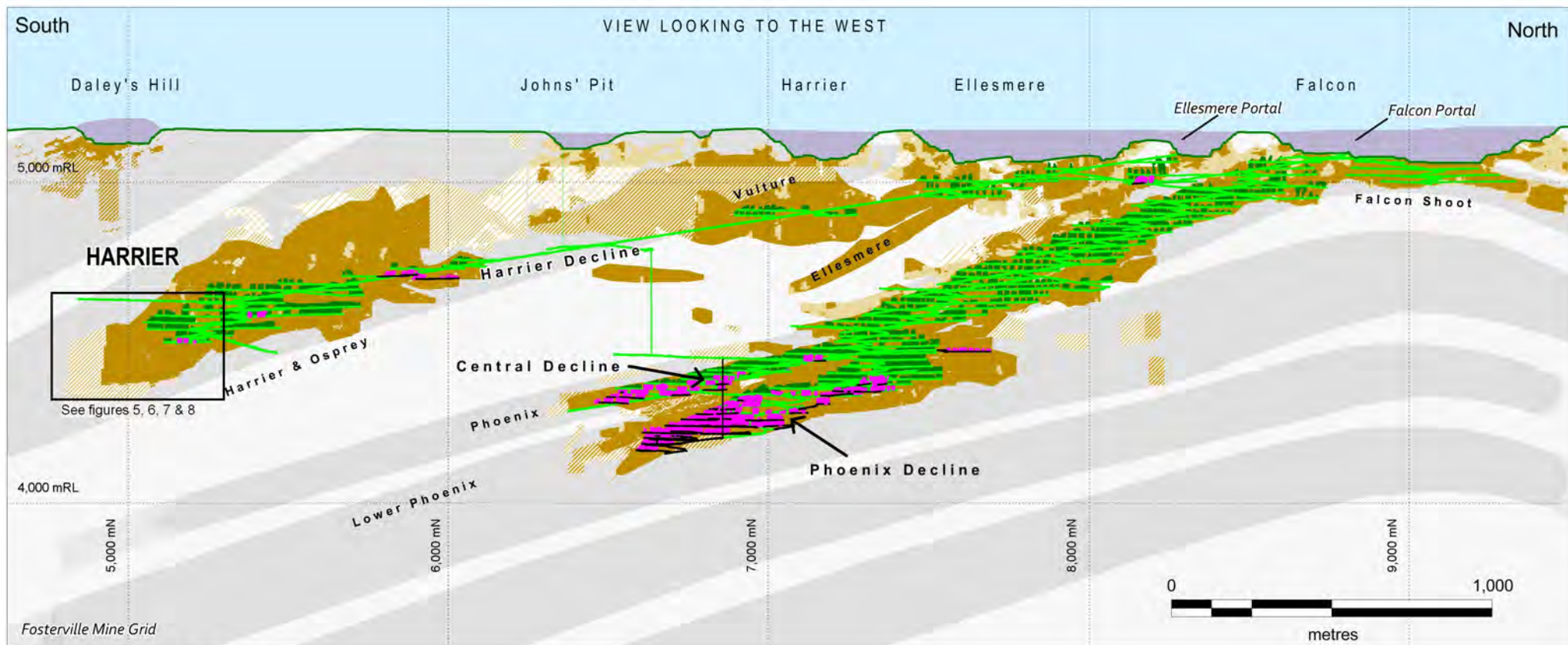


NewmarketGold

Figure 1

Location Plan, Fosterville Gold Mine

June 2016



LEGEND

RESOURCE GRADE SHELLS

Indicated

Inferred



>3 g/t Au



>3 g/t Au



1.5 g/t Au



1.5 g/t Au

MINING



Mined Open Pits



Target Trend



Mined Stopes



Mined Development



Reserve Stopes



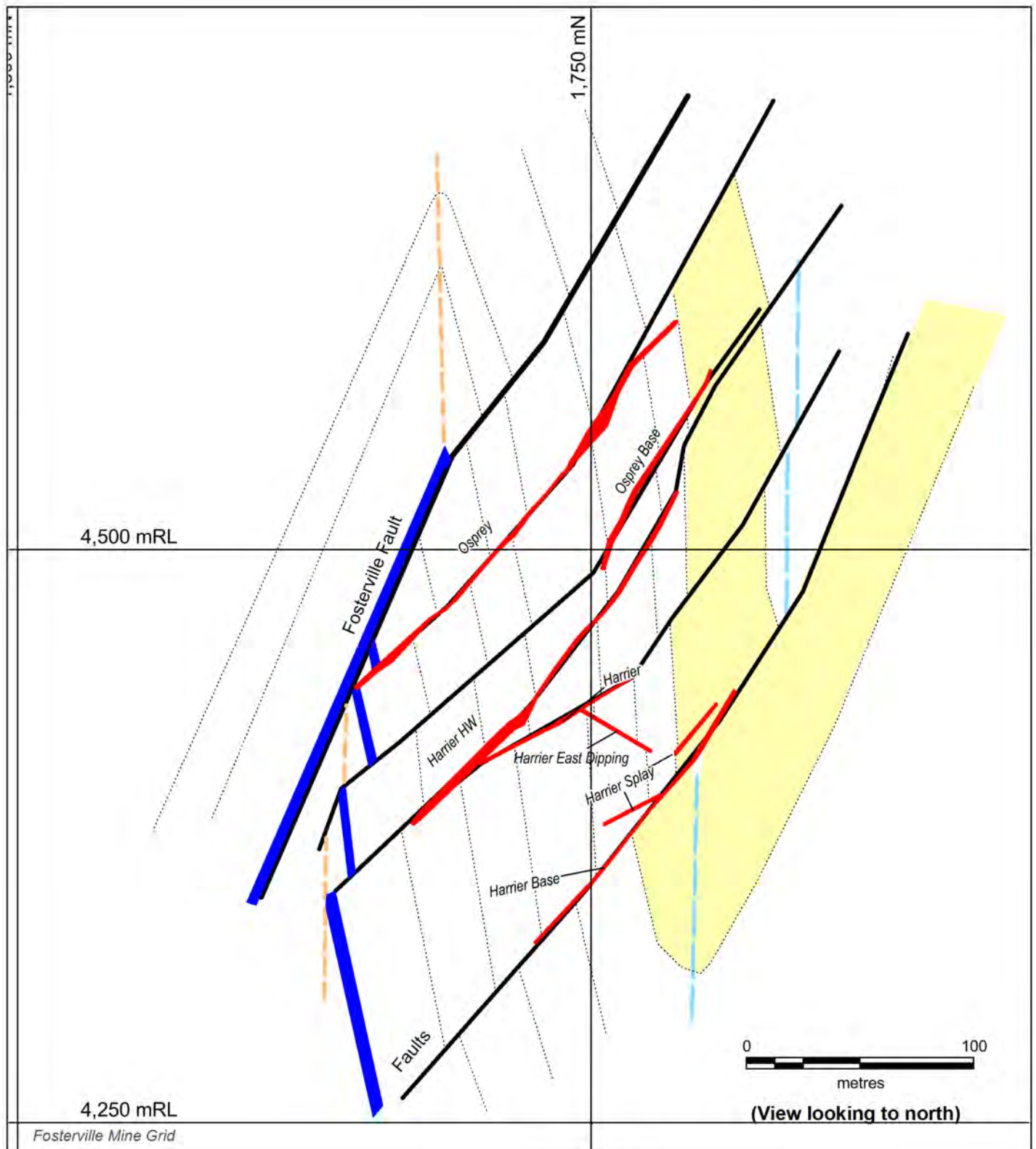
Mine Design

(December 2015 Resources, Reserves and June 2016 As Mined Development and stopes shown)

NewmarketGold

Figure 2: Fosterville Fault Zone Long Projection, FostervilleGold Mine

June 2016



LEGEND

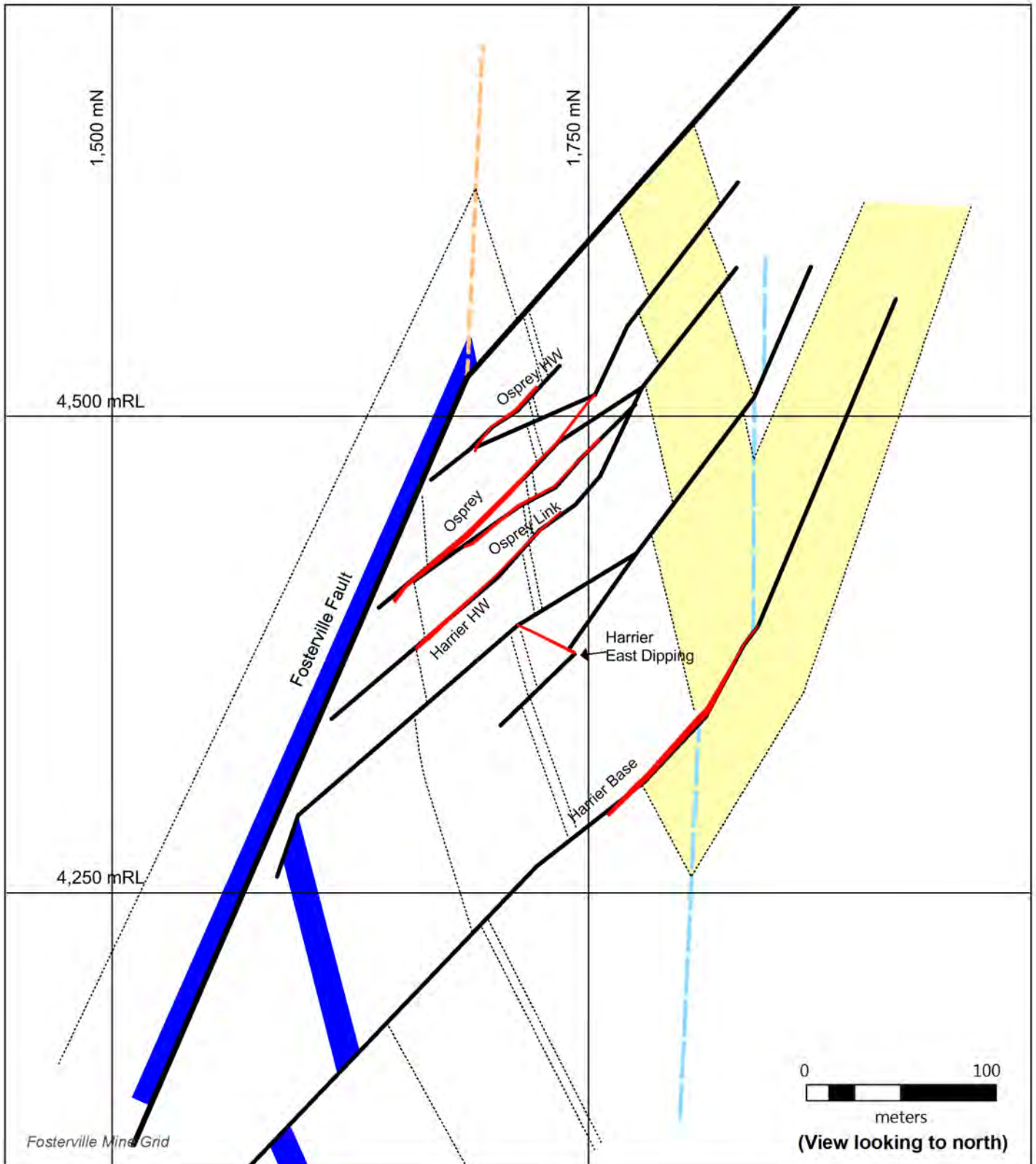
- Harrier Shale
- Kestrel Shale
- Gold Mineralization
- Fault
- Minor Fault
- Syncline
- Anticline
- Bedding Form Line

NewmarketGold

**Harrier 5050mN
Schematic Geological
Cross-Section,
Fosterville Gold Mine**

Figure 3

June 2016



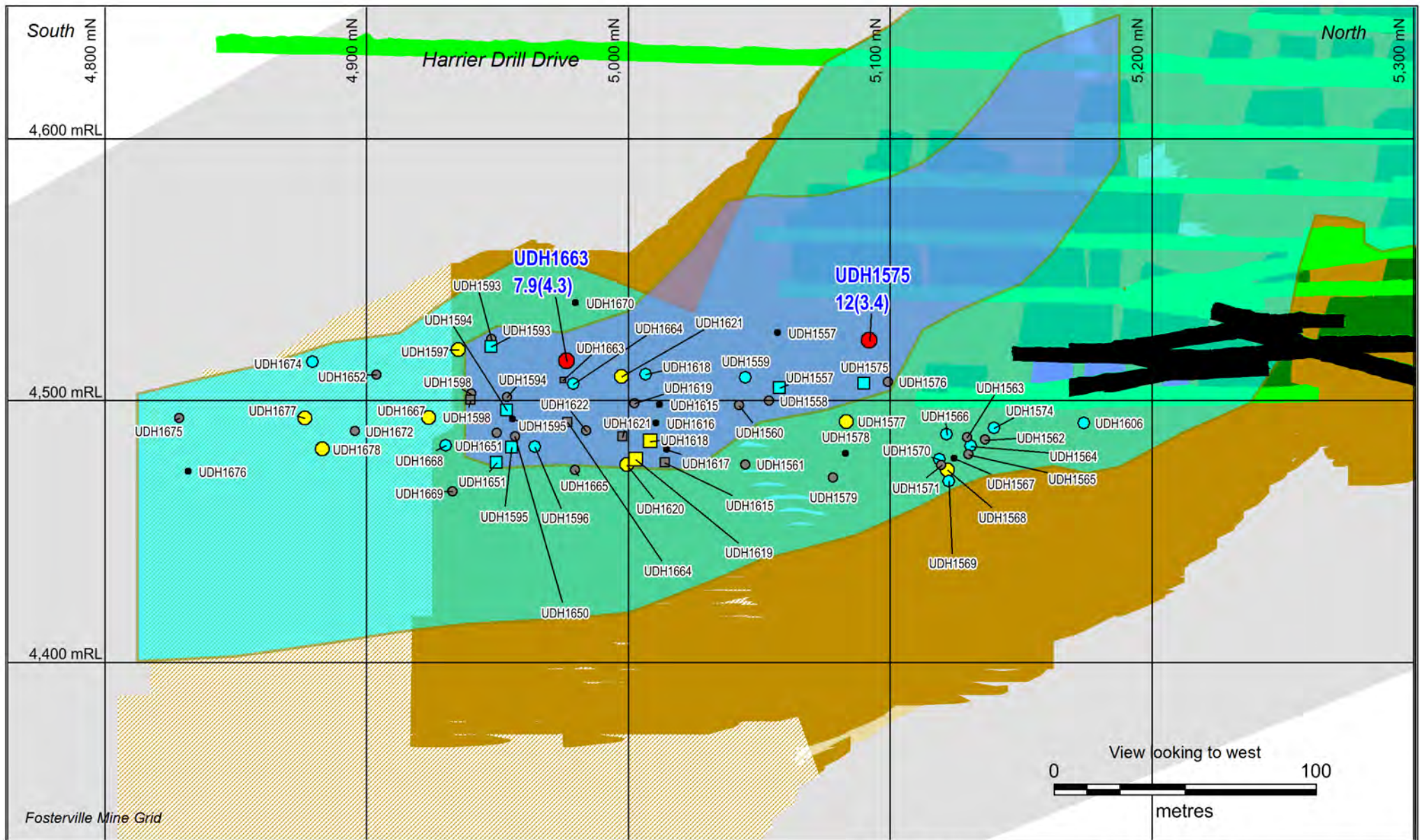
LEGEND

- Harrier Shale
- Kestrel Shale
- Gold Mineralization
- Fault
- Minor Fault
- Syncline
- Anticline
- Bedding Form Line

NewmarketGold
Harrier 4850mN
Schematic Geological
Cross-Section,
Fosterville Gold Mine

Figure 4

June 2016



MINING

- Mined Stopes
- Reserve
- Mined Development
- Mine Design

(Mineral Resources, Reserves and Mining as at December 31, 2015)

RESOURCE GRADE SHELLS

- | | |
|--|---|
| <p>Indicated</p> <ul style="list-style-type: none"> >3 g/t Au 1.5 g/t Au | <p>Inferred</p> <ul style="list-style-type: none"> >3 g/t Au 1.5 g/t Au |
|--|---|

TARGET AREAS

- Trend
- Osprey
- Osprey Base

DRILL INTERCEPTS
(Coloured By *Gram-Metre)

- >30
- 15 to 30
- 5 to 15
- 1 to 5
- 0 to 1

DRILL INTERCEPT LABELS
(Shown for >30 *Gram-Metres or Visible Gold)

- Hole Name
- Grade (g/t Au) & (Estimated True Width (m))
- Visible Gold highlighted in yellow

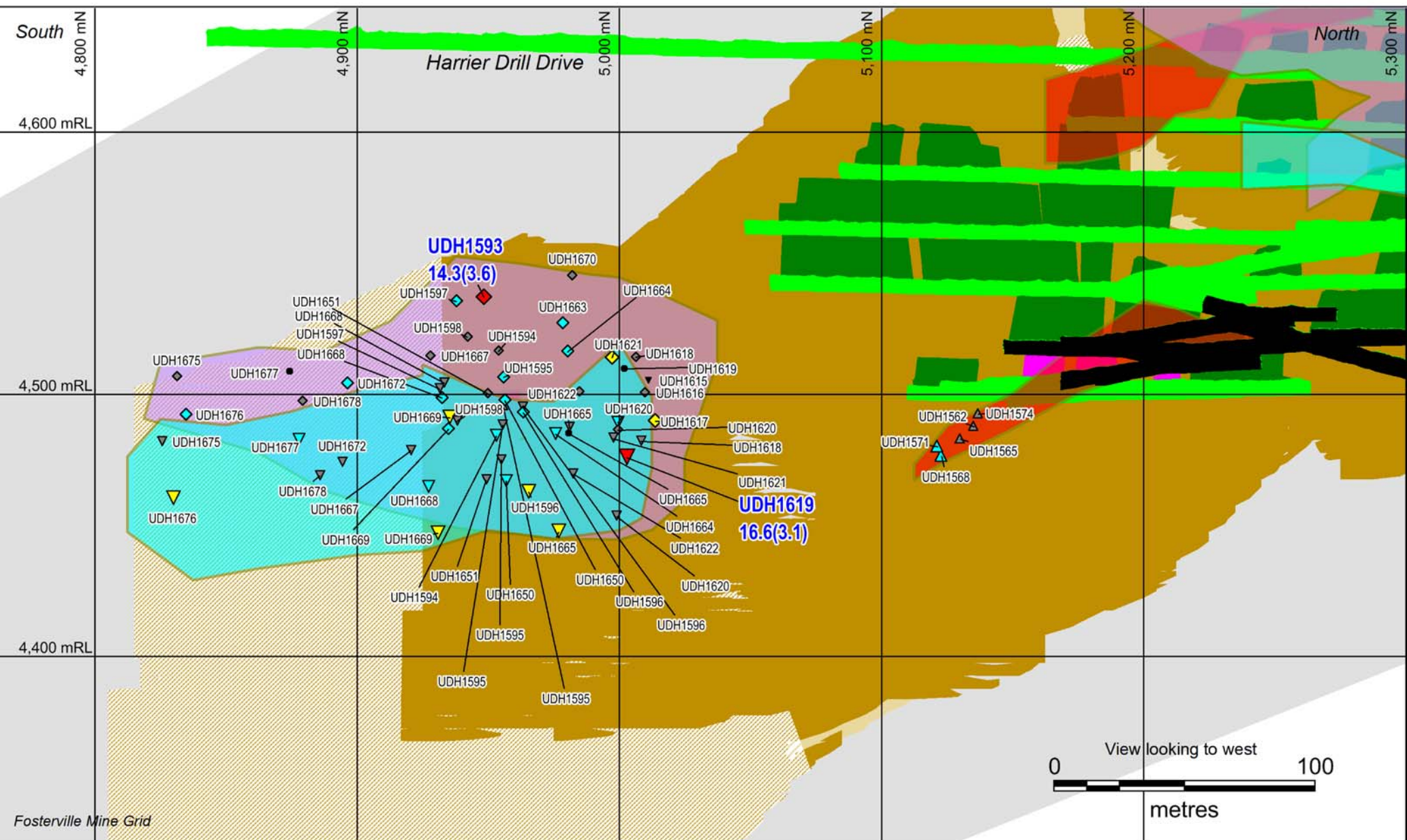
*Gram-Metre = Gold Grade x Estimated True Width

MINERALIZATION

- Osprey Base
- Osprey

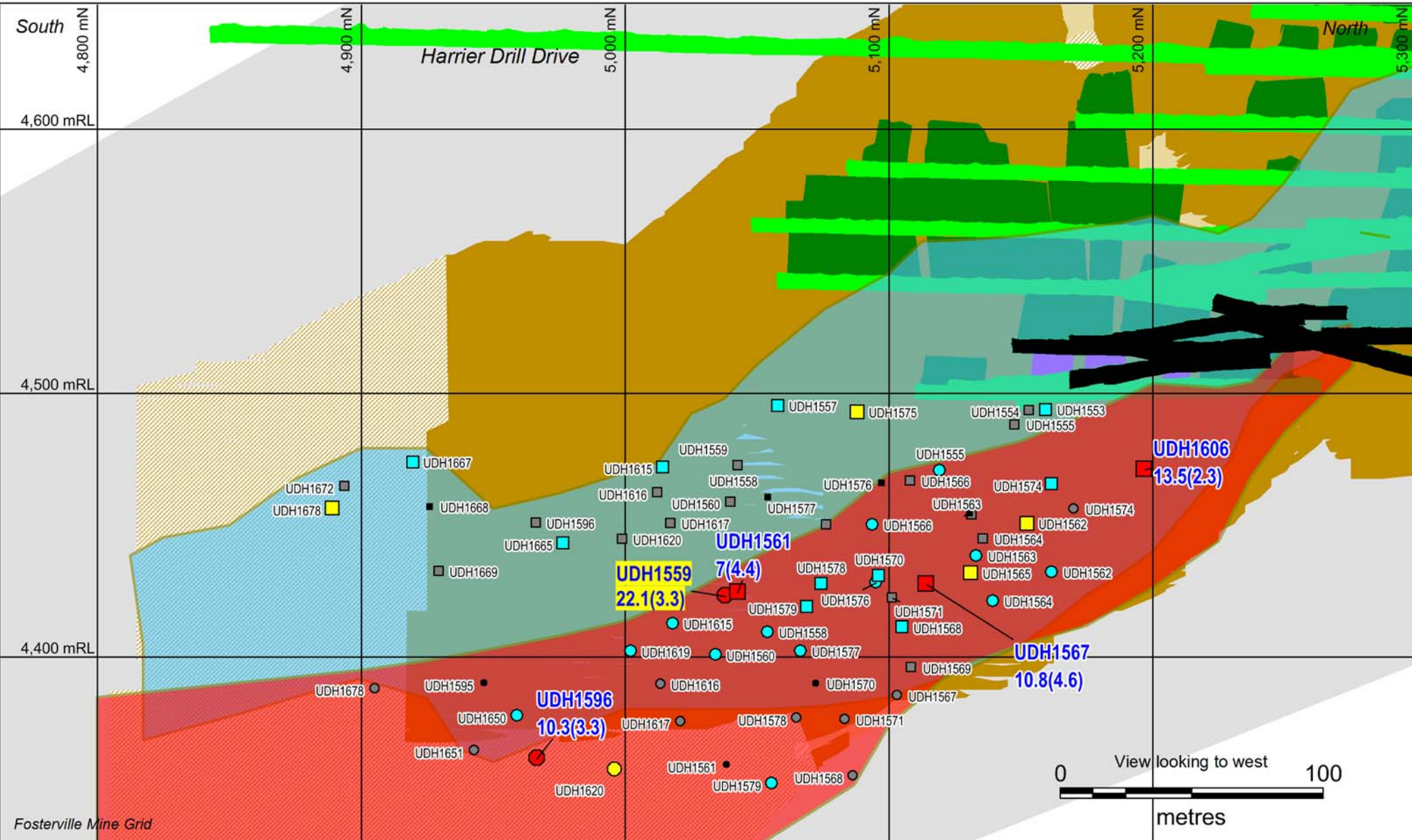
NewmarketGold

Figure 5 Longitudinal Projection of Osprey & Osprey Base Mineralization, Fosterville Gold Mine



<p>MINING</p> <ul style="list-style-type: none"> Mined Stopes Reserve Mined Development Mine Design <p><i>(Mineral Resources, Reserves and Mining as at December 31, 2015)</i></p>	<p>RESOURCE GRADE SHELLS</p> <table border="0"> <tr> <td>Indicated</td> <td>Inferred</td> </tr> <tr> <td> >3 g/t Au</td> <td> >3 g/t Au</td> </tr> <tr> <td> 1.5 g/t Au</td> <td> 1.5 g/t Au</td> </tr> </table>	Indicated	Inferred	 >3 g/t Au	 >3 g/t Au	 1.5 g/t Au	 1.5 g/t Au	<p>TARGET AREAS</p> <ul style="list-style-type: none"> Trend <p>Structure</p> <ul style="list-style-type: none"> Osprey Hanging Wall Osprey Link Osprey Splays 	<p>DRILL INTERCEPTS (Coloured By *Gram-Metre)</p> <ul style="list-style-type: none"> >30 15 to 30 5 to 15 1 to 5 0 to 1 	<p>DRILL INTERCEPT LABELS (Shown for >30 *Gram-Metres or Visible Gold)</p> <ul style="list-style-type: none"> Hole Name Grade (g/t Au) & (Estimated True Width (m)) Visible Gold highlighted in yellow <p>*Gram-Metre = Gold Grade x Estimated True Width</p> <p>MINERALIZATION</p> <ul style="list-style-type: none"> Osprey Link Osprey Hanging Wall Osprey Splays
Indicated	Inferred									
 >3 g/t Au	 >3 g/t Au									
 1.5 g/t Au	 1.5 g/t Au									

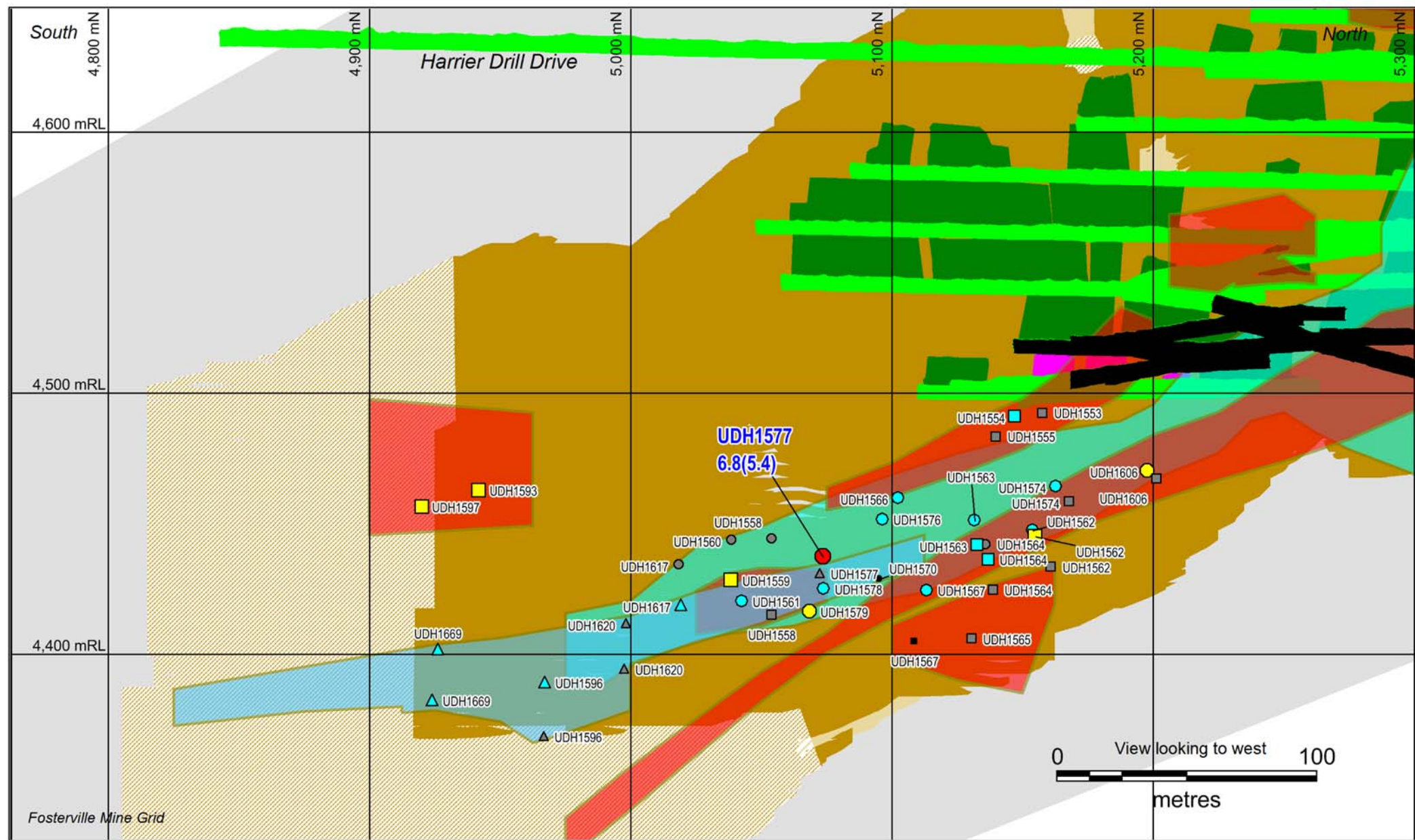
Figure 6 Longitudinal Projection of Osprey HW, Link & Splays Mineralization, Fosterville Gold Mine



MINING Mined Stopes Mined Development <i>(Mineral Resources, Reserves and Mining as at December 31, 2015)</i>		RESOURCE GRADE SHELLS Indicated >3 g/t Au 1.5 g/t Au Inferred >3 g/t Au 1.5 g/t Au		TARGET AREAS Trend Structure Harrier Base Harrier Hanging Wall		DRILL INTERCEPTS (Coloured By *Gram-Metre) >30 15 to 30 5 to 15 1 to 5 0 to 1		DRILL INTERCEPT LABELS (Shown for >30 *Gram-Metres or Visible Gold) Hole Name Grade (g/t Au) & (Estimated True Width (m)) Visible Gold highlighted in yellow *Gram-Metre = Gold Grade x Estimated True Width	
		MINERALIZATION Harrier Base Harrier Hanging Wall							

NewmarketGold

Figure 7 Longitudinal Projection of Harrier Base & Harrier Hanging Wall Mineralization, Fosterville Gold Mine



MINING

- Mined Stopes
 - Reserve
 - Mined Development
 - Mine Design
- (Mineral Resources, Reserves and Mining as at December 31, 2015)*

RESOURCE GRADE SHELLS

- | | |
|---|---|
| Indicated | Inferred |
| >3 g/t Au | >3 g/t Au |
| 1.5 g/t Au | 1.5 g/t Au |

TARGET AREAS

- Trend
- Structure
- Harrier
- Harrier Splay
- Harrier East Dipping

DRILL INTERCEPTS
(Coloured By *Gram-Metre)

- >30
- 15 to 30
- 5 to 15
- 1 to 5
- 0 to 1

DRILL INTERCEPT LABELS
(Shown for >30 *Gram-Metres or Visible Gold)

- Hole Name
 - Grade (g/t Au) & (Estimated True Width (m))
 - Visible Gold highlighted in yellow
- *Gram-Metre = Gold Grade x Estimated True Width

- MINERALIZATION**
- Harrier
 - Harrier Splay
 - Harrier East Dip

NewmarketGold

Figure 8 Longitudinal Projection of Harrier, Harrier Splay & Harrier East Dipping Mineralization, Fosterville Gold Mine