

**MINING**

- Mined Stopes
- Mined Development

(Mineral Resources, Reserves and Mining as at December 31, 2015)

- Reserve
- Mine Design

**RESOURCE GRADE SHELLS**

- |   |  |
|---|--|
| <b>Indicated</b>                                | <b>Inferred</b>  |
| <span style="color: brown;">■</span> >3 g/t Au  | <span style="border: 1px dashed brown; width: 20px; height: 10px; display: inline-block;"></span> >3 g/t Au  |
| <span style="color: olive;">■</span> 1.5 g/t Au | <span style="border: 1px dashed olive; width: 20px; height: 10px; display: inline-block;"></span> 1.5 g/t Au |

**LEGEND**

- TARGET AREAS**
- Trend
- MINERALIZATION**
- Lower Phoenix FW

**DRILL INTERCEPTS**

- (Coloured By \*Gram-Metre)
- >30
  - 15 to 30
  - 5 to 15
  - 1 to 5
  - 0 to 1

**DRILL INTERCEPT LABELS**

- (Shown for >30 \*Gram-Metres or Visible Gold)
- Hole Name
  - Grade (g/t Au) & (Estimated True Width (m))
  - Visible Gold highlighted in yellow

\*Gram-Metre = Gold Grade x Estimated True Width

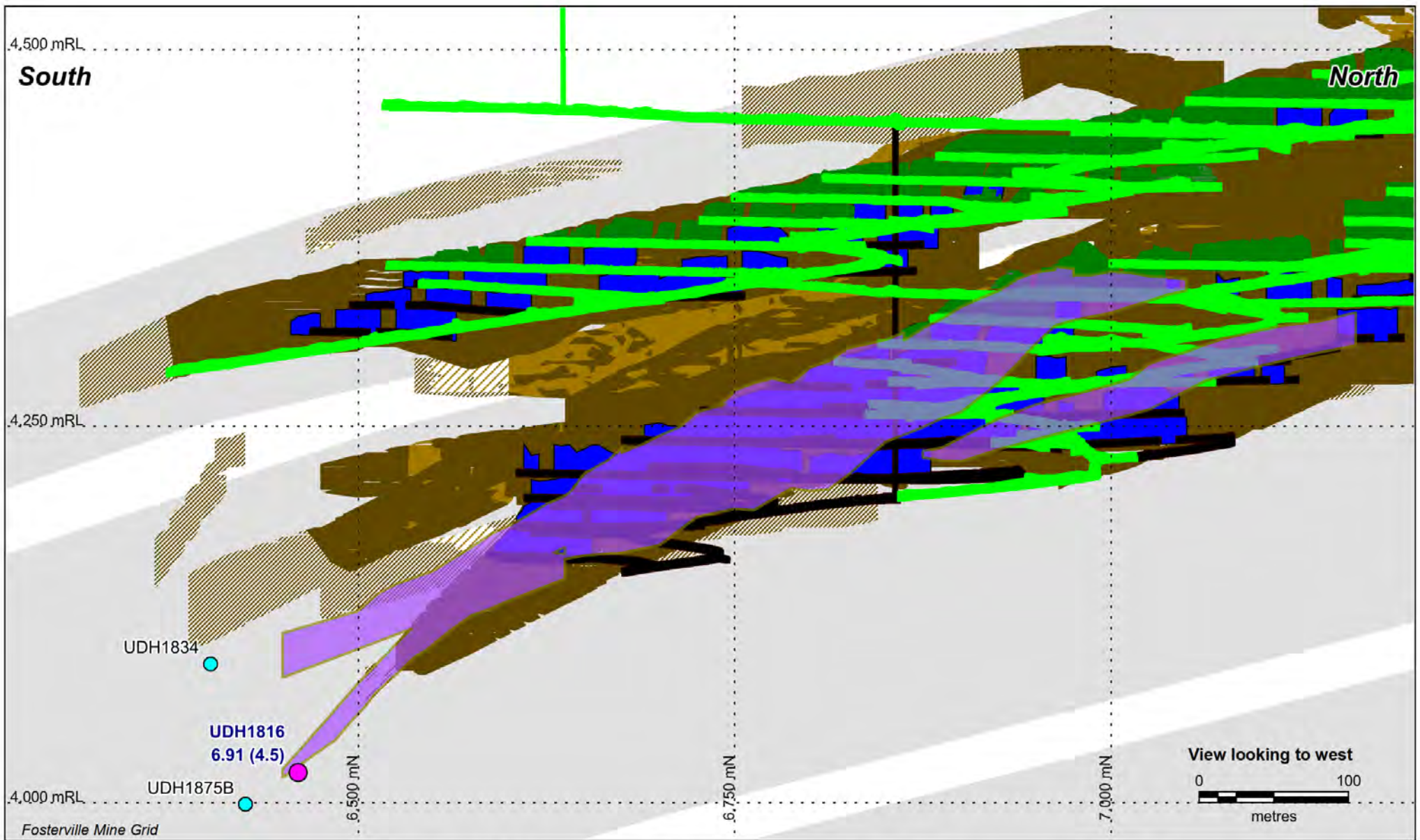
NewmarketGold

Figure 2

Longitudinal Projection of Lower Phoenix FW Mineralization, Fosterville Gold Mine

November 2016





NewmarketGold

Figure 3

Longitudinal Projection of Eagle Mineralization, Fosterville Gold Mine

November 2016



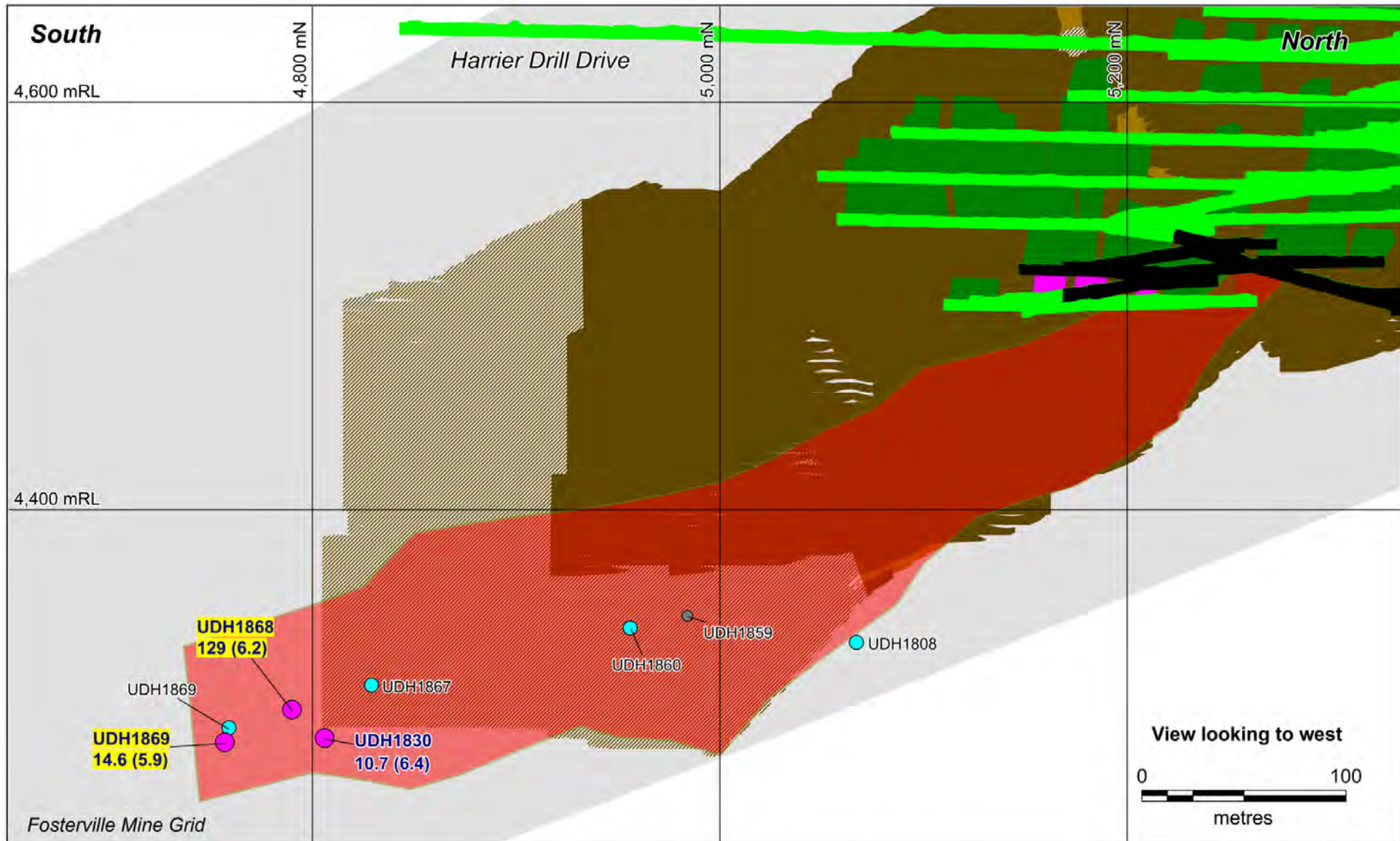


Figure 4

Longitudinal Projection of Harrier Base Mineralization, Fosterville Gold Mine