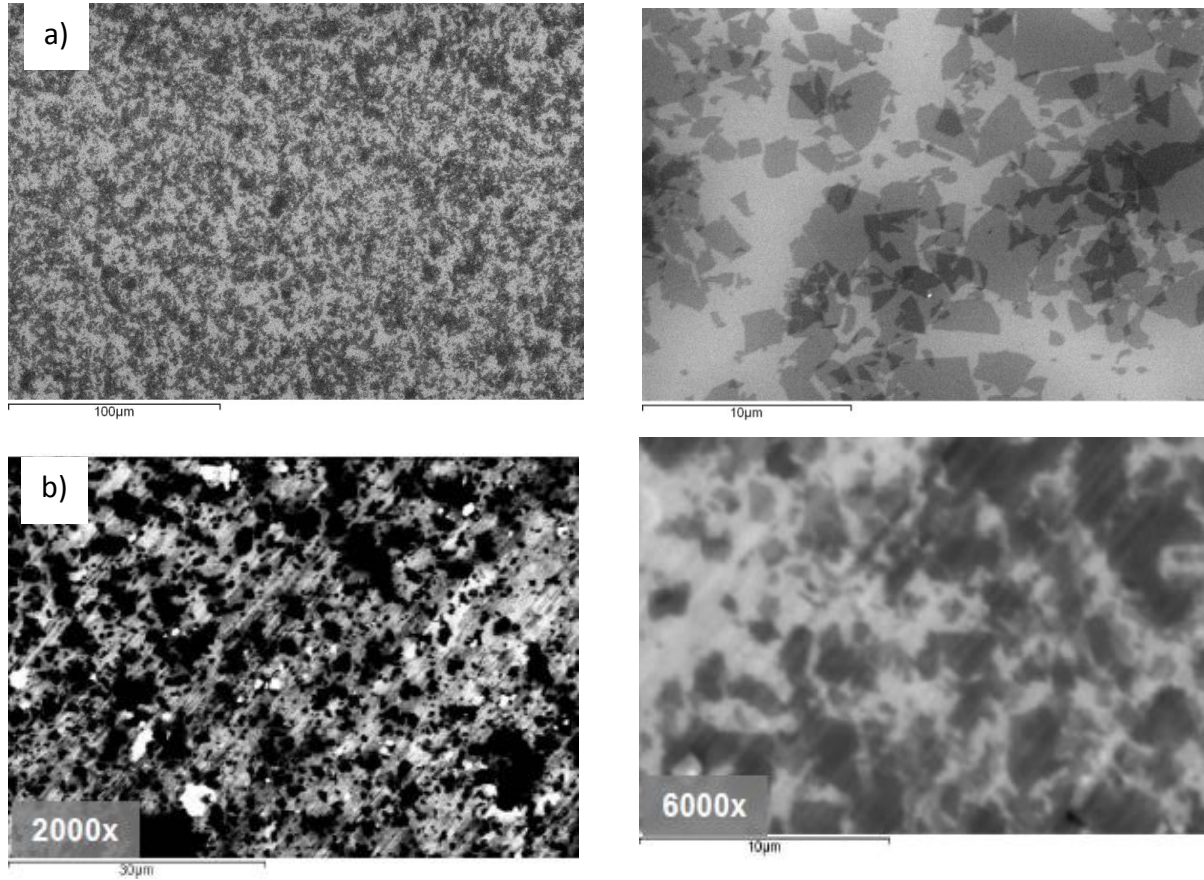


## Images



*Figure 1. Scanning Electron Images at various magnifications showing the structure of graphene-based coatings deposited on a) Si wafers, and b) Al substrate which were intentionally partially covered.*

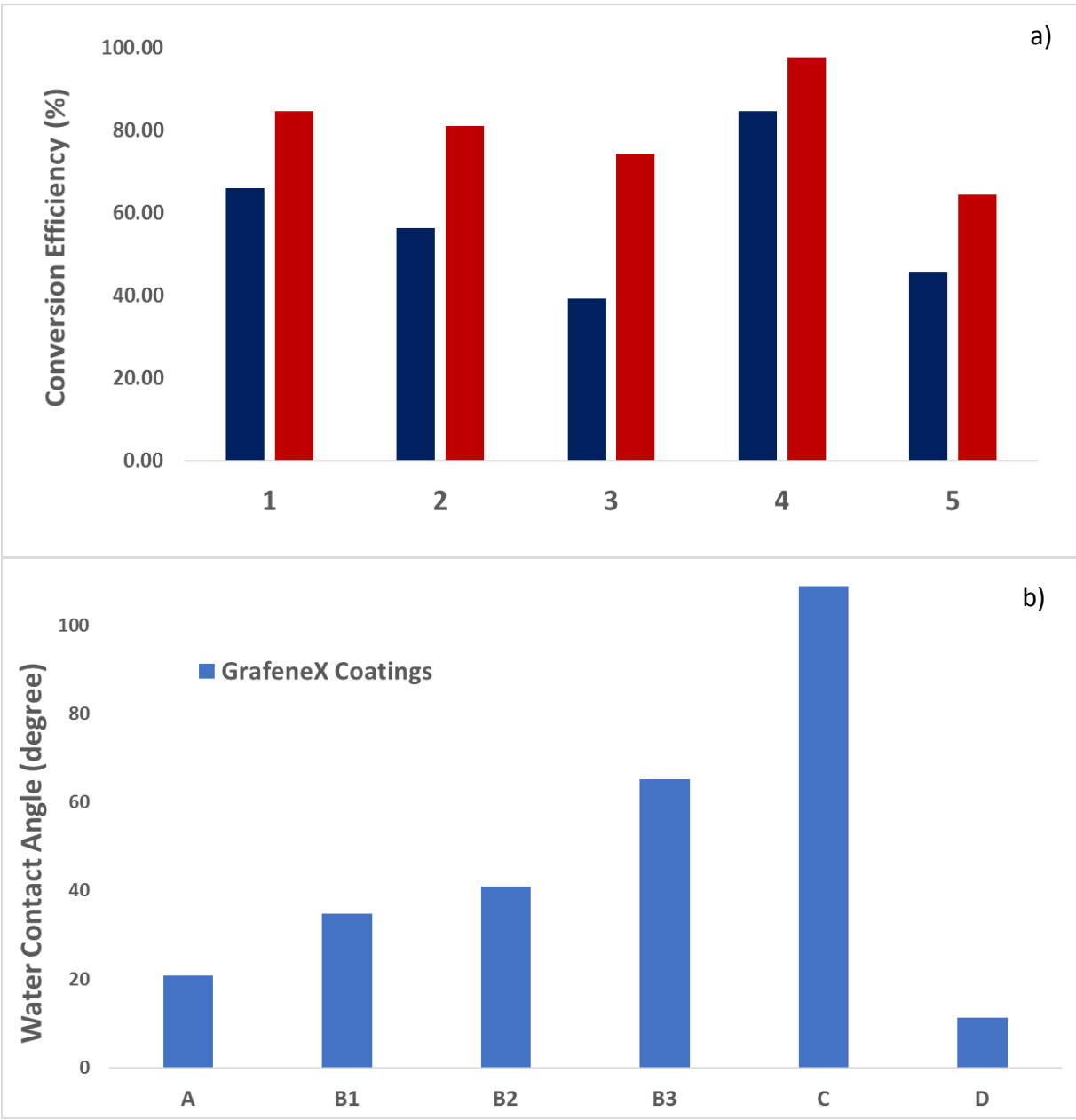


Figure 2. a) Conversion efficiencies for different process conditions, and b) Examples of water contact angle values measured on various GrafeneX coatings.

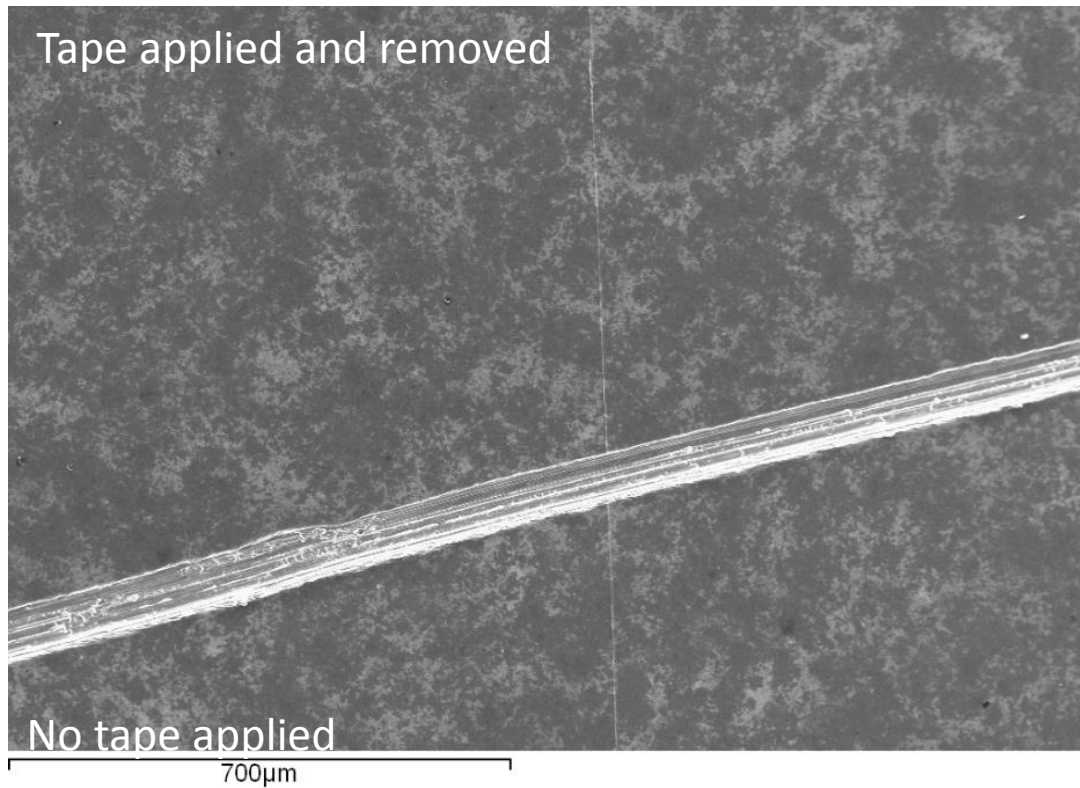


Figure 3. Scanning Electron Image showing the ASTM D 3359 test results for a GrafeneX B coating deposited on an aluminum substrate. The test applies a Permacel 99 polyester fiber packaging tape to one portion of the sample in order to quantify the coating adhesion. The scratch has been applied to surface of Al to indicate where tape has and has not been applied.