

Figure 1: Aeromagnetic data, structural interpretation and artisanal workings (red). Note red points indicate artisanal workings in saprolite and define the Jons Pit-Texas trend. Alluvial workings are concentrated around the Central Ridge and Jons Pit-Texas prospects within a rhombic dilational zone hosted in a regional scale shear zone. Blue to green colours represent low magnetic susceptibility, yellow-red-pink represent moderate to high magnetic susceptibility.

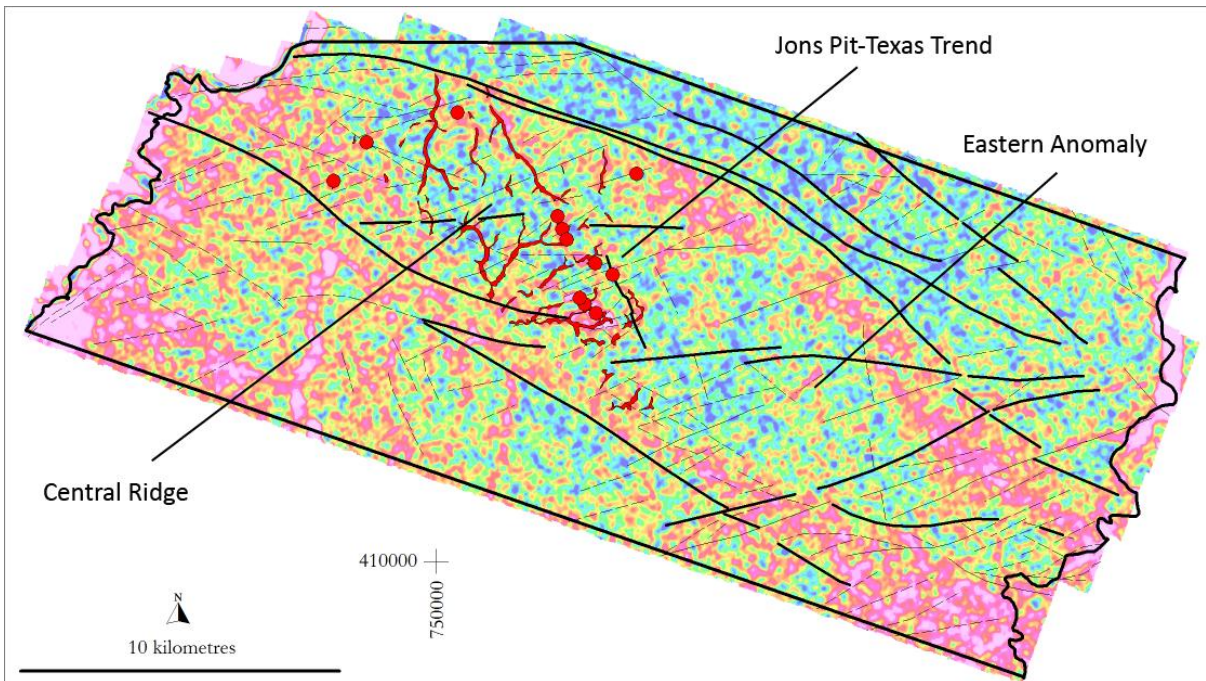


Figure 2: Potassium data, structural interpretation and artisanal workings (red). Note the coincident magnetic and potassium anomalies at Eastern Anomaly interpreted as hydrothermal alteration. Blue to green colours represent low potassium, yellow-red-pink represent moderate to high potassium.



Figure 3: View northwest along the Jons Pit target. Note three subparallel pits over a total width of 100 metres. Pits have exploited iron oxide stained shear zones and subvertical, deformed quartz veins hosted in greenstone facies metasedimentary rocks.