

Figure 1: Plan map showing distribution of ITH drilling and status of assaying as at 30 November 2008. New assays have continued to expand the higher grade Core Zone. Drill holes with new assays are shown in red; the four new holes that have continuous intercepts of greater than 50 meters with grades in excess of 1g/t gold are shown with larger collars in magenta.

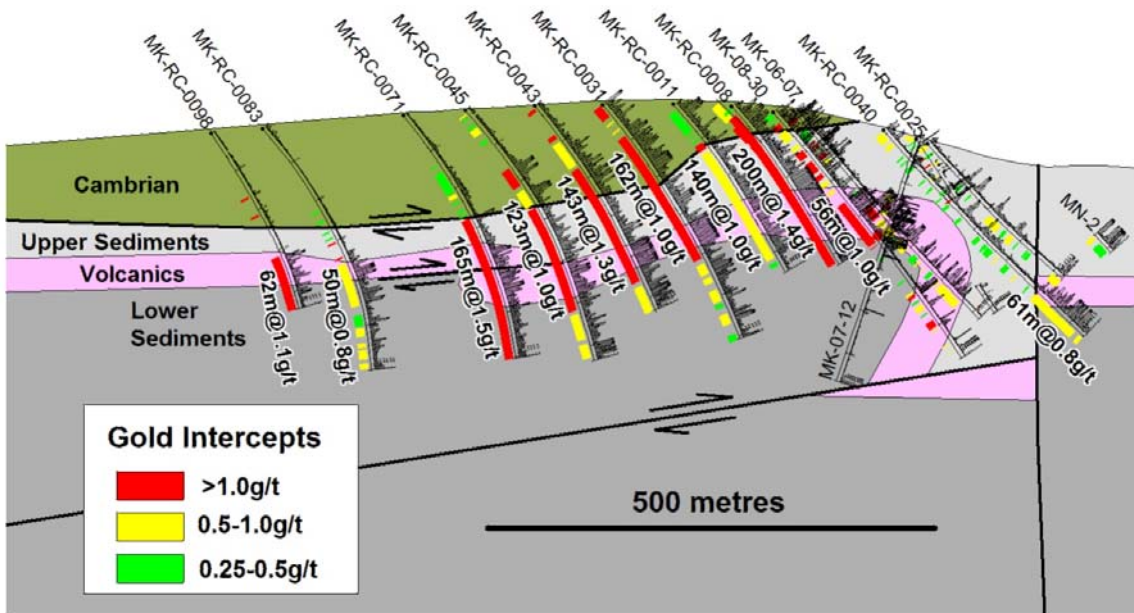


Figure 2: Section 428925 illustrating the general geology of the Livengood deposit and distribution of gold mineralization. Histogram on the right side of the drill traces reflects the arsenic content, which has a high correlation to gold (note the pending holes).