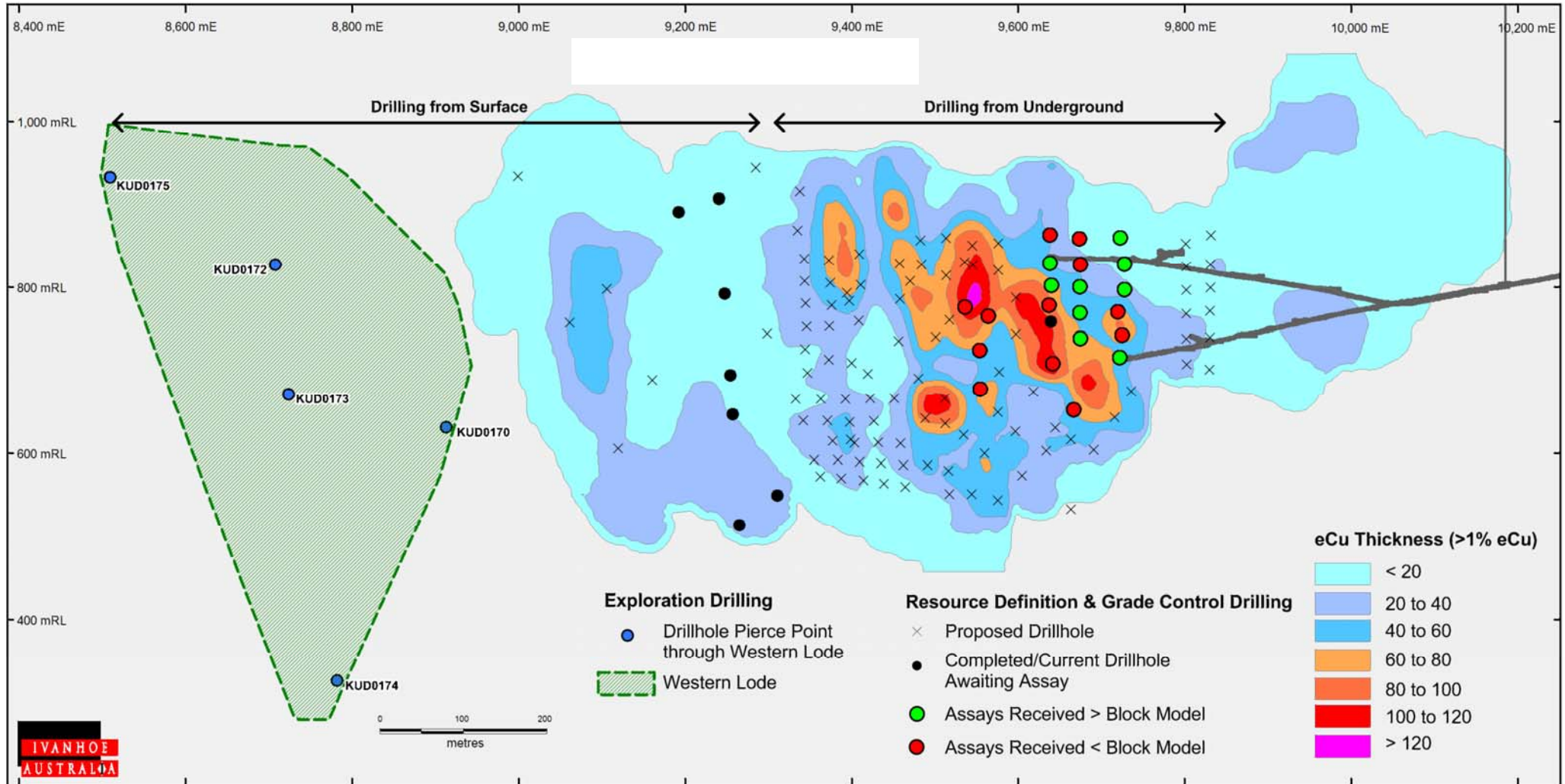


Figure 1. Kulthor – Long Section Showing 2012 Drilling



Note: eCu Thickness is a calculation of the metres of mineralised material multiplied by the copper equivalent grade of the material.
Copper equivalent (eCu%) = Cu% + (Au(g/t) * 0.6).

Figure 2. Kulthor – Long Section Showing Surface Drilling Target Area

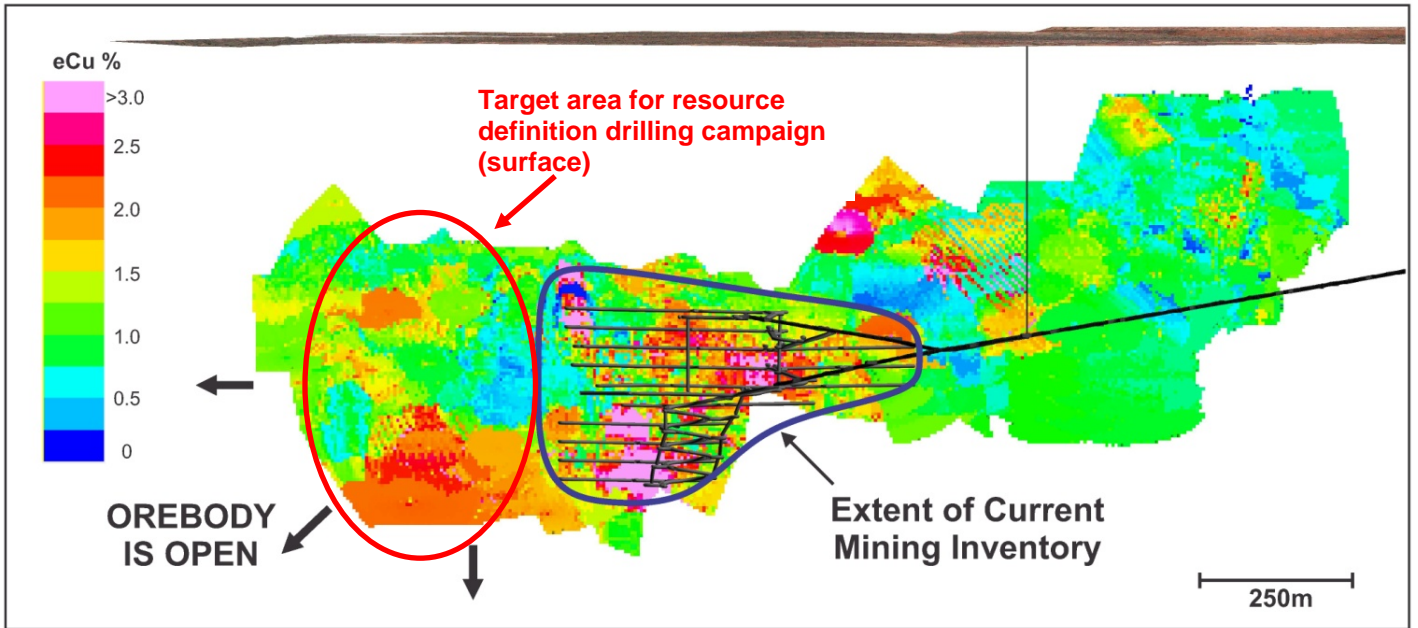


Figure 3. Kulthor – Drilling Program (plan view)

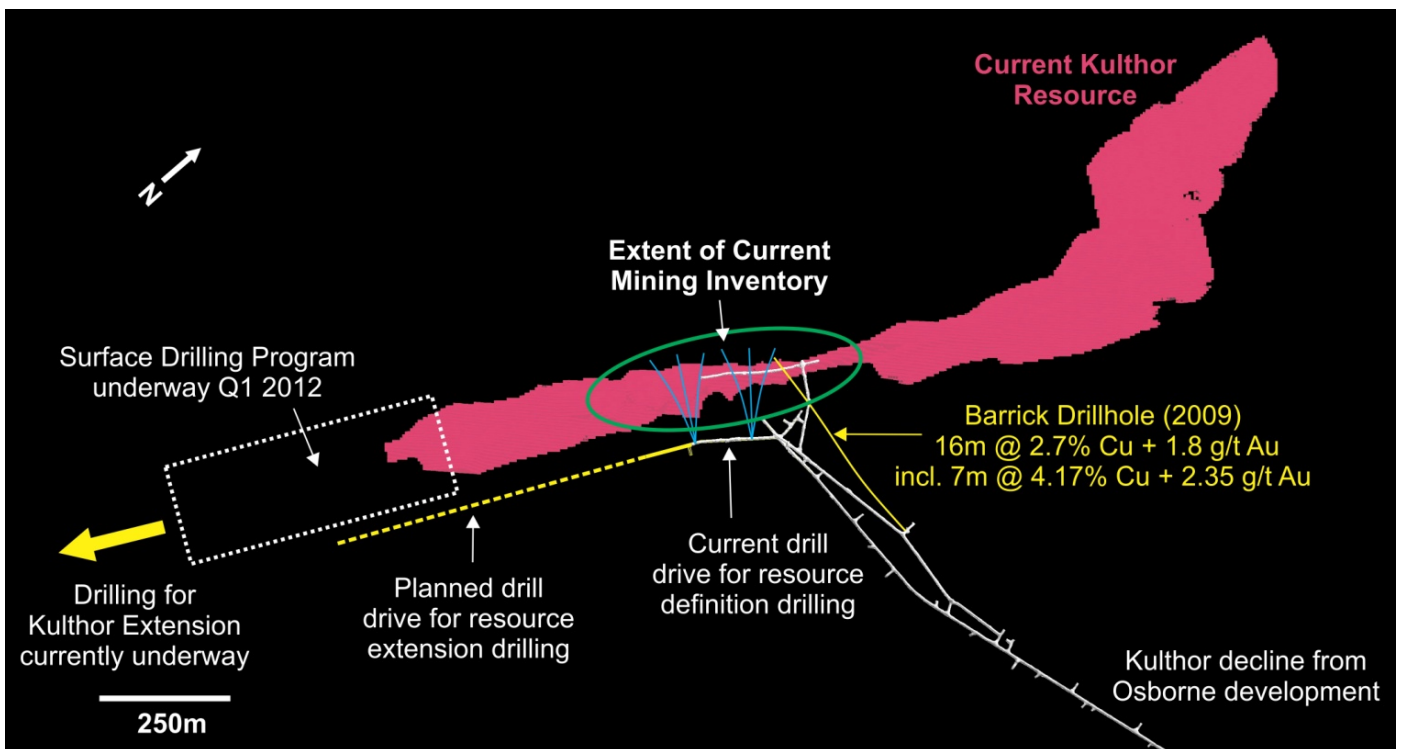
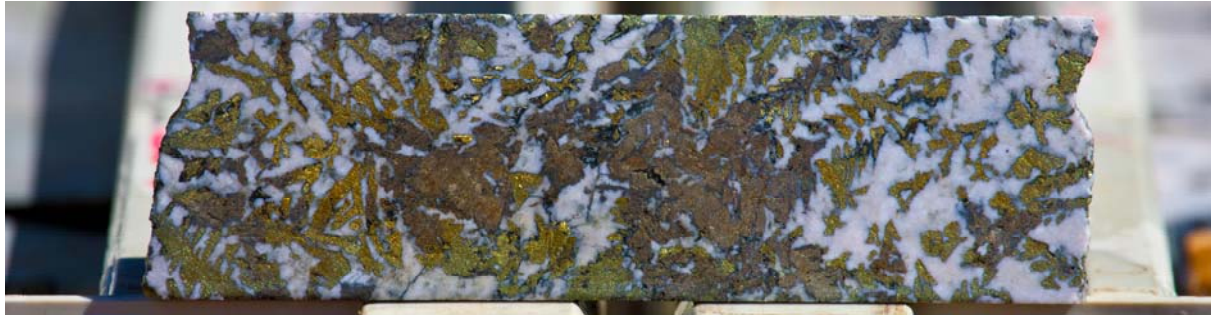
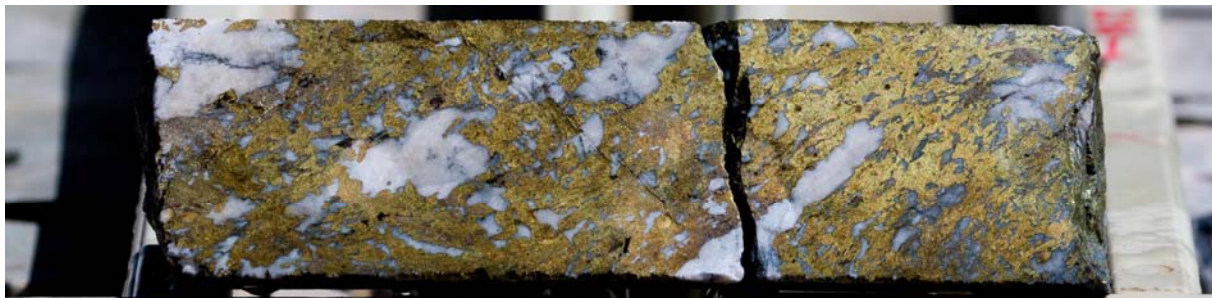


Figure 4. – Diamond Drill Core from Exploration drilling at Kulthor

High-grade sulphide with carbonate gangue of the Kulthor vein from Kulthor South drilling.



Hole KUD0170 – core sample between 624m-625m (5.39% Cu & 1.08 g/t Au)



Hole KUD0173 – core sample between 707m-708m (16.55% Cu & 0.15 g/t Au)

Figure 5. Kulthor regional Map

