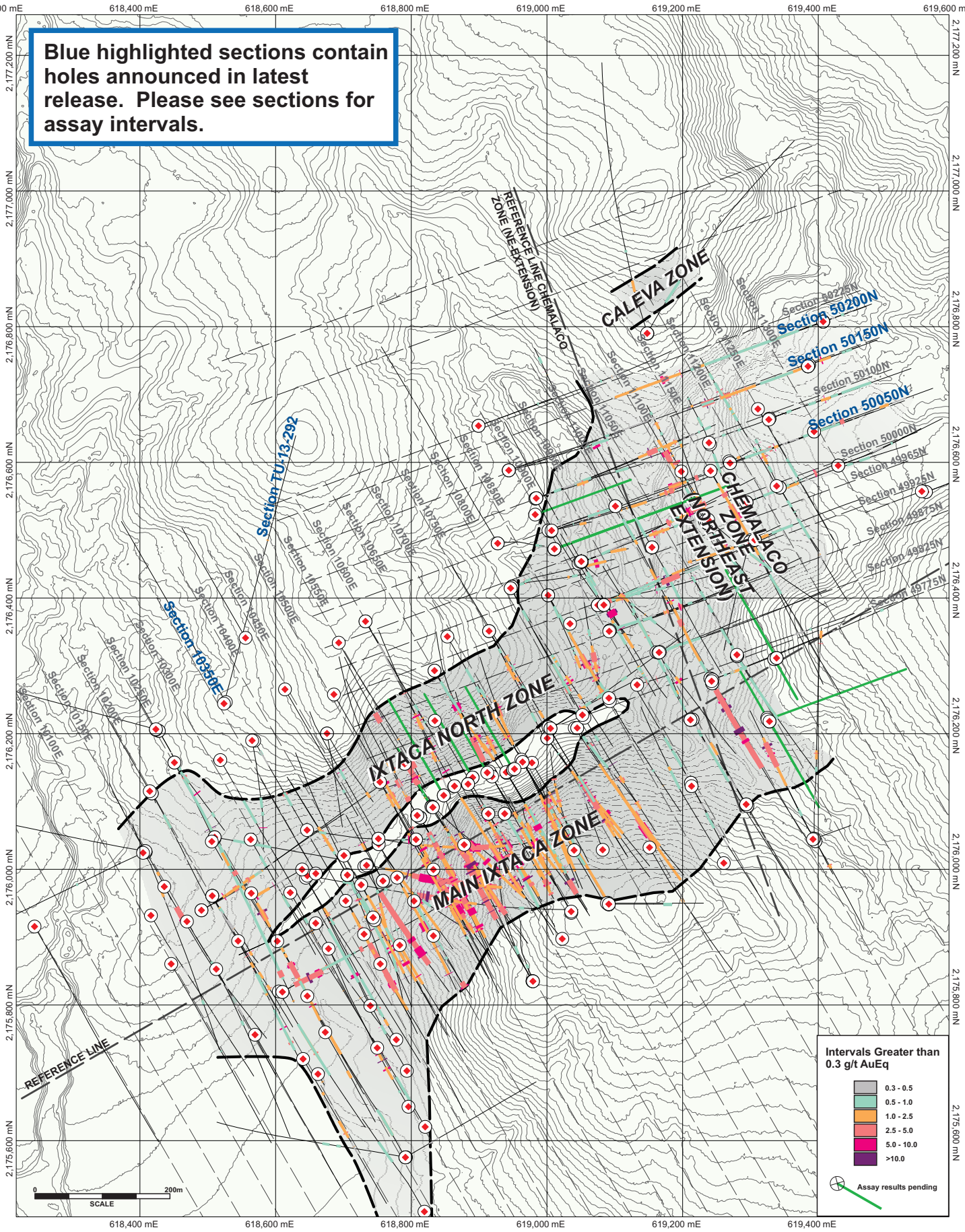


Blue highlighted sections contain holes announced in latest release. Please see sections for assay intervals.

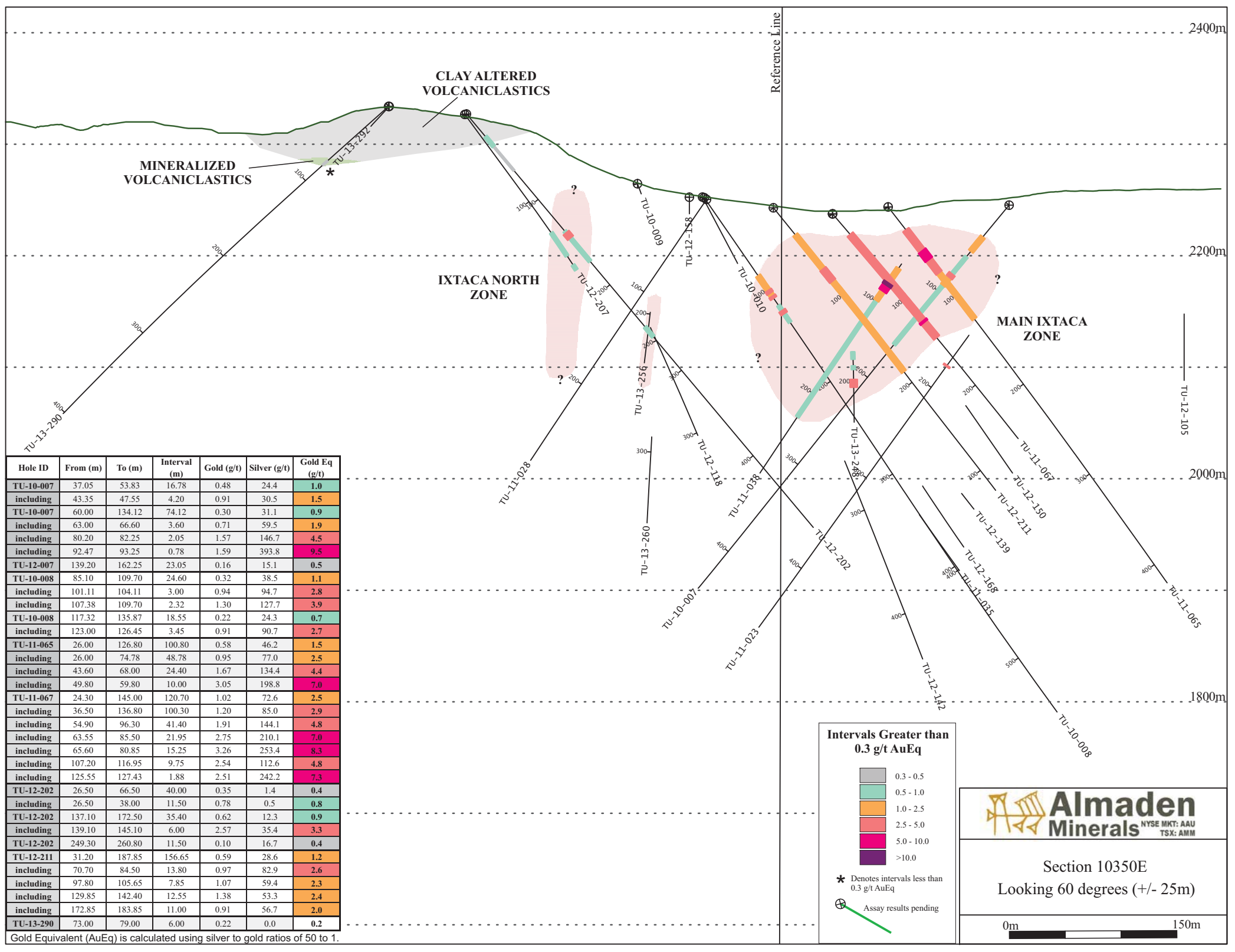


Intervals Greater than 0.3 g/t AuEq

Grey	0.3 - 0.5
Light Green	0.5 - 1.0
Orange	1.0 - 2.5
Red	2.5 - 5.0
Magenta	5.0 - 10.0
Dark Purple	>10.0

Assay results pending





Hole ID	From (m)	To (m)	Interval (m)	Gold (g/t)	Silver (g/t)	Gold Eq (g/t)
TU-10-007	37.05	53.83	16.78	0.48	24.4	1.0
including	43.35	47.55	4.20	0.91	30.5	1.5
TU-10-007	60.00	134.12	74.12	0.30	31.1	0.9
including	63.00	66.60	3.60	0.71	59.5	1.9
including	80.20	82.25	2.05	1.57	146.7	4.5
including	92.47	93.25	0.78	1.59	393.8	9.5
TU-12-007	139.20	162.25	23.05	0.16	15.1	0.5
TU-10-008	85.10	109.70	24.60	0.32	38.5	1.1
including	101.11	104.11	3.00	0.94	94.7	2.8
including	107.38	109.70	2.32	1.30	127.7	3.9
TU-10-008	117.32	135.87	18.55	0.22	24.3	0.7
including	123.00	126.45	3.45	0.91	90.7	2.7
TU-11-065	26.00	126.80	100.80	0.58	46.2	1.5
including	26.00	74.78	48.78	0.95	77.0	2.5
including	43.60	68.00	24.40	1.67	134.4	4.4
including	49.80	59.80	10.00	3.05	198.8	7.0
TU-11-067	24.30	145.00	120.70	1.02	72.6	2.5
including	36.50	136.80	100.30	1.20	85.0	2.9
including	54.90	96.30	41.40	1.91	144.1	4.8
including	63.55	85.50	21.95	2.75	210.1	7.0
including	65.60	80.85	15.25	3.26	253.4	8.3
including	107.20	116.95	9.75	2.54	112.6	4.8
including	125.55	127.43	1.88	2.51	242.2	7.3
TU-12-202	26.50	66.50	40.00	0.35	1.4	0.4
including	26.50	38.00	11.50	0.78	0.5	0.8
TU-12-202	137.10	172.50	35.40	0.62	12.3	0.9
including	139.10	145.10	6.00	2.57	35.4	3.3
TU-12-202	249.30	260.80	11.50	0.10	16.7	0.4
TU-12-211	31.20	187.85	156.65	0.59	28.6	1.2
including	70.70	84.50	13.80	0.97	82.9	2.6
including	97.80	105.65	7.85	1.07	59.4	2.3
including	129.85	142.40	12.55	1.38	53.3	2.4
including	172.85	183.85	11.00	0.91	56.7	2.0
TU-13-290	73.00	79.00	6.00	0.22	0.0	0.2


Gold Equivalent (AuEq) is calculated using silver to gold ratios of 50 to 1.

Intervals Greater than 0.3 g/t AuEq

- 0.3 - 0.5
- 0.5 - 1.0
- 1.0 - 2.5
- 2.5 - 5.0
- 5.0 - 10.0
- >10.0

* Denotes intervals less than 0.3 g/t AuEq

⊕ Assay results pending



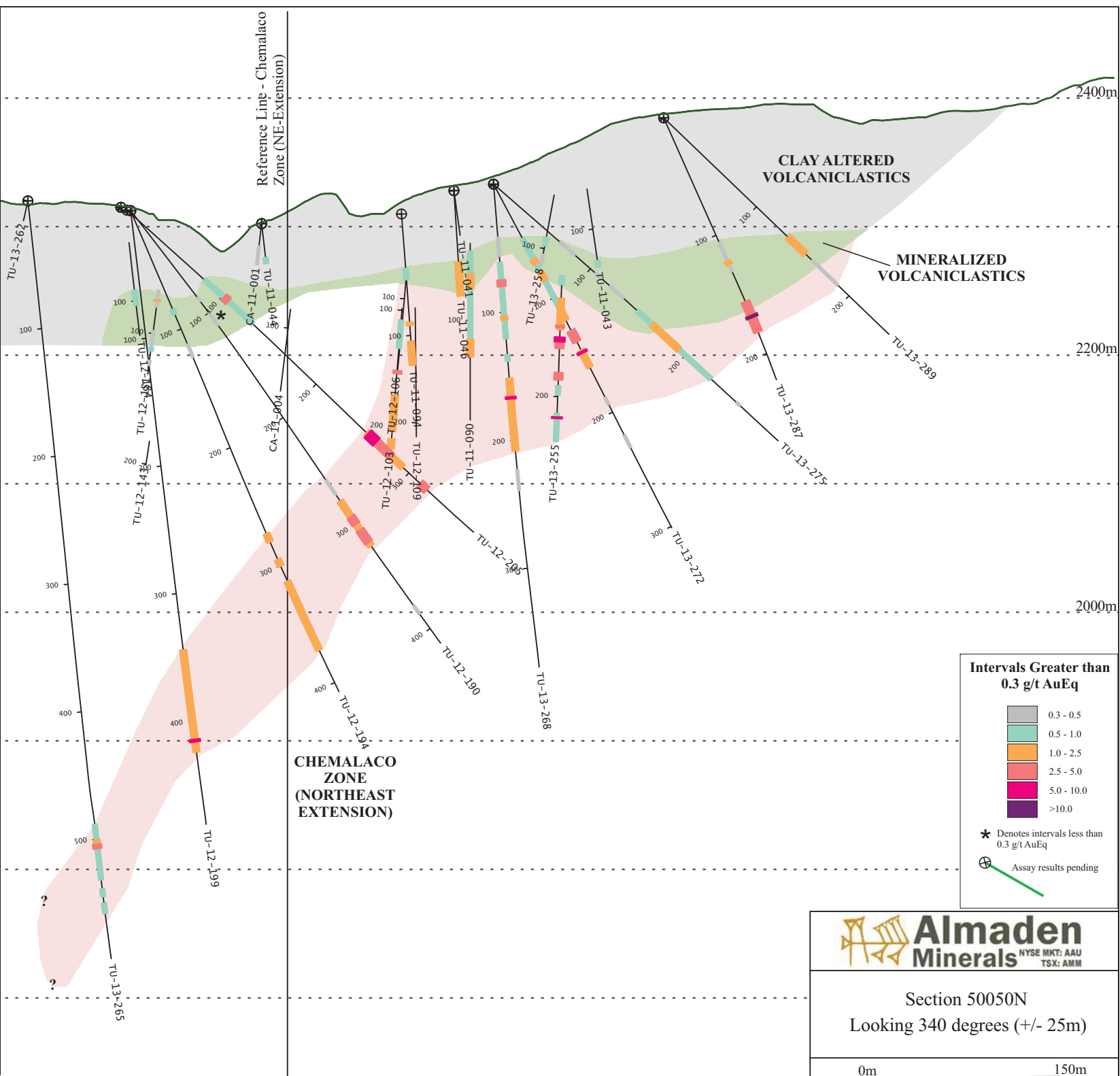
Almaden Minerals NYSE MKT: AAU
TSX: AMM

Section 10350E
Looking 60 degrees (+/- 25m)

0m 150m

Hole ID	From (m)	To (m)	Interval (m)	Gold (g/t)	Silver (g/t)	Gold Eq (g/t)
TU-12-190	85.00	89.00	4.00	0.25	0.5	0.3
TU-12-190	100.00	112.00	12.00	0.17	1.9	0.2
TU-12-190	259.00	272.90	13.90	0.17	12.3	0.4
TU-12-190	278.85	321.00	42.15	1.06	47.4	2.0
including	293.50	300.50	7.00	1.34	72.0	2.8
including	306.00	317.80	11.80	1.67	71.7	3.1
including	310.00	314.00	4.00	2.45	116.4	4.8
TU-12-190	377.90	386.00	8.10	0.24	2.8	0.3
TU-12-194	83.50	87.50	4.00	0.46	2.8	0.5
TU-12-194	112.60	124.00	11.40	0.22	4.4	0.3
TU-12-194	272.50	279.50	7.00	0.15	40.9	1.0
TU-12-194	294.50	300.00	5.50	0.14	81.1	1.8
TU-12-194	313.00	371.80	58.80	1.04	19.4	1.4
including	317.60	347.00	29.40	1.63	23.9	2.1
TU-12-199	66.00	70.00	4.00	0.26	2.4	0.3
TU-12-199	91.00	93.80	2.80	0.19	3.0	0.2
TU-12-199	344.20	424.00	79.80	0.84	20.6	1.3
including	365.70	385.70	20.00	1.19	25.6	1.7
including	396.50	402.50	6.00	1.43	16.0	1.8
including	408.30	423.40	15.10	1.48	37.6	2.2
including	414.30	416.10	1.80	4.90	175.5	8.4
TU-12-205	81.00	132.00	51.00	0.51	6.0	0.6
including	101.50	106.00	4.50	3.41	6.1	3.5
TU-12-205	254.50	293.50	39.00	0.61	88.8	2.4
including	255.50	281.20	25.70	0.86	127.8	3.4
including	256.00	272.40	16.40	1.08	164.8	4.4
including	256.00	265.00	9.00	1.57	244.5	6.5
TU-12-205	312.00	319.00	7.00	0.19	207.2	4.3
TU-13-265	488.40	531.80	43.40	0.50	9.2	0.7
including	500.60	507.20	6.60	2.15	11.6	2.4
including	504.20	507.20	3.00	3.36	17.1	3.7
TU-13-265	539.00	545.00	6.00	0.07	22.2	0.5
TU-13-265	550.30	558.00	7.70	0.07	28.1	0.6
TU-13-268	41.30	56.25	14.95	0.05	11.5	0.3
TU-13-268	61.25	120.50	59.25	0.11	41.1	0.9
including	74.90	79.75	4.85	0.25	126.9	2.8
including	103.00	106.00	3.00	0.23	81.2	1.9
TU-13-268	133.00	138.00	5.00	0.03	22.3	0.5
TU-13-268	151.50	208.00	56.50	0.36	42.0	1.2
including	166.00	178.50	12.50	0.56	91.4	2.4
including	166.00	167.50	1.50	0.74	223.7	5.2
including	192.00	199.50	7.50	0.75	51.6	1.8
TU-13-268	222.75	239.00	16.25	0.08	14.6	0.4
TU-13-272	48.00	138.50	90.50	0.20	31.4	0.8
including	66.05	70.20	4.15	0.44	49.5	1.4
including	77.50	84.80	7.30	0.29	71.1	1.7
including	112.75	119.75	7.00	0.43	40.1	1.2
including	129.00	138.50	9.50	0.41	114.0	2.7
TU-13-272	146.00	161.00	15.00	0.22	47.1	1.2
including	147.00	148.50	1.50	0.65	252.7	5.7
TU-13-272	187.00	193.50	6.50	0.11	11.5	0.3
TU-13-272	220.00	231.00	11.00	0.14	9.5	0.3
TU-13-275	68.50	84.00	15.50	0.15	10.6	0.4
TU-13-275	105.00	112.00	7.00	0.11	15.8	0.4
TU-13-275	120.00	134.50	14.50	0.18	6.2	0.3
TU-13-275	149.00	227.00	78.00	0.39	23.8	0.9
including	164.50	193.50	29.00	0.43	43.3	1.3
TU-13-275	254.00	258.00	4.00	0.01	13.5	0.3
TU-13-287	106.00	131.00	25.00	0.11	15.2	0.4
including	122.00	125.00	3.00	0.30	50.3	1.3
TU-13-287	156.50	182.00	25.50	0.66	102.3	2.7
including	168.00	170.08	2.08	4.35	975.0	23.9
TU-13-289	134.00	153.00	19.00	0.22	48.4	1.2
including	144.50	151.80	7.30	0.40	82.8	2.1
TU-13-289	160.00	188.00	28.00	0.21	10.8	0.4

Gold Equivalent (AuEq) is calculated using silver to gold ratios of 50 to 1.



Intervals Greater than 0.3 g/t AuEq

- 0.3 - 0.5
- 0.5 - 1.0
- 1.0 - 2.5
- 2.5 - 5.0
- 5.0 - 10.0
- >10.0

* Denotes intervals less than 0.3 g/t AuEq

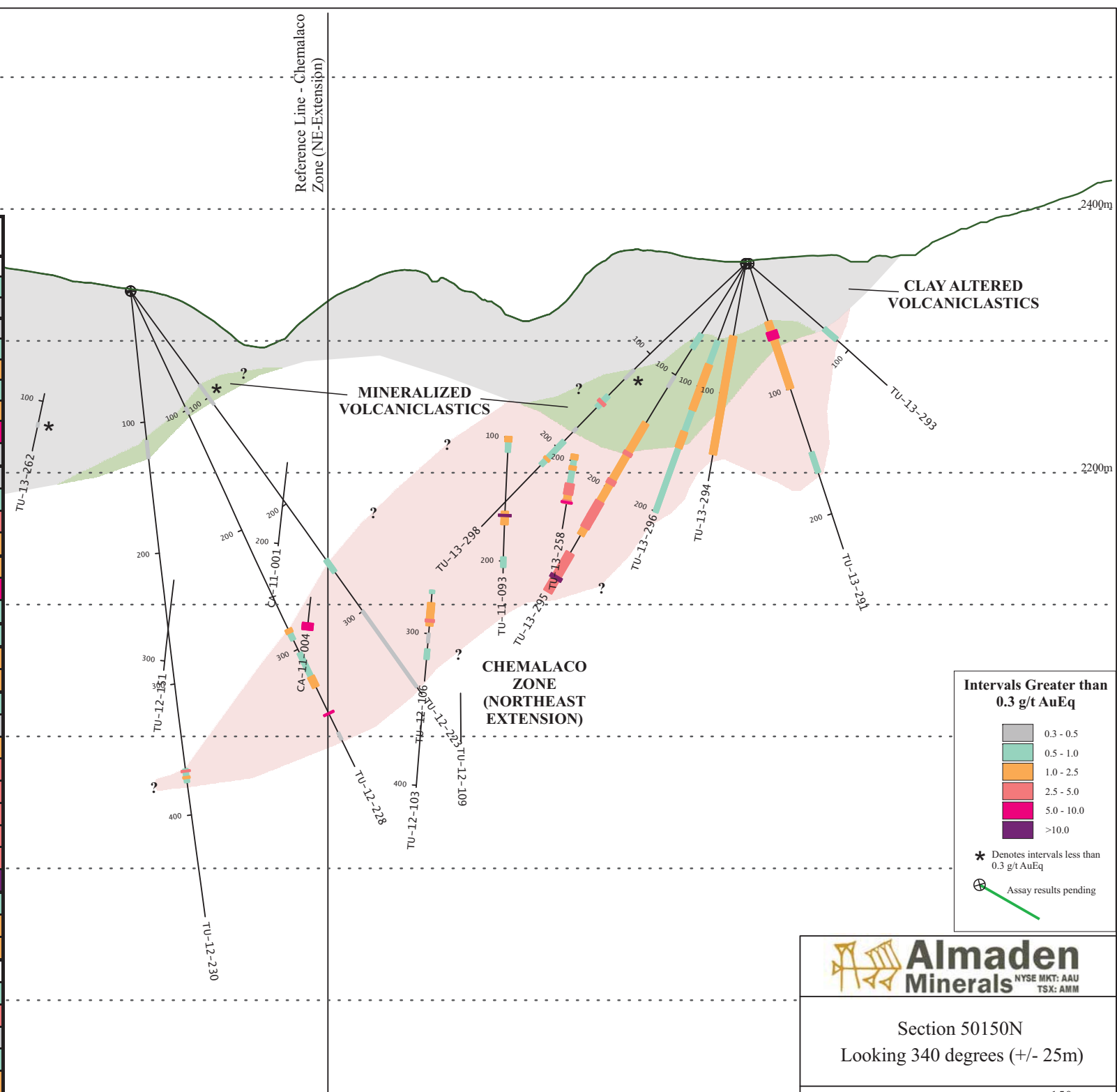
⊕ Assay results pending

Almaden Minerals
NYSE MKT: AAU
TSX: AMM

Section 50050N
Looking 340 degrees (+/- 25m)

0m 150m

Hole ID	From (m)	To (m)	Interval (m)	Gold (g/t)	Silver (g/t)	Gold Eq (g/t)
TU-12-223	88.00	107.00	19.00	0.15	3.8	0.2
TU-12-223	252.00	263.40	11.40	0.13	30.5	0.7
TU-12-223	299.40	370.60	71.20	0.10	8.3	0.3
TU-12-228	97.50	103.00	5.50	0.13	7.8	0.3
TU-12-228	283.10	292.00	8.90	0.16	35.2	0.9
including	283.10	286.00	2.90	0.29	59.2	1.5
TU-12-228	303.10	362.00	58.90	0.34	19.4	0.7
including	323.00	331.50	8.50	0.90	19.2	1.3
including	353.50	354.50	1.00	2.36	213.1	6.6
TU-12-228	370.00	376.10	6.10	0.06	16.2	0.4
TU-12-230	114.00	127.70	13.70	0.11	9.2	0.3
TU-12-230	365.00	375.00	10.00	0.02	37.0	0.8
including	366.00	367.00	1.00	0.01	207.1	4.2
including	370.80	372.00	1.20	0.08	82.6	1.7
TU-13-291	46.45	99.97	53.52	0.56	82.3	2.2
including	54.25	60.35	6.10	0.86	313.5	7.1
TU-13-291	151.00	167.00	16.00	0.13	18.9	0.5
TU-13-293	75.59	87.78	12.19	0.36	7.6	0.5
TU-13-294	56.00	146.75	90.75	0.35	31.1	1.0
including	100.00	124.36	24.36	0.67	71.9	2.1
TU-13-295	63.40	76.00	12.60	0.16	18.0	0.5
TU-13-295	101.00	111.00	10.00	0.20	4.0	0.3
TU-13-295	143.00	241.00	98.00	0.24	41.4	1.1
including	168.70	171.20	2.50	0.94	121.8	3.4
including	193.00	196.50	3.50	0.48	152.0	3.5
including	212.00	234.65	22.65	0.44	103.2	2.5
including	225.05	232.30	7.25	0.64	183.4	4.3
TU-13-295	257.00	290.78	33.78	0.23	208.4	4.4
including	277.00	279.80	2.80	0.62	2291.1	46.4
TU-13-296	62.70	200.56	137.86	0.43	21.4	0.9
including	81.69	118.20	36.51	0.83	31.3	1.5
including	136.00	148.74	12.74	0.56	55.6	1.7
TU-13-298	117.00	127.00	10.00	0.05	8.6	0.2
TU-13-298	145.00	157.00	12.00	0.09	30.8	0.7
including	151.00	153.00	2.00	0.13	148.1	3.1
TU-13-298	179.00	183.00	4.00	0.05	11.3	0.3
TU-13-298	193.00	218.00	25.00	0.29	9.5	0.5
including	211.00	212.50	1.50	1.06	19.7	1.5



Intervals Greater than 0.3 g/t AuEq

- 0.3 - 0.5
- 0.5 - 1.0
- 1.0 - 2.5
- 2.5 - 5.0
- 5.0 - 10.0
- >10.0

* Denotes intervals less than 0.3 g/t AuEq

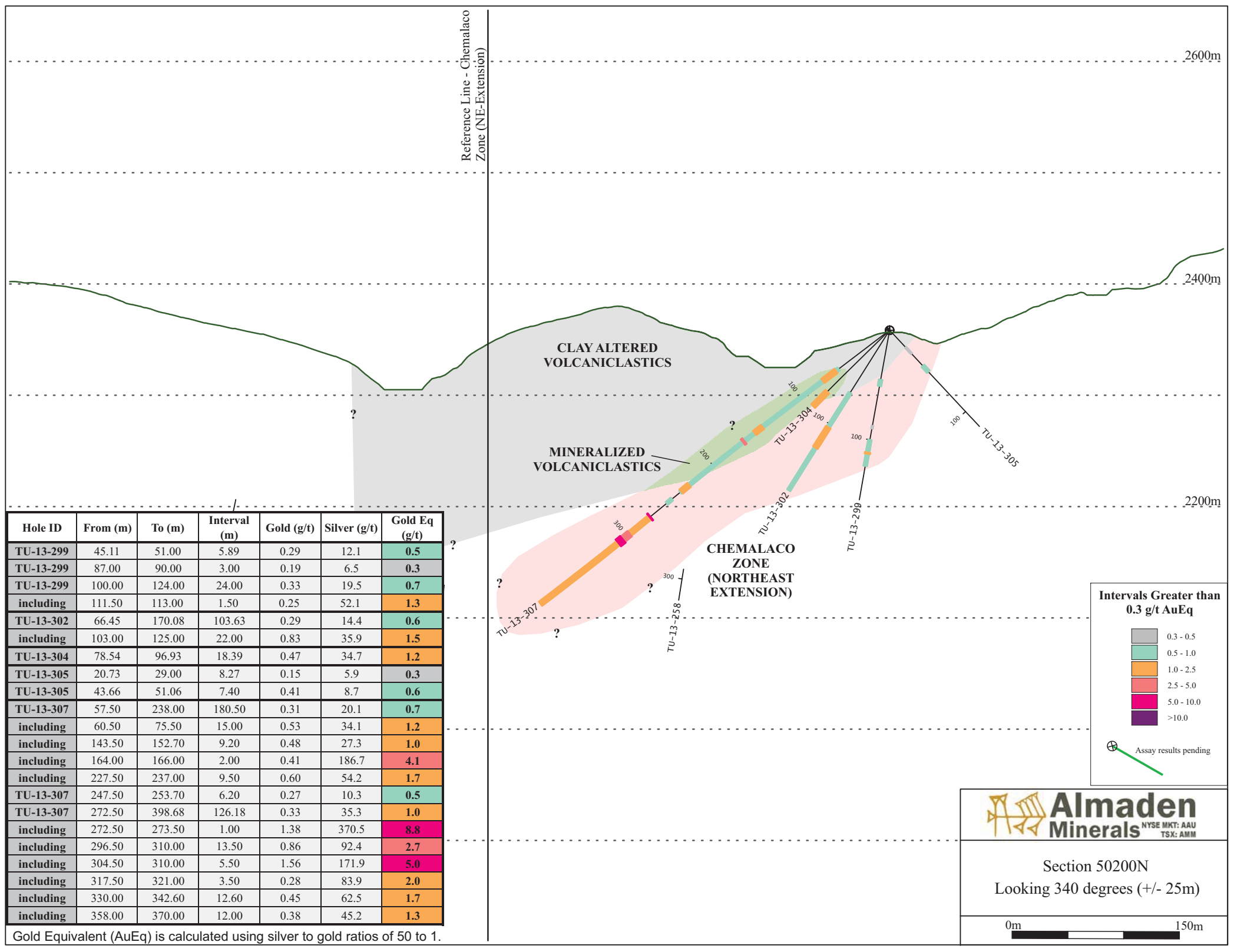
⊗ Assay results pending

Almaden Minerals
 NYSE MKT: AAU
 TSX: AMM

Section 50150N
 Looking 340 degrees (+/- 25m)

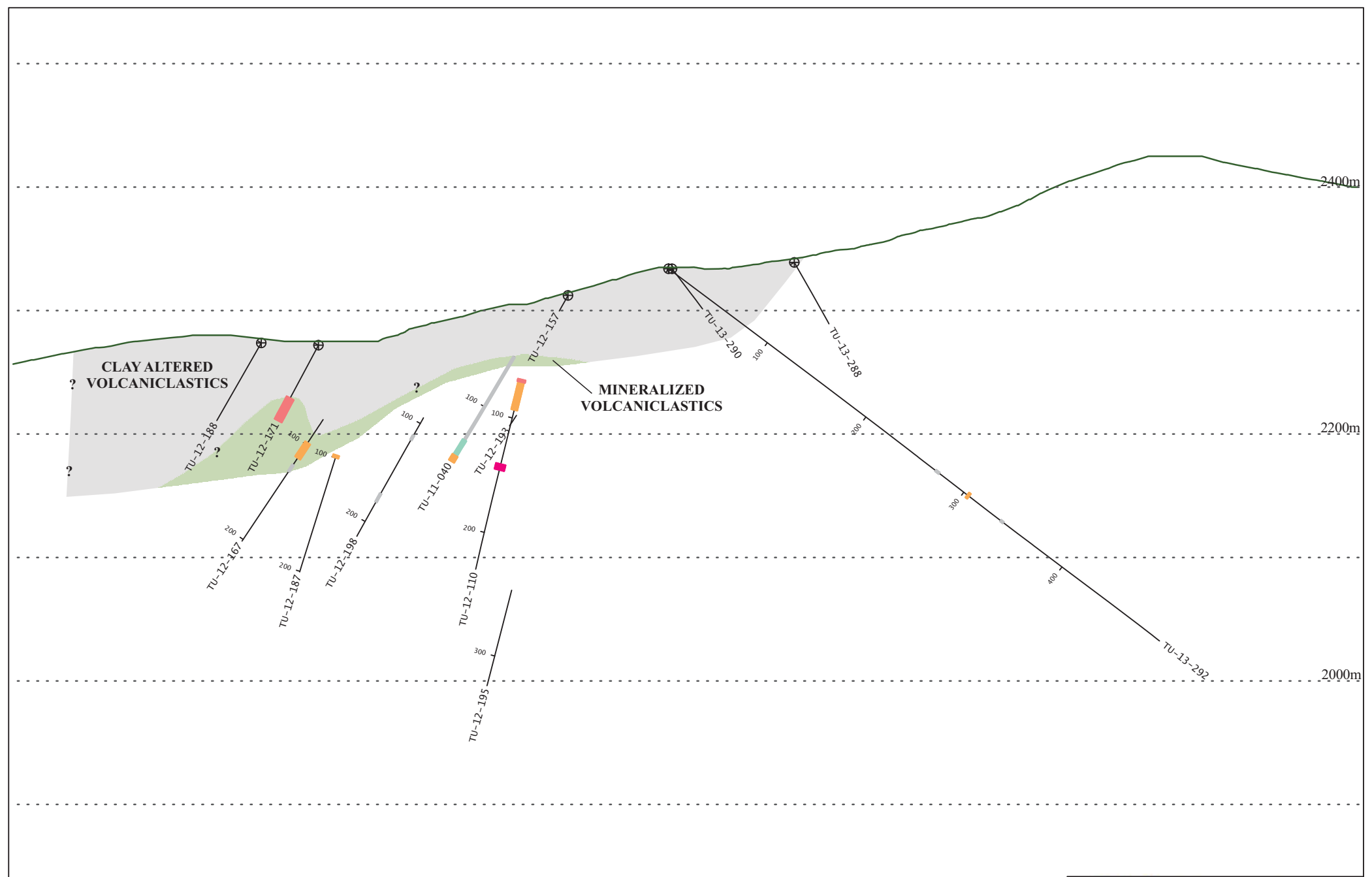
0m 150m

Gold Equivalent (AuEq) is calculated using silver to gold ratios of 50 to 1.




Hole ID	From (m)	To (m)	Interval (m)	Gold (g/t)	Silver (g/t)	Gold Eq (g/t)
TU-13-299	45.11	51.00	5.89	0.29	12.1	0.5
TU-13-299	87.00	90.00	3.00	0.19	6.5	0.3
TU-13-299	100.00	124.00	24.00	0.33	19.5	0.7
including	111.50	113.00	1.50	0.25	52.1	1.3
TU-13-302	66.45	170.08	103.63	0.29	14.4	0.6
including	103.00	125.00	22.00	0.83	35.9	1.5
TU-13-304	78.54	96.93	18.39	0.47	34.7	1.2
TU-13-305	20.73	29.00	8.27	0.15	5.9	0.3
TU-13-305	43.66	51.06	7.40	0.41	8.7	0.6
TU-13-307	57.50	238.00	180.50	0.31	20.1	0.7
including	60.50	75.50	15.00	0.53	34.1	1.2
including	143.50	152.70	9.20	0.48	27.3	1.0
including	164.00	166.00	2.00	0.41	186.7	4.1
including	227.50	237.00	9.50	0.60	54.2	1.7
TU-13-307	247.50	253.70	6.20	0.27	10.3	0.5
TU-13-307	272.50	398.68	126.18	0.33	35.3	1.0
including	272.50	273.50	1.00	1.38	370.5	8.8
including	296.50	310.00	13.50	0.86	92.4	2.7
including	304.50	310.00	5.50	1.56	171.9	5.0
including	317.50	321.00	3.50	0.28	83.9	2.0
including	330.00	342.60	12.60	0.45	62.5	1.7
including	358.00	370.00	12.00	0.38	45.2	1.3

Gold Equivalent (AuEq) is calculated using silver to gold ratios of 50 to 1.



Hole ID	From (m)	To (m)	Interval (m)	Gold (g/t)	Silver (g/t)	Gold Eq (g/t)
TU-13-292	271.00	275.00	4.00	0.05	11.8	0.3
TU-13-292	303.50	305.50	2.00	0.12	54.9	1.2
TU-13-292	337.50	340.50	3.00	0.04	12.9	0.3

Gold Equivalent (AuEq) is calculated using silver to gold ratios of 50 to 1.



Section through hole TU-13-292
Looking 285 degrees (+/- 25m)

