

Exhibit 1: Testing of copper (gold) porphyries at advanced prospects

Large-scale targets adjacent to the Bronze Fox Intrusive Complex (“BFIC”) are being drill tested for preserved copper and gold porphyry orebodies with activities focused on the Shargal Tolgoi, Dunlop Fox & Sophie North prospects

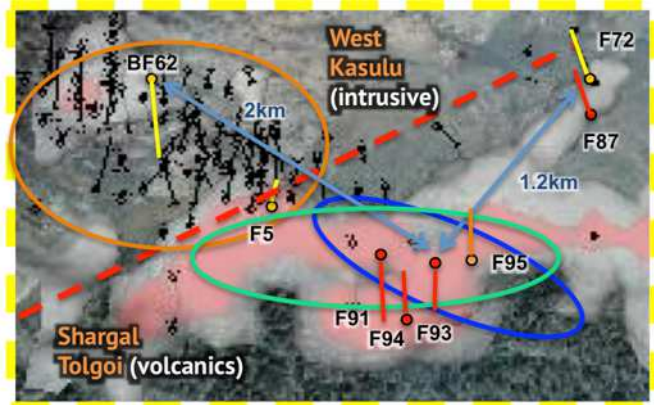
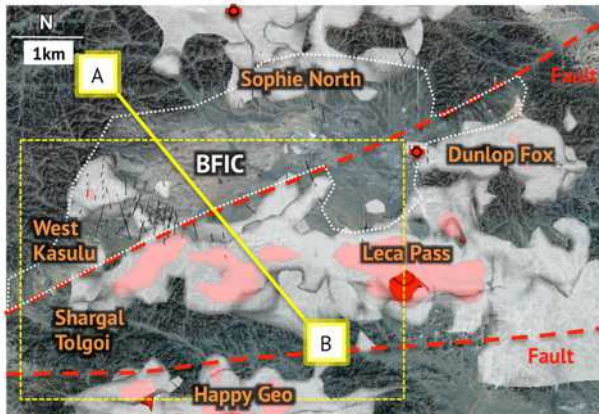
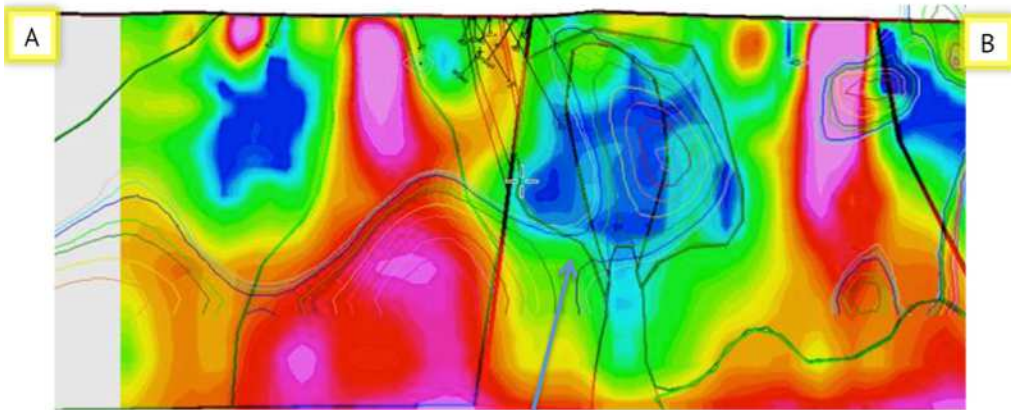


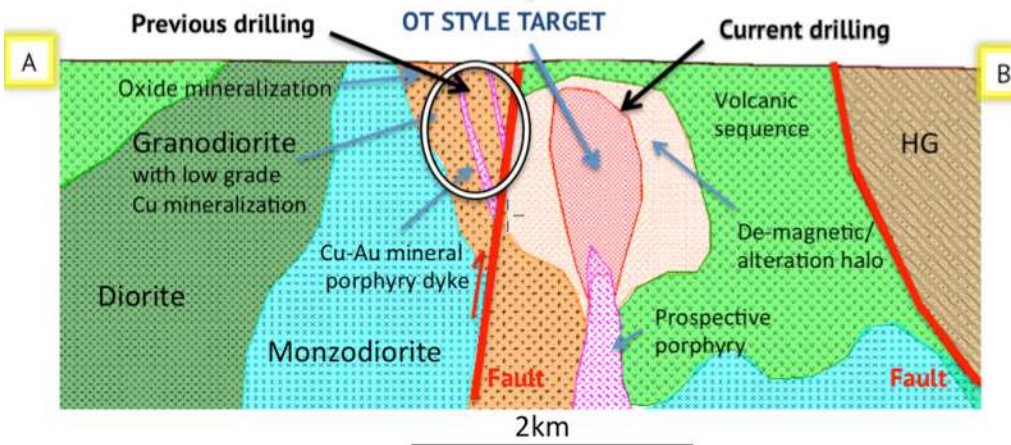
Illustration of a geological interpretation of the BFIC, location of various prospects, incl. drilling at Shargal Tolgoi, and 2013 IP chargeability high anomalies

Brown circle: historical drilling area (NW of the fault)
Blue circle: magnetic trend, Green circle: outcropping veining with soil anomalies, 2013 IP chargeability high anomalies

Exhibit 2: Geophysical & geological results support large-scale porphyry targets with profiles inline with known copper porphyry orebodies, including Oyu Tolgoi (A-B cross sections from Exhibit 1)



LHS background:-
i. **Magnetic susceptibility:** red=high, blue=low. Low mag interpreted to indicate alteration with magnetite destruction
ii. **Contours:** 2013 Search IP inversion, of >15mV/V, an indication of sulphides
iii. **Drilling:** previous holes support fault, host rock & porphyry model



Current drilling is reconciling to, and supporting, the interpreted porphyry model
Conceptual cross section of interpreted lithology in the area of previous concentrated drilled at West Kasulu and the newly identified significant mineralization zone in volcanic sedimentary sequence named Shargal Tolgoi

Exhibit 3: All holes drilled in 2014 to date have intersected sulfides inline with IP targets

Vein in chalcopyrite & pyrite at F93 (depth 597m)



Chalcopyrite quartz vein in porphyry at F93 (depth 557m)

